

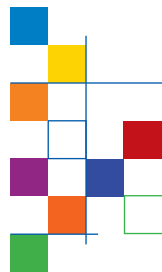
## SERVA Gel™ Precast Gels

Your best choice in protein gel electrophoresis

▮ Precast polyacrylamide gels in mini format (10 x 10 cm)

▮ SDS free for native and SDS PAGE

**SERVA**  
Electrophoresis



# The SERVA PRiME™ System

PRiME™ - Premium Resolution in Minigel Electrophoresis

- BlueVertical™ PRiME™ mini gel electrophoresis apparatus
- SERVAGel™ PRiME™ precast mini gels at 10 x 10 x 0.7 cm
- High resolution in protein electrophoresis
- Separation range down to 3 kDa and up to over 200 kDa
- Run gels with Laemmli loading and running buffer
- Separation pattern comparable to standard Laemmli gels
- Long shelf life (> 1 year), ideal suited for stocking of gels in the lab
- Available as homogeneous and gradient gels
- With 10, 12 or 15 sample wells, 2D well
- Running time approx. 35 minutes

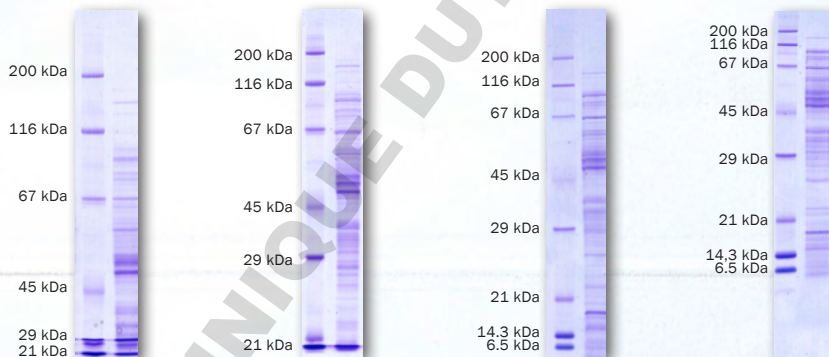
It's PRiME™ Time



# SERVAge™ TG PRiME™

## Homogeneous Gels

- Separation range from 3 kDa up to 200 kDa
- Run gels with Laemmli buffer system
- Available in 4 different AA concentrations: 8 %, 10 %, 12 % and 14 %
- Available with 10, 12 or 15 sample wells



SERVAge™ TG PRiME 8 %			SERVAge™ TG PRiME 10 %			SERVAge™ TG PRiME 12 %			SERVAge™ TG PRiME 14 %		
10 gels			10 gels			10 gels			10 gels		
10 wells	12 wells	15 wells	10 wells	12 wells	15 wells	10 wells	12 wells	15 wells	10 wells	12 wells	15 wells
43261.01	43260.01	43284.01	43264.01	43263.01	43285.01	43267.01	43266.01	43286.01	43270.01	43269.01	43287.01

# SERVAge™ TG PRiME™

## Gradient Gels

- Separation range from 3 kDa up to 200 kDa
- Run gels with Laemmli buffer system
- Available in 3 different AA concentrations: 4–12 %, 4–20 % and 8–16 %
- Available with 10, 12 or 15 sample wells

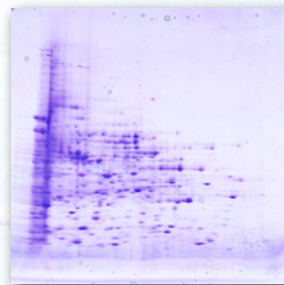
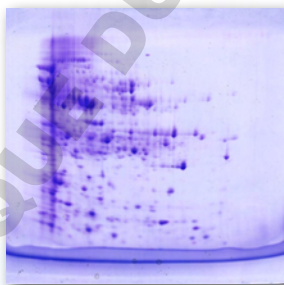
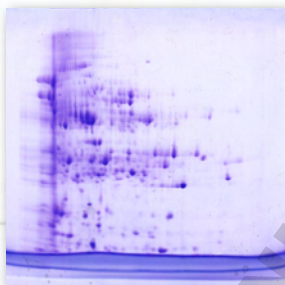


SERVAge™ TG PRiME 4–12 %			SERVAge™ TG PRiME 4–20 %			SERVAge™ TG PRiME 8–16 %		
10 gels			10 gels			10 gels		
10 wells	12 wells	15 wells	10 wells	12 wells	15 wells	10 wells	12 wells	15 wells
43274.01	43273.01	43288.01	43277.01	43276.01	43289.01	43280.01	43279.01	43290.01

# SERVAge™ TG PRiME™

## 2D Gels

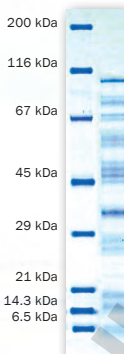
- Separation range from 3 kDa up to 200 kDa
- Run gels with Laemmli buffer system
- Available in 3 different AA concentrations: 12 %, 14 % and 8–16 %
- 2D well optimized for protein transfer from strip to gel



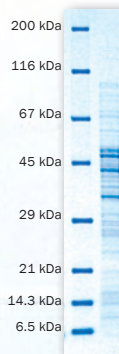
SERVAge™ TG PRiME 12 % 2D	SERVAge™ TG PRiME 14 % 2D	SERVAge™ TG PRiME 8–16 % 2D
10 gels	10 gels	10 gels
2D well	2D well	2D well
43268.01	43271.01	43281.01

# SERVAge™ Neutral Gels

- Separation range from 5 kDa up to 200 kDa
- Long shelf life (> 1 year)
- Available as homogeneous and gradient gel
- Usage of different buffer systems



SERVAge™ Neutral



SERVAge™ Neutral Gradient

SERVAge™ Neutral	SERVAge™ Neutral	SERVAge™ Neutral Gradient	SERVAge™ Neutral Gradient
10 gels	10 gels	10 gels	10 gels
10 wells	12 wells	10 wells	12 wells
43222.01	43220.01	43223.01	43221.01

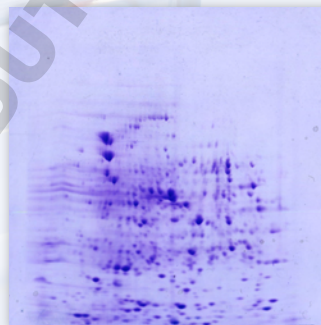
# SERVAGel™ Neutral Gel HSE

- Optimized for High Speed Electrophoresis (HSE)

- 1D SDS PAGE: 20 minutes

- 2 D SDS PAGE: 30 minutes (2nd dimension)

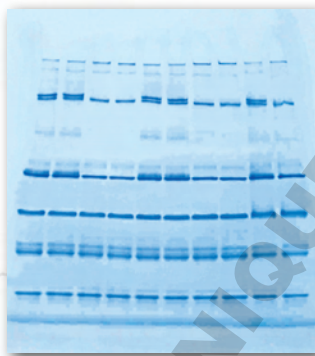
- Available with 10 or 12 wells, 2D well



SERVAGel™ Neutral HSE	SERVAGel™ Neutral HSE	SERVAGel™ Neutral HSE 2D
10 gels	10 gels	10 gels
10 wells	12 wells	2D well
43246.01	43245.01	43247.01

# SERVAGel™ Native Gels

- Suitable for both Blue and Clear Native PAGE
- Available as gradient gels 3–12 % and 4–16 %
- Available with 10 or 12 wells
- Ready-to-use anode, cathode and sample buffers are available



Ferritin horse (720 kDa)  
Urease jack bean (545 kDa)  
Ferritin horse (450 kDa)  
Urease jack bean (272 kDa)  
Lactate dehydrogenase porcine (146 kDa)  
Albumin bovine (67 kDa)  
Albumin egg (45 kDa)  
Trypsin inhibitor soybean (21 kDa)

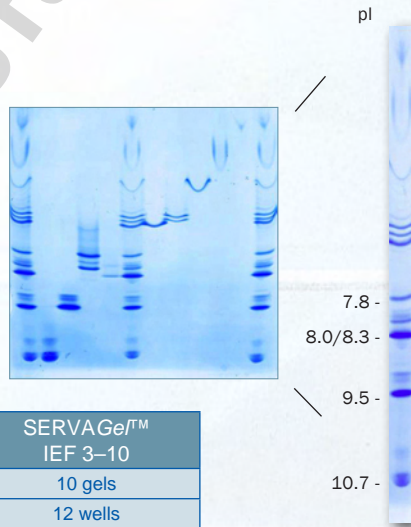
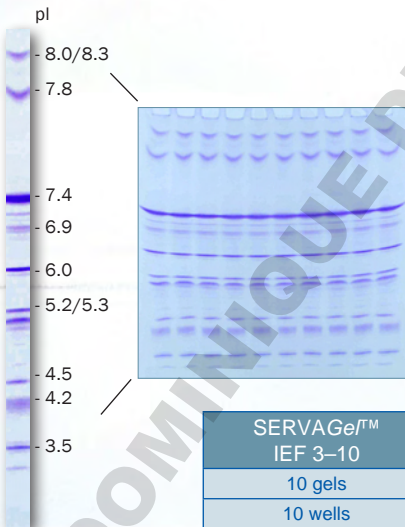
SERVAGel™ Native 3–12 %	SERVAGel™ Native 3–12 %	SERVAGel™ Native 4–16 %	SERVAGel™ Native 4–16 %
10 gels	10 gels	10 gels	10 gels
10 wells	12 wells	10 wells	12 wells
43251.01	43250.01	43252.01	43253.01



# SERVAGel™ IEF Gels

## 2D Gels

- For vertical IEF in mini slab gel format
- Suitable for both native and denaturing conditions
- Standard IEF by cathodic sample application
- NEPHGE by anodic sample application for very basic proteins



SERVAGel™ IEF 3-10	SERVAGel™ IEF 3-10
10 gels	10 gels
10 wells	12 wells
43242.01	43240.01

Vertical standard IEF using  
SERVAGel™ IEF 3-10

NEPHGE using  
SERVAGel™ IEF 3-10

# Equipment for PRiME™



## BlueVertical™ PRiME™

- Mini electrophoresis tank system
- Ideally suited for SERVAGe™ PRiME™ gels
- Runs all gels with an outer format of 10 x 10 x 0.7 cm
- Unique, leak free clamp system
- Smart design - made in Germany



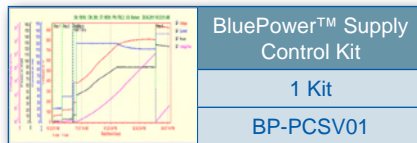
## MP 300 V Power Supply

- 300 V, 700 mA, 150 W
- Volt or Ampere constant, timer
- For mini gel electrophoresis and blotting
- 4 x 2 outlets



## BluePower™ Supply Control Kit

- Monitoring of V, mA and W of each individual run
- Loading, storage and documentation of multistep settings
- Can be used with all SERVA BluePower™ supplies
- Compatible with all Windows® platforms (Windows® 98 and higher)



**SERVA**  
Electrophoresis

SERVA Electrophoresis GmbH  
Carl-Benz-Str. 7  
Fon: +49 6221 13840-0  
info@serva.de

D-69115 Heidelberg  
Fax: +49 6221 13840-10  
www.serva.de