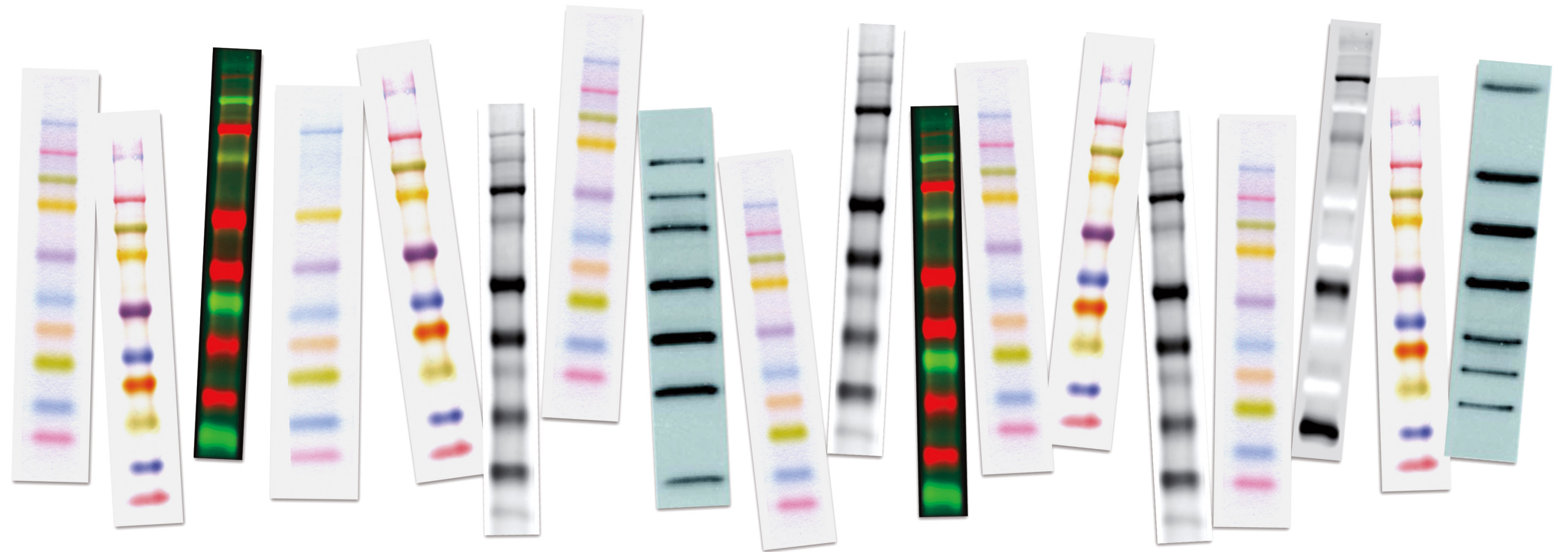


Amersham Rainbow markers

Accurate size determination of
your protein on gels and blots



DOMINIQUE DUTSCHER CAS

Amersham Rainbow markers at a glance

Simpler and faster identification of your proteins of interest

To differentiate proteins with similar molecular weights on your gels or blots, you need the clearest protein standards to get the fastest results. Rely on the proven performance of Amersham™ Rainbow™ markers that have been developed for optimal results.

- Broad color spectrum for easier band identification
- Sharper, more intense bands on gels and blots
- Improved band spacing for more accurate molecular weight determination
- Ready-to-load formulations
- Individual colored proteins to allow confirmation of transfer to membranes and orientation



DOMINIQUE DUTSCHER SAS

Improved accuracy

Amersham ECL Plex fluorescent Rainbow markers

Optimized for use with the Amersham ECL Plex™ system. Amersham ECL Plex is a system that enables detection of one or two proteins on a Western blot at the same time.

The system is validated for use on Typhoon™ imagers, and delivers broad dynamic range with high linearity.

The markers are specially optimized to provide visible marker bands on gels and membranes, as well as fluorescent images using Cy™3 and Cy5 channels.

Amersham ECL DualVue markers

Optimized for use with Amersham ECL™, Amersham ECL Prime, and Amersham ECL Select™. Amersham Western Blotting Systems ensure that you can always select the solution best suited to your application.

Accuracy

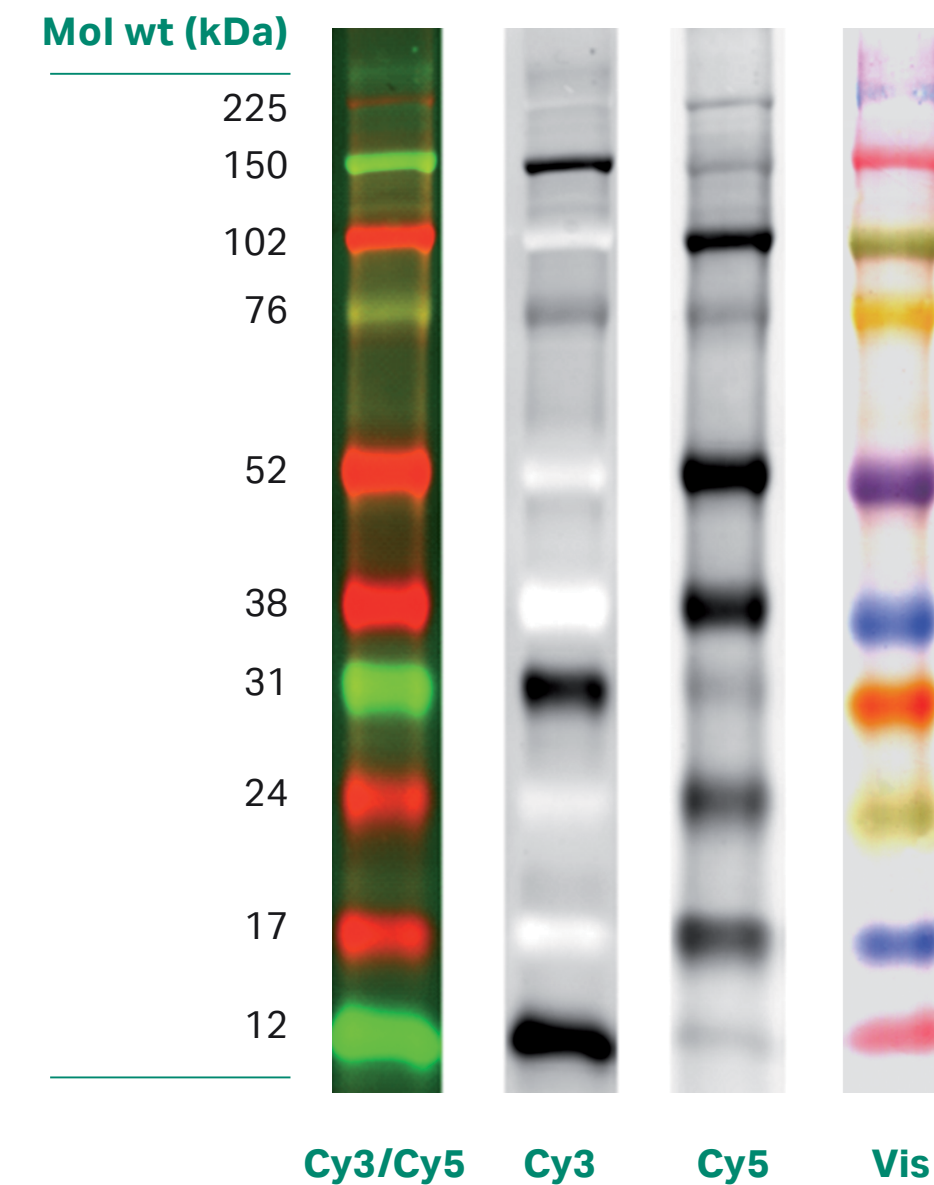
- Prestained markers indicate efficiency of protein transfer to membrane and blot orientation
- Tagged recombinant protein markers allow accurate calculation of molecular weight

Compatibility

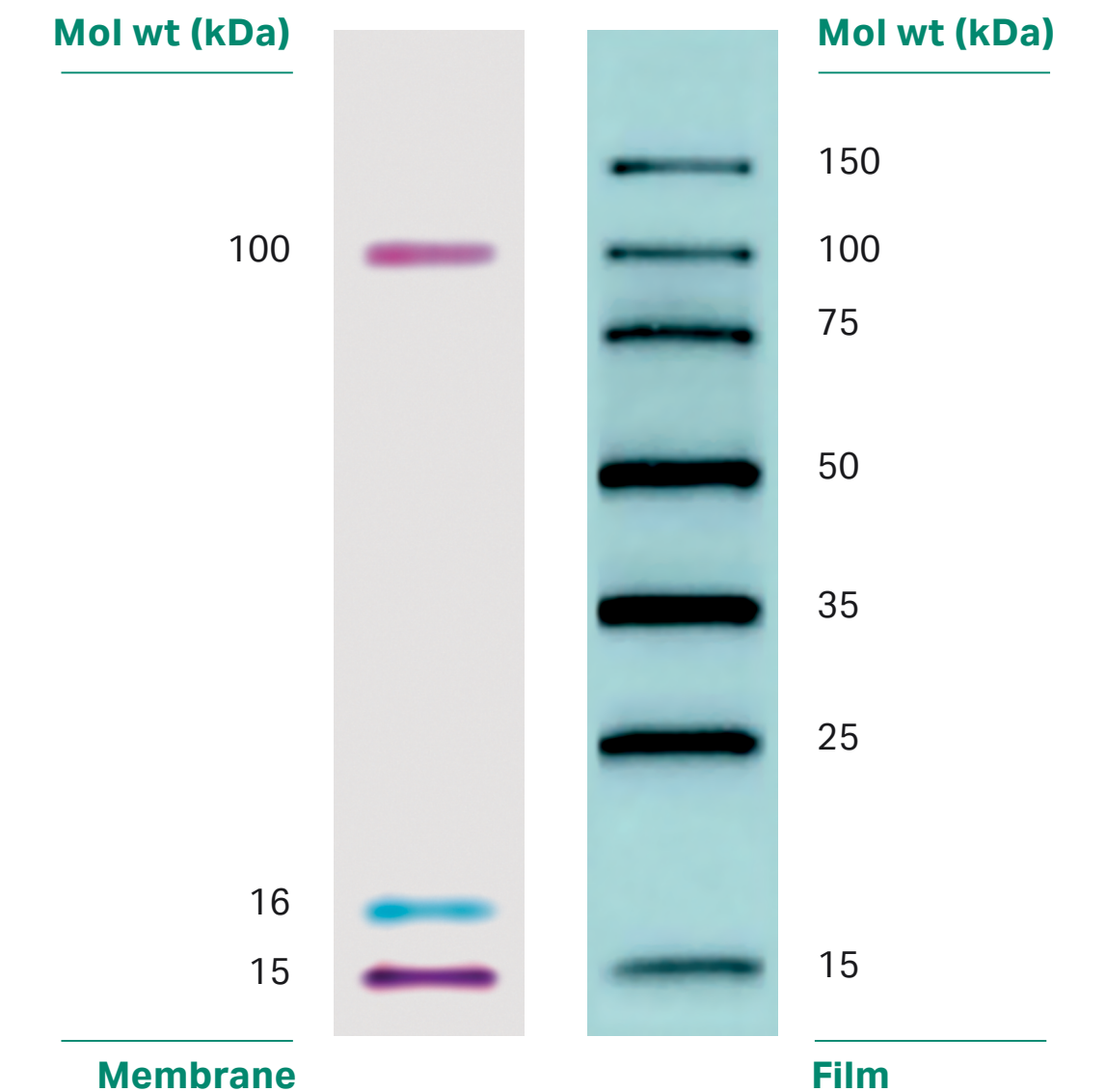
- Product is compatible with any HRP substrate as well as both PVDF and nitrocellulose membrane types
- Can be used with Amersham Hyperfilm™ or CCD imaging

Convenience

- Easy-to-follow protocol — one simple loading on the gel followed by addition of S-protein-HRP to the primary or secondary antibody incubation
- Each pack contains Amersham ECL DualVue™ markers and S-protein-HRP sufficient for 25 loadings



Amersham ECL Plex fluorescent Rainbow markers



Amersham ECL DualVue markers

Amersham Rainbow markers in detail

- Monitor progress of protein electrophoresis and assess transfer efficiency and molecular weight of blotted proteins without staining
- High intensity, prestained multicolored bands allow distinction of closely related proteins
- Full-range Amersham Rainbow markers (M_r 12 000 to 225 000) use ten separate proteins with six different colors
- High-range Amersham Rainbow markers (M_r 12 000 to 225 000) use eight separate proteins with six different colors
- Low-range Amersham Rainbow markers (M_r 3500 to 38 000) use seven separate proteins with five different colors
- For use on SDS-PAGE

Full-range Amersham Rainbow marker

Mol wt (kDa)	Color
225	Blue
150	Red
102	Green
76	Yellow
52	Purple
38	Blue
31	Orange
24	Green
17	Blue
12	Red

Code number: RPN 800E

High-range Amersham Rainbow marker

Mol wt (kDa)	Color
225	Blue
76	Yellow
52	Purple
38	Blue
31	Orange
24	Green
17	Blue
12	Red

Code number: RPN 756E

Low-range Amersham Rainbow marker

Mol wt (kDa)	Color
38	Blue
31	Orange
24	Green
17	Blue
12	Red
8.5	Yellow
3.5	Blue

Code number: RPN 755E

Selection guide

Whatever your gel and Western blotting requirements are, we offer the widest range of protein markers and systems to meet your needs.

Product	Visualization	Code number	Volume	Number of Samples
Amersham Rainbow markers (full-range)	Visible, multicolor	RPN 800E	250 µL	50
Amersham Rainbow markers (high-range)	Visible, multicolor	RPN 756E	250 µL	50
Amersham Rainbow markers (low-range)	Visible, multicolor	RPN 755E	250 µL	50
Amersham ECL Plex markers (full-range)	Fluorescent & visible, multicolor	RPN 850E	120 µL	50
Amersham ECL Plex markers (full-range)	Fluorescent & visible, multicolor	RPN 851E	500 µL	200
Amersham ECL DualVue markers (full-range)	Chemiluminescent, visible	RPN 810	215 µL	25

Other related markers

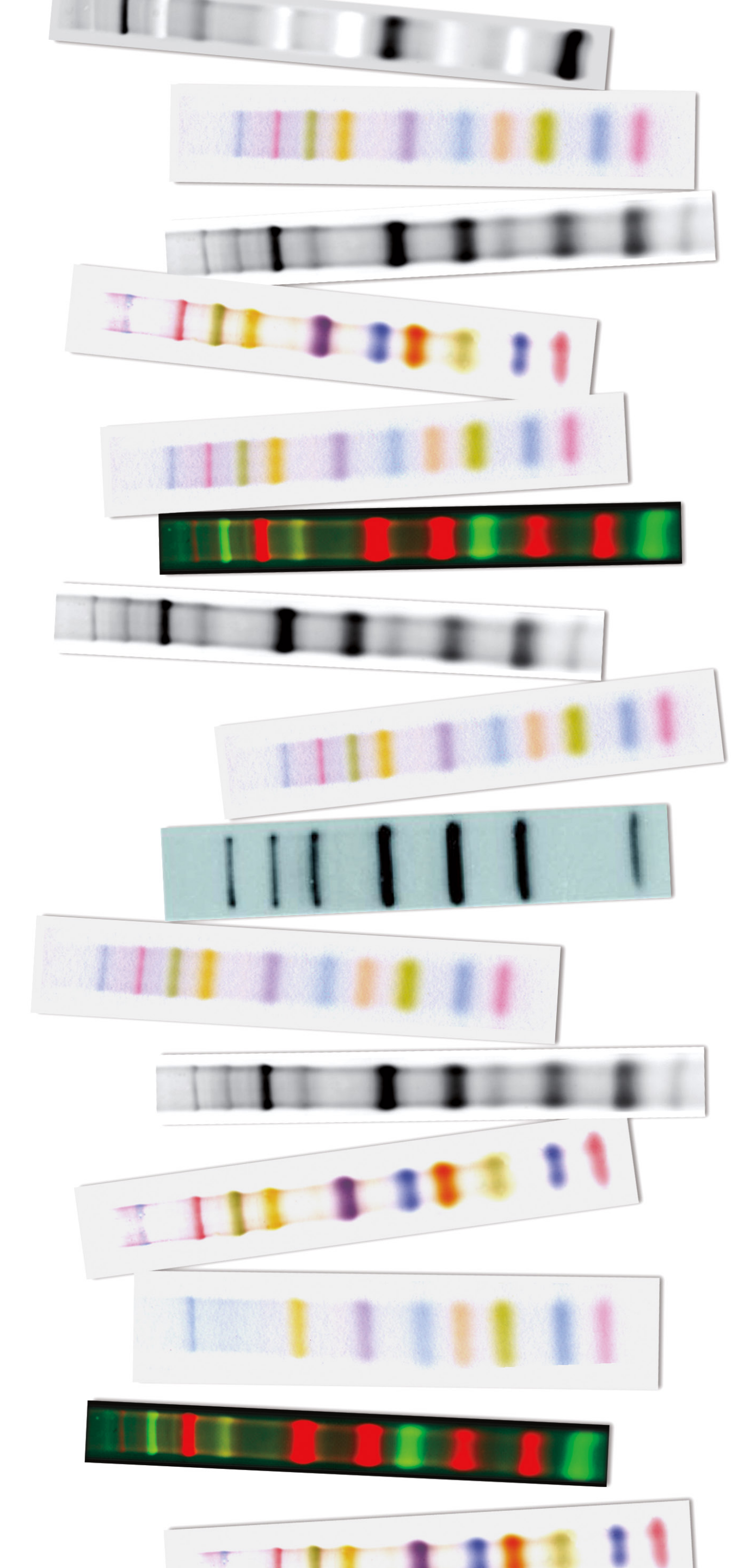
Product	Visualization	Code number
Protein molecular weight standards (Multiple ranges)	Unlabelled	17-0446-01
		17-0615-01
		17-0445-01

Related products

Amersham Western Blotting Systems deliver sensitivity, speed, and versatility. As the world's first chemiluminescent reagents, they have established a well-earned reputation for excellence. Amersham ECL, Amersham ECL Prime, and Amersham ECL Select are complemented by the Amersham ECL Plex fluorescent system, expanding your options even further.

	Amersham ECL	Amersham ECL Prime	Amersham ECL Select	Amersham ECL Plex
Recommended use	Routine Western blotting	Chemiluminescence	Low primary antibody concentration	Quantitative analysis, multiplexing of proteins of the same or different (M_r)
Sensitivity in model system (ng)*	~ 80	~ 20	~ 5	~ 5
Emission duration	< 2 h	< 24 h	< 8 h	> 3 months, protected from light
Recommended detection method	Amersham Hyperfilm Blue, CCD imagers	Amersham Hyperfilm ECL, CCD imagers	Amersham Hyperfilm ECL, CCD imagers	Fluorescence scanner and CCD imagers

* Detection of ERK 1/2 in HeLa cells lysate. Protein quantities refer to the total amount of loaded protein extracted from cell lysate, and protein of interest is just a fraction of that total amount.



DOMINIQUE DUTSCHER SAS

cytiva.com/ecl

Cytiva and the Drop logo are trademarks of Global Life Sciences IP Holdco LLC or an affiliate. Amersham, Cy, ECL, ECL DualVue, ECL Plex, ECL Select, Hyperfilm, Rainbow and Typhoon are trademarks of Global Life Sciences Solutions USA LLC or an affiliate doing business as Cytiva.

ECL Prime: This product or portions thereof is manufactured and sold under license from Cyanagen Srl and is subject of US patent 7,855,287, US Patent 7,803,573, and US Patent 9,040,252, together with other equivalent granted patents and patent applications in other countries.

The purchase of CyDye products includes a limited license to use the CyDye products for internal research and development but not for any commercial purposes. Cy and CyDye are trademarks of Global Life Sciences Solutions USA LLC or an affiliate doing business as Cytiva. A license to use the Cy and CyDye trademarks for commercial purposes is subject to a separate license agreement with Cytiva. Commercial use shall include:

1. Sale, lease, license or other transfer of the material or any material derived or produced from it.
2. Sale, lease, license or other grant of rights to use this material or any material derived or produced from it.
3. Use of this material to perform services for a fee for third parties, including contract research and drug screening.

If you require a commercial license to use the Cy and CyDye trademarks, please contact LSlicensing@cytiva.com.

©2021 Cytiva

For local office contact information, visit cytiva.com/contact

CY17330-18Jan21-BR

