

# SERVA FastLoad 1 kb DNA Ladder

[Pack Sizes](#)

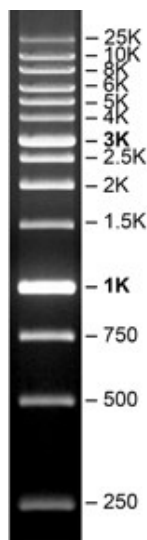
[Certificates of Analysis \(Lot.-no. - release date\)](#)

[PDF Documents](#)

[Additional Information](#)

[Related Products](#)

(DNA Leiter, DNA Standard, DNA Marker)



Ready-to-Use DNA standard for agarose gel electrophoresis containing 14 fragments from 250 - 25000 base pairs. The 1000 bp and 3000 bp bands have increased intensity and serve as reference points. For estimation of DNA mass of bands of similar size with comparable intensity, the approximate mass of each band is indicated (0.52 µg/load).

Recommended load is 5 µl/well. Contains Orange G and Xylene Cyanol as tracking dye. Stable for 6 months at 25 °C and for 12 months at 4 °C. For long term storage store at -20 °C.

HS: 38229000

Storage Temperature: -15 °C to -25 °C