

The background of the page is a blue-tinted image of a metal freezer rack. The rack has several circular holes and is shown from a perspective that highlights its depth and structure. The text 'PHCbi' and 'PHCbi' are faintly visible as watermarks on the rack.

INVENTORY SYSTEMS

FOR ULTRA-LOW TEMPERATURE FREEZERS

Organizing the space in your freezer can help you to make your work more efficient. Optimize and simplify access to stored materials with PHCbi inventory racks suitable for your application.

Rack Solutions for:

VIP ECO ULT Freezers | VIP ECO SMART ULT Freezers

FrostLess ULT Freezers | TwinGuard ULT Freezers

VIP ULT Freezers | PRO ULT Freezers

Cryogenic ULT Freezers



Optimize and simplify access to stored materials with inventory racks suitable for your application.

Organizing the space in your freezer can help you to make your work more efficient. Good sample management can result in both cost and time savings. By choosing the right racks, not only will efficiency be increased, but the risk of sample degradation due to exposure to ambient temperatures will be significantly reduced. This is a fact for any type of cell or tissue sample.

DURABLE LONG-TERM STORAGE

Racks are available in stainless steel and aluminium. Both racks types provide a durable and reliable long-term storage solution.

EASY SAMPLE ACCESS

Intuitive rack and handle design

MAXIMIZE FREEZER BOX STORAGE

Optimum freezer and footprint cost per box

EXCLUSIVELY DESIGNED FOR PHCbi

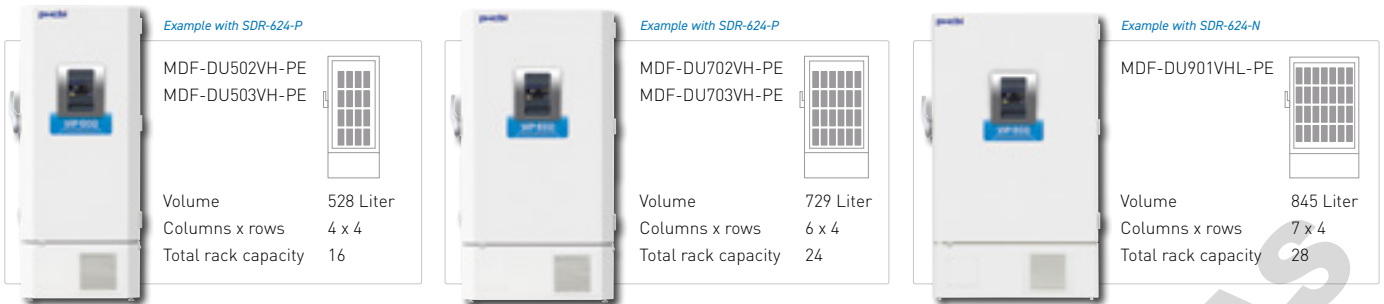
Made for upright and chest freezers

- Stainless steel or aluminium construction designed to withstand a lifetime of use.
- Racks are available for use with fibreboard or plastic boxes.
- Intuitive rack designs make it easy to access and return racks to the freezer.
- Maximum storage in freezer footprint.
- Sized to fit the PHCbi family of upright and chest freezers.
- Custom made racks to suit your unique storage requirements are available upon request.



UPRIGHT FREEZER INVENTORY RACKS

Models: MDF-DU502VH-PE | MDF-DU503VH-PE | MDF-DU702VH-PE | MDF-703VH-PE | MDF-DU901VHL-PE



ALUMINIUM RACK SOLUTIONS

Vertical rack type	Box type	Rack/quantity Aluminium	Freezer layout (Columns x Rows)	Total boxes	Rack dimensions*			Maximum box dimensions		
					Width	Depth	Height	Footprint of box max width*	Lid of box max width*	Box height max height*
MDF-DU502VH-PE / MDF-DU503VH-PE										
with trays	2 inch	4 x HCS-296	2x2	384	280	560	685	133	136	53
with trays	2 inch	16 x HCS-6564	4x4	384	140	560	339	130	133	53
side opening	2 inch	16 x NIR-224U	4x4	384	139	559	334	135	135	53
with trays	3 inch	16 x HCS-4804	4x4	256	140	560	320	130	133	75
side opening	3 inch	16 x NIR-316U	4x4	256	139	560	334	135	135	75
MDF-DU702VH-PE / MDF-703VH-PE										
with trays	2 inch	6 x HCS-296	3x2	576	280	560	685	133	136	53
with trays	2 inch	24 x HCS-6564	6x4	576	140	560	339	130	133	53
side opening	2 inch	24 x NIR-224U	6x4	576	139	559	334	135	135	53
with trays	3 inch	24 x HCS-4804	6x4	384	140	560	320	130	133	75
side opening	3 inch	24 x NIR-316U	6x4	384	139	560	334	135	135	75
MDF-DU901VHL-PE										
with trays	2 inch	14 x HCS-5584 + 14 x HCS-6564	7x2 + 7x2	616	140	560	290/339	130	133	53
side opening	2 inch	14 x NIR-220U + 14 x NIR-224U	7x2 + 7x2	616	139	559	279/334	130	133	53
with trays	3 inch	14 x HCS-4804 + 14 x HCS-3804	7x2 + 7x2	392	140	560	340/279	130	133	75
side opening	3 inch	14 x NIR-316U + 14 x NIR-312U	7x2 + 7x2	392	139	559	324/279	135	135	75

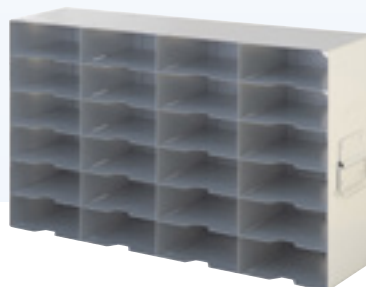
STAINLESS STEEL RACK SOLUTIONS

Vertical rack type	Box type	Rack/quantity Stainless steel	Freezer layout (Columns x Rows)	Total boxes	Rack dimensions*			Maximum box dimensions		
					Width	Depth	Height	Footprint of box max width*	Lid of box max width*	Box height max height*
MDF-DU502VH-PE / MDF-DU503VH-PE										
with trays	2 inch	16 x SDR-624-P	4x4	384	139.45	565.4	339.59	134	137	54,5
side opening	2 inch	16 x SUR-624-P	4x4	384	139.7	569.72	332.74	136	137	54,5
with trays	3 inch	16 x SDR-434-N	4x4	256	139.45	565.4	320.54	134	137	78
side opening	3 inch	16 x SUR-434-N	4x4	256	139.7	569.72	320.29	136	137	78
MDF-DU702VH-PE / MDF-703VH-PE										
with trays	2 inch	24 x SDR-624-P	6x4	576	139.45	565.4	339.59	134	137	54,5
side opening	2 inch	24 x SUR-624-P	6x4	576	139.7	569.72	332.74	136	137	54,5
with trays	3 inch	24 x SDR-434-N	6x4	384	139.45	565.4	320.54	134	137	78
side opening	3 inch	24 x SUR-434-N	6x4	384	139.7	569.72	320.29	136	137	78
MDF-DU901VHL-PE										
with trays	2 inch	28 x SDR-624-N	7x4	672	139.45	559.82	325.12	139.45	137	52
side opening	2 inch	28 x SUR-624-N	7x4	672	139.7	569.72	320.29	136	137	52
with trays	3 inch	14 x SDR-334-N + 14 x SDR-434-N	7x2 + 7x2	392	139.45	565.4	250.69/320.29	136	137	78
side opening	3 inch	14 x SUR-334-N + 14 x SUR-434-N	7x2 + 7x2	392	139.7	569.72	244.85/320.29	136	137	78

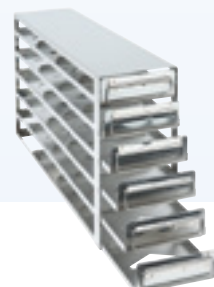
* Unit: mm



HCS-296



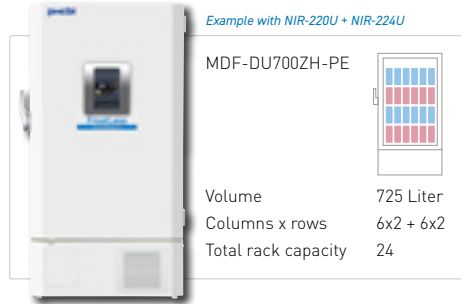
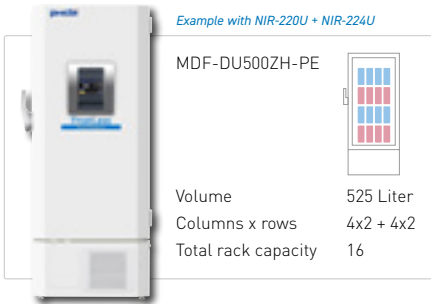
NIR-224U



SDR-624-N

UPRIGHT FREEZER INVENTORY RACKS

Models: MDF-DU500ZH-PE | MDF-DU700ZH-PE



ALUMINIUM RACK SOLUTIONS

Vertical rack type	Box type	Rack/quantity Aluminium	Freezer layout (Columns x Rows)	Total boxes	Rack dimensions*			Maximum box dimensions		
					Width	Depth	Height	Footprint of box max width*	Lid of box max width*	Box height max height*
MDF-DU500ZH-PE										
with trays	2 inch	8x HCS-5584 + 8x HCS-6564	4x2 + 4x2	352	139	560	290/339	133	133	53
side opening	2 inch	8x NIR-220U + 8x NIR-224U	4x2 + 4x2	352	140	560	290/339	133	133	53
with trays	3 inch	8x HCS-3964 + 8x HCS-4854	4x2 + 4x2	224	139	560	290/339	133	133	90/80
side opening	3 inch	8x NIR-312U X 8x NIR-316U	4x2 + 4x2	224	140	560	290/339	133	133	90/80
with trays	2 inch	4x HCS-519	2x2	352	280	560	640	133	133	53
MDF-DU700ZH-PE										
with trays	2 inch	12x HCS-5584 + 12x HCS-6564	6x2 + 6x2	528	139	560	290/339	133	133	53
side opening	2 inch	12x NIR-220U + 12x NIR-224U	6x2 + 6x2	528	140	560	290/339	133	133	53
with trays	3 inch	12x HCS-3964 + 12x HCS-4854	6x2 + 6x2	336	139	560	290/339	133	133	90/80
side opening	3 inch	12x NIR-312U X 12x NIR-316U	6x2 + 6x2	336	140	560	290/339	133	133	90/80
with trays	2 inch	6x HCS-519	3x2	528	280	560	640	133	133	53

STAINLESS STEEL RACK SOLUTIONS

Vertical rack type	Box type	Rack/quantity Aluminium	Freezer layout (Columns x Rows)	Total boxes	Rack dimensions*			Maximum box dimensions		
					Width	Depth	Height	Footprint of box max width*	Lid of box max width*	Box height max height*
MDF-DU500ZH-PE										
with trays	2 inch	8x SDR-624-P + 8x SDR-524-P	4x2 + 4x2	352	139	565	325/289	134	137	52/54
side opening	2 inch	8x SUR-624-P + 8x SUR-524-P	4x2 + 4x2	352	140	570	320/280	136	137	52/54
with trays	3 inch	8x SDR-434-N + 8x SDR-334-N	4x2 + 4x2	224	139	565	321/251	134	137	78
side opening	3 inch	8x SUR-434-N + 8x SUR-334-N	4x2 + 4x2	224	140	570	320/245	136	137	78
MDF-DU700ZH-PE										
with trays	2 inch	12x SDR-624-P + 12x SDR-524-P	6x2 + 6x2	528	139	565	325/289	134	137	52/54
side opening	2 inch	12x SUR-624-P + 12x SUR-524-P	6x2 + 6x2	528	140	570	320/280	136	137	52/54
with trays	3 inch	12x SDR-434-N + 12x SDR-334-N	6x2 + 6x2	336	139	565	321/251	134	137	78
side opening	3 inch	12x SUR-434-N + 12x SUR-334-N	6x2 + 6x2	336	140	570	320/245	136	137	78

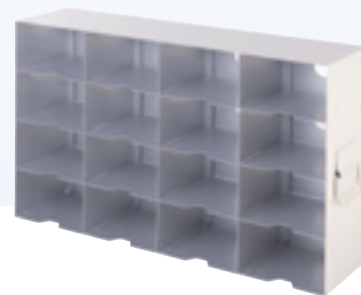
* Unit: mm



HCS-32-5584/143



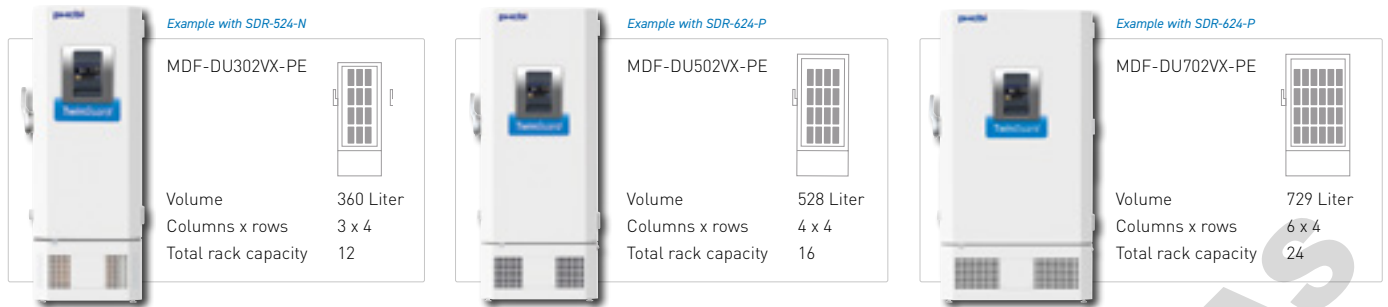
NIR-312U



NIR-316U

UPRIGHT FREEZER INVENTORY RACKS

Models: MDF-DU302VX-PE | MDF-DU502VX-PE | MDF-DU702VX-PE



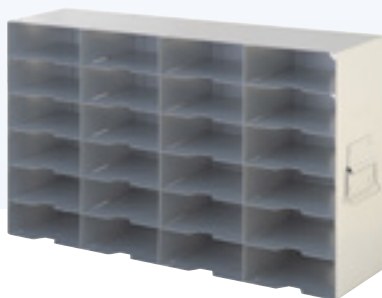
ALUMINIUM RACK SOLUTIONS

Vertical rack type	Box type	Rack/quantity Aluminium	Freezer layout (Columns x Rows)	Total boxes	Rack dimensions*			Maximum box dimensions		
					Width	Depth	Height	Footprint of box max width*	Lid of box max width*	Box height max height*
MDF-DU302VX-PE										
with trays	2 inch	12 x HCS-32-5584/143	3x4	240	143	560	280	133	136	53
side opening	2 inch	12 x NIR-220U	3x4	240	139	559	279	135	135	53
with trays	3 inch	12 x HCS-32-3804/143	3x4	144	143	560	232	133	136	71
side opening	3 inch	12 x NIR-312U	3x4	144	139	559	279	135	135	88
MDF-DU502VX-PE										
with trays	2 inch	4 x HCS-296	2x2	384	280	560	685	133	136	53
with trays	2 inch	16 x HCS-6564	4x4	384	140	560	339	130	133	53
side opening	2 inch	16 x NIR-224U	4x4	384	139	559	334	135	135	53
with trays	3 inch	16 x HCS-4804	4x4	256	140	560	320	130	133	75
side opening	3 inch	16 x NIR-316U	4x4	256	139	560	334	135	135	75
MDF-DU702VX-PE										
with trays	2 inch	6 x HCS-296	3x2	576	280	560	685	133	136	53
with trays	2 inch	24 x HCS-6564	6x4	576	140	560	339	130	133	53
side opening	2 inch	24 x NIR-224U	6x4	576	139	559	334	135	135	53
with trays	3 inch	24 x HCS-4804	6x4	384	140	560	320	130	133	75
side opening	3 inch	24 x NIR-316U	6x4	384	139	559	324	135	135	75

STAINLESS STEEL RACK SOLUTIONS

Vertical rack type	Box type	Rack/quantity Stainless steel	Freezer layout (Columns x Rows)	Total boxes	Rack dimensions*			Maximum box dimensions		
					Width	Depth	Height	Footprint of box max width*	Lid of box max width*	Box height max height*
MDF-DU302VX-PE										
with trays	2 inch	12 x SDR-524-N	3x4	240	139.45	559.82	288.80	134	138	54
side opening	2 inch	12 x SUR-524-N	3x4	240	139.7	569.72	279.65	137	138	54
with trays	3 inch	12 x SDR-334-N	3x4	144	139.45	565.4	250.69	134	138	78
side opening	3 inch	12 x SUR-334-N	3x4	144	139.7	569.72	244.85	137	138	78
MDF-DU502VX-PE										
with trays	2 inch	16 x SDR-624-P	4x4	384	139.45	565.4	339.59	134	137	54,5
side opening	2 inch	16 x SUR-624-P	4x4	384	139.7	569.72	332.74	136	137	54,5
with trays	3 inch	16 x SDR-434-N	4x4	256	139.45	565.4	320.54	134	137	78
side opening	3 inch	16 x SUR-434-N	4x4	256	139.7	569.72	320.29	136	137	78
MDF-DU702VX-PE										
with trays	2 inch	24 x SDR-624-P	6x4	576	139.45	565.4	339.59	134	137	54,5
side opening	2 inch	24 x SUR-624-P	6x4	576	139.7	569.72	332.74	136	137	54,5
with trays	3 inch	24 x SDR-434-N	6x4	384	139.45	565.4	320.54	134	137	78
side opening	3 inch	24 x SUR-434-N	6x4	384	139.7	569.72	320.29	136	137	78

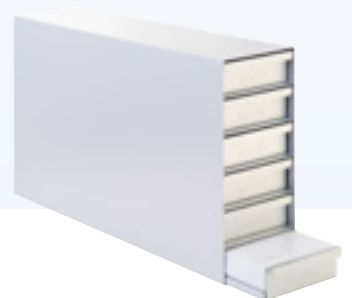
* Unit: mm



NIR-224U



NIR-316U




HCS-6564SB

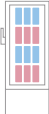
UPRIGHT FREEZER INVENTORY RACKS

Models: MDF-U33V-PE | MDF-DU300H-PE

Example with 6x NIR-216U + 6x NIR-220U




MDF-U33V-PE




Volume 333 Liter
Columns x rows 3x2 + 3x2
Total rack capacity 12

Example with 6x NIR-216U + 6x NIR-220U



MDF-DU300H-PE



Volume 333 Liter
Columns x rows 3x2 + 3x2
Total rack capacity 12

ALUMINIUM RACK SOLUTIONS

Vertical rack type	Box type	Rack/quantity Aluminium	Freezer layout (Columns x Rows)	Total boxes	Rack dimensions*			Maximum box dimensions		
					Width	Depth	Height	Footprint of box max width*	Lid of box max width*	Box height max height*
MDF-U33V-PE / MDF-DU300H-PE										
with trays	2 inch	6 x HCS-32-4584/143 + 6 x HCS-32-5584/143	3x2 + 3x2	216	143	560	232/280	133	136	53
side opening	2 inch	6 x NIR-216U + 6 x NIR-220U	3x2 + 3x2	216	139	559	232/279	135	135	53
with trays	3 inch	12 x HCS-32-3804/143	3x4	144	143	560	232	133	136	71
side opening	3 inch	12 x NIR-312U	3x4	144	139	559	279	135	135	88

STAINLESS STEEL RACK SOLUTIONS

Vertical rack type	Box type	Rack/quantity Stainless steel	Freezer layout (Columns x Rows)	Total boxes	Rack dimensions*			Maximum box dimensions		
					Width	Depth	Height	Footprint of box max width*	Lid of box max width*	Box height max height*
MDF-U33V-PE / MDF-DU300H-PE										
with trays	2 inch	6 x SDR-424-N + 6 x SDR-524-N	3x2 + 3x2	216	139.45	565.4	288.79 / 325.12	134	137	54
side opening	2 inch	6 x SUR-424-N + 6 x SUR-524-N	3x2 + 3x2	216	139.7	569.72	233.68 / 279.65	134	137	54
with trays	3 inch	12 x SDR-334-N	3x4	144	139.45	565.4	250.69	134	137	78
side opening	3 inch	12 x SUR-334-N	3x4	144	139.7	569.72	244.85	136	137	78

* Unit: mm



NIR-220U



HCS-32-5584/143




SDR-334-N

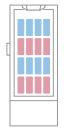
UPRIGHT FREEZER INVENTORY RACKS

Models: MDF-U55V-PE | MDF-U76V-PE

Example with 8x SDR-334-N + 8x SDR-434-N




MDF-U55V-PE




Volume 519 Liter
Columns x rows 4x2 + 4x2
Total rack capacity 16

Example with 12x SDR-334-N + 12x SDR-434-N



MDF-U76V-PE



Volume 728 Liter
Columns x rows 6x2 + 6x2
Total rack capacity 24

ALUMINIUM RACK SOLUTIONS

Vertical rack type	Box type	Rack/quantity Aluminium	Freezer layout (Columns x Rows)	Total boxes	Rack dimensions*			Maximum box dimensions		
					Width	Depth	Height	Footprint of box max width*	Lid of box max width*	Box height max height*
MDF-U55V-PE										
with trays	2 inch	4 x HCS-519	2x2	352	280	560	640	133	136	53
with trays	2 inch	8 x HCS-5584 + 8 x HCS-6564	4x2 + 4x2	352	140	560	290/339	130	133	53
side opening	2 inch	8 x NIR-220U + 8 x NIR-224U	4x2 + 4x2	352	139	559	279/334	130	133	53
with trays	3 inch	8 x HCS-4804 + 8 x HCS-3804	4x2 + 4x2	224	140	560	340/279	130	133	75
side opening	3 inch	8 x NIR-316U + 8 x NIR-312U	4x2 + 4x2	224	139	559	324/279	135	135	75
MDF-U76V-PE										
with trays	2 inch	6 x HCS-519	3x2	528	280	560	640	133	136	53
with trays	2 inch	12 x HCS-5584 + 12 x HCS-6564	6x2 + 6x2	528	140	560	290/339	130	133	53
side opening	2 inch	12 x NIR-220U + 12 x NIR-224U	6x2 + 6x2	528	139	559	279/334	130	133	53
with trays	3 inch	12 x HCS-4804 + 12 x HCS-3804	6x2 + 6x2	336	140	560	340/279	130	133	75
side opening	3 inch	12 x NIR-316U + 12 x NIR-312U	6x2 + 6x2	336	139	559	324/279	135	135	75

STAINLESS STEEL RACK SOLUTIONS

Vertical rack type	Box type	Rack/quantity Stainless steel	Freezer layout (Columns x Rows)	Total boxes	Rack dimensions*			Maximum box dimensions		
					Width	Depth	Height	Footprint of box max width*	Lid of box max width*	Box height max height*
MDF-U55V-PE										
with trays	2 inch	8 x SDR-524-N + 8 x SDR-624-N	4x2 + 4x2	352	139.45	565.4	288.79 / 325.12	134	137	54 / 52
side opening	2 inch	8 x SUR-524-N + 8 x SUR-624-N	4x2 + 4x2	352	139.7	569.72	279.65 / 320.29	136	137	54/52
with trays	3 inch	8 x SDR-334-N + 8 x SDR-434-N	4x2 + 4x2	224	139.45	565.4	250.69 / 320.54	134	137	78
side opening	3 inch	8 x SUR-334-N + 8 x SUR-434-N	4x2 + 4x2	224	139.7	569.72	244.85 / 320.29	136	137	78
MDF-U76V-PE										
with trays	2 inch	24 x SDR-624-N	6x4	576	139.45	565.4	325.12	134	137	52
side opening	2 inch	24 x SUR-624-N	6x4	384	139.7	569.72	320.29	136	137	52
with trays	3 inch	12 x SDR-334-N + 12 x SDR-434-N	6x2 + 6x2	336	139.45	565.4	250.69 / 320.29	134	137	78
side opening	3 inch	12 x SUR-334-N + 12 x SUR-434-N	6x2 + 6x2	336	139.7	569.72	244.85 / 320.29	136	137	78

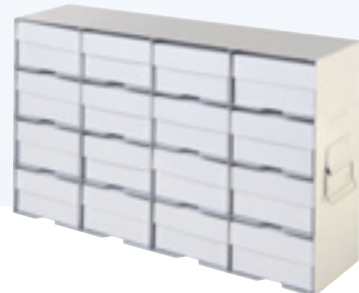
* Unit: mm



HCS-4804




HCS-519



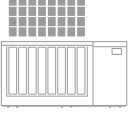

NIR-316UB

CHEST FREEZER INVENTORY RACKS

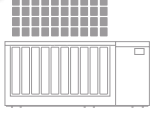

Models: MDF-DC500VX-PE | MDF-DV700VX-PE | MDF-C8V1-PE




MDF-DC500VX-PE
Volume 575 Liter
Columns x rows 8 x 4
Total rack capacity 32

MDF-DC700VX-PE
Volume 715 Liter
Columns x rows 10 x 4
Total rack capacity 40

MDF-C8V1-PE
Volume 84 Liter
Columns x rows 3 x 2
Total rack capacity 6



ALUMINIUM RACK SOLUTIONS

Vertical rack type	Box type	Rack/quantity Aluminium	Freezer layout (Columns x Rows)	Total boxes	Rack dimensions*			Maximum box dimensions		
					Width	Depth	Height	Footprint of box max width*	Lid of box max width*	Box height
MDF-DC500VX-PE										
side opening	2 inch	32 x NIR-213C	8x4	416	139	137	745	133	133	53
side opening	3 inch	32 x NIR-309C	8x4	288	139	137	745	133	133	75
MDF-DC700VX-PE										
side opening	2 inch	40 x NIR-213C	10x4	520	139	137	745	133	133	53
side opening	3 inch	40 x NIR-309C	10x4	360	139	137	745	133	133	75
MDF-C8V1-PE										
side openings	2 inch	6 x NIR-207C	3x2	42	142	141	403	133	133	53
side openings	3 inch	6 x NIR-305C	3x2	30	142	141	403	133	133	75

STAINLESS STEEL RACK SOLUTIONS

Vertical rack type	Box type	Rack/quantity Stainless steel	Freezer layout (Columns x Rows)	Total boxes	Rack dimensions*			Maximum box dimensions		
					Width	Depth	Height	Footprint of box max width*	Lid of box max width*	Box height
MDF-DC500VX-PE										
side opening	2 inch	32 x SCR-132-N	8x4	416	139.7	144	725.93	136	142	54
side opening	3 inch	32 x SCR-093-N	8x4	288	139.7	144	738.63	136	142	75
MDF-DC700VX-PE										
side opening	2 inch	40 x SCR-132-N	10x4	520	139.7	144	725.93	136	142	54
side opening	3 inch	40 x SCR-093-N	10x4	360	139.7	144	738.63	136	142	75
MDF-C8V1-PE										
side openings	2 inch	6 x SCR-072-N	3x2	42	139.7	144	397	136	142	54
side openings	3 inch	6 x SCR-053-N	3x2	30	139.7	144	414.78	136	142	75

* Unit: mm



NIR-213C




NIR-309C





SCR-093-N

CHEST FREEZER INVENTORY RACKS


Models: MDF-DC102VH-PE | MDF-DC202VH-PE



MDF-DC102VH-PE
 Volume 84 Liter
 Columns x rows 3 x 2
 Total rack capacity 6

MDF-DC202VH-PE
 Volume 180 Liter
 Columns x rows 5x3 + 2
 Total rack capacity 17



ALUMINIUM RACK SOLUTIONS

Vertical rack type	Box type	Rack/quantity Aluminium	Freezer layout (Columns x Rows)	Total boxes	Rack dimensions*			Maximum box dimensions		
					Width	Depth	Height	Footprint of box max width*	Lid of box max width*	Box height max height*
MDF-DC102VH-PE										
side opening	2 inch	6 x NIR-207C	3x2	42	142	141	403	133	133	53
ladder type	2 inch	21 x VC-660/3ST	6x3 + 3	63	58	133	424	133	133	53
side opening	3 inch	6 x NIR-305C	3x2	30	142	141	403	133	133	75
side opening + ladder type	2 inch	6 x NIR-207C + 5x VC-660/3ST	3x2 + 5	57	142/58	141/133	403/424	133	133	53
MDF-DC202VH-PE										
side opening	2 inch	17 x NIR-207C	5x3 + 2	119	142	141	403	133	133	53
ladder type	2 inch	47 x VC-660/3ST	13x3 + 8	141	58	133	424	133	133	53
side opening	3 inch	17 x NIR-305C	5x3 + 2	85	142	141	403	133	133	75

STAINLESS STEEL RACK SOLUTIONS

Vertical rack type	Box type	Rack/quantity Stainless steel	Freezer layout (Columns x Rows)	Total boxes	Rack dimensions*			Maximum box dimensions		
					Width	Depth	Height	Footprint of box max width*	Lid of box max width*	Box height max height*
MDF-DC102VH-PE										
side opening	2 inch	6 x SCR-072-N	3x2	42	139,7	144	397	136	142	54
side opening	3 inch	6 x SCR-053-N	3x2	30	139,70	144	414,78	136	142	75
MDF-DC202VH-PE										
side opening	2 inch	17 x SCR-072-N	5x3 + 2	119	139,7	144	397	136	142	54
side opening	3 inch	17 x SCR-053-N	5x3 + 2	85	139,70	144	414,78	136	142	75

* Unit: mm



NIR-305C




NIR-207C





VC-660/3ST

CHEST FREEZER INVENTORY RACKS


Models: MDF-1156(ATN)-PE | MDF-C2156VAN-PE



MDF-1156(ATN)-PE
 Volume 128 Liter
 Columns x rows 3 x 3
 Total rack capacity 9

MDF-C2156VAN-PE
 Volume 231 Liter
 Columns x rows 5 x 3
 Total rack capacity 15



ALUMINIUM RACK SOLUTIONS

Vertical rack type	Box type	Rack/quantity Aluminium	Freezer layout (Columns x Rows)	Total boxes	Rack dimensions*			Maximum box dimensions		
					Width	Depth	Height	Footprint of box max width*	Lid of box max width*	Box height max height*
MDF-1156(ATN)-PE										
side opening	2 inch	9 x NIR-209C	3x3	81	142	141	516	133	133	53
side opening	3 inch	9 x NIR-306C	3x3	54	142	141	516	133	133	75
MDF-C2156VAN-PE										
opening	2 inch	15 x NIR-210C	5x3	150	142	141	590	133	133	53
side opening	3 inch	15 x NIR-307C	5x3	105	142	141	590	133	133	78

STAINLESS STEEL RACK SOLUTIONS

Vertical rack type	Box type	Rack/quantity Stainless steel	Freezer layout (Columns x Rows)	Total boxes	Rack dimensions*			Maximum box dimensions		
					Width	Depth	Height	Footprint of box max width*	Lid of box max width*	Box height max height*
MDF-1156(ATN)-PE										
side opening	2 inch	9 x SCR-102-N	3x3	90	139.7	144	564.13	136	142	54
side opening	3 inch	9 x SCR-063-N	3x3	54	139.7	144	494.28	136	142	75
MDF-C2156VAN-PE										
side opening	2 inch	15 x SCR-102-N	5x3	150	139.7	144	564.13	136	142	54
side opening	3 inch	15 x SCR-073-N	5x3	105	139.7	144	575.31	136	142	75

* Unit: mm



NIR-209C



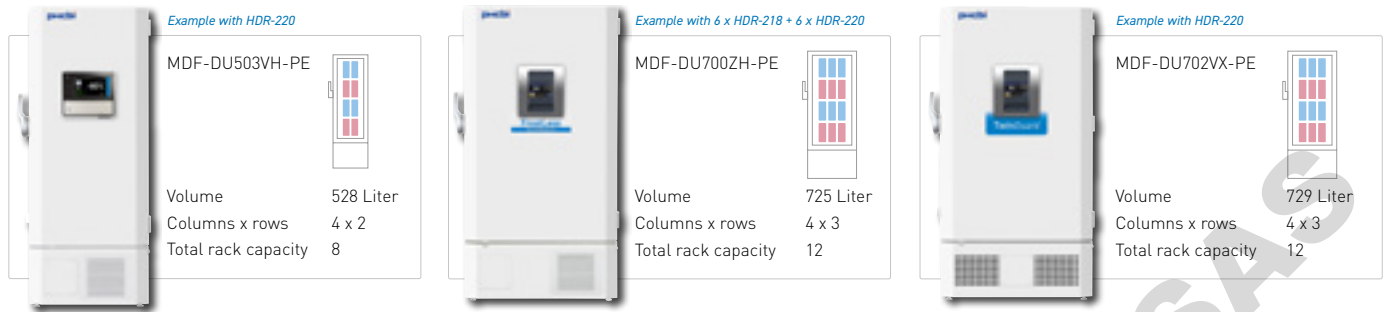
SCR-102-N



SCR-073-N

HORIZONTAL DRAWER RACKS

Models: MDF-DU302VX-PE | MDF-DU502VH-PE | MDF-DU502VX-PE | MDF-DU503VH-PE | MDF-DU500ZH-PE
 MDF-DU702VH-PE | MDF-DU702VX-PE | MDF-DU703VH-PE | MDF-DU700ZH-PE | MDF-DU901VHL-PE
 MDF-U33V-PE | MDF-DU300H-PE | MDF-U55V-PE | MDF-U76V-PE



ALUMINIUM RACK SOLUTIONS**

Horizontal Drawer Rack	Rack/quantity Aluminium	Freezer layout (Columns x Rows)	Rack dimensions*			Drawer Quantity	Drawer Dimensions*		
			Width	Depth	Height		Width	Depth	Height
MDF-DU302VX-PE									
with drawers	8 x HDR-302/2	2 x 4 HDR-302/2	225	560	280	2	215	555	130
with drawers	8 x HDR-302/3	2 x 4 HDR-302/3	225	560	280	3	215	555	80
MDF-DU502VH-PE MDF-DU502VX-PE MDF-DU503VH-PE									
with drawers	8 x HDR-220	2 x 4 HDR-220	280	560	339	2	270	555	155
with drawers	8 x HDR-224	2 x 4 HDR-224	280	560	339	3	270	555	95
MDF-DU500ZH-PE									
with drawers	4 x HDR-218 + 4 x HDR-220	2 x 2 HDR-218 + 2 x 2 HDR-220	280	560	290/339	2	270	555	143/167
MDF-DU702VH-PE MDF-DU702VX-PE									
with drawers	8 x HDR-216H	2 x 4 HDR-216H	420	560	339	2	410	555	155
with drawers	12 x HDR-220	3 x 4 HDR-220	280	560	339	2	270	555	155
with drawers	12 x HDR-224	3 x 4 HDR-224	280	560	339	3	270	555	95
MDF-DU-700ZH-PE									
with drawers	6 x HDR-218 + 6 x HDR-220	2 x 3 HDR-218 + 2 x 3 HDR-220	280	560	290/339	2	270	555	143/167
MDF-DU901VHL-PE									
with drawers	6 x HDR-230H + 6 x HDR-232H	3 x 2 HDR-230H + 3 x 2 HDR-232H	325	560	290/339	2	315	555	135/155
with drawers	6 x HDR-334H + 6 x HDR-336H	3 x 2 HDR-334H + 3 x 2 HDR-336H	325	560	290/339	3	315	555	80/95
MDF-U33V-PE MDF-DU300H-PE									
with drawers	4 x HDR-302/2 + 4 x HDR-33/2/230	2 x 2 HDR-302/2 + 2 x 2 HDR-33/2/230	225	560	280/230	2	215	555	130/110
with drawers	4 x HDR-302/3 + 4 x HDR-33/3/230	2 x 2 HDR-302/3 + 2 x 2 HDR-33/3/230	225	560	280/230	3	215	555	80/70
MDF-U55V-PE									
with drawers	4 x HDR-218 + 4 x HDR-220	2 x 2 HDR-218 + 2 x 2 HDR-220	280	560	290/339	2	270	555	135/155
with drawers	4 x HDR-222 + 4 x HDR-224	2 x 2 HDR-222 + 2 x 2 HDR-224	280	560	290/339	3	270	555	80/95
MDF-U76V-PE									
with drawers	4 x HDR-214H + 4 x HDR-216H	2 x 2 HDR-214H + 2 x 2 HDR-216H	420	560	290/339	2	410	555	135/155
with drawers	6 x HDR-218 + 6 x HDR-220	3 x 2 HDR-218 + 3 x 2 HDR-220	280	560	290/339	2	270	555	135/155
with drawers	6 x HDR-222 + 6 x HDR-224	3 x 2 HDR-222 + 3 x 2 HDR-224	280	560	290/339	3	270	555	80/95

** Configurations for full freezers. Combinations with HDR racks and other inventory racks are possible upon request.

* Unit: mm



HDR-216H



HDR-220



DOMINIQUE DUTSCHER SAS

DHGBI

DHGBI

INVENTORY BOXES, DIVIDERS AND ACCESSORIES

PHCbi offers additional inventory boxes and dividers. Boxes are white, water-repellent fiberboard. Cell dividers are water-repellent fiberboard. Other boxes are available upon request.

		W x D x H	
B2C-S100	2" cardboard box with 100 cell divider	134 mm x 134 mm x 51 mm	
B3C-S100	3" cardboard box with 100 cell divider	134 mm x 134 mm x 77 mm	
B2C-S81	2" cardboard box with 81 cell divider	134 mm x 134 mm x 51 mm	
B3C-S81	3" cardboard box with 81 cell divider	134 mm x 134 mm x 77 mm	
B2C	2" cardboard box only	134 mm x 134 mm x 51 mm	
B3C	3" cardboard box only	134 mm x 134 mm x 77 mm	
D81	81 cell divider for cardboard box	124 mm x 124 mm x 32 mm	
D64	64 cell divider for cardboard box	124 mm x 124 mm x 32 mm	
PA-1 ¹⁾	2" polypropylene box	133 x 133 x 52 mm (box including lid)	
PA45 ²⁾	45 mm polypropylene box	133 x 133 x 45 mm (box including lid)	

Capacity per box may vary with type of vial used. Please confirm with your sales specialist the best solution.

¹⁾ A variety of fixed grids can be chosen (none / 49 / 64 / 81 cells) ²⁾ A variety of fixed grids can be chosen (none / 49 / 81 cells)



DOMINIQUE PUTSCHER SAS



PHC Europe

A Member of PHC Group

Eikdonk 1 | 4825 AZ Breda | Netherlands
T: +31 (0) 76 543 3833
www.phcd.com/eu/biomedical

