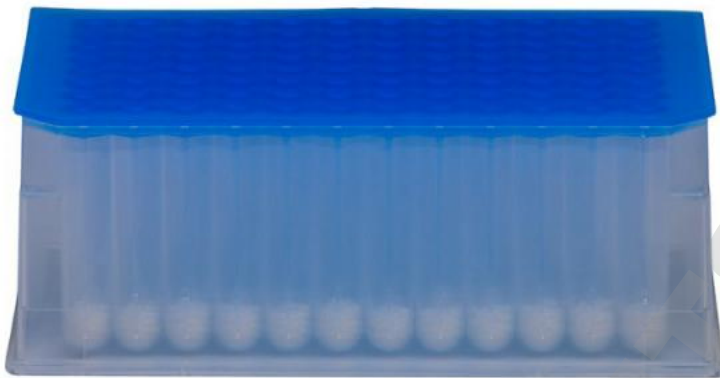


2 ML DEEP WELL PLATES PRE-FILLED WITH 1.4 MM CERAMIC BEADS – 2 PACK

Sku: 27-6011



GENERAL INFO

Pre-filled 2 mL 96 deep well plates with 1.4 mm Ceramic beads

Bead Ruptor bead beating tubes are pre-filled with an optimized amount of lysing matrix to provide efficient and high yield sample homogenates.

Product Features:

- 2.0 mL polypropylene 96 deep well plates. Wells pre-filled with 1.4 mm Ceramic beads
- Recommended for: Operation on Bead Ruptor 96
- Certification: Nuclease and Inhibitor Free

SPECIFICATIONS

Tube material:	Polypropylene.
Recommended for:	Processing samples on Bead Ruptor 96
Well volume:	2.0 mL
Bead material:	1.4mm ceramic
Processing range :	0.4 mL to 1.5 mL
Temperature Range:	-80 to 121°C
Force:	4,000 x g
Certification:	Nuclease free