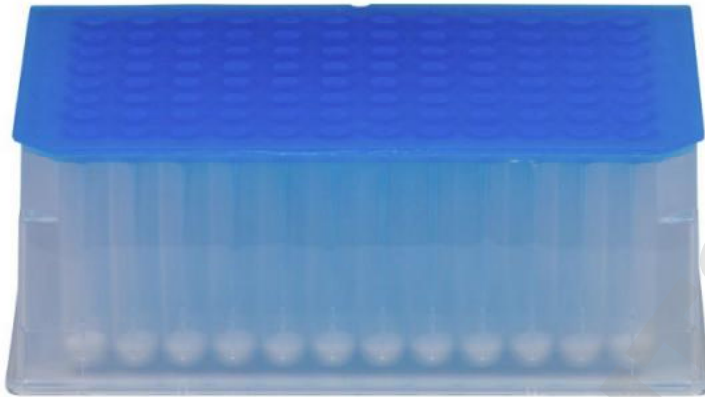


2 ML DEEP WELL PLATES PRE-FILLED WITH 0.1 MM CERAMIC BEADS – 2 PACK

Sku: 27-6006



GENERAL INFO

Pre-filled 2 mL 96 deep well plates with 0.1mm ceramic beads

Bead Ruptor bead beating tubes are pre-filled with an optimized amount of lysing matrix to provide efficient and high yield sample homogenates.

Product Features:

- 2.0 mL polypropylene 96 deep well plates. Wells pre-filled with 0.1 mm ceramic beads
- Recommended for: Operation on Bead Ruptor 96
- Certification: RNase & DNase Free

SPECIFICATIONS

Tube material:	Polypropylene.
Recommended for:	Processing samples on Bead Ruptor 96
Well volume:	2.0 mL
Bead material:	0.1mm ceramic
Processing range :	0.2 mL to 1.5 mL
Temperature Range:	-80 to 121°C
Force:	4,000 x g
Certification:	RNase & DNase free