

Gilson pipetman® Tips

Ergonomics • Features • Benefits



A Perfect Seal

Gilson PIPETMAN Tips have two solid sealing rings when used with PIPETMAN pipettes. This perfect seal provides more consistent and reliable measurements each and every time.

Ergonomic Tip Fitting

PIPETMAN® Tips and the PIPETMAN tip holders are designed to work in harmony, which means a low tip-mounting force and a perfect seal every time. Easy to mount, easy to eject.

Graduated Volume Markers

Volume graduations make it easy to visually check the volume aspirated.

Fully Traceable from the Manufacturer to Your Bench

The Gilson Trident guarantees quality. With identification and batch numbers on all PIPETMAN Tip packaging, you can be assured that quality is our number one priority.

Made of 100% Pure Virgin Polypropylene

PIPETMAN Tips are free of RNases, DNases, DNA, RNA, and Proteases ensuring there is no interference with your results. Unlike other brands, the pure virgin polypropylene tips are naturally hydrophobic without the added risk of coatings or treatments which can contaminate your samples.

Contamination Prevention with PIPETMAN Filter Tips

Gilson's high-density polyethylene filter blocks small particles down to 1 µm from entering your pipette, providing an effective barrier against aerosols and helping to protect your pipette.

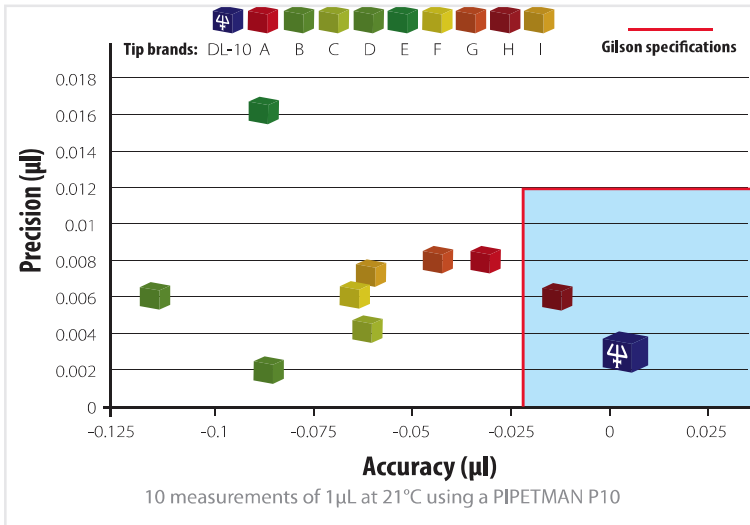
A Perfect Point

Imperfections in a tip's geometry can lead to excess droplets being released into your results. Gilson prides itself on its perfect point and smooth surface, ensuring that all of your sample is dispensed every time.

Quality Tips for Superior Results

Quality Tips for Quality Pipettes

PIPETMAN Tips Deliver Maximum Accuracy



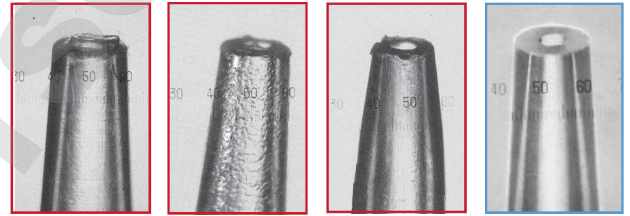
Did you know... Tips contribute up to 50% to the performance of your pipette? Gilson PIPETMAN Tips are manufactured to give you a perfect seal with PIPETMAN tip holders so you can be confident in the accuracy and precision of your results.

Third Party Study of Tip Accuracy:

- Company 1-** Imperfect aperture can cause solution to catch on the excess plastic, giving inaccurate results.
- Company 2-** A rough surface means this tip is not low retention. Solution can get caught in the grooves of the tip, providing inaccurate results.
- Company 3-** Excess plastic may cause solution to catch on the extra plastic. This tip will not give you a full sample.
- Gilson-** Smooth surface and perfect tip for precise results.

Gilson Specifications and certificate of calibration provided with each PIPETMAN pipette are valid only if the pipette is used with Gilson PIPETMAN Tips.

"The maximum permissible errors always apply to the total system of piston pipette and tip. When using pipette tips not delivered by the supplier, the supplier's declaration or certificate of conformity does not apply." (ISO 8655-2 piston pipettes)



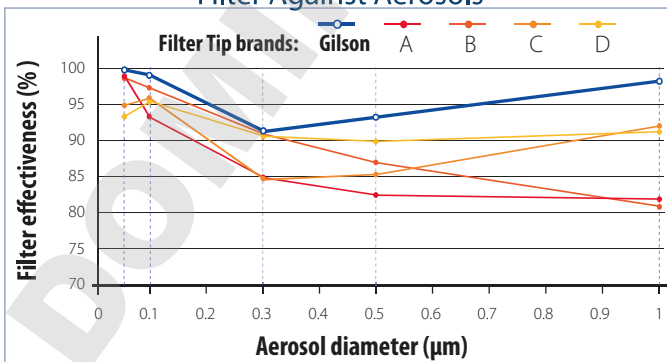
Company 1 Company 2 Company 3 Gilson

Low Binding Tips vs PIPETMAN Tips

No Dyes. no Silicone. No Antistatic Agents. Many tip manufacturers have to chemically coat their tips in order to give them low retention or low binding properties. When a substance is added to a tip, it can give the tip undesirable effects such as leaching of the coating into your samples. Unlike other brands, Gilson PIPETMAN Tips are produced from 100% pure virgin polypropylene, which is naturally hydrophobic and has low binding properties. With PIPETMAN Tips you can be sure that the integrity of your samples is preserved.

PIPETMAN Sterilized Filter Tips

PIPETMAN Filter Tips Provide an Effective Filter Against Aerosols



Prevent Contamination. Gilson's sterilized PIPETMAN Filter Tips offer a high-density polyethylene filter that blocks small particles down to 1µm from entering your pipette, providing an effective barrier against aerosol contamination.

Sterilized Tips. Gilson's line of standard sterilized PIPETMAN and Filter Tips are certified free of RNases, DNases, DNA, RNA, Proteases and trace metals. They are also free of biological contaminants with an SAL of 10⁻⁶ and are wrapped in medical device-quality plastic that provides a shield against contamination.

