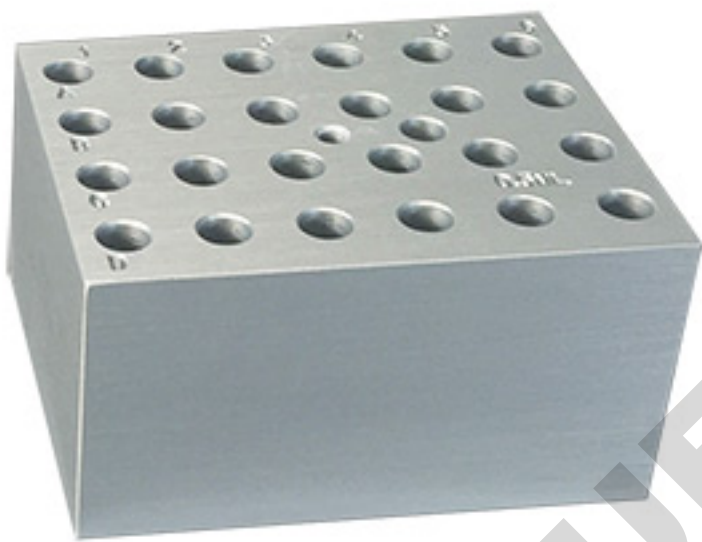


Catalog Number: BSW1500  
Capacity: 24 x 1.5ml  
Block Dimensions: 3.75 x 3 x 2 inches  
Hole Dimensions: 10.8 x 34.6 mm



Catalog Number: BSW1520  
Capacity: 24 x 1.5/2.0ml  
Block Dimensions: 3.75 x 3 x 2 inches  
Hole Dimensions: 10.8 x 35 mm



Catalog Number: BSW05  
Capacity: 24 x 0.5 ml  
Block Dimensions: 3.75 x 3 x 2 inches  
Hole Dimensions: 8.0 x 26.5 mm



Catalog Number: BSW15  
Capacity: 12 x 15 ml conical  
Block Dimensions: 3.75 x 3 x 3.25 inches  
Hole Dimensions: 17.3 x 76 mm



Catalog Number: BSW50  
Capacity: 5 x 50 ml conical  
Block Dimensions: 3.75 x 3 x 3.25 inches  
Hole Dimensions: 29.5 x 77.6 mm



Catalog Number: BSW10  
Capacity: 20 x 2.0 ml  
Block Dimensions: 3.75 x 3 x 2 inches  
Hole Dimensions: 10.8 x 41.8 mm

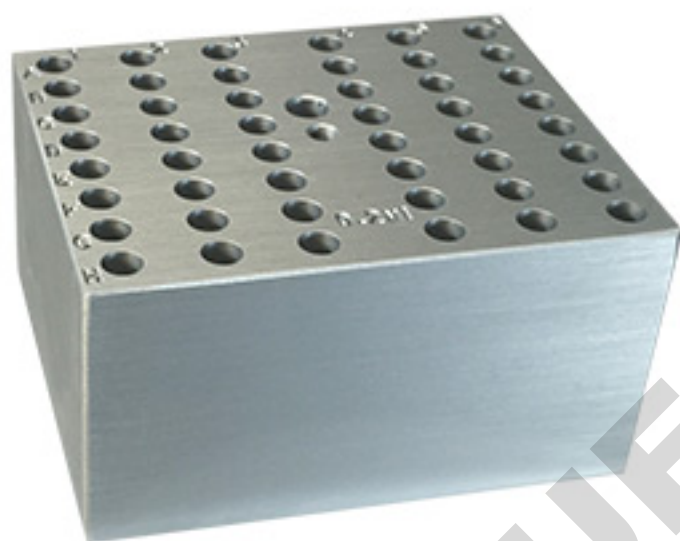




Catalog Number: BSW13  
Capacity: 20 x 13 mm  
Block Dimensions: 3.75 x 3 x 2 inches  
Hole Dimensions: 13.7 x 44.5 mm



Catalog Number: BSW1516  
Capacity: 12 x 10 ml  
Block Dimensions: 3.75 x 3 x 2 inches  
Hole Dimensions: 16.2 x 44.8 mm



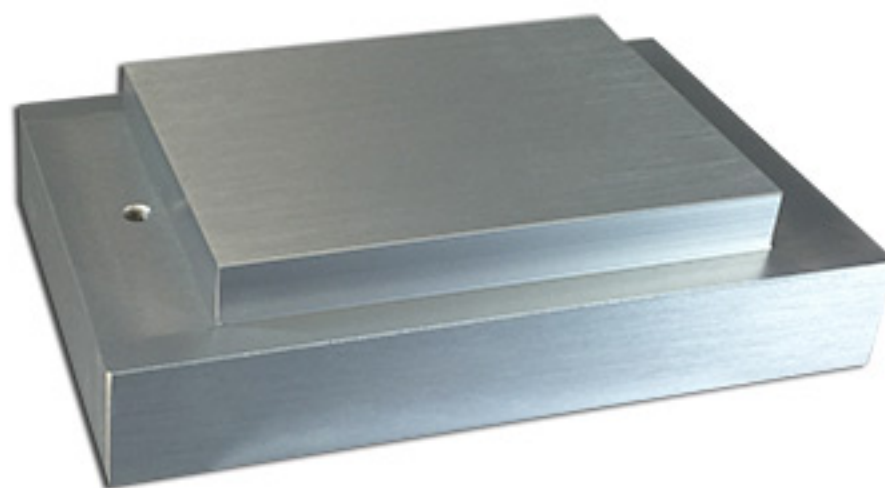
Catalog Number: BSW02  
Capacity: 48 x 0.2 ml or 6 PCR tube strips  
Block Dimensions: 3.75 x 3 x 2 inches  
Hole Dimensions: 6.0 x 14.0 mm



Catalog Number: BSWPCR2  
Capacity: 1 96 well PCR plate  
Block Dimensions: 6 x 3.75 x 1 inches  
Hole Dimensions: 4.9 x 11.5 mm

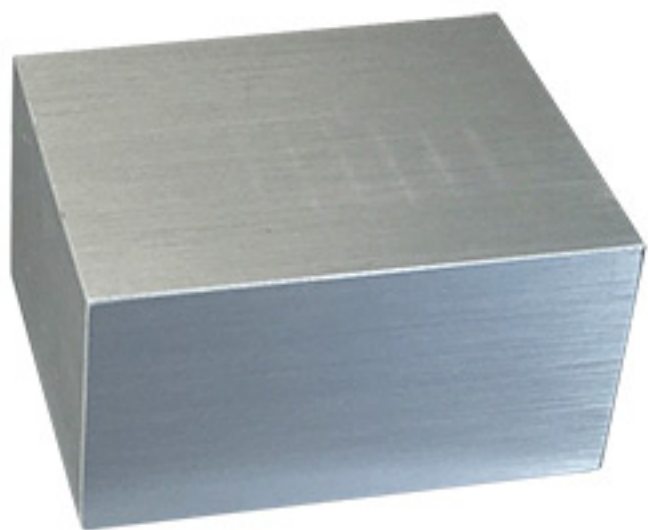


Catalog Number: BSWPCR1  
Capacity: 1 x 96 well PCR plate  
Block Dimensions: 4.25 x 3 x 2.6 inches  
Hole Dimensions: 4.9 x 14 mm



Catalog Number: BSWMT  
Capacity: 1 x Microplate  
Block Dimensions: 6 x 3.75 x 1 inches

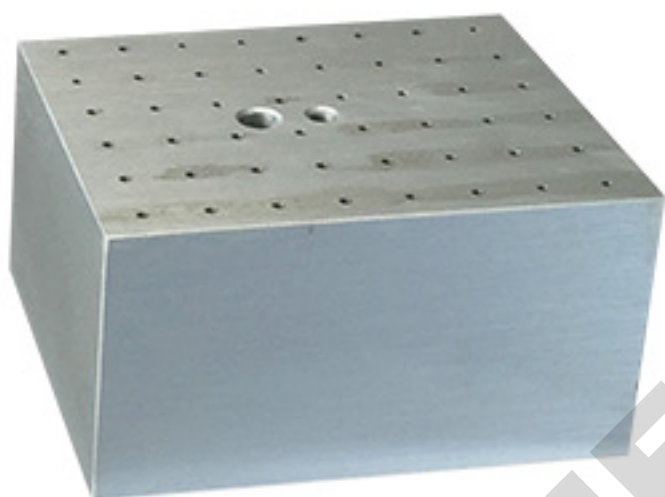




Catalog Number: BSW01  
Capacity: Slides or Custom Machining  
Block Dimensions: 3.75 x 3 x 2 inches



Catalog Number: BSWNMR  
Capacity: 30 x NMR tubes  
Block Dimensions: 3.75 x 3 x 3.25 inches  
Hole Dimensions: 5.3 x 76.3 mm



Catalog Number: BSWHEM  
Capacity: 48 x Hematocrit tubes  
Block Dimensions: 3.75 x 3 x 2 inches  
Hole Dimensions: 1.8 x 50 mm



Catalog Number: BSW5MT  
Capacity: 12 x 5.0 ml snap centrifuge tubes  
Block Dimensions: 3.75 x 3 x 2 inches  
Hole Dimensions: 16.8 x 49 mm

Benchmark Scientific's innovative Quick-Flip multi-purpose blocks allows for the incubation of:

**Side A**  
24 x 1.5/ 2.0 ml tubes  
14 x 0.5 ml tubes

**Side B**  
48 x 0.2 ml tubes  
6 PCR strips  
1 PCR Plate (Dual block only)



**Quick-Flip™**

Catalog Number: BSWCMB

Double your capacity with myBlock Digital Dry Bath II from Benchmark!

Please contact your local Benchmark Scientific Distributor for details.