

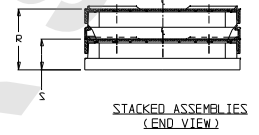
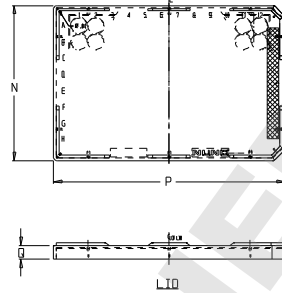
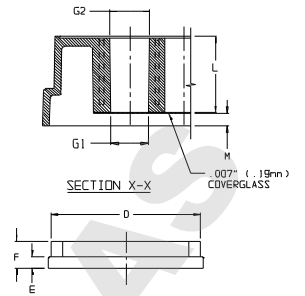
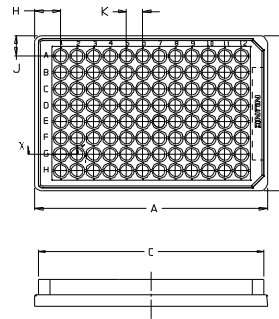
CATALOG NUMBER.....	SEE BELOW	
NOM. CAP. (uL).....	400	
MATERIAL.....	PS	
	INCH	MM
A (BASE LENGTH).....	5.030	127.76
B (BASE WIDTH).....	3.365	85.47
C (TOP LENGTH).....	4.87	123.3
D (TOP WIDTH).....	3.20	81.8
E (FLANGE HEIGHT).....	0.25	6.2
F (OVERALL HEIGHT).....	0.59	14.9
G1 DIA. (BOTTOM OF WELL).....	.249	6.32
G2 DIA. (TOP OF WELL).....	.254	6.45
H (A-1 LOCATION) (X).....	0.57	14.4
J (A-1 LOCATION) (Y).....	0.44	11.2
K (WELL-TO-WELL SPACING).....	0.35	9.0
L (WELL DEPTH).....	0.48	12.2
M (BOTTOM OF GLASS).....	.09	2.3
*N (LID LENGTH).....	5.02	127.4
*P (LID WIDTH).....	3.36	85.3
*Q (LID HEIGHT).....	.36	9.0
*R (STACKED HEIGHT W/LIDS).....	1.31	33.3
*S (ASSEMBLY HEIGHT W/LID).....	.65	16.6

CATALOG NUMBER	SURFACE	COLOR	STERILE	WITH LID*	UNITS PER PACK/CASE
164588	CELL CULTURE	BLACK	YES	YES	6/30
164590	CELL CULTURE	WHITE	YES	YES	6/30
160376	CC*	BLACK	YES	YES	6/30
160377	CC*	WHITE	YES	YES	6/30
265300	NON-TREATED	BLACK	NO	NO	5/30

*DIM'S APPLY ONLY WHERE "WITH LID" = YES. USING NUNC LID #9326B

NOTES:

1. ALL DIMENSIONS ARE NOMINAL AND IN INCHES AND MILLIMETERS UNLESS OTHERWISE NOTED.
2. THIS IS NOT A PRODUCTION DRAWING, BUT IS FOR INFORMATIONAL PURPOSES ONLY, AND IS SUBJECT TO CHANGE WITHOUT NOTICE.



SPECS ON BACK

NOT TO SCALE

CONFIDENTIAL

THIS PRODUCT SPECIFICATION SHEET CONTAINS CONFIDENTIAL AND/OR PROPRIETARY INFORMATION AND IS TO BE USED ONLY FOR THE EXPRESSED PURPOSES AGREED UPON BY AN AUTHORIZED OFFICER OF THERMO FISHER SCIENTIFIC.

ThermoFisher
SCIENTIFIC

Thermo Fisher Scientific
75 Panorama Creek Drive
Rochester, NY 14625-2385, USA

DATE	JDD	APP'D	PVC		REV.
DATE	KDW	DATE	6/8/06	PSS 1645XX	0506

DESCRIPTION: 96 WELL, PS, GLASS BOTTOM PLATE