

CATALOG NUMBER	SEE BELOW	
NOM. CAP. (uL)	400	
MATERIAL	PS	
	INCH	
	MM	
A (BASE LENGTH)	5.030	127.76
B (BASE WIDTH)	3.365	85.47
C (TOP LENGTH)	4.87	123.3
D (TOP WIDTH)	3.20	81.8
E (FLANGE HEIGHT)	0.25	6.2
F (OVERALL HEIGHT)	0.59	14.9
G1 DIA. (BOTTOM OF WELL)	.249	6.32
G2 DIA. (TOP OF WELL)	.254	6.45
H (A-1 LOCATION) (X)	0.57	14.4
J (A-1 LOCATION) (Y)	0.44	11.2
K (WELL-TO-WELL SPACING)	0.35	9.0
L (WELL DEPTH)	0.48	12.2
M (BOTTOM OF GLASS)	.09	2.3
*N (LID LENGTH)	5.02	127.4
*P (LID WIDTH)	3.36	85.3
*Q (LID HEIGHT)	.36	9.0
*R (STACKED HEIGHT W/LIDS)	1.31	33.3
*S (ASSEMBLY HEIGHT W/LID)	.65	16.6

CATALOG NUMBER	SURFACE	COLOR	STERILE	WITH LID*	UNITS PER PACK/CASE
164588	CELL CULTURE	BLACK	YES	YES	6/30
164590	CELL CULTURE	WHITE	YES	YES	6/30
160376	CC*	BLACK	YES	YES	6/30
160377	CC*	WHITE	YES	YES	6/30
265300	NON-TREATED	BLACK	NO	NO	5/30

\*DIM'S APPLY ONLY WHERE "WITH LID" = YES, USING NUMC LID #93268

NOTES:

1. ALL DIMENSIONS ARE NOMINAL AND IN INCHES AND MILLIMETERS UNLESS OTHERWISE NOTED.
2. THIS IS NOT A PRODUCTION DRAWING, BUT IS FOR INFORMATIONAL PURPOSES ONLY, AND IS SUBJECT TO CHANGE WITHOUT NOTICE.

CONFIDENTIAL

THIS PRODUCT SPECIFICATION SHEET CONTAINS CONFIDENTIAL AND/OR PROPRIETARY INFORMATION AND IS TO BE USED ONLY FOR THE EXPRESSED PURPOSES AGREED UPON BY AN AUTHORIZED OFFICER OF THERMO FISHER SCIENTIFIC.

**ThermoFisher**  
**SCIENTIFIC**

Thermo Fisher Scientific  
75 Pancosmo Creek Drive  
Rochester, NY 14625-2385, USA

DATE: JDD  
CHK'D: KDW  
APP'D: PVC  
6/8/06

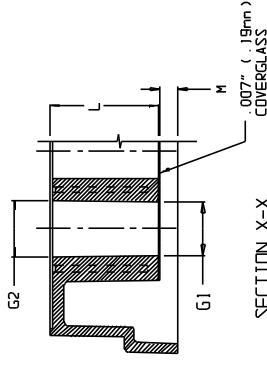
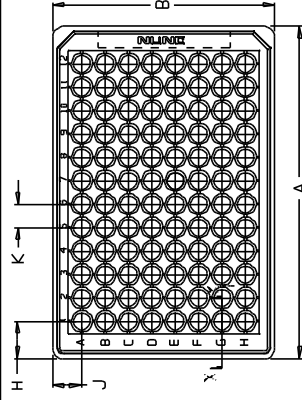
REV: 0506

PSS 1645XX

96 WELL, PS, GLASS BOTTOM PLATE

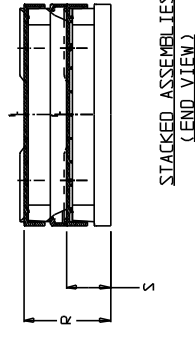
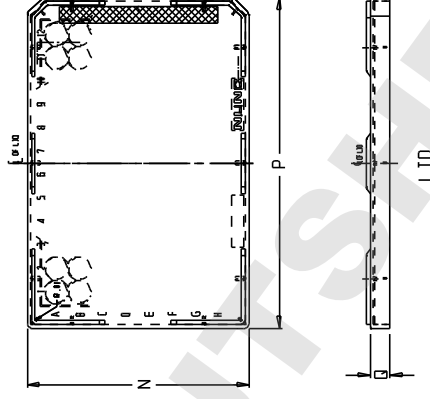
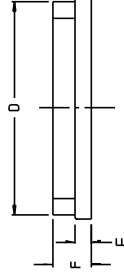
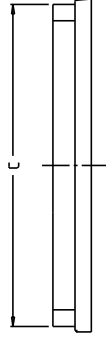
SPECS ON BACK

NOT TO SCALE



SECTION X-X

0.007" (0.18mm)  
COVERGLASS



STACKED ASSEMBLIES  
(END VIEW)

LID