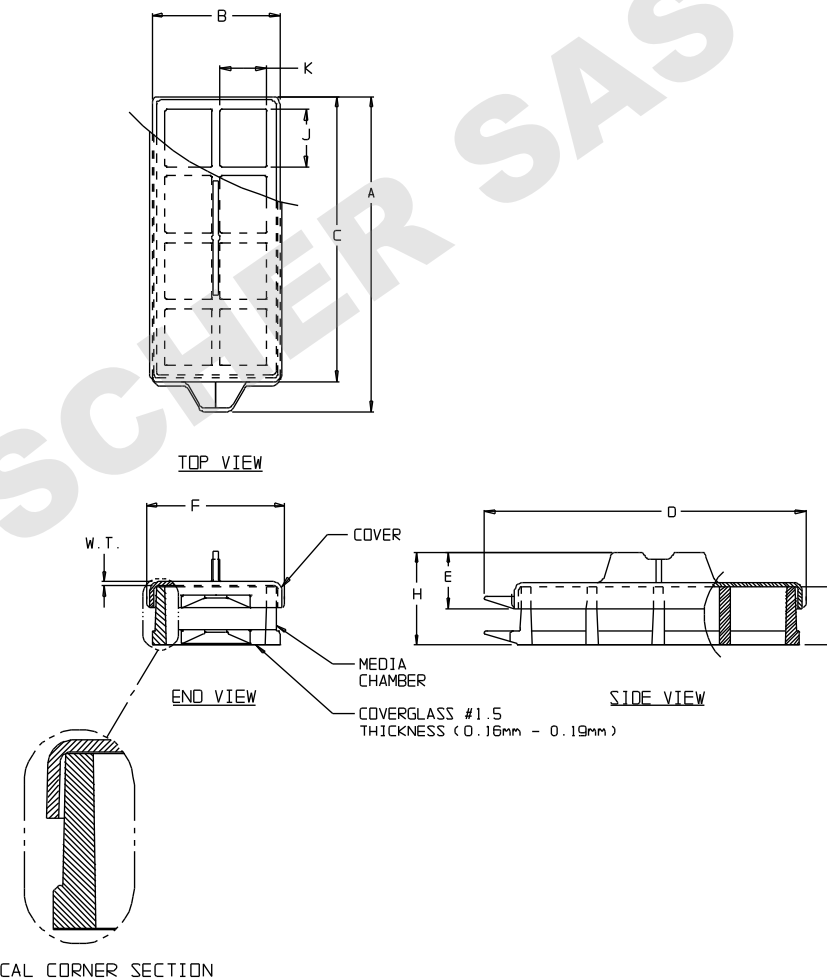


CATALOG NO. :		155409	
NUMBER OF WELLS. :		8	
SUGGESTED WORKING VOLUME (nL):		0.2 - 0.5	
CULTURE AREA WELL/cm ² :		0.9	
MATERIAL	MEDIA CHAMBER..... :	POLYSTYRENE	
	COVER..... :	POLYSTYRENE	
	BOTTOM..... :	COVERGLASS	
		INCH	MM
A (MEDIA CHAMBER LENGTH)..... :		2.39	60.7
B (MEDIA CHAMBER WIDTH)..... :		0.97	24.6
C (COVER LENGTH)..... :		2.19	55.6
D (COVER OVERALL LENGTH)..... :		2.36	59.9
E (COVER HEIGHT)..... :		0.44	11.2
F (COVER WIDTH)..... :		1.00	25.4
H (OVERALL HEIGHT)..... :		0.74	18.8
J (CHAMBER LENGTH - TOP)..... :		0.43	10.9
K (CHAMBER WIDTH - TOP)..... :		0.35	8.9
L (CHAMBER HEIGHT)..... :		0.45	11.4
W.T. (COVER TYPICAL WALL THICKNESS)..... :		0.03	0.8

NOTES:

1. ALL DIMENSIONS ARE NOMINAL AND IN INCHES AND MILLIMETERS UNLESS OTHERWISE NOTED.
2. THIS IS NOT A PRODUCTION DRAWING, BUT IS FOR INFORMATIONAL PURPOSES ONLY, AND IS SUBJECT TO CHANGE WITHOUT NOTICE.



SPECS ON BACK

NOT TO SCALE

CONFIDENTIAL

THIS PRODUCT SPECIFICATION SHEET CONTAINS CONFIDENTIAL AND/OR PROPRIETARY INFORMATION AND IS TO BE USED ONLY FOR THE EXPRESSED PURPOSES AGREED UPON BY AN AUTHORIZED OFFICER OF THERMO FISHER SCIENTIFIC.

ThermoFisher
SCIENTIFIC

Thermo Fisher Scientific
75 Ponorona Creek Drive
Rochester, NY 14625-2385, USA

MADE	JDD	APP'D	PVC	REV.	0706
CK'D	KOW		7/25/06		

PSS 155409

DESCRIPTION:
Lab-Tek II CHAMBERED COVERGLASS, 8-WELL