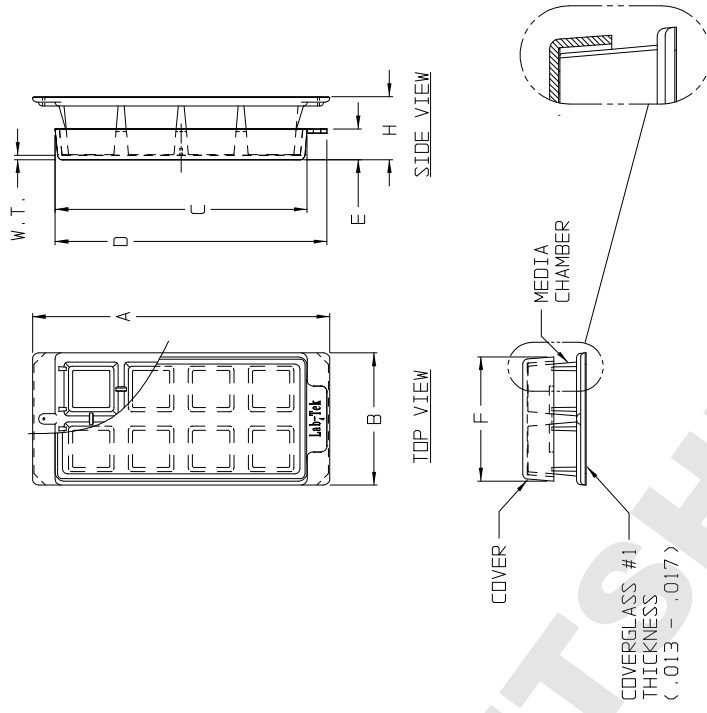


CATALOG NO.	155411	
NUMBER OF WELLS	8	
SUGGESTED WORKING VOLUME (mL):	0.2 - 0.4	
CULTURE AREA WELL/cm ²	0.8	
MEDIA CHAMBER	POLYSTYRENE	
COVER	POLYSTYRENE	
BOTTOM	COVERGLASS	
	INCH	
	MM	
A (MEDIA CHAMBER LENGTH)	2.25	57.8
B (MEDIA CHAMBER WIDTH)	1.00	25.4
C (COVER LENGTH)	1.91	48.5
D (COVER OVERALL LENGTH)	2.06	52.3
E (COVER HEIGHT)	0.23	5.8
F (COVER WIDTH)	0.94	23.9
H (OVERALL HEIGHT)	0.51	13.0
W.T. (COVER TYPICAL WALL THICKNESS)	0.03	0.8

NOTES:

1. ALL DIMENSIONS ARE NOMINAL AND IN INCHES AND MILLIMETERS UNLESS OTHERWISE NOTED.
2. THIS IS NOT A PRODUCTION DRAWING. BUT IS FOR INFORMATIONAL PURPOSES ONLY, AND IS SUBJECT TO CHANGE WITHOUT NOTICE.



SPECS ON BACK

NOT TO SCALE

ThermoFisher
SCIENTIFIC

Thermo Fisher Scientific
75 Pancorano Creek Drive
Rochester, NY 14625-2385, USA

NAME	PB	APP'D	GRP	PSS	155411	REV.	1212
CR'D	KDW	12/4/12					

DESCRIPTION:

Lab-Tek CHAMBERED COVERGLASS - 8 WELL

CONFIDENTIAL

THIS PRODUCT SPECIFICATION SHEET CONTAINS CONFIDENTIAL AND/OR PROPRIETARY INFORMATION AND IS TO BE USED ONLY FOR THE EXPRESSED PURPOSES AGREED UPON BY AN AUTHORIZED OFFICER OF THERMO FISHER SCIENTIFIC.