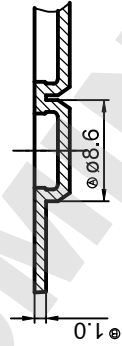
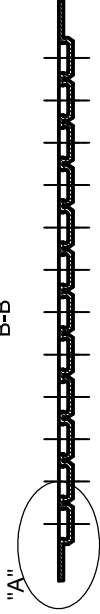


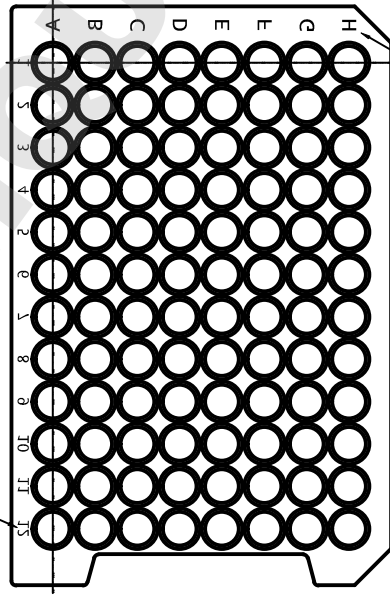
Detail
"A"
Scale
5:1



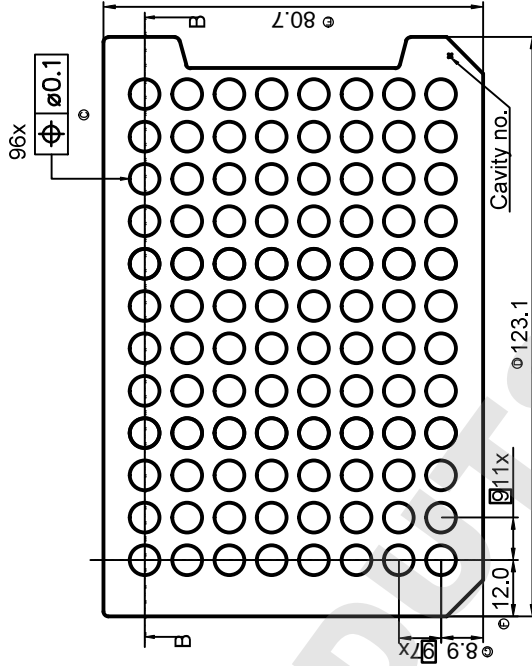
Snit
B-B



Text style : Helvetica Bold



Text style : Helvetica Bold



Tolerances unless otherwise specified:
Without decimal: ±0.5 mm
1 place decimal: ±0.1 mm
2 place decimal: ±0.05 mm

www.nuncbrand.com

Roskilde Site - Kamstrupvej 90 - P.O.Box 280
DK-4000 Roskilde - Denmark
Tel +45 4631 2000 - Fax +45 4631 2042
E-mail: info.nunc@thermofisher.com

| | | | | | | |
|-----------------------------------|------------------|--------------------------------|------------------------------|-------------------------|------------------------------|----------------------|
| SUBJECT: Well Cap Plate | | DRAWN BY/DATE: TBS/03.12.99 | CHANGE ORDER NO.: CO-1181 | VALID FROM: 20/08/21 | APPROVED BY/DATE: ROS/KGA | FORMAT: A3 |
| ITEM NUMBER: . | MATERIAL: TPE | DRAWING NO.: 2992 | VERSION: 10 | PAGE TYPE: -C | SCALE: 1:2.5 | METRIC CONVERSION |