

PureProteome™ Protein A and Protein G Magnetic Beads

Eliminate Variability. Maximize Recovery.



PureProteome Protein A and Protein G magnetic beads are a powerful system to isolate antibodies faster, easier, and with more reproducibility than ever before. PureProteome Protein A and Protein G magnetic beads purify your sample with the highest binding capacity of any magnetic beads available. You can achieve reproducible results in both immunoprecipitation and serum depletion assays.

Advantages

- High capacity: More than 6x the binding capacity of competitive magnetic beads.
 - Bind 1.5-3.5 μg of rabbit IgG per μL of suspension
- Consistent results: Total removal of buffers with no sample loss
- Fast processing time: Bead immobilization occurs in seconds
- Ideal for immunoprecipitation and serum depletion assays
- Economical: Up to half the price of competitive magnetic beads

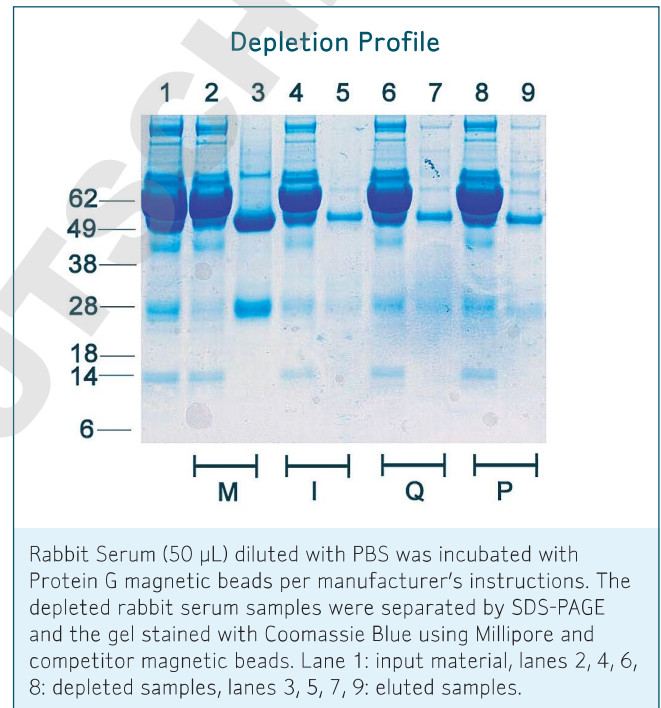
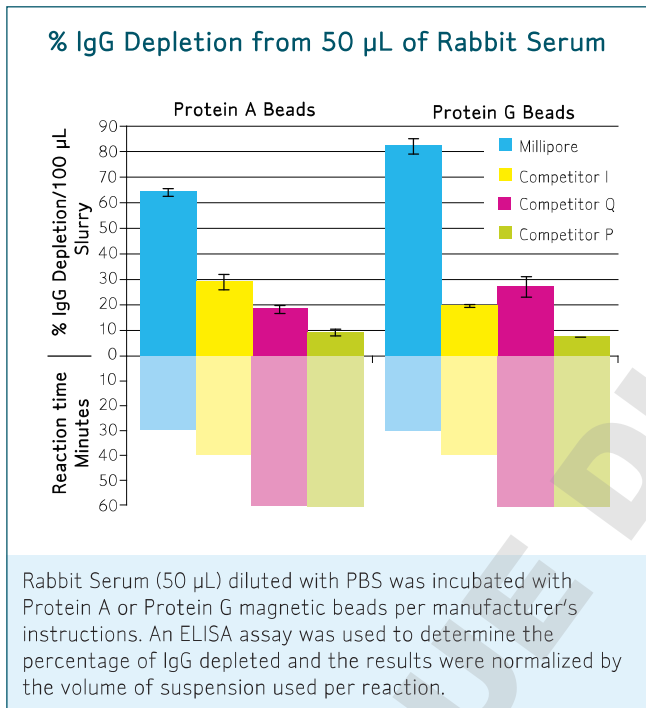
Superior magnetic bead performance from the experts in porous media

HIGH BINDING CAPACITY WITH RAPID SAMPLE PROCESSING

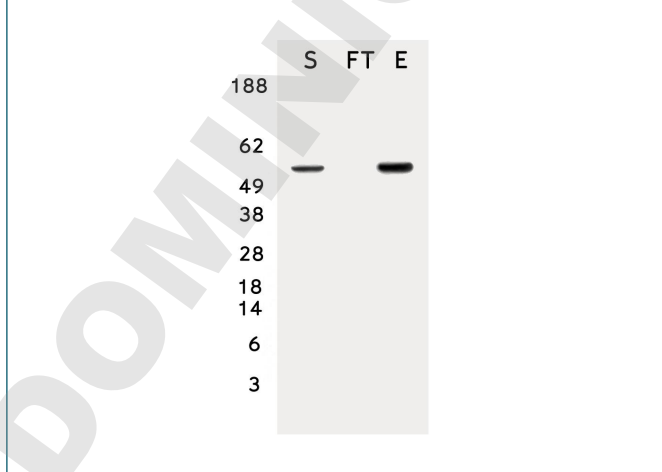
Trust Millipore to develop a superior magnetic bead system optimized to advance your research. Millipore's process for paramagnetizing porous silica particles enables us to provide magnetic beads with the highest binding capacity when compared to other magnetic purification systems.

With a binding capacity 6x greater than competitive beads, PureProteome Protein A and Protein G magnetic beads provide the greatest percentage of immunoglobulin (IgG) depletion from serum samples with low non-specific binding.

Get up to 8X greater depletion in half the time.



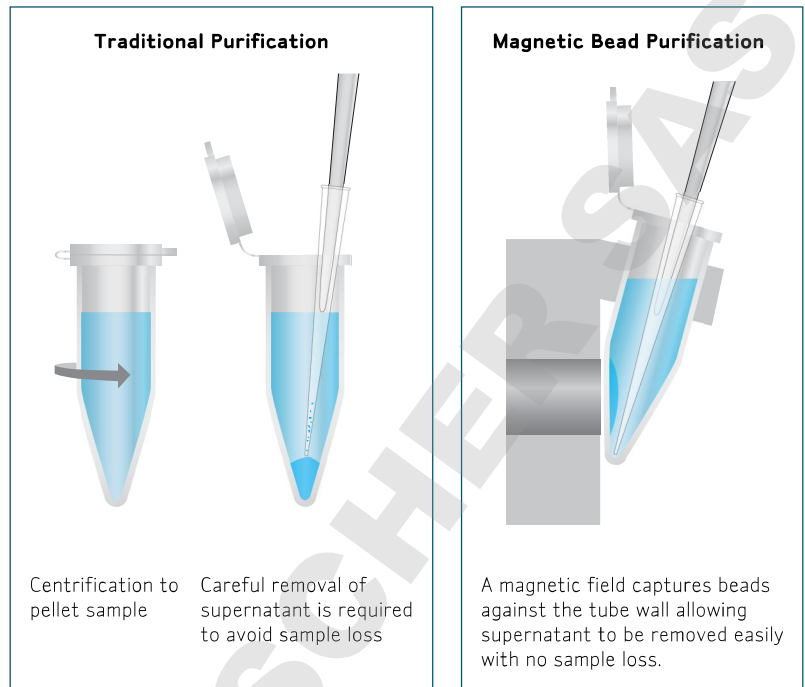
Use of the Indirect Immunoprecipitation Protocol to Isolate p53 Protein from A431 Cell Lysates



COMPLETE RECOVERY WITH REPRODUCIBLE RESULTS

Millipore's new PureProteome magnetic beads ensure the rapid and reproducible isolation of proteins. Unlike conventional methods that require centrifugation to pellet followed by careful aspiration to avoid sample loss, PureProteome magnetic beads are isolated using a magnetic rack. This allows for the total removal of buffers for complete recovery of beads with no sample dilution.

Eliminate variability while maximizing recovery.



FAST AND EASY

While traditional methods require minutes of harsh centrifugation to isolate your sample, the PureProteome magnetic bead system isolates proteins in seconds using a magnetic rack right on your bench. A magnetic field gently immobilizes the highly-visible beads on the side of the tube. This allows quick and easy aspiration and eliminates the need for a centrifugation step. With the increased reaction kinetics of the Pure Proteome magnetic beads, incubations can be performed in minutes.

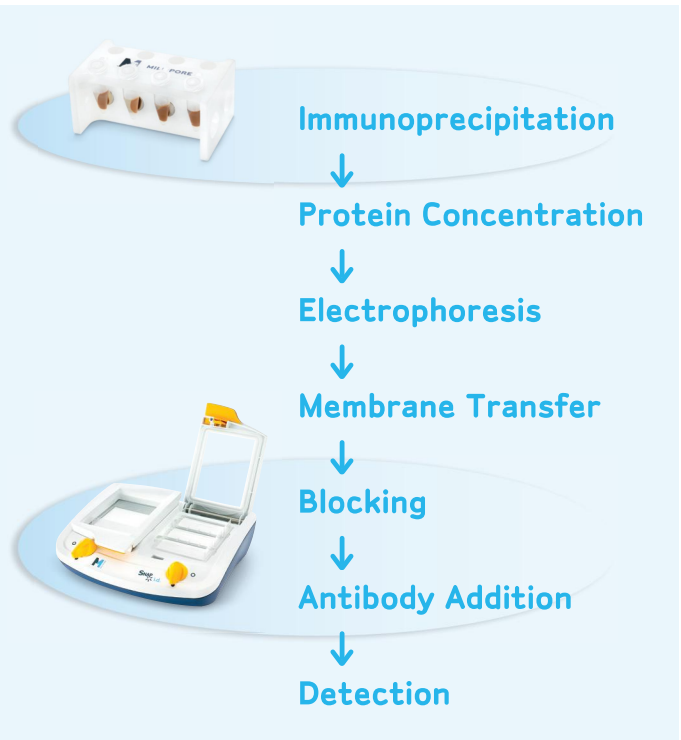
Immunoprecipitation reactions that may require up to 18 hours of incubation with beads using conventional methods can now be accomplished in as little as 10 minutes.

Dramatically reduce your sample preparation time with PureProteome magnetic beads.

RAPID DOWNSTREAM PROCESSING

To further speed up your immunodetection protocol, detect your immunoprecipitated proteins with the SNAP i.d. Protein Detection System. Unlike conventional western blotting, where diffusion is the primary means of reagent transport, this system applies a vacuum to actively drive reagents through the membrane.

Use PureProteome magnetic beads with the SNAP i.d. System to isolate and detect proteins in record time.



ORDERING INFORMATION

| Description | Qty/Pk | Catalogue No. |
|---------------------------------------|-------------------|------------------------|
| PureProteome Magnetic Beads | | |
| PureProteome Protein A Magnetic Beads | 10 mL 2 x 1 mL | LSKMAGA10 LSKMAGA02 |
| PureProteome Protein G Magnetic Beads | 10 mL 2 x 1 mL | LSKMAGG10 LSKMAGG02 |
| Pure Proteome Nickel Magnetic Beads | 10 mL 2 x 1 mL | LSKMAGH10 LSKMAGH02 |
| Magna GriP™ Rack | | 20-400 |

| Description | NMWL* | Qty/Pk | Catalogue no. |
|-------------------------------------------------------------------|-------|--------|---------------|
| Protein Concentration (<4 mL samples) | | | |
| Amicon® Ultra-4 Centrifugal Filter Unit with Ultracel®-3 membrane | 3 | 24 | UFC800324 |
| Amicon Ultra-4 Centrifugal Filter Unit with Ultracel-10 membrane | 10 | 24 | UFC801024 |
| Amicon Ultra-4 Centrifugal Filter Unit with Ultracel-30 membrane | 30 | 24 | UFC803024 |
| Amicon Ultra-4 Centrifugal Filter Unit with Ultracel-50 membrane | 50 | 24 | UFC805024 |
| Amicon Ultra-4 Centrifugal Filter Unit with Ultracel-100 membrane | 100 | 24 | UFC810024 |

* Nominal Molecular Weight Limit or membrane cut-off in kDa

| Description | Qty/Pk | Catalogue no. |
|-----------------------------------------------------------------------------------------|--------|---------------|
| Western Blotting | | |
| SNAP i.d.™ Protein Detection System | 1 kit | WBAVDDBASE |
| Includes hardware base, blot holder sample pack, blot roller, vacuum tubing user guide. | | |

| Description | Size | Qty/Pk | Catalogue no. |
|-------------------------------------------------|---------------|--------|---------------|
| Immobilon®-P Transfer membrane (0.45 µm) | | | |
| Cut Sheet | 8 x 10 cm | 10 | IPVH08100 |
| | 10 x 10 cm | 10 | IPVH10100 |
| | 20 x 20 cm | 10 | IPVH20200 |
| Roll | 26.5 x 375 cm | 1 | IPVH00010 |

| Description | Size | Qty/Pk | Catalogue no. |
|-------------------------------------------------|---------------|--------|---------------|
| Immobilon-PSQ Transfer membrane (0.2 µm) | | | |
| Cut Sheet | 8 x 10 cm | 10 | ISEQ08100 |
| | 10 x 10 cm | 10 | ISEQ10100 |
| | 20 x 20 cm | 10 | ISEQ20200 |
| Roll | 26.5 x 375 cm | 1 | ISEQ00010 |

| Description | Size | Qty/Pk | Catalogue no. |
|-------------------------------------------------|----------------|--------|---------------|
| Immobilon-FL Transfer membrane (0.45 µm) | | | |
| Cut Sheet | 10 x 10 cm | 10 | IPFL10100 |
| Roll | 26.5 x 3.75 cm | 1 | IPFL00010 |

| Blotting Sandwiches | | | |
|-------------------------------|-------------|----|-----------|
| Immobilon-P Blotting Sandwich | 7 x 8.4 cm | 20 | IPSN07852 |
| | 8.5 x 13 cm | 20 | IPSN08132 |

| Description | Qty/Pk | Catalogue no. |
|-----------------------------------------------------|--------|---------------|
| Western Blot Detection Substrates | | |
| Immobilon Western Chemiluminescent HRP Substrate | 100 mL | WBKLS0100 |
| Immobilon Western Chemiluminescent AP Substrate | 100 mL | WBKDS0100 |
| Spray & Glow™ ECL Western Blotting Detection System | 100 mL | 17-373 |

Visit www.millipore.com for additional pack sizes



www.millipore.com/offices

ADVANCING LIFE SCIENCE TOGETHER™
Research. Development. Production.

TO PLACE AN ORDER OR RECEIVE TECHNICAL ASSISTANCE

Visit: www.millipore.com/support

Millipore, Ultracel, Immobilon, and Amicon are registered trademarks of Millipore Corporation. The M mark, Advancing Life Science Together, PureProteome, Magna GriP, SNAP i.d., and Spray & Glow are trademarks of Millipore Corporation.
Lit. No. DS1060EN00 11/08 BP-GEN-08-01172
Printed in the U.S.A.
© 2008 Millipore Corporation, Billerica, MA 01821 U.S.A. All rights reserved.