

MILLIPORE

# Montage™ DNA Gel Extraction Kit

**Fast, one-step DNA purification from agarose gels**

- ▶ Complete kit maximizes DNA recovery from agarose gel slices
- ▶ One 10-minute spin recovers fully functional DNA
- ▶ Purified DNA is ready for cloning or sequencing
- ▶ Kit includes modified TAE buffer for gel casting and running

## One-step DNA Purification

The Montage DNA Gel Extraction Kit is a fast, effective solution for fully functional DNA recovery from agarose gel slices. In one 10-minute spin, the agarose gel material containing the DNA of interest is fragmented and compressed to extrude the DNA that is ready for sequencing or cloning.

## Maximum DNA Recovery

The Montage Gel Extraction kit contains all the consumables needed to maximize DNA recovery from agarose gel slices.

The centrifugal device in the kit is built with a unique Gel Nebulizer that maximizes the efficiency of DNA extraction. The Gel Nebulizer converts the agarose gel material into a spray from which the DNA is then readily separated (see Figure 1).

The kit protocol is optimized for use with standard agarose (< 1.25% concentration) and centrifugation at 5,000 x g. **Note:** The protocol is not compatible with low melting point agarose.

The Montage kit delivers consistent, reliable recoveries for DNA ranging in size from 100 bp – 10,000 bp.

## Convenient Kit Includes Modified TAE Buffer

The Montage kit includes a pre-mixed modified TAE buffer as a 500-ml stock of 50 x concentrate for use in gel casting and running.

The modified TAE buffer is specifically formulated to prohibit any interference with sequencing reactions or other downstream enzymatic reactions.

DATA SHEET

MILLIPORE

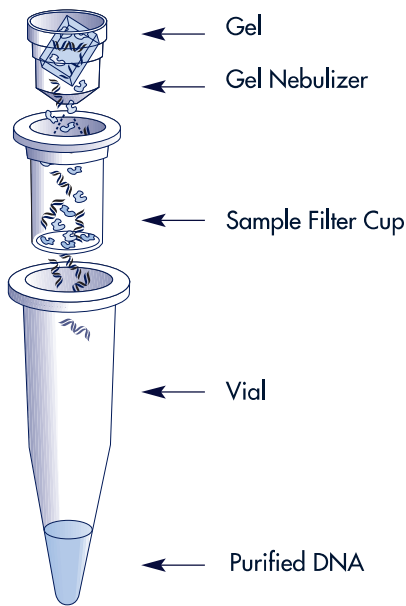
GENOMICS

## Quick and Easy Protocol

To recover fully functional DNA from an agarose gel, simply place the gel slice into the Gel Nebulizer and spin for 10 minutes at 5,000 x g.

Purified DNA is recovered in the filtrate vial and is ready for cloning or sequencing. It may also be stored in the capped filtrate vial for storage.

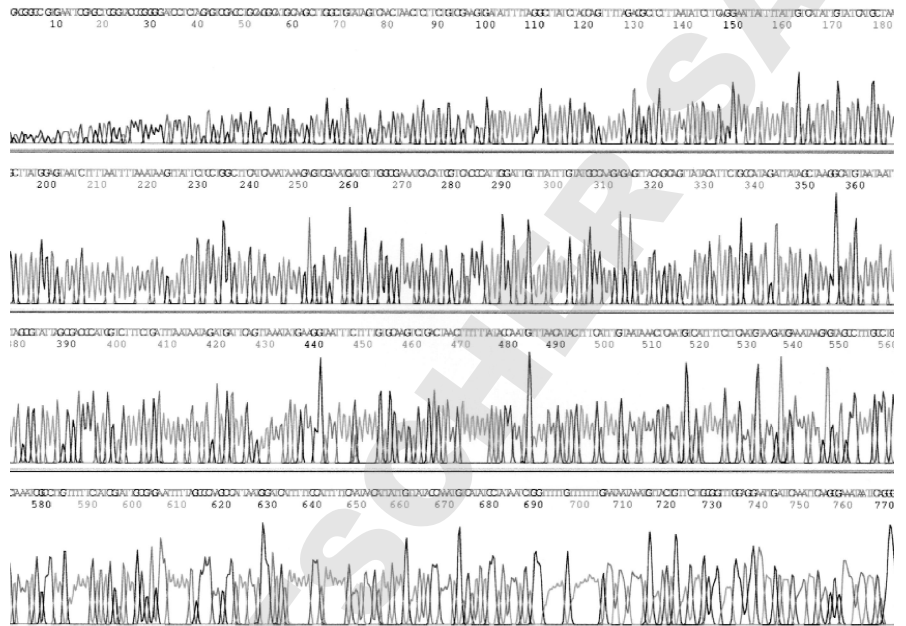
## Single-spin Operation



**Figure 1.** Exploded view of the Montage DNA Gel Extraction kit centrifugal device. Centrifugal force drives the agarose slice through a small orifice in the Gel Nebulizer. The resultant gel slurry is sprayed into the sample filter cup. As the spin compresses the agarose, DNA is extruded from the gel pores. The gel matrix is retained by the membrane, while purified DNA passes through into the collection vial.

## Performance

## Clean, high quality DNA for Sequencing



**Figure 2.** A 1-Kb PCR product was purified from a 1% agarose gel that was cast and run in modified TAE buffer. After purification from an agarose gel slice with the Montage DNA Gel Extraction kit, the PCR DNA fragment was sequenced with BigDye® version 3.0. Unincorporated dye terminators were removed by cleanup on a Montage SEQ<sub>96</sub> Sequencing Reaction Cleanup plate, and the reaction injected on an ABI 3700 capillary sequencer.

## Typical DNA Fragment Recoveries

DNA Size (bp)	Percent DNA Recovered
100	78
700	71
1000	77
2027	47
4361	35
9416	32
23130	29

**Table 1.** Typical DNA recoveries from agarose gels with the Montage DNA Gel Extraction Kit. DNA recoveries remain above 50% for fragments that are 2 Kb or smaller. For DNA larger than 2 Kb, recovery drops to about 30% because of the inefficient extrusion of larger DNA fragments.



### Ordering Information

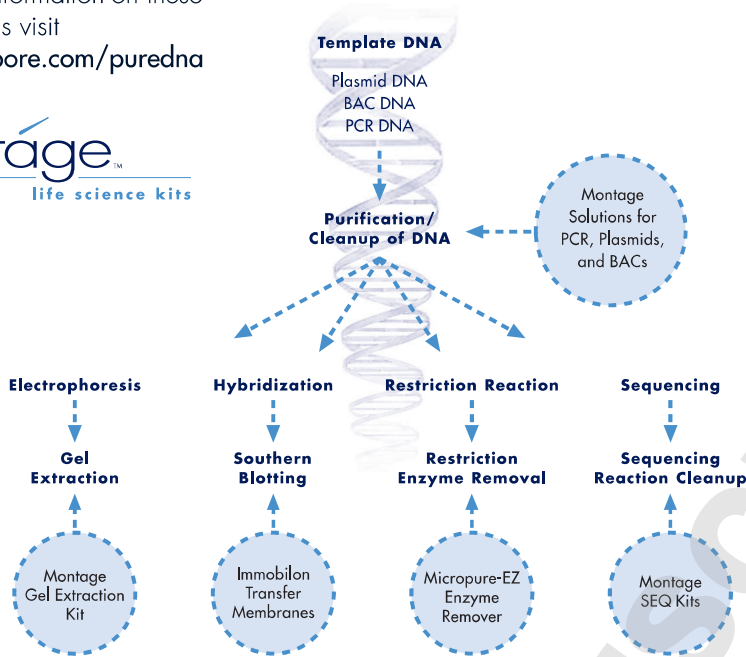
Kit includes 50 pre-assembled centrifugal units and 500 mL of 50x stock modified TAE buffer. A user guide is also provided.

Description	Qty/Pk	Catalogue No.
Montage DNA Gel Extraction Kit	50 devices/pk	LSK GEL 050
<b>Optional Accessories</b>		
50 x Modified TAE buffer	1 x 500 mL bottle	LSK MTAE50

## Millipore Sample Prep Solutions for Genomics

For more information on these applications visit  
[www.millipore.com/puredna](http://www.millipore.com/puredna)

**montage™**  
 life science kits



### To Place an Order or Receive Technical Assistance

For additional information call your nearest Millipore office:

In the U.S. and Canada, call toll-free **1-800-MILLIPORE (1-800-645-5476)**

In the U.S., Canada and Puerto Rico, fax orders to **1-800-MILLIFX (1-800-645-5439)**

Internet: [www.millipore.com](http://www.millipore.com)

Tech Service:

[www.millipore.com/techservice](http://www.millipore.com/techservice)

**pure e-commerce**

Now you can buy Millipore products online @

[www.millipore.com/purecommerce](http://www.millipore.com/purecommerce)

Millipore is a registered trademark of Millipore Corporation.

Montage is a trademark of Millipore Corporation.

ABI Prism and AmpliTaq are trademarks of PerkinElmer Corporation.

BigDye is a registered trademark of PerkinElmer Corporation.

Lit. No. PF1230EN00 6/02 02-111

Printed in U.S.A.

Copyright 2002 Millipore Corporation, Bedford, MA. All rights reserved.

### Millipore Worldwide

#### AUSTRALIA

Tel. 1 800 222 111  
 or (02) 9888 8999  
 Fax (02) 9878 0788

#### AUSTRIA

Tel. (01) 877 89 26  
 Fax (01) 877 16 54

#### BALTIC COUNTRIES

Tel. +358 9 804 5110  
 Fax +358 9 256 5660

#### BELGIUM AND LUXEMBOURG

Tel. +32 2 726 88 40  
 Fax +32 2 726 98 84

#### BRAZIL

Tel. (011) 5548-7011  
 Fax (011) 5548-7923

#### CANADA

Tel. 1-800-645-5476  
 Fax 1-800-645-5439

#### CHINA, PEOPLE'S REPUBLIC OF

Beijing:  
 Tel. (8610) 8519 1250  
 (8610) 6518 1058  
 Fax (8610) 8519 1255  
 Guangzhou:  
 Tel. (8620) 8755 4049  
 Fax (8620) 8752 0172  
 Hong Kong:  
 Tel. (852) 2803 9111  
 Fax (852) 2513 0313  
 Shanghai:  
 Tel. (8621) 5306 9100  
 Fax (8621) 5306 0838

#### CZECH REPUBLIC

Tel. 02-2051 3841  
 Fax 02-2051 4298

#### DENMARK

Tel. 70 10 00 23  
 Fax 70 10 13 14

#### EASTERN EUROPE, C.I.S., AFRICA, MIDDLE EAST AND GULF

Laboratory Water Division:  
 Tel. +33 3 88 38 9536  
 Fax +33 3 88 38 9539  
 BioPharmaceutical Division:  
 Tel. +43 1 877-8926  
 Fax +43 1 877-1654

Laboratory Water Division:  
 Tel. +33 1 30 12 7000  
 Fax +33 1 30 12 7180

#### FINLAND

Tel. (09) 804 5110  
 Fax (09) 256 5660

#### FRANCE

Tel. 01 30 12 7000  
 Fax 01 30 12 7180

#### GERMANY

Tel. (06196) 494-0  
 Fax (06196) 43901

#### HUNGARY

Tel. 01 381 0433  
 01 381 0434  
 01 209 3232  
 Fax 01 209 0295

#### INDIA

Tel. (91) 80-839 46 57  
 Fax (91) 80-839 63 45

#### IRELAND

Life Sciences and Laboratory Water Divisions:  
 Tel. +44 1923 816375  
 Fax +44 1923 818297  
 BioPharmaceutical Division:  
 Tel. (021) 883 666  
 Fax (021) 883 048

#### ITALY

Vimodrone (Milano):  
 Tel. (02) 25.07.81  
 Fax (02) 26.50.324  
 Roma:  
 Tel. (06) 52.03.600  
 Fax (06) 52.95.735

#### JAPAN

Tel. (03) 5442-9711  
 Fax (03) 5442-9736  
 Life Sciences  
 9737 BioPharm.  
 9734 Lab Water

#### KOREA

Tel. (822) 551-0990  
 Fax (822) 551-0228

#### MALAYSIA

Tel. 603-7957-1322  
 Fax 603-7957-1711

#### MEXICO

Tel. (525) 576-9688  
 Fax (525) 576-8706

#### THE NETHERLANDS

Tel. 076-5022000  
 Fax 076-5022436

#### NORWAY

Tel. 22 67 82 53  
 Fax 22 66 04 60

#### POLAND

Tel. 22-669 12 25  
 22-663 70 31  
 Fax 22-663 70 33

#### PUERTO RICO

BioPharmaceutical Division:  
 Tel. (787) 273-8495  
 Fax (787) 747-6553

#### SINGAPORE

Tel. (65) 842 1822  
 Fax (65) 842 4988

#### SPAIN AND PORTUGAL

Tel. +34 917 283 960  
 Fax +34 917 292 909

#### SWEDEN

Tel. 08-628 6960  
 Fax 08-628 6457

#### SWITZERLAND

Tel. (01) 908-30-60  
 Fax (01) 908-30-80

#### TAIWAN

Tel. 886-2-2792-9333  
 Fax 886-2-2792-6555

#### U.K.

Tel. 01923 816375  
 Fax 01923 818297

#### U.S.A.

Tel. (781) 533-6000  
 Fax (781) 533-3110

#### IN ALL OTHER COUNTRIES

Millipore Intertech (U.S.A.)  
 Tel. +1 (781) 533-8622  
 Fax +1 (781) 533-8630

**MILLIPORE**