

Multiscreen® Filter plates



1 nm 10 nm 100 nm 1 µm 10 µm 100 µm 1 mm 10 mm

Small Molecule Large Molecule Protein DNA Viruses Bacteria Yeast Animal Cells Diatoms Beads I issue Molds Multicellular Organisms

Colored boxes correspond to membrane options (chart at right)

Application	Plate Type(s)
Drug solubility studies	Multiscreen [®] PCR Filter Plates for Solvent Resistant Assays
	Multiscreen [®] Plate with Durapore® Membrane
Permeability studies/PAMPA assay	Multiscreen [®] High Volume Plate with Durapore® Membrane
	Multiscreen [®] High Volume Plate with Durapore® Membrane
	Multiscreen [®] High Volume Plate with Durapore® Membrane
	Multiscreen [®] High Volume Plate with Durapore® Membrane
	Multiscreen [®] High Volume Plate with Durapore® Membrane
	Multiscreen [®] High Volume Plate with Durapore® Membrane
	Multiscreen [®] High Volume Plate with Durapore® Membrane
	Multiscreen [®] High Volume Plate with Durapore® Membrane
	Multiscreen [®] High Volume Plate with Durapore® Membrane
	Multiscreen [®] High Volume Plate with Durapore® Membrane
Cell-based drug permeability studies	Multiscreen [®] Well Cell Culture Insert Plate, PET Membrane
	Multiscreen [®] Well Cell Culture Insert Plate, PET Membrane
Total drug analysis	Multiscreen [®] High Volume Plate with Durapore® Membrane
	Multiscreen [®] High Volume Plate with Durapore® Membrane
Clarification of cellular debris or particulates	Multiscreen [®] High Volume Plate with Durapore® Membrane
	Multiscreen [®] High Volume Plate with Durapore® Membrane
Dye terminator removal	Multiscreen [®] High Volume Plate with Durapore® Membrane
	Multiscreen [®] High Volume Plate with Durapore® Membrane
PCR cleanup	Multiscreen [®] High Volume Plate with Durapore® Membrane
	Multiscreen [®] High Volume Plate with Durapore® Membrane
Lysate cleaning	Multiscreen [®] High Volume Plate with Durapore® Membrane
	Multiscreen [®] High Volume Plate with Durapore® Membrane
DNA-binding proteins	Multiscreen [®] High Volume Plate with Durapore® Membrane
	Multiscreen [®] High Volume Plate with Durapore® Membrane
Protein binding	Multiscreen [®] High Volume Plate with Durapore® Membrane
	Multiscreen [®] High Volume Plate with Durapore® Membrane
Cloned receptor-binding studies	Multiscreen [®] High Volume Plate with Durapore® Membrane
	Multiscreen [®] High Volume Plate with Durapore® Membrane
ELISA	Multiscreen [®] High Volume Plate with Durapore® Membrane
	Multiscreen [®] High Volume Plate with Durapore® Membrane
Hemorrhagic toxin assays	Multiscreen [®] High Volume Plate with Durapore® Membrane
	Multiscreen [®] High Volume Plate with Durapore® Membrane
Enzyme assays (kinases, phosphatases, etc.)	Multiscreen [®] High Volume Plate with Durapore® Membrane
	Multiscreen [®] High Volume Plate with Durapore® Membrane
Bacteria	Multiscreen [®] High Volume Plate with Durapore® Membrane
	Multiscreen [®] High Volume Plate with Durapore® Membrane
Cell (reagent)/receptor binding assays (recombinant)	Multiscreen [®] High Volume Plate with Durapore® Membrane
	Multiscreen [®] High Volume Plate with Durapore® Membrane
Calcium uptake measurements	Multiscreen [®] High Volume Plate with Durapore® Membrane
	Multiscreen [®] High Volume Plate with Durapore® Membrane
Studies using cell monolayers (Caco-2, MDCK)	Multiscreen [®] High Volume Plate with Durapore® Membrane
	Multiscreen [®] High Volume Plate with Durapore® Membrane
ELISPOT assays to assess immune response	Multiscreen [®] High Volume Plate with Durapore® Membrane
	Multiscreen [®] High Volume Plate with Durapore® Membrane
Migration, invasion, chemotaxis	Multiscreen [®] High Volume Plate with Durapore® Membrane
	Multiscreen [®] High Volume Plate with Durapore® Membrane
Cellular processes and protein receptor binding assays (radiometric)	Multiscreen [®] High Volume Plate with Durapore® Membrane
	Multiscreen [®] High Volume Plate with Durapore® Membrane
Viral infection studies	Multiscreen [®] High Volume Plate with Durapore® Membrane
	Multiscreen [®] High Volume Plate with Durapore® Membrane
Chromatography - affinity capture, permeation or ion exchange (resins)	Multiscreen [®] High Volume Plate with Durapore® Membrane
	Multiscreen [®] High Volume Plate with Durapore® Membrane
Environmental samples	Multiscreen [®] High Volume Plate with Durapore® Membrane
	Multiscreen [®] High Volume Plate with Durapore® Membrane
Whole tissue adometric receptor binding assays	Multiscreen [®] High Volume Plate with Durapore® Membrane
	Multiscreen [®] High Volume Plate with Durapore® Membrane
Neurotransmitter release from brain tissue	Multiscreen [®] High Volume Plate with Durapore® Membrane
	Multiscreen [®] High Volume Plate with Durapore® Membrane
Whole organism cytotoxicity, paralysis, and motility	Multiscreen [®] High Volume Plate with Durapore® Membrane
	Multiscreen [®] High Volume Plate with Durapore® Membrane
Luminescent bead-based assays	Multiscreen [®] High Volume Plate with Durapore® Membrane
	Multiscreen [®] High Volume Plate with Durapore® Membrane

Type	Description	Product	Pore Size (µm)	Plate Color/Material	No. of Samples	Sample Volume (mL)	Stability	Cat. No. *	Cy/Plk Options	
PVPF Membrane	Plates with Hydrophilic Durapore® PVDF Membrane	Multiscreen [®] ₉₆ GV	0.22	Clear Acrylic	96	0.3	○	MEGVN22	10 80	
			96	0.3	●	MEGV22	10 80			
		Multiscreen [®] ₉₆ HV	0.45	Opaque Bare®	96	0.3	○	MEGVN28	80	
			96	0.3	●	MEHV48	10 80			
		Multiscreen [®] ₉₆ DV	0.65	Clear Styrene	96	0.3	○	MEGVN55	10 80	
			96	0.3	●	MEVD58	80			
	Multiscreen [®] ₉₆ BV	1.2	Clear Styrene	96	0.3	○	MEGVN12	10 80		
		96	0.3	●	MEBV52	10 80				
	Multiscreen [®] High Volume HV	0.45	Opaque Polypropylene	96	2.0	○	MEHV48	25		
		96	2.0	●	MEHV45	25				
	MCE	Plates with Immobilon® P Membrane (Hydrophobic PVDF)	Multiscreen [®] ₉₆ IP	0.45	Clear Acrylic	96	0.3	○	MEIPN48	10 80
				96	0.3	●	MEIPN48	10 80		
White Acrylic			96	0.3	●	MEIPN4W	10 80			
Multiscreen [®] IP w/o Underlaid		0.45	Clear Acrylic	96	0.3	○	MEIPN48	10 80		
		96	0.3	●	MEIPN48	10 80				
Multiscreen [®] IP w/o Underlaid		0.45	White Acrylic	96	0.3	○	MEIPN48	10 80		
	96	0.3	●	MEIPN48	10 80					
PTFE	Solvent-Resistant Filter Plates	Hydrophilic Multiscreen [®] Solvint™	0.45	Clear Polyolefin Copolymer	96	0.3	○	MEFPN04	10 80	
			96	0.3	●	MEFPN04	10 80			
		Hydrophobic Multiscreen [®] Solvint™	0.45	Clear Polyolefin Copolymer	96	2.0	○	MDRLN04	10	
			96	2.0	●	MDRLN04	10			
		Hydrophobic Multiscreen [®] Solvint™	0.45 with pre-filter	Clear Polyolefin copolymer & Acrylic Clefin Copolymer	96	2.0	○	MDRFPN4	10	
			96	2.0	●	MDRFPN4	10			
	Hydrophobic Multiscreen [®] Solvint™	0.45 with pre-filter	Clear Polyolefin copolymer & Acrylic Clefin Copolymer	96	2.0	○	MDRFPN4	10		
		96	2.0	●	MDRFPN4	10				
	Nylon	Plates with Nylon Mesh	Multiscreen [®] MESH	20.0	Clear Styrene	96	0.3	○	MANMN20	10
				40.0	Clear Styrene	96	0.3	○	MANMN40	10
				60.0	Clear Styrene	96	0.3	○	MANMN60	10
	Polycarbonate Membrane	Plates for Migration/Invasion & Chemotaxis	Multiscreen [®] MIC & Chemotaxis	3.0	Clear Styrene	96	0.3	○	MANMCS3	10
5.0				Clear Styrene	96	0.3	○	MANMCS5	10	
8.0				Clear Styrene	96	0.3	○	MANMCS8	10	
10.0				Clear Styrene	96	0.3	○	MANMCS10	10	
0.4				Clear Styrene	96	0.3	○	FSDT004	1 5	
0.5				Clear Styrene	96	0.3	○	MFC407K	10	
Specialty Membranes	Plates for non cell-based absorption assay system	Multiscreen [®] Pervia	0.4	Clear Styrene	96	0.3	○	MSELFC	10 80	
			96	0.3	○	MSELFC	10 80			
	Plates for cell attachment, growth & differentiation	Multiscreen [®] Cell Attachment	1.0	Clear Styrene	96	0.3	○	FSLP004	1 5	
			96	0.3	○	FSLP004	1 5			
	Harvest plates	Plates with glass fiber filters	Multiscreen [®] ₉₆ FB	FB w/0.5	Opaque Bare®	96	0.3	○	MEFBN8	10 80
				96	0.3	○	MEFBN8	10 80		
				96	0.3	○	MEFBN8	10 80		
			Multiscreen [®] ₉₆ FC	FC w/0.5	Opaque Bare®	96	0.3	○	MEFCN8	10 80
				96	0.3	○	MEFCN8	10 80		
				96	0.3	○	MEFCN8	10 80		
		Multiscreen [®] ₉₆ FC	FC	White SAN	384	0.1	○	MEFCN384	80	
			96	0.3	○	MEFCN384	80			
Multiscreen [®] High Volume FC		1.20	White SAN	384	0.1	○	MHFCN12	25		
		96	2.0	○	MHFCN12	25				
Multiscreen [®] ₉₆ FB	FB (1.0)	Opaque Bare®	96	0.3	○	MEFBN850	80			
	96	0.3	○	MEFBN850	80					
Multiscreen [®] Harvest Plates	FB (1.0)	Opaque SAN	96	0.3	○	MAHFLH	60			
	96	0.3	○	MAHFLH	60					
Multiscreen [®] Harvest Plates	FC (1.2)	Opaque SAN	96	0.3	○	MAHFLH	60			
	96	0.3	○	MAHFLH	60					
Plates for PCR Cleanup	Multiscreen [®] PCR96	PCR96	—	Clear (Purple) Styrene	96	0.1	—	LSKMP96	10 80	
			96	0.1	—	LSKMP96	10 80			
Plates for SBEQ Cleanup	Multiscreen [®] SBEQ96	SBEQ96	—	Clear Styrene	96	0.1	—	S384SEQ	10 80	
			96	0.1	—	S384SEQ	10 80			
Montage Filter Plates for Plasmid Miniprep	Montage Filter Plate	Miniprep Kit	—	Clear (Blue) Styrene	96	—	—	LSKFP96	04 24	
			96	—	—	LSKFP96	04 24			

*The harvest quantity code must be added to the catalog number listed here to complete the order number. Example: MS052250 or MS052250-250
 ● Sterile ○ Non-sterile ○ Optically transparent

Multiply your success with the MultiScreen[®] HTS Vacuum Manifold

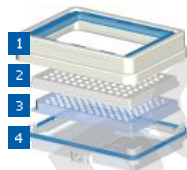


Plate-on-plate stacking eliminates gaps between flow directors and receiver wells in applications that require filtrate collection.

1. Manifold Collar
2. MultiScreen Filter Plate
3. Collection Plate
4. Manifold Base

www.MerckMillipore.com/manifold

Need automation?

Multiscreen[®] Plates feature:

- High throughput screening in 96- and 384- well format
- ANSI/SBS standards compliance
- Rigid sidewalls
- Barcode-labeling capability
- Design that prevents cross-well contamination

Custom MultiScreen[®] Filter Plates

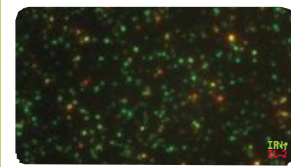
We'll create the perfect plate for your assay, with any combination of filter membrane, housing material and other required specifications.

Contact your representative:
www.MerckMillipore.com/techservice

How to spot an immune response

Our assay-validated ELISPOT plates are equipped with HA or Immobilon[®] P PVDF membranes to successfully identify T or B cell response with single-cell precision

- Validated membranes
- Uniform spot morphology
- Compatible with automation



www.MerckMillipore.com/elispot

Visit our website for validated protocols, assay development tips, FAQs, application notes, videos and more:
www.MerckMillipore.com/multiscreen

