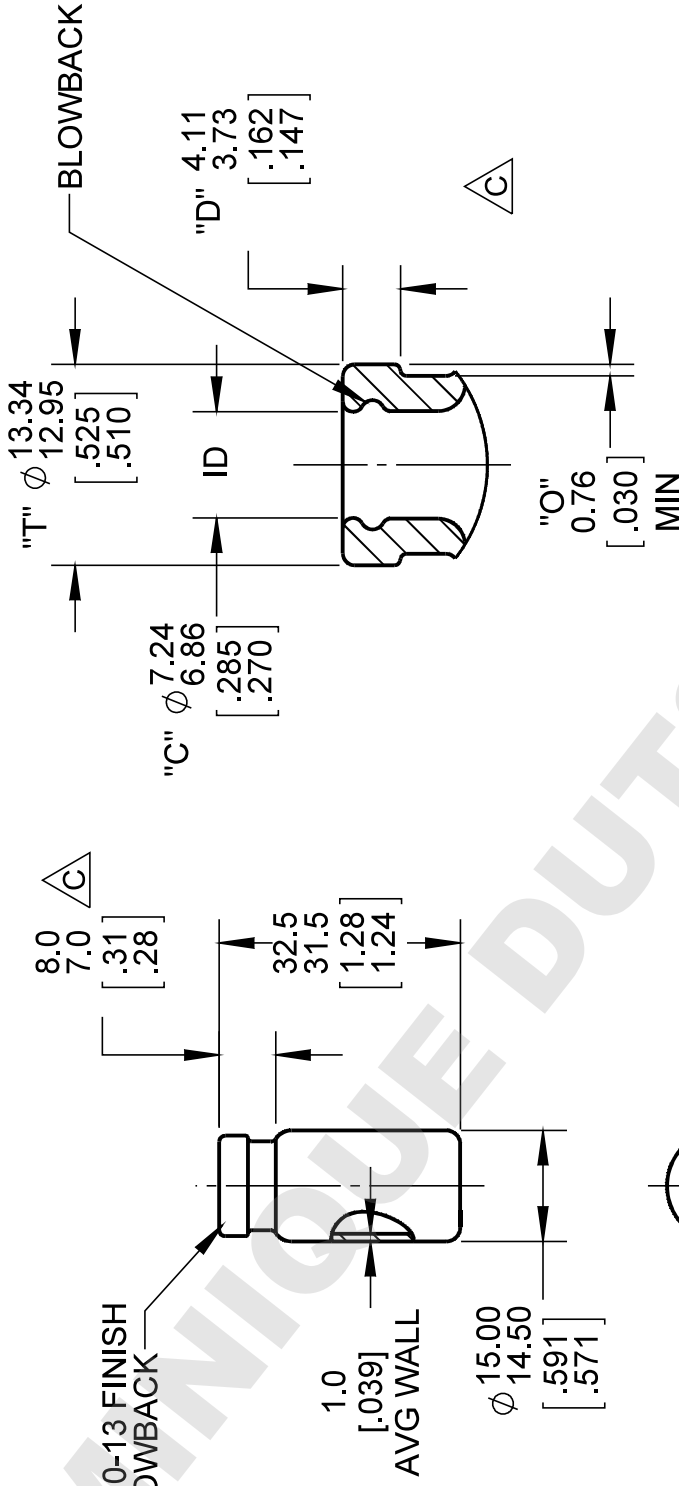


---NOTES---

1. DIMENSIONS ARE IN MILLIMETERS & [INCHES].

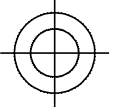
2. VIAL IS SUITABLE FOR FREEZE DRYING. C



G.P.I. 2710-13 FINISH WITH BLOWBACK

1.0
[.039]
AVG WALL

THIRD ANGLE PROJECTION



THIS DRAWING CONTAINS CONFIDENTIAL INFORMATION AND IS A COPYRIGHT OF WHEATON INDUSTRIES INC. IT MAY NOT BE DUPLICATED FOR ANY PURPOSE IN WHOLE OR IN PART WITHOUT THE EXPRESS WRITTEN CONSENT OF WHEATON INDUSTRIES INC. ALL RIGHTS RESERVED. © ELECTRONIC OR PAPER COPIES OF THIS PRINT OUTSIDE OF WHEATON'S SYSTEM ARE UNCONTROLLED AND ARE FOR REFERENCE ONLY UNLESS OTHERWISE STAMPED.

K:IGCA\223683

FINISH DETAIL
SCALE: 2 X 1

B MATERIAL: TYPE I CLEAR BOROSILICATE GLASS, 33 EXPANSION

PRODUCT COMPONENTS		ITEM	QTY	DESCRIPTION
TITLE		DATE DRAWN	12/02/04	PROJ.#
2mL SERUM VIAL, TYPE I CLR GLASS		DRAWN BY	B. LLOYD	APPROX WGT
CAPACITY		CHECKED BY	TRJ 12/02/04	AUTHORIZED
SIZE		CJM 12/02/04		
FINISH		G.P.I. 2710-13 W/BLOWBACK		
SCALE: FULL UNLESS NOTED. DO NOT SCALE THIS DRAWING.		WHEATON® 1501 North 10th Street Millville, NJ 08332-2038 USA		
MAX/MIN WAS ±		09/30/13 KW		
C	2013021815085691	03/04/13 KW		
REDRAWN IN SOLIDWORKS		08/21/12 BL		
B	20071217131528	12/20/07 BL		
A	20041124110839	12/02/04 BL		
REV	ECN #	DATE		
A	DWG.NO: 223683			