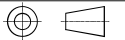


-----NOTES-----

1. DIMENSIONS ARE IN INCHES AND [MILLIMETERS]. $\triangle B$

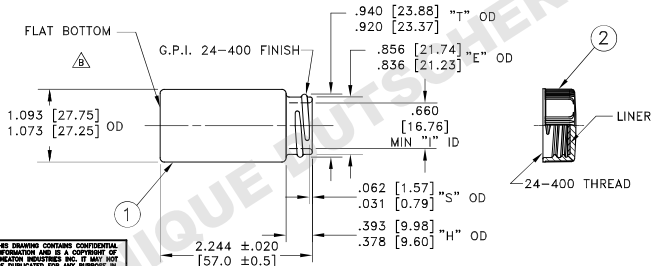
THIRD ANGLE PROJECTION



PRODUCT COMPONENTS

ITEM	QTY	DESCRIPTION
1.	72	W011561 VIAL
2.	72	W000162 CAP

UNCONTROLLED COPY



THIS DRAWING CONTAINS CONFIDENTIAL INFORMATION AND IS A COPYRIGHT OF WHEATON INDUSTRIES INC. IT MAY NOT BE DUPLICATED FOR ANY PURPOSE IN WHOLE OR IN PART WITHOUT THE EXPRESS WRITTEN CONSENT OF WHEATON INDUSTRIES INC. ALL RIGHTS RESERVED.

GCA\W224604

VIAL MATERIAL: TYPE I AMBER BOROSILICATE GLASS

CAP MATERIAL: BLACK PHENOLIC WITH .005 [0.13] PTFE/.050 [1.27] 14B WHITE RUBBER LINER

TITLE 20mL VIAL, 24-400, AMB, LAB FILE, PTFE $\triangle B$		DATE DRAWN 10/28/05	MAT'L B	2011101211223320	11/03/11 TP
CAPACITY		DRAWN BY B. LLOYD	APPROX. WGT. A	20051026164154	10/28/05 BL
FINISH G.P.I. 24-400	SCALE: FULL UNLESS NOTED. DO NOT SCALE THIS DRAWING.	CHECKED BY TRJ 10/28/05	AUTHORIZED CM 10/31/05	REV E.C.N. #	DATE
WHEATON Industries Inc. 1501 North 10th Street, Millis, NJ 08332-2038			DWG.No:A- W224604		