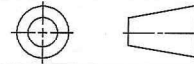


GSP W082726A

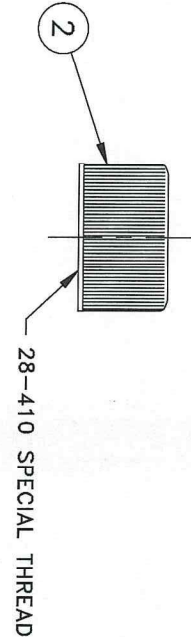
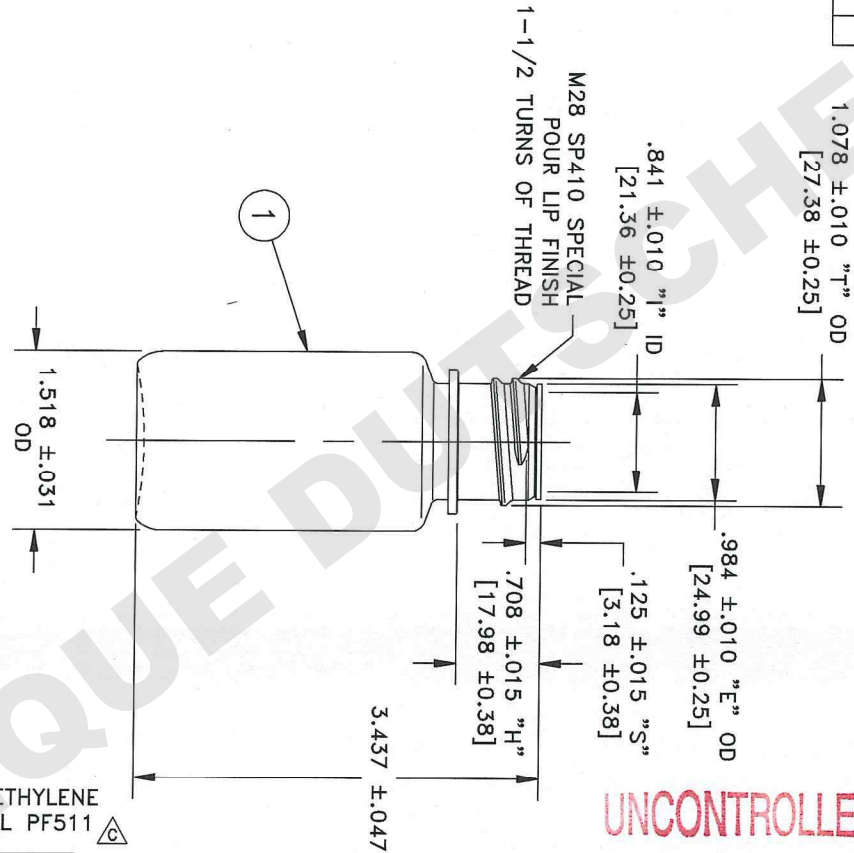
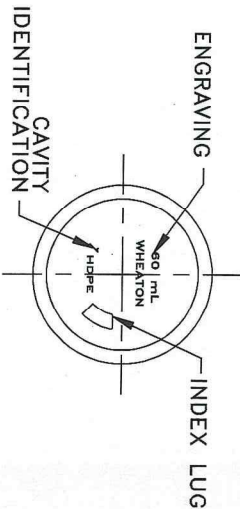
THIS DRAWING CONTAINS CONFIDENTIAL INFORMATION AND IS A COPYRIGHT OF WHEATON INDUSTRIES INC. IT MAY NOT BE DUPLICATED FOR ANY PURPOSE IN WHOLE OR IN PART WITHOUT THE EXPRESS WRITTEN CONSENT OF WHEATON INDUSTRIES INC. ALL RIGHTS RESERVED.

THIRD ANGLE PROJECTION



PRODUCT COMPONENTS

ITEM	QTY	DESCRIPTION
1.	1	W082706 BOTTLE
2.	1	W083349B CAP C/B



BOTTLE MATERIAL: AMBER HIGH DENSITY POLYETHYLENE
CAP MATERIAL: AMBER POLYPROPYLENE, BASELL PF511

UNCONTROLLED COPY
JUN 26 2013

4. APPROXIMATE WEIGHTS: CAP 4.3 ±0.4 grams, BOTTLE 10.2 ±0.8 grams.
3. ALL DIMENSIONS APPLY AFTER FLAMING.
2. TOLERANCES APPLY TO THE AVERAGE OF HIGH & LOW POINTS ON DIAMETER(S).
1. DIMENSIONS ARE IN INCHES AND [MILLIMETERS].

TITLE	60 mL BTL, WM RD, HDPE AMB W/CAP
CAPACITY	74.0 ±2.5 cc OVERFLOW
FINISH	M28 SP410 POUR LIP (SPECIAL)
SCALE: FULL UNLESS NOTED DO NOT SCALE THIS DRAWING.	TOLERA:

DATE DRAWN	08/19/05	MAT'L	
DRAWN BY	B. LLOYD	APPROX. WGT.	
CHECKED BY	TRJ 10/4/05	AUTHORIZED	CJM 10/6/05

C	20080522085119	12/30/08	BL
B	2008110408281927	11/04/08	BL
A	20050809132556	08/19/05	BL
REV	E.C.N. #	DATE	

WHEATON Industries Inc.
1501 North 10th Street, Millville, NJ 08332-2038

DWG. NO: B- W082726A

-----NOTES-----