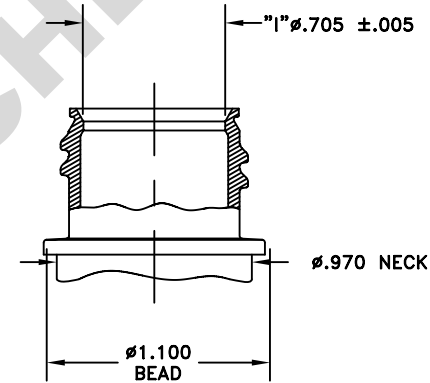
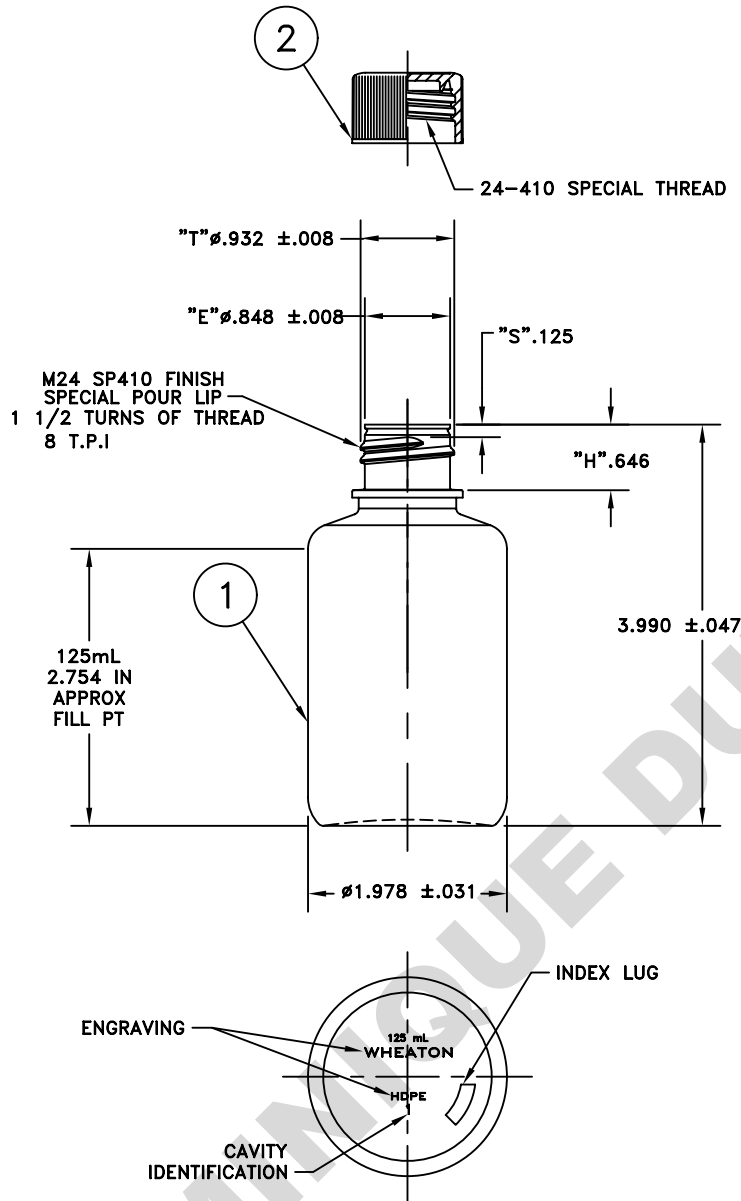


THIS DRAWING CONTAINS CONFIDENTIAL INFORMATION AND IS A COPYRIGHT OF DWK LIFE SCIENCES INC. IT MAY NOT BE DUPLICATED FOR ANY PURPOSE IN WHOLE OR IN PART WITHOUT THE EXPRESS WRITTEN CONSENT OF DWK LIFE SCIENCES INC. ALL RIGHTS RESERVED. ELECTRONIC OR PAPER COPIES OF THIS PRINT OUTSIDE OF DWK LIFE SCIENCES SYSTEMS ARE UNCONTROLLED AND ARE FOR REFERENCE ONLY UNLESS OTHERWISE STAMPED.

ITEM	QTY	DESCRIPTION
1.	72	125 ML BTL, NM RD
2.	72	24MM STAR CAP



NECK DETAIL
SCALE: 2 X 1

BOTTLE MATERIAL: AMBER HIGH DENSITY POLYETHYLENE
CAP MATERIAL: AMBER POLYPROPYLENE

4. APPROXIMATE WEIGHT: BOTTLE 15.5 ±0.8 GRAMS, CAP 3.5 ±0.3 GRAMS.	TITLE 125mL S/T STAR BTL, NM HDPE AMB, 24-410 CAP	DATE DRAWN 03/28/08	PROJ#	-	REVISED TO DWK STDS	02/23/21
3. BOTTLE CALCULATED AVERAGE WALL: .034 REF ONLY.	CAPACITY 140 ±4.5cc OVERFLOW	DRAWN BY B. LLOYD	APPROX. WGT. SEE NOTE #5	C	2011042014234573	05/02/11 BL
2. ALL DIMENSIONS APPLY AFTER FLAMING.	FINISH M24 SP410 SPL POUR LIP SIZE	CHECKED BY TRJ 3/28/08	AUTHORIZED JB 3/28/08	REV	E.C.N. #	DATE
1. DIMENSIONS ARE IN INCHES.	SCALE: FULL UNLESS NOTED DO NOT SCALE THIS DRAWING	DURAN WHEATON KIMBLE 1501 North 10th Street Millis, NJ 08332-2028 USA		DWG. NO: c-CSD-209127		

-----NOTES-----