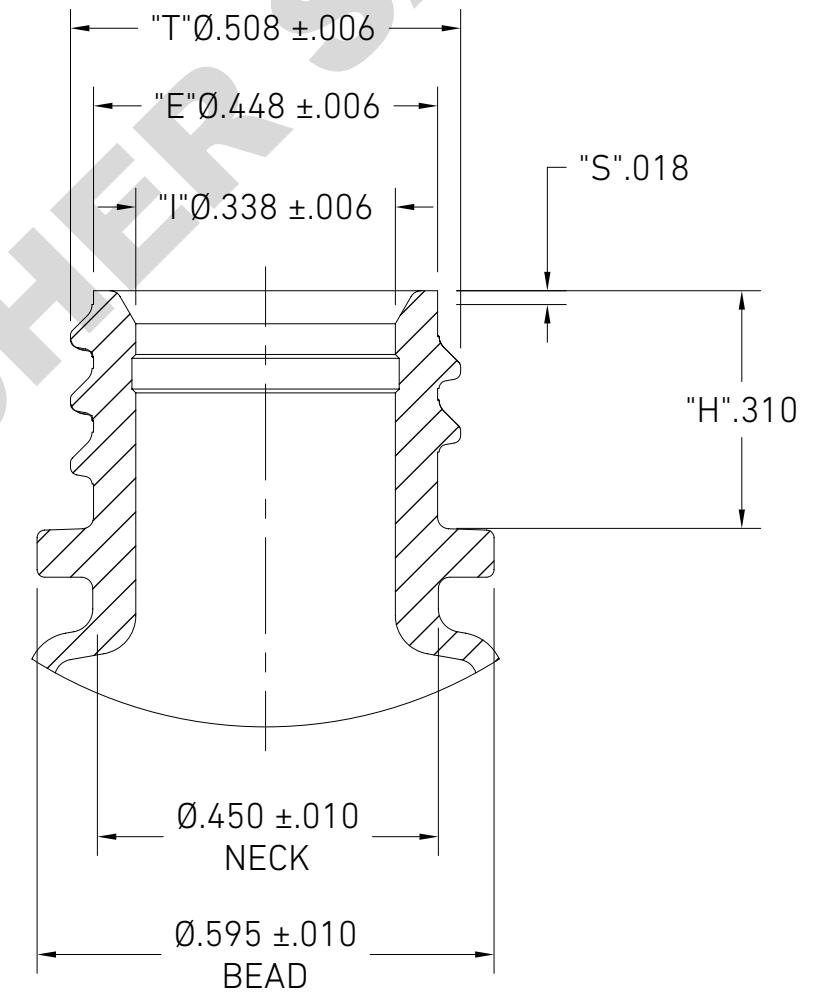
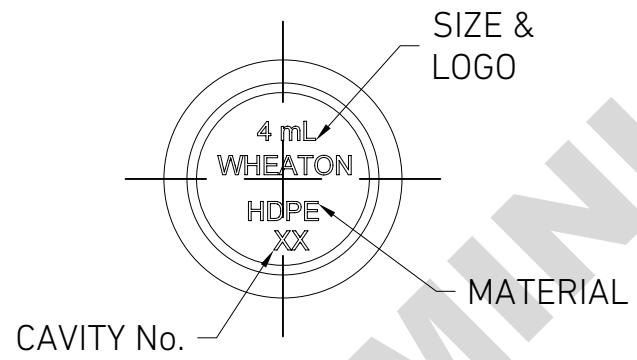
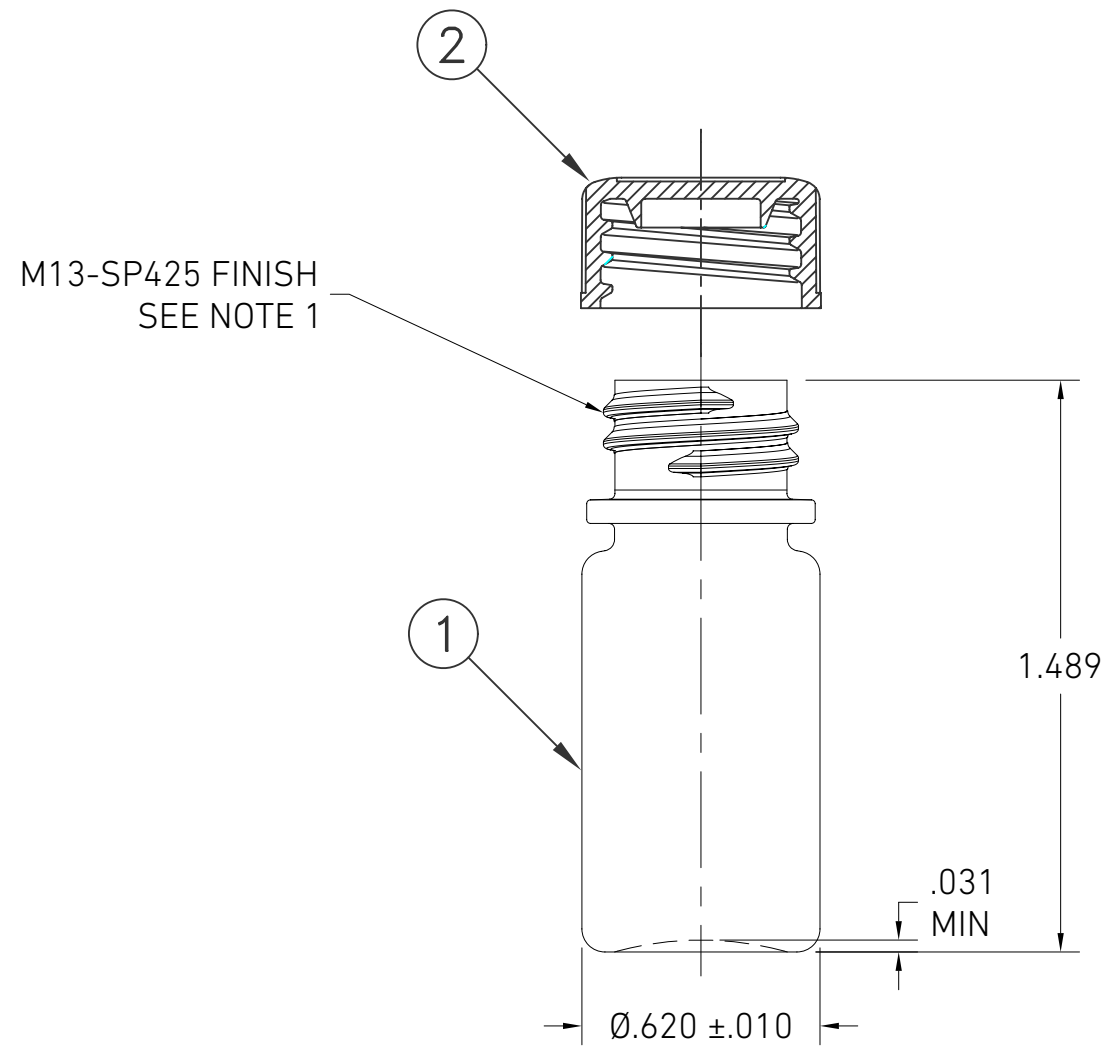


REV	DESCRIPTION OF CHANGE	DRAWN BY	DATE	ECN
C	0.61 grams was 0.64 grams	KW	09/06/19	20181009.15291077



FINISH DETAIL
SCALE 4:1

- NOTES:
- 2 TURNS OF THREAD | 12 T.P.I.
 - MID PANEL AND BOTTOM MINIMUM WALL THICKNESS: .012
 - OVERFLOW CAPACITY: 4.5 ±0.5ml
 - WEIGHTS: BOTTLE: 2.0 ±0.3g | CAP: 0.61g (APPROX.)

2	1	CAP MATERIAL: AMBER POLYPROPYLENE		
1	1	BOTTLE MATERIAL: AMBER HIGH DENSITY POLYETHYLENE		
ITEM	QTY.	MATERIAL: DESCRIPTION AND SPECIFICATIONS		
		4 ML STAR BTL, NM HDPE AMB, 13-425 CAP		
ITEM NUMBER:		209121	DRAWING NUMBER:	CSD-209121
SAP NUMBER:		209121	OLD MATERIAL NUMBER:	N/A
		DRAWN BY:	TRJ	DRAWN DATE:
				07/13/09
		SHEET SIZE:	B	SHEET NUMBER:
				1 OF 1
				SHEET SCALE:
				2:1

THIS CONFIDENTIAL AND PROPRIETARY DRAWING AND THE INFORMATION IN IT ARE THE EXCLUSIVE PROPERTY OF DWK LIFE SCIENCES. IT IS PROVIDED WITH THE UNDERSTANDING AND INTENTION THAT NOTHING CONTAINED HEREIN WILL BE REPRODUCED OR DISCLOSED TO THIRD PARTIES WITHOUT THE PRIOR EXPRESS WRITTEN CONSENT OF DWK LIFE SCIENCES.

ELECTRONIC OR PAPER COPIES OF THIS PRINT OUTSIDE OF DWK LIFE SCIENCES ARE UNCONTROLLED AND ARE FOR REFERENCE ONLY UNLESS OTHERWISE STAMPED.

TOLERANCES
DIMENSIONS IN INCHES
UNLESS SPECIFIED:
XX ± .01"
XXX ± .005"
XXXX ± .0005"
FRACTIONAL ± 1/64"



DOMINIQUE DUTSCHER SAS

DOMINIQUE DUTSCHER SAS