

Accessories

M957BK-2D

2D DataMatrix Code Inserts

The 2D Bar Code Inserts are manually pushed in and locked in place on top of tube closure.

They are generated by a permanent laser etching system providing a sharper detail, and are tested to ensure readability and uniqueness. Bar code identification can be simply stored in an electronic spreadsheet or any other data collection system. **Pk of 100, Cs of 500**



M957 Series Color Coded CapInsert™

At any time the Color Coded Insert could be applied to the tube closure, which eliminates jeopardizing the integrity of your sample by transferring it to another vial. It is manually press fit and locks into place on top of closure. **Pk of 100, Cs of 500**

M957B	Blue		M957R	Red	
M957G	Green		M957Y	Yellow	
M957L	Lilac				

T330-75CL

CapLock™ Clip for 5.0 ml Tubes with Snap Cap

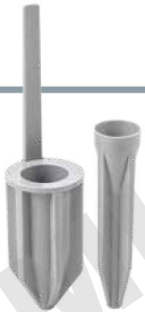
Made of polyethylene

The unique design of the CapLock™ provides extra security against inadvertent cap openings on critical samples or during incubation above 80 °C.

Ideal for shipping samples. **Pk of 10, Cs of 100**



T330-75CLB	Blue	
T330-75CLG	Green	
T330-75CLR	Red	
T330-75CLW	White	
T330-75CLY	Yellow	



Universal Centrifuge adapters

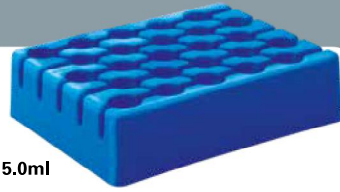
Made of acetal plastic

Reusable and freezable (-90 °C)

Pk of 8

T330AD15 For 15 ml rotor bores or adapters.

T330AD50 For 50 ml rotor bores or adapters.



T450 Series Rack 5.0ml

Made of polypropylene

Reusable, autoclavable and freezable (-90 °C). Wells are numbered for easier identification 25 tubes. **Cs of 5**

T450-25B Blue **T450-25R** Red **T450-25O** Orange

5.0 ml Tube Storage Boxes

Cover made of polystyrene / Base made of high impact polystyrene

Color your world with a wide variety of economical storage boxes for your snap or screw cap 5.0 ml tubes

These storage boxes are designed to be used at temperatures between -90 °C and +80 °C.

A transparent cover allows the user to see the contents of the box, and is keyed to the base to prevent misalignment. Printed with a series of squares numbered from 1 to 25, the surface accepts writing with markers, facilitating inventory control.

A unique color coding system uses colored plastic grids to separate the cover from the base.

Cat No.	Description	Qty/Pk	Qty/Cs.
T330-25B	Blue grid	3	18
T330-25G	Green grid	3	18
T330-25P	Pink grid	3	18
T330-25Y	Yellow grid	3	18



- 1 Cover has numbered squares for easy sample identification
- 2 Two corners of cover and base are cut to prevent misalignment
- 3 Writing surface for identifying base and/or cover
- 4 Tubes readily visible through transparent cover
- 5 Air vents minimizing condensation
- 6 Drain holes under base
- 7 Stackable
- 8 Color coded grid

Simport
Since 1975 Scientific inc.

Simport

5.0ml Tubes



Simport
Since 1975 Scientific inc.
A family owned Canadian company

2588 Bernard-Pilon
Beloelil, Quebec
J3G 4S5
Canada

T - 450 464-1723
F - 450 464-3394
info@simport.com
www.simport.com

Distributed by:

MKT-T330LL1P4 02/2018

Printed in Canada

www.simport.com

T330 & T365 Series

The Simpport 5.0 ml, KlikLok™ tube and MacrewTube™ have been designed for the simple and safe processing of medium-sized sample volumes. Up until now, for samples larger than 2.0 ml, the only choice was to use large conical screw-cap tubes (15 ml for example) which were both impractical and prone to contamination.

The potential pipettor shaft contamination is greatly reduced since the 59 mm and 62 mm total tube length (vs. 120 mm for 15 ml tubes) is short enough for standard 1 ml or 5 ml tips to reach the tube's conical bottom.

The 16 mm tube diameter is identical to the diameter of standard 15 ml tubes, ensuring further compatibility with centrifuge rotors, etc.

T330-75 Series 5.0 ml KlikLok™ Tubes

Made of polypropylene

Cat #	Color	Pk	Cs
Flat Top Series			
T330-75N	○ Natural	100	200
T330-75B	● Blue	100	200
T330-75G	● Green	100	200
T330-75R	● Red	100	200
T330-75Y	● Yellow	100	200
T330-75AM	● Amber	100	200
Flat top with cavity for 2D & CapInsert™			
T330-75NS	○ Natural Sterile	20	200
T330-75AMS	● Amber Sterile	20	200

Flat top with cavity for 2D & CapInsert™

Flat top designed to receive either a Color CapInsert™ (M957Series) or 2D Inserts M957BK-2D

T330-76N	○ Natural	100	200
T330-76B	● Blue	100	200
T330-76G	● Green	100	200
T330-76R	● Red	100	200
T330-76Y	● Yellow	100	200
T330-76AM	● Amber	100	200
Flat top with cavity for 2D & CapInsert™			
T330-76NS	○ Natural Sterile	20	200
T330-76AMS	● Amber Sterile	20	200



Features and Benefits

- RNase, DNase, Pyrogen and DNA free
- Manufactured of exceptionally high-quality, transparent polypropylene without the use of slip agents, plasticizers, mold release agents and biocide substances
- Writing surface on flat cap and side wall for quick sample identification
- Sample identification is easily achieved by the use of a CAPINSERT™, or with a 2D Datamatrix laser etched barcode insert
- Precise lid sealing for minimal evaporation rate during long-term storage
- Center of cap with «membrane» area designed for easy puncture and access with a syringe/needle
- Once punctured, the opening can be useful for venting the internal pressure during heating
- Exceptional centrifugation stability of up to 25,000 x g
- Autoclavable when open (121 °C, 20 min)
- Withstands temperatures from +121 °C to -196 °C (not to be immersed in LN₂ liquid phase)

T365 Series 5.0 ml MacrewTube™ with screw cap

Tube made of polypropylene

Cap made of high density polyethylene

Cat #	Description	Qty/Pk	Qty/Cs
Tubes only			
T365-5TN	○ 5.0 ml. MacrewTube™ Tube only, Polypropylene, Natural	100	200
T365-5TAM	● 5.0 ml. MacrewTube™ Tube only, Polypropylene, Amber	100	200

Sterile tubes with attached caps

T365-5NLSS	MacrewTube™, Natural with Natural Lip Seal Screw Cap – Sterile	20	200
T365-5AMLSS	MacrewTube™, Amber with Amber Lip Seal Screw Cap – Sterile	20	200

Flat Top Closure Designed to receive either a Color CapInsert (M957Series) or 2D Insert (M957BK-2D)

T366NLS	○ Lip Seal Screw Cap - Natural	100	200
T366AMLS	● Lip Seal Screw Cap - Amber	100	200
T366BLS	● Lip Seal Screw Cap - Blue	100	200
T366GLS	● Lip Seal Screw Cap - Green	100	200
T366RLS	● Lip Seal Screw Cap - Red	100	200
T366WLS	● Lip Seal Screw Cap - White	100	200
T366YLS	● Lip Seal Screw Cap - Yellow	100	200

Flat Top Tethered Closure Designed to receive either a Color CapInsert (M957Series) or 2D Insert (M957BK-2D)

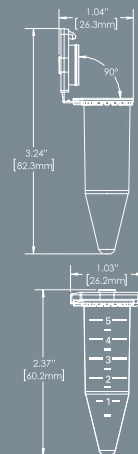
T366NLSL	○ Lip Seal Screw Cap with Loop – Natural	100	200
T366AMLSL	● Lip Seal Screw Cap with Loop - Amber	100	200
T366BLSL	● Lip Seal Screw Cap with Loop - Blue	100	200
T366GLSL	● Lip Seal Screw Cap with Loop - Green	100	200
T366RLSL	● Lip Seal Screw Cap with Loop - Red	100	200
T366WLSL	● Lip Seal Screw Cap with Loop - White	100	200
T366YLSL	● Lip Seal Screw Cap with Loop - Yellow	100	200

T330

Anatomy of a KlikLok™ Tube

- 1 Smooth bottom has no sharp points hurting your fingers
- 2 Ultra clear resin gives you a better view
- 3 Slim design fits high capacity rotors
- 4 Graduated every 0.5 ml
- 5 Prevents unintentional lid opening during incubation, storage and transportation
- 6 90° hinge orients cap for easy fit
- 7 Chamfered opening for pouring supernatant
- 8 Center of cap with "membrane" area for easy piercing

When the internal pressure approaches an unsafe level, the cap partially opens, softly, in a controlled manner, releasing excess pressure, but preventing any splashing of contents. In applications over 80 °C, we recommend the Simpport CapLock™ clips.



T365

Anatomy of a MacrewTube™

- 1 Smooth bottom has no sharp points hurting your fingers
- 2 Ultra clear resin for a better view
- 3 Slim design with high capacity rotors
- 4 Graduated every 0.5 ml
- 5 90° hinge orients cap for easy fit
- 6 ¾ turn leakproof screw cap
- 7 Center of cap with "membrane" area

