

Embi Tec Pre-Cast Gel Guide

Gel Compatibility

RunOne™ Pre-Cast Gels do not require a specific gel apparatus. They will work in a gel box which has a platform of sufficient size. We recommend using the RunOne™ Electrophoresis System, as we have optimized all run parameters on this system.

Buffer Capacity

TBE has a higher buffer capacity than TAE. The buffer capacity for TAE is relatively low and can become exhausted over long runs.

Temperature

TBE tends to run cooler than TAE. For example, when TBE is compared to TAE in the RunOne™ Electrophoresis System, the TBE buffer is 5-10°C cooler over a 40 minute run at 100V.

Resolution

The resolving power of TAE and TBE are nearly identical with the exception of supercoiled DNA which is better resolved in TAE than in TBE.

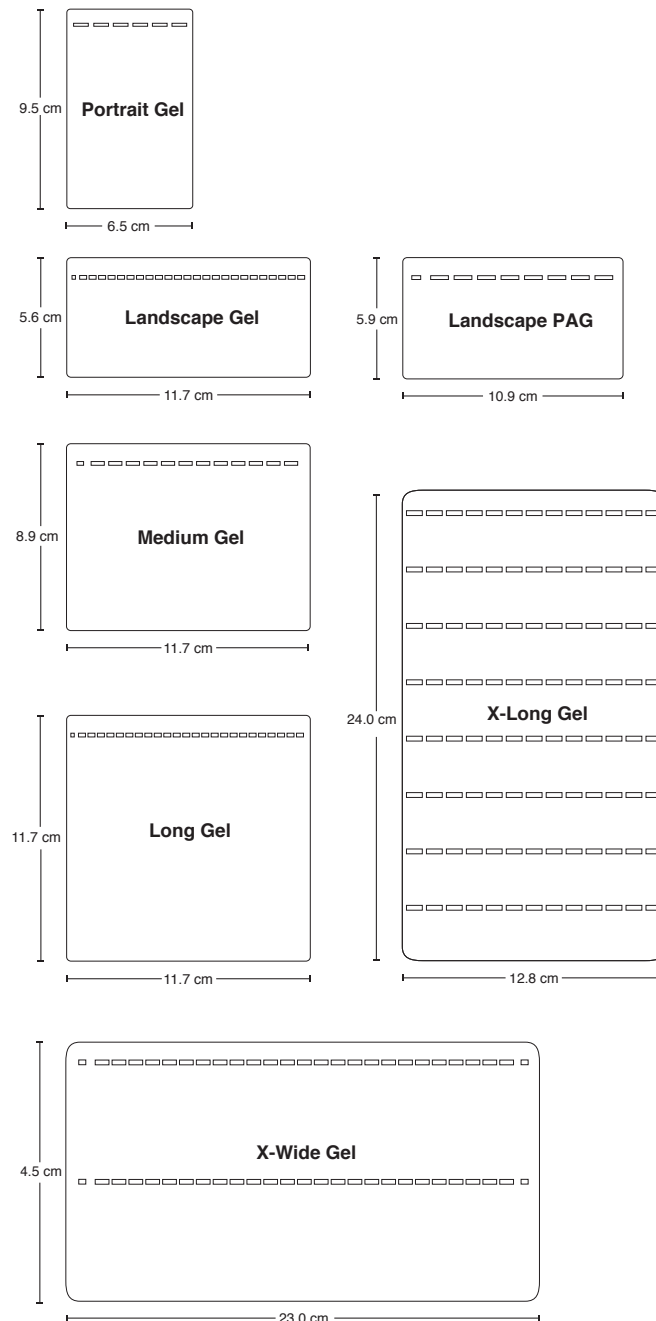
Run Times

Double stranded linear DNA migrates about 10% faster through TAE than TBE, but because TBE runs cooler, the bands are sharper and straighter.

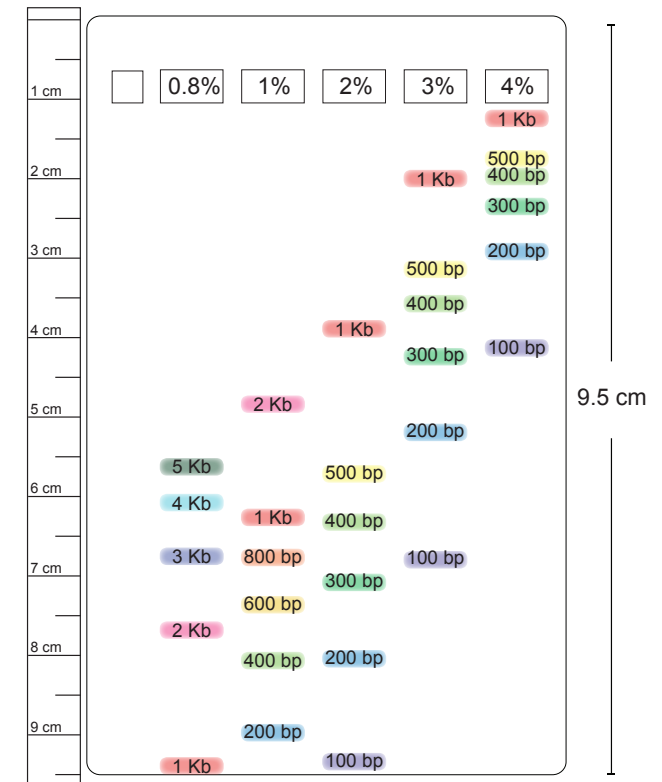
Shelf Life

- **0.8%-3% Agarose gels with EtBr** - 7 months at room temperature
- **4% Agarose gels with EtBr** - 3 months at room temperature
- **GreenGel** - 3 months at room temperature
- **Agarose gels with no stain** - 1 year at room temperature
- **Polyacrylamide gels** - 6 months at 4°C

Gel Size Guide



Resolution Guide



(858) 684-3190

info@embitec.com