

Pre-stained with GelGreen™

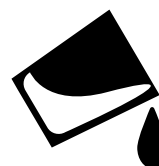
Part of a new generation of fluorescent DNA stains designed to replace ethidium bromide (EtBr) and UV.



Tear
peel off
the lid



Heat
microwave
for 30 seconds



Pour
cast your
gel and go!

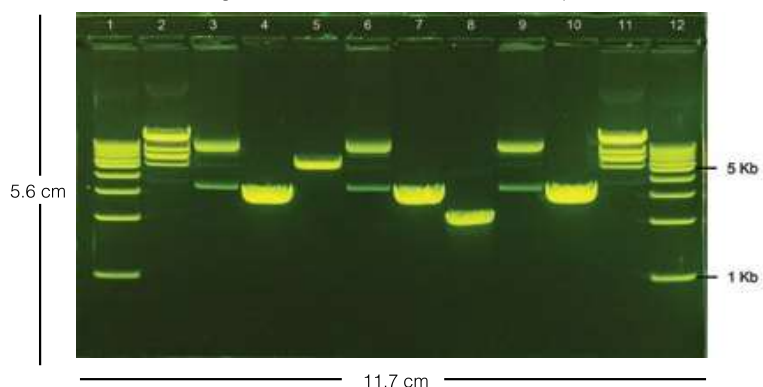
Cat.No.	Concentration	Buffer	Description
EC-3500	0.8%	TAE	GreenGel Cup with GelGreen stain
EC-3501	1%	TAE	GreenGel Cup with GelGreen stain
EC-3502	2%	TAE	GreenGel Cup with GelGreen stain
EC-3503	3%	TAE	GreenGel Cup with GelGreen stain
EC-3504	4%	TAE	GreenGel Cup with GelGreen stain
EC-4500	0.8%	TBE	GreenGel Cup with GelGreen stain
EC-4501	1%	TBE	GreenGel Cup with GelGreen stain
EC-4502	2%	TBE	GreenGel Cup with GelGreen stain
EC-4503	3%	TBE	GreenGel Cup with GelGreen stain
EC-4504	4%	TBE	GreenGel Cup with GelGreen stain

PreCast GreenGel™

Want to escape the hazards of ethidium bromide?

The safety and sensitivity of GelGreen will set you free!

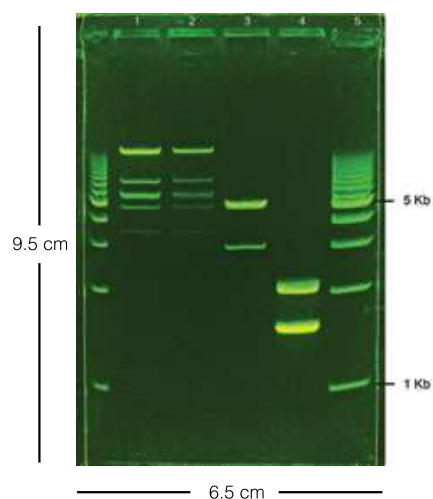
GG3600 1% Agarose TAE w/ GelGreen, Landscape Gel 12+1 well



Run at 100 V for 45 min.

- Lane# 1 & 12: SmartMark 1 Kb DNA ladder
- Lane# 2 & 11: Lambda/EcoRI Marker
- Lane# 3, 6 & 9: Plasmid DNA
- Lane# 4, 7 & 10: 3 Kb PCR Fragment
- Lane# 5: 5 Kb PCR Fragment
- Lane# 8: 2112 bp PCR Fragment

GG5100 1% Agarose TAE w/GelGreen Portrait Gel 5+1 well



Run at 75 V for 75 min.

- Lane# 1 & 2: Lambda/EcoRI Marker
- Lane# 3: 3 Kb & 5 Kb PCR Fragment
- Lane# 4: 1545 bp & 2112 bp PCR Product
- Lane# 5: SmartMark 1 Kb Ladder

No half and half gel background

A typical EtBr gel has half of the gel brighter than the other half after electrophoresis. PreCast GreenGel has homogenous background through the run. No additional staining or destaining is needed for sharp, crisp bands.

Sensitive and safe

PreCast GreenGels are as sensitive as PreCast EtBr gels without the additional expense of hazardous waste disposal. Want it to be even safer? Use blue light illumination instead of UV light!