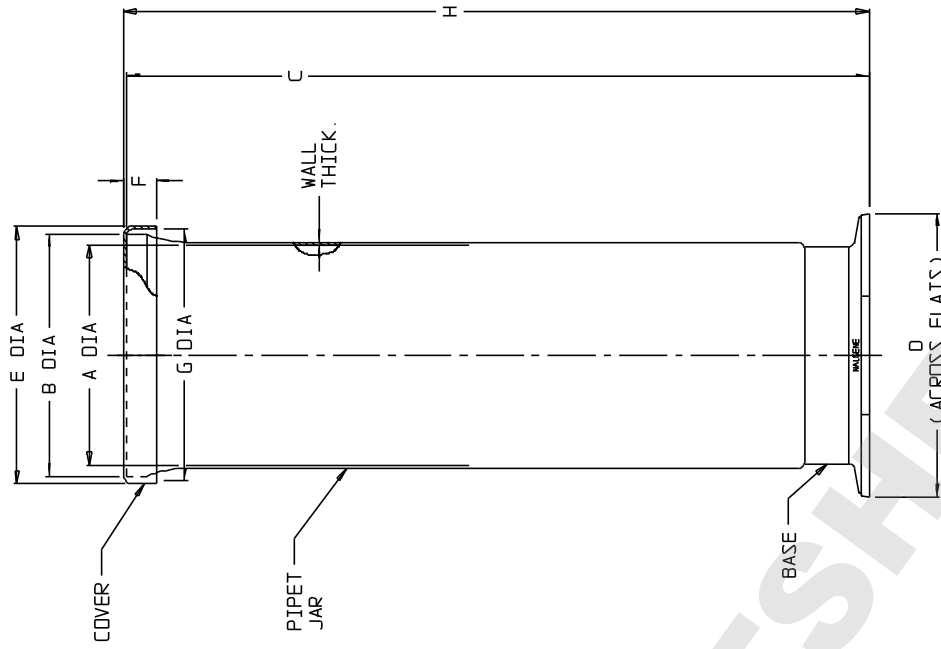


CATALOG NO.	SIZE CODE	MATERIALS		
		JAR	COVER	BASE
5242-0020	B	XLPE	XLPE	RED PPCC
5242-0030	C	XLPE	XLPE	RED HOPE
5242-0040	D	XLPE	XLPE	RED PPCC
5242-0050	E	XLPE	XLPE	RED PPCC
5242-0060	F	XLPE	XLPE	RED PPCC

SIZE CODE	B		C		D	
	INCH	MM	INCH	MM	INCH	MM
A (JAR I.D.)	6.7	170	4.7	119	6.7	170
B (JAR OD)	7.3	185	5.2	132	7.3	185
C (JAR HEIGHT)	9.8	249	18.3	464	20.8	528
D (BASE WIDTH)	8.6	218	6.9	175	8.6	218
E (COVER OD)	7.8	198	5.7	145	7.8	198
F (COVER HEIGHT)	1.0	25	1.0	25	1.0	25
G (COVER I.D.)	7.6	193	5.5	140	7.6	193
H (ASSEMBLY HEIGHT)	9.9	251	18.3	465	20.9	531
NOM. WALL THICKNESS	0.10	2.5	0.10	2.5	0.10	2.5

SIZE CODE	E		F	
	INCH	MM	INCH	MM
A (JAR I.D.)	6.7	170	6.6	168
B (JAR OD)	7.3	185	7.4	188
C (JAR HEIGHT)	28.0	711	36.1	917
D (BASE WIDTH)	8.6	218	8.6	218
E (COVER OD)	7.8	198	7.9	201
F (COVER HEIGHT)	1.0	25	1.0	25
G (COVER I.D.)	7.6	193	7.6	193
H (ASSEMBLY HEIGHT)	28.1	714	36.3	922
NOM. WALL THICKNESS	0.10	2.5	0.16	4.1

- NOTES:
1. ALL DIMENSIONS ARE NOMINAL AND IN INCHES AND MILLIMETERS UNLESS OTHERWISE NOTED.
 2. THIS IS NOT A PRODUCTION DRAWING, BUT IS FOR INFORMATIONAL PURPOSES ONLY, AND IS SUBJECT TO CHANGE WITHOUT NOTICE.



SPECS ON BACK

NOT TO SCALE

ThermoFisher
SCIENTIFIC

Thermo Fisher Scientific
75 Pancosmo Creek Drive
Rochester, NY 14625-2385, USA

MAKE MCC /1SP APP'D PVC
OR 'B' PVC 4/7/00

DESCRIPTION:

PSS 00-5242-XXXX

REV 0400

PIPET JARS

CONFIDENTIAL

THIS PRODUCT SPECIFICATION SHEET CONTAINS CONFIDENTIAL AND/OR PROPRIETARY INFORMATION AND IS TO BE USED ONLY FOR THE EXPRESSED PURPOSES AGREED UPON BY AN AUTHORIZED OFFICER OF THERMO FISHER SCIENTIFIC.