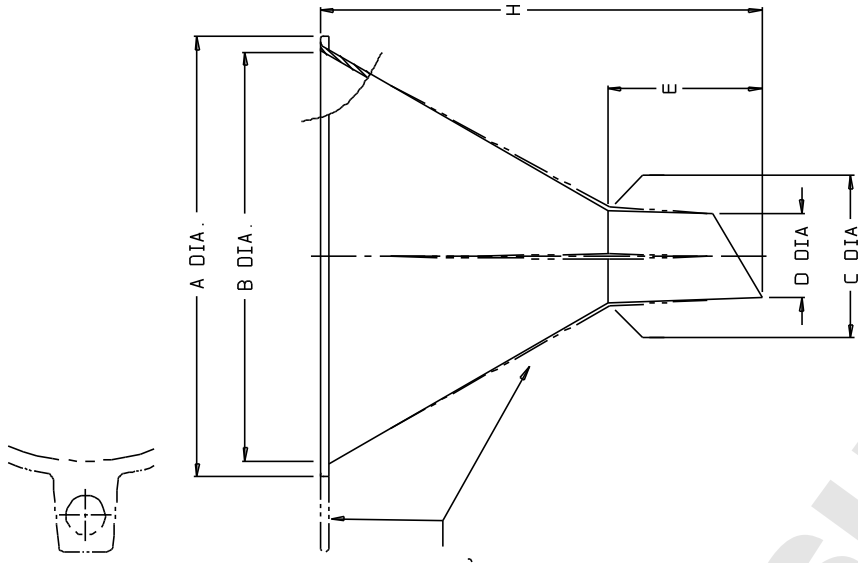


CAT. NO.	APPROX. SIZES (TOP I.D. IN MM)				MATERIAL	
	52	76	101	152		248
4260-	SEE CHART BELOW					
SIZE CODE.....	-0020		-0030		-0040	
MATERIAL.....	LDPE		LDPE		LDPE	
NOM WT (gns).....	10		28		52	
	INCH	MM	INCH	MM	INCH	MM
A DIA.....	2.19 ±0.04	55.6 ±1.0	2.23 ±0.04	56.6 ±1.0	4.34 ±0.04	110.2 ±1.0
B (TOP I.D.).....	1.90 ±0.04	48.3 ±1.0	2.85 ±0.04	72.4 ±1.0	3.96 ±0.04	100.6 ±1.0
C DIA.....	0.54 ±0.02	13.7 ±0.5	0.61 ±0.02	15.5 ±0.5	0.84 ±0.02	21.3 ±0.5
D DIA.....	0.40 ±0.02	10.2 ±0.5	0.43 ±0.02	10.9 ±0.5	0.46 ±0.02	11.7 ±0.5
E (STEM HT).....	1.52 ±0.04	38.6 ±1.0	1.56 ±0.04	39.6 ±1.0	2.84 ±0.04	72.1 ±1.0
H (OVERALL HT).....	2.80 ±0.04	71.1 ±1.0	3.89 ±0.04	98.8 ±1.0	5.8 ±0.1	148 ±3
SIZE CODE.....	-0060		-0100		-0120	
MATERIAL.....	LDPE		LDPE		HDPE	
NOM WT (gns).....	154		385		620	
	INCH	MM	INCH	MM	INCH	MM
A DIA.....	6.6 ±0.1	167 ±3	10.5 ±0.3	267 ±8	13.6 ±0.3	345 ±8
B (TOP I.D.).....	5.9 ±0.1	150 ±3	9.9 ±0.3	251 ±8	13.4 ±0.3	340 ±8
C DIA.....	0.69 ±0.02	17.5 ±0.5	1.11 ±0.04	28.2 ±1.0	1.54 ±0.04	39.1 ±1.0
D DIA.....	0.62 ±0.02	15.7 ±0.5	0.91 ±0.02	23.1 ±0.5	1.30 ±0.04	33.0 ±1.0
E (STEM HT).....	3.00 ±0.04	76.2 ±1.0	4.60 ±0.04	116.8 ±1.0	7.5 ±0.1	191 ±3
H (OVERALL HT).....	7.7 ±0.1	196 ±3	12.5 ±0.3	318 ±8	17.5 ±0.5	445 ±13

NOTES:
 1. ALL DIMENSIONS ARE NOMINAL AND IN INCHES AND MILLIMETERS UNLESS OTHERWISE NOTED.
 2. THIS IS NOT A PRODUCTION DRAWING, BUT IS FOR INFORMATIONAL PURPOSES ONLY, AND IS SUBJECT TO CHANGE WITHOUT NOTICE.



TAB AND RIBS ON SIZES -0040, -0060, -0100, & -0120

NOT TO SCALE

SPECS ON BACK

NOT TO SCALE

CONFIDENTIAL
 THIS PRODUCT SPECIFICATION SHEET CONTAINS CONFIDENTIAL AND/OR PROPRIETARY INFORMATION AND IS TO BE USED ONLY FOR THE EXPRESSED PURPOSES AGREED UPON BY AN AUTHORIZED OFFICER OF THERMO FISHER SCIENTIFIC.

ThermoFisher
SCIENTIFIC

Thermo Fisher Scientific
 75 Pancromo Creek Drive
 Rochester, NY 14625-2385, USA

NAME	MCC	APP PVC	PSS 00-4260-XXXX-1	REV	1294
DATE	PVC	12/28/94			
DESCRIPTION:					

HEAVY DUTY FUNNELS