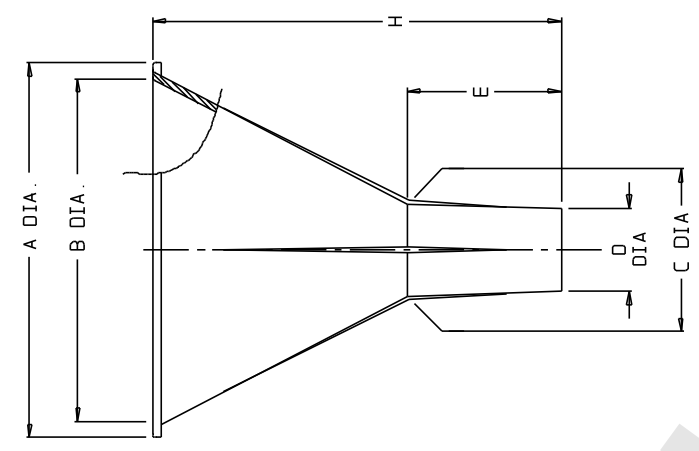


CAT. NO.	APPROX. SIZES (TOP I.D. IN MM)					MATERIAL	
	65	84	103	122	155		205
4256-						SEE CHART BELOW	
SIZE CODE	-0234					-0314	-0414
MATERIAL	PP					PP	PP
NOM WT (gns)	10					18	29
	INCH	MM	INCH	MM	INCH	MM	
A DIA	2.69 ±0.04	68.3 ±1.0	3.44 ±0.04	87.4 ±1.0	4.30 ±0.06	109.2 ±1.5	
B (TOP I.D.)	2.45 ±0.04	62.2 ±1.0	3.15 ±0.04	80.0 ±1.0	3.87 ±0.04	98.3 ±1.0	
C DIA	0.53 ±0.02	13.5 ±0.5	0.50 ±0.02	12.7 ±0.5	0.70 ±0.02	17.8 ±0.5	
D DIA	0.39 ±0.02	9.9 ±0.5	0.37 ±0.02	9.4 ±0.5	0.44 ±0.02	11.2 ±0.5	
E (STEM HT)	0.82 ±0.02	20.8 ±0.5	0.85 ±0.02	21.6 ±0.5	1.47 ±0.04	37.3 ±1.0	
H (OVERALL HT)	2.58 ±0.04	65.5 ±1.0	3.71 ±0.04	94.2 ±1.0	4.61 ±0.06	117.1 ±1.5	
SIZE CODE	-0500					-0638	-0800
MATERIAL	HDPE					HDPE	HDPE
NOM WT (gns)	41					73	95
	INCH	MM	INCH	MM	INCH	MM	
A DIA	4.99 ±0.06	126.7 ±1.5	6.3 ±0.1	160 ±3	8.0 ±0.1	203 ±3	
B (TOP I.D.)	4.62 ±0.06	117.3 ±1.5	5.9 ±0.1	150 ±3	7.6 ±0.1	193 ±3	
C DIA	0.74 ±0.02	18.8 ±0.5	1.88 ±0.04	47.8 ±1.0	0.94 ±0.02	23.9 ±0.5	
D DIA	0.51 ±0.02	13.0 ±0.5	1.03 ±0.02	26.2 ±0.5	0.78 ±0.02	19.8 ±0.5	
E (STEM HT)	1.81 ±0.04	46.0 ±1.0	2.61 ±0.04	66.3 ±1.0	1.79 ±0.04	45.5 ±1.0	
H (OVERALL HT)	5.7 ±0.1	145 ±3	6.9 ±0.1	175 ±3	7.9 ±0.1	201 ±3	

NOTES:  
 1. ALL DIMENSIONS ARE NOMINAL AND IN INCHES AND MILLIMETERS UNLESS OTHERWISE NOTED.  
 2. THIS IS NOT A PRODUCTION DRAWING, BUT IS FOR INFORMATIONAL PURPOSES ONLY, AND IS SUBJECT TO CHANGE WITHOUT NOTICE.



NDT TO SCALE

SPECS ON BACK

NDT TO SCALE

CONFIDENTIAL  
 THIS PRODUCT SPECIFICATION SHEET CONTAINS CONFIDENTIAL AND/OR PROPRIETARY INFORMATION AND IS TO BE USED ONLY FOR THE EXPRESSED PURPOSES AGREED UPON BY AN AUTHORIZED OFFICER OF THERMO FISHER SCIENTIFIC.

**ThermoFisher SCIENTIFIC**  
 Thermo Fisher Scientific  
 75 Pancromo Creek Drive  
 Rochester, NY 14625-2385, USA

NAME	MCC	DATE	12/28/94	PSS	00-4256-XXXX-1	REV	1294	
DR'G	PVC	DESCRIPTION:						

UTILITY FUNNELS