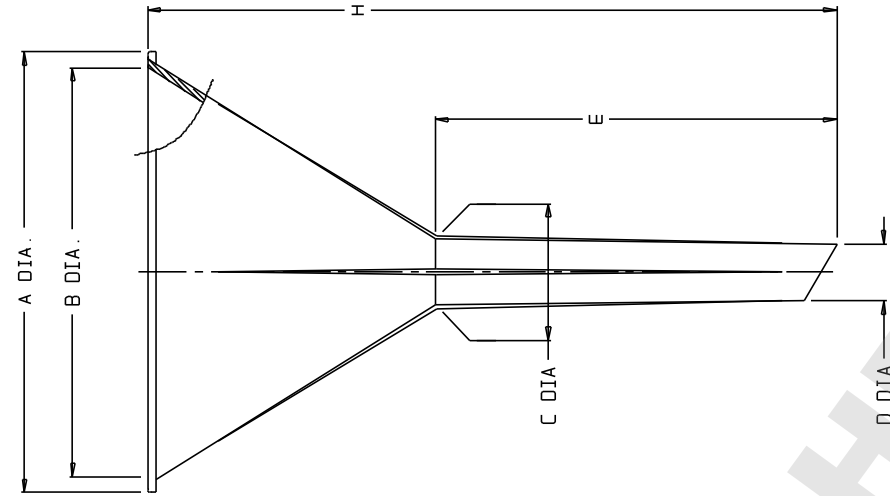


CAT. NO.	APPROX. SIZES (TOP I.D. IN MM)								MATERIAL	
	41	52	62	72	84	99	109	168		
4250-										PP
SIZE CODE	-0035		-0045		-0055		-0065			
NOM WT (gns)	4		6		11		17			
	INCH	MM	INCH	MM	INCH	MM	INCH	MM	INCH	MM
A DIA	1.62 ±0.04	41.1 ±1.0	2.05 ±0.04	52.1 ±1.0	2.42 ±0.04	61.5 ±1.0	2.63 ±0.04	71.9 ±1.0		
B (TOP I.D.)	1.38 ±0.04	35.1 ±1.0	1.65 ±0.04	47.2 ±1.0	2.13 ±0.04	54.1 ±1.0	2.40 ±0.04	63.2 ±1.0		
C DIA	0.29 ±0.02	7.4 ±0.5	0.34 ±0.02	8.6 ±0.5	0.32 ±0.02	8.1 ±0.5	0.34 ±0.02	8.6 ±0.5		
D DIA	0.24 ±0.02	6.1 ±0.5	0.27 ±0.02	6.9 ±0.5	0.28 ±0.02	7.1 ±0.5	0.29 ±0.02	7.4 ±0.5		
E (STEM HT)	1.97 ±0.04	50.0 ±1.0	1.97 ±0.04	50.0 ±1.0	2.38 ±0.04	60.5 ±1.0	2.30 ±0.04	58.4 ±1.0		
H (OVERALL HT)	3.04 ±0.04	77.2 ±1.0	3.35 ±0.04	85.3 ±1.0	4.12 ±0.06	104.6 ±1.5	4.40 ±0.06	111.8 ±1.5		
SIZE CODE	-0075		-0090		-0100		-0160			
NOM WT (gns)	21		29		35		105			
	INCH	MM	INCH	MM	INCH	MM	INCH	MM	INCH	MM
A DIA	3.32 ±0.04	84.3 ±1.0	3.90 ±0.05	99.1 ±1.5	4.27 ±0.06	108.5 ±1.5	5.6 ±0.1	168 ±3		
B (TOP I.D.)	2.98 ±0.04	75.7 ±1.0	3.65 ±0.06	92.7 ±1.5	3.85 ±0.06	97.8 ±1.5	6.2 ±0.1	158 ±3		
C DIA	0.38 ±0.02	9.7 ±0.5	0.40 ±0.02	10.2 ±0.5	0.44 ±0.02	11.2 ±0.5	0.87 ±0.02	22.1 ±0.5		
D DIA	0.28 ±0.02	7.1 ±0.5	0.32 ±0.02	8.1 ±0.1	0.35 ±0.02	8.9 ±0.5	0.52 ±0.02	13.2 ±0.5		
E (STEM HT)	3.17 ±0.04	80.5 ±1.0	3.51 ±0.06	89.2 ±1.5	3.93 ±0.06	99.8 ±1.5	6.0 ±0.1	152 ±3		
H (OVERALL HT)	5.7 ±0.1	145 ±3	6.5 ±0.1	165 ±3	7.2 ±0.1	183 ±3	10.9 ±0.3	277 ±6		

NOTES:
 1. ALL DIMENSIONS ARE NOMINAL AND IN INCHES AND MILLIMETERS UNLESS OTHERWISE NOTED.
 2. THIS IS NOT A PRODUCTION DRAWING, BUT IS FOR INFORMATIONAL PURPOSES ONLY, AND IS SUBJECT TO CHANGE WITHOUT NOTICE.



NOT TO SCALE

SPECS ON BACK

NOT TO SCALE

CONFIDENTIAL
 THIS PRODUCT SPECIFICATION SHEET CONTAINS CONFIDENTIAL AND/OR PROPRIETARY INFORMATION AND IS TO BE USED ONLY FOR THE EXPRESSED PURPOSES AGREED UPON BY AN AUTHORIZED OFFICER OF THERMO FISHER SCIENTIFIC.

ThermoFisher SCIENTIFIC
 Thermo Fisher Scientific
 75 Pancromo Creek Drive
 Rochester, NY 14625-2385, USA

DATE	MCC	APP'D	
CR'D	PVC	12/28/94	
DESCRIPTION:			PSS 00-4250-XXXX-1
			REV 1294

ANALYTICAL FUNNELS