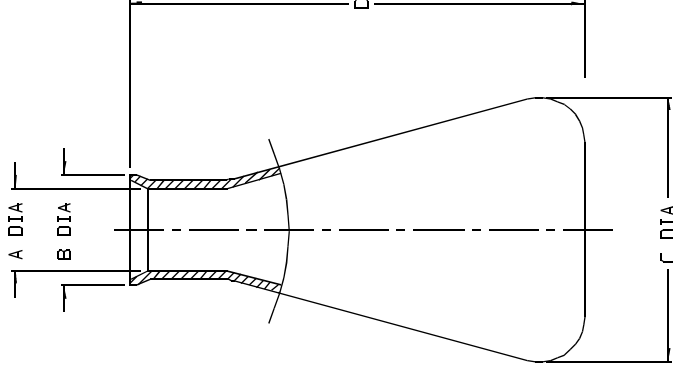


CAT. NO.	NOMINAL SIZES (mL)					MATERIAL
	50	125	250	500	1000	
4102						PP

SIZE CODE	-0050		-0125		-0250	
SIZE (NOM VOL mL)	50	125	125	250	250	250
NOM. BRIM CAP. (mL)	55	140	140	235	235	235
NOM. WEIGHT (gms)	13	31	31	55	55	55
	INCH	MM	INCH	MM	INCH	MM
A (NECK I.D.)	0.55 ± 0.03	14.0 ± 0.8	0.66 ± 0.03	16.8 ± 0.8	0.94 ± 0.03	23.9 ± 0.8
B (LIP O.D. AT TOP)	0.84 ± 0.02	21.3 ± 0.5	1.05 ± 0.03	26.7 ± 0.8	1.37 ± 0.03	34.8 ± 0.8
C (BODY O.D.)	1.94 ± 0.03	49.3 ± 0.8	2.67 ± 0.04	67.8 ± 1.0	3.75 ± 0.04	95.0 ± 1.0
D (HEIGHT)	3.10 ± 0.04	78.7 ± 1.0	4.51 ± 0.05	114.6 ± 1.0	5.73 ± 0.05	145.3 ± 1.3
W.T. (NOM. WALL THK)	0.07	1.8	0.07	1.8	0.10	2.5

SIZE CODE	-0500		-1000		-2000	
SIZE (NOM VOL mL)	500	1000	1000	2000	2000	2000
NOM. BRIM CAP. (mL)	610	1120	1120	2200	2200	2200
NOM. WEIGHT (gms)	100	207	207	285	285	285
	INCH	MM	INCH	MM	INCH	MM
A (NECK I.D.)	1.18 ± 0.03	30.0 ± 0.8	1.24 ± 0.04	31.5 ± 1.0	1.65 ± 0.03	41.9 ± 0.8
B (LIP O.D. AT TOP)	1.66 ± 0.03	42.2 ± 0.8	1.96 ± 0.03	49.8 ± 0.8	2.32 ± 0.04	58.9 ± 1.0
C (BODY O.D.)	4.20 ± 0.05	106.7 ± 1.3	5.51 ± 0.05	140.0 ± 1.3	6.40 ± 0.06	162.0 ± 1.5
D (HEIGHT)	7.33 ± 0.07	186.2 ± 1.8	8.44 ± 0.08	214.4 ± 2.0	10.67 ± 0.10	271.0 ± 2.3
W.T. (NOM. WALL THK)	0.09	2.3	0.17	4.3	0.17	4.3

- NOTES:
1. ALL DIMENSIONS ARE NOMINAL AND IN INCHES AND MILLIMETERS UNLESS OTHERWISE NOTED.
 2. THIS IS NOT A PRODUCTION DRAWING, BUT IS FOR INFORMATIONAL PURPOSES ONLY, AND IS SUBJECT TO CHANGE WITHOUT NOTICE.



SPECS ON BACK

NOT TO SCALE

ThermoFisher
SCIENTIFIC

Thermo Fisher Scientific
75 Ronorano Creek Drive
Rochester, NY 14625-2385, USA

MATERIAL	MCC	APP'D	PVC	DATE	0600
DESCRIPTION	CR'0	PVC	6/20/00	PSS 00-4102-XXXX	

ERLENMEYER FLASK

CONFIDENTIAL

THIS PRODUCT SPECIFICATION SHEET CONTAINS CONFIDENTIAL AND/OR PROPRIETARY INFORMATION AND IS TO BE USED ONLY FOR THE EXPRESSED PURPOSES AGREED UPON BY AN AUTHORIZED OFFICER OF THERMO FISHER SCIENTIFIC.