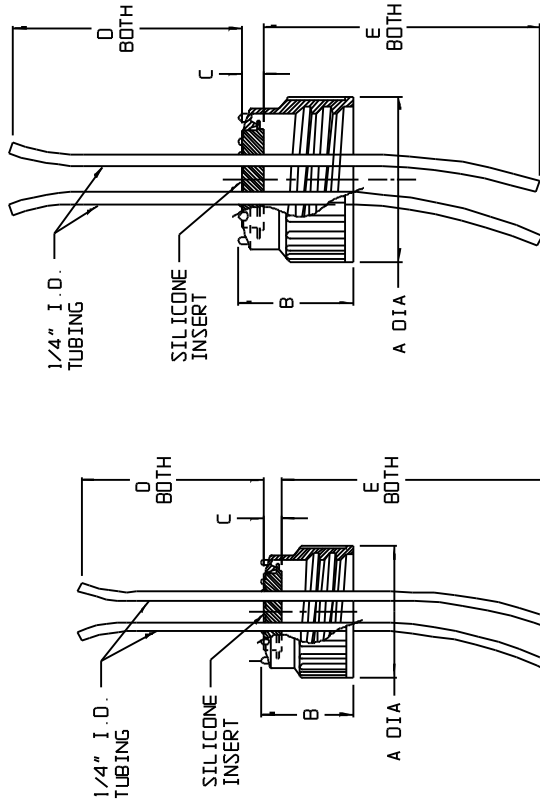


CATALOG NUMBER.....	2135-5302	2135-8302		
CLOSURE...	PP			
MATERIAL INSERT.....	SILICONE - PLATINUM CURED			
TUBING.....	SILICONE - PLATINUM CURED			
CLOSURE SIZE (mm)...	538	838		
TUBING SIZES.....	(2) 1/4 I.D.			
	INCH	MM		
A (CLOSURE DIA).....	2.58 ± 0.02	65.5 ± 0.5	4.00 ± 0.03	101.6 ± 0.8
B (CLOSURE HT).....	1.65 ± 0.02	41.9 ± 0.5	2.82 ± 0.03	71.6 ± 0.8
C (INSERT HT).....	0.67 ± 0.03	17.0 ± 0.8	0.91 ± 0.04	23.1 ± 1.0
D (TUBING LENGTH ABOVE INSERT).....	12	305	12	305
E (TUBING LENGTH BELOW INSERT).....	13	330	19	483
NOM WT. (gms).....	110		245	

NOTES:

1. ALL DIMENSIONS ARE NOMINAL AND IN INCHES AND MILLIMETERS UNLESS OTHERWISE NOTED.
2. THIS IS NOT A PRODUCTION DRAWING, BUT IS FOR INFORMATIONAL PURPOSES ONLY, AND IS SUBJECT TO CHANGE WITHOUT NOTICE.



CAT. NO. 2135-5302

CAT. NO. 2135-8302

SPECS ON BACK

NOT TO SCALE

ThermoFisher
SCIENTIFIC

Thermo Fisher Scientific
75 Ponderosa Creek Drive
Rochester, NY 14625-2385, USA

DATE	REV	DESCRIPTION	PART NO.	REV
HC	0501		PSS 00-2135-X302	0501
UC 0	PVC			
UC 0	PVC			

FLEXIBLE TOP WORKS™ SYSTEM
SCREW CLOSURES WITH
SILICONE INSERTS AND 2 PORTS

CONFIDENTIAL

THIS PRODUCT SPECIFICATION SHEET CONTAINS CONFIDENTIAL AND/OR PROPRIETARY INFORMATION AND IS TO BE USED ONLY FOR THE EXPRESSED PURPOSES AGREED UPON BY AN AUTHORIZED OFFICER OF THERMO FISHER SCIENTIFIC.