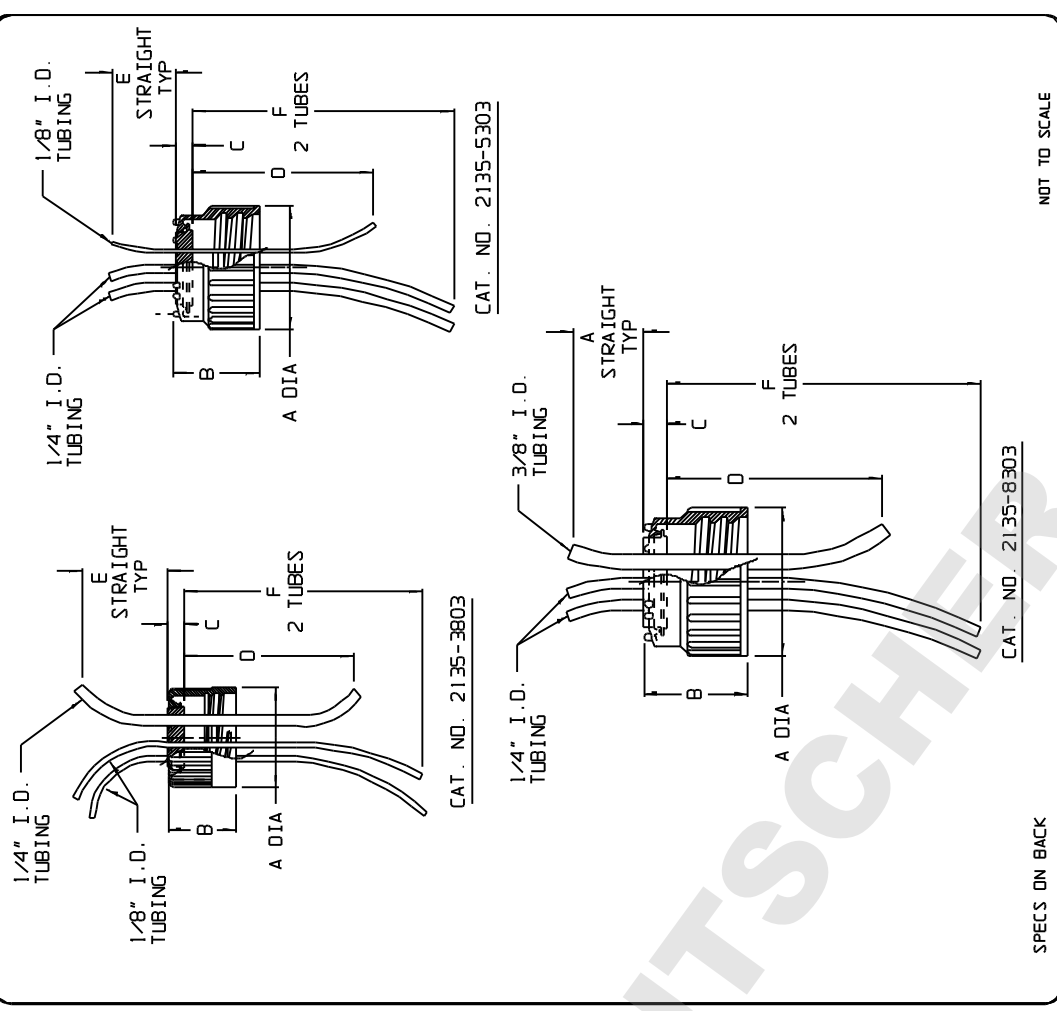


CATALOG NUMBER	2135-3803	2135-5303	2135-8303			
CLOSURE	PP					
MATERIAL INSERT	SILICONE - PLATINUM CURED					
TUBING	SILICONE - PLATINUM CURED					
CLOSURE SIZE (mm)	38-430					
TUBING SIZES (COMBINATION)	(2) 1/8 I.D. (1) 1/4 I.D.	(2) 1/4 I.D. (1) 1/8 I.D.	(2) 1/4 I.D. (1) 3/8 I.D.			
A DIA	INCH	MM	INCH			
B (CLOSURE HT)	1.66±.03	42.2±0.8	2.58±.02	65.5±0.5	4.00±.03	101.6±0.8
H (INSERT HT)	1.17±.03	29.7±0.8	1.65±.02	41.9±0.5	2.82±.03	71.6±0.8
TUBING LENGTHS (ABOVE INSERT)	12	305	12	305	12	305
TUBING LENGTHS (BELOW INSERT)	1/8 I.D.	16	406	6	152	—
	1/4 I.D.	6	152	20	508	864
	3/8 I.D.	—	—	—	—	152
NOM WT. (gms)	80		140		345	

- NOTES:
1. ALL DIMENSIONS ARE NOMINAL AND IN INCHES AND MILLIMETERS UNLESS OTHERWISE NOTED.
 2. THIS IS NOT A PRODUCTION DRAWING, BUT IS FOR INFORMATIONAL PURPOSES ONLY, AND IS SUBJECT TO CHANGE WITHOUT NOTICE.



CONFIDENTIAL

THIS PRODUCT SPECIFICATION SHEET CONTAINS CONFIDENTIAL AND/OR PROPRIETARY INFORMATION AND IS TO BE USED ONLY FOR THE EXPRESSED PURPOSES AGREED UPON BY AN AUTHORIZED OFFICER OF THERMO FISHER SCIENTIFIC.

ThermoFisher SCIENTIFIC

Thermo Fisher Scientific
75 Ponderosa Creek Drive
Rochester, NY 14625-2385, USA

NAME	NC	4490 PVC	PSS 00-2135-XX03	REV	0501
DATE	PVC	5/15/01			

DESCRIPTION: FLEXIBLE TOP WORKS™ SYSTEM SCREW CLOSURES WITH SILICONE INSERTS AND 3 PORTS