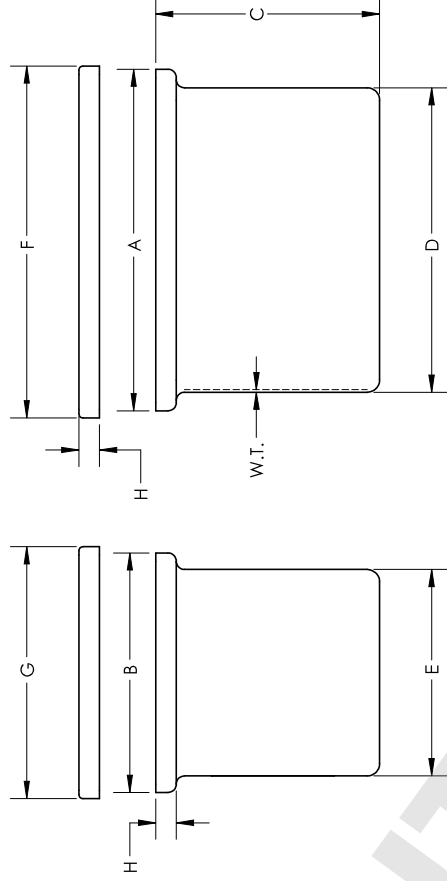


| CATALOG NUMBER..... | 14100-0002 | | 14100-0005 | | 14100-0010 | | 14100-0015 | |
|------------------------|------------|-----|------------|-----|------------|-----|------------|-----|
| | 2 | | 5 | | 10 | | 15 | |
| NOM. CAP (GAL)..... | LLDPE | | LLDPE | | LLDPE | | LLDPE | |
| MATERIAL..... | INCH | MM | INCH | MM | INCH | MM | INCH | MM |
| A (LENGTH)..... | 10 1/2 | 267 | 16 11/16 | 424 | 14 9/16 | 370 | 20 11/16 | 525 |
| B (WIDTH)..... | 10 1/2 | 267 | 12 11/16 | 322 | 14 9/16 | 370 | 14 1/2 | 368 |
| C (HT. W/O COVER)..... | 9 1/4 | 235 | 11 7/16 | 291 | 14 5/16 | 364 | 13 9/16 | 235 |
| D (LENGTH)..... | 8 3/16 | 208 | 14 1/2 | 368 | 12 1/4 | 311 | 18 7/16 | 344 |
| E (WIDTH)..... | 8 3/16 | 208 | 10 3/8 | 264 | 12 1/4 | 311 | 12 1/2 | 318 |
| F (LENGTH COVER)..... | 11 3/16 | 284 | 17 5/16 | 440 | 15 1/16 | 383 | 21 5/16 | 541 |
| G (WIDTH COVER)..... | 11 3/16 | 284 | 13 5/16 | 338 | 15 1/16 | 383 | 15 1/4 | 387 |
| H (HT. COVER)..... | 1 1/4 | 32 | 1 1/4 | 32 | 1 1/4 | 32 | 1 1/4 | 32 |
| W.T. (NOM. WALL THK.) | 5/32 | 4 | 5/32 | 4 | 5/32 | 4 | 5/32 | 4 |

| CATALOG NUMBER..... | 14100-0020 | | 14100-0040 | | 14100-0045 | | 14100-0065 | |
|------------------------|------------|-----|------------|-----|------------|-----|------------|-----|
| | 20 | | 40 | | 45 | | 65 | |
| NOM. CAP (GAL)..... | LLDPE | | LLDPE | | LLDPE | | LLDPE | |
| MATERIAL..... | INCH | MM | INCH | MM | INCH | MM | INCH | MM |
| A (LENGTH)..... | 20 11/16 | 525 | 26 5/8 | 676 | 26 5/8 | 676 | 26 11/16 | 678 |
| B (WIDTH)..... | 14 5/8 | 371 | 14 1/2 | 368 | 20 11/16 | 525 | 20 9/16 | 522 |
| C (HT. W/O COVER)..... | 19 13/16 | 503 | 13 1/4 | 337 | 19 9/16 | 483 | 25 3/16 | 640 |
| D (LENGTH)..... | 18 7/16 | 468 | 24 3/8 | 619 | 24 3/16 | 614 | 24 7/16 | 621 |
| E (WIDTH)..... | 12 1/2 | 318 | 12 1/2 | 318 | 18 7/16 | 468 | 18 5/16 | 465 |
| F (LENGTH COVER)..... | 21 5/16 | 541 | 27 1/8 | 689 | 27 7/16 | 697 | 27 7/16 | 697 |
| G (WIDTH COVER)..... | 15 1/4 | 387 | 15 1/8 | 384 | 21 1/8 | 537 | 21 1/8 | 537 |
| H (HT. COVER)..... | 1 1/4 | 32 | 1 1/4 | 32 | 1 1/4 | 32 | 1 1/4 | 32 |
| W.T. (NOM. WALL THK.) | 5/32 | 4 | 5/32 | 4 | 5/32 | 4 | 5/32 | 4 |

1. ALL DIMENSIONS ARE NOMINAL AND IN INCHES AND MILLIMETERS UNLESS OTHERWISE NOTED.
2. THIS IS NOT A PRODUCTION DRAWING, BUT IS FOR INFORMATIONAL PURPOSES ONLY, AND IS SUBJECT TO CHANGE WITHOUT NOTICE.



SPCS ON BACK

NOT TO SCALE

CONFIDENTIAL

THIS PRODUCT SPECIFICATION SHEET CONTAINS CONFIDENTIAL AND/OR PROPRIETARY INFORMATION AND IS TO BE USED ONLY FOR THE EXPRESSED PURPOSES AGREED UPON BY AN AUTHORIZED OFFICER OF THERMO FISHER SCIENTIFIC.

ThermoFisher
S C I E N T I F I C

Thermo Fisher Scientific
75 Panoroma Creek Drive
Rochester, NY 14625-2385, USA

NAME: FB PWC
DATE: KOW 3/27/14
DESCRIPTION:

PSS 14100-00XX
REV: 0314

TANKS WITH COVERS