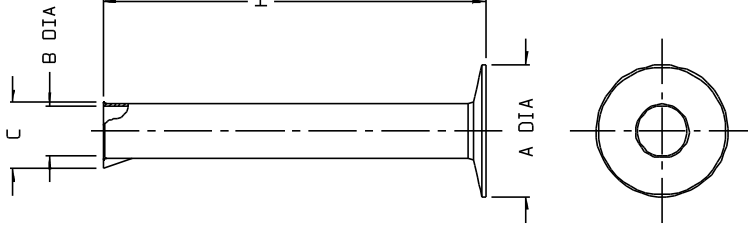


CATALOG NO.	NOMINAL CYLINDER CAPACITY (mL)								MATERIAL
	10	25	50	100	250	500	1000	1000	
003664	10	25	50	100	250	500	1000	1000	PP
003665	10	25	50	100	250	500	1000	1000	PMP

SIZE CODE.....	-0010	-0025	-0050	-0100	-0250
NOM. WT(gms)...	5	11	20	45	68
	IN.	MM	IN.	MM	IN.
A (BASE DIA)...	1.32	33.5	1.82	46.2	2.31
B (I.D.).....	0.53	13.5	0.75	19.1	0.91
C DIM.....	0.87	22.1	1.11	28.2	1.32
H (HEIGHT).....	3.85	97.8	5.53	140.5	7.00
	MM	MM	MM	MM	MM
	IN.	IN.	IN.	IN.	IN.
	MM	MM	MM	MM	MM

SIZE CODE.....	-0500	-1000
NOM. WT(gms)...	115	186
	IN.	MM
A (BASE DIA)...	4.68	118.9
B (I.D.).....	1.93	49.0
C DIM.....	2.51	63.8
H (HEIGHT).....	14.3	363.2
	IN.	MM
	MM	MM

- NOTES:
1. ALL DIMENSIONS ARE NOMINAL AND IN INCHES AND MILLIMETERS UNLESS OTHERWISE NOTED.
  2. THIS IS NOT A PRODUCTION DRAWING, BUT IS FOR INFORMATIONAL PURPOSES ONLY, AND IS SUBJECT TO CHANGE WITHOUT NOTICE.



SPECS ON BACK

NOT TO SCALE

**ThermoFisher**  
**SCIENTIFIC**

Thermo Fisher Scientific  
75 Pancromo Creek Drive  
Rochester, NY 14625-2385, USA

MAE MC<sup>2</sup>  
CR'0 P/C

APP'0 P/C  
9/2/03

PSS 00-366X-XXX2

REV 0903

ECONOMY GRADUATED CYLINDERS

CONFIDENTIAL

THIS PRODUCT SPECIFICATION SHEET CONTAINS CONFIDENTIAL AND/OR PROPRIETARY INFORMATION AND IS TO BE USED ONLY FOR THE EXPRESSED PURPOSES AGREED UPON BY AN AUTHORIZED OFFICER OF THERMO FISHER SCIENTIFIC.