

version 1.0



# 2023-2024 BROCHURE

*Gel Documentation System*



# Imaging System SmartView Pro Imager

- Standalone gel doc system with high-quality monochrome CCD
- Exchangeable emission filters provide for instant visualization
- Intuitive 10.4" interface with color touch-screen
- Zoom-able lens for proper picture size
- Movable platform for gel excision with UV-protection shield
- Automatic UV shut off mechanism
- Optional trans white light and blue light plates



SmartView Pro 2300



System setup

Default setting



UV light protection warning

Batch file management



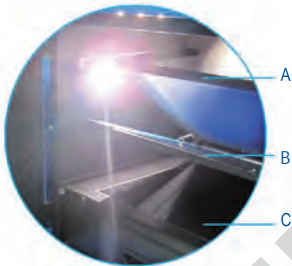
Blue light plate (UVCI-2300)

White light plate

Viewing via window

Viewing via screen

Viewing window



UVCI-2300

- Flip-style:
- A. White light plate
  - B. Blue light plate
  - C. Drawer-type UV transilluminator



Control Interface

|                     |   |
|---------------------|---|
| Model               | SmartView Pro 2300  |
| Cat. No.            | UVCI-2300   |
| Camera              | 1/1.8" interline UXGA monochrome progressive 2.0MP CCD                          |
| Pixels Size         | 4.4µm x 4.4µm   |
| Lens (Camera)       | F1.2, 12.5 – 75mm (with one +1 close-up lens), 6X zoom lens, manual             |
| Camera Video Output | 12bit   |
| Filter (Camera)     | Optical EtBr Filter / Optical SYBR Green Filter / Orange Amber Filter           |
| *Ordered Separately |   |
| Image Storage       | Built-in 14GB Memory (3000 tiff images storage) and USB flash                   |
| Cabinet             | Pull out, sliding transilluminator  |
| Field Of View (WxL) | Maximum field of view 10.2"x8.3" (260x210mm)                                    |
| Dimension (WxLxH)   | Approx. 16.1"x16.7"x35.8" (410x425x910mm)                                       |
| Weight              | Approx. 62.8lbs. (28.5kg)   |
| Display             | 10.4" color touch screen, 800x600   |
| Viewing Window      | Built-in UV viewing window  |
| Window Filter       | Amber Filter embedded in viewing window (580nm)                                 |
| Light Source        | Built-in drawer type UV Transilluminator 312(302)nm<br>built-in LED white light |
| Optional Accessory  | White Light Plate (power built-in)<br>Blue light plate (power built-in) 470nm   |
| Saved Image         | Max. 16bit  |
| Grayscale           | 12bit, 0-4095 gray levels   |
| Safety              | CE  |
| Rated Voltage       | 100-240V~, 50/60Hz  |

\*Please visit our website at [www.majorsci.com](http://www.majorsci.com) for more product selection and detailed information.

\*MS 1D Analysis Software (MBE-IMG-SW) is included in UVCI-2300 for image analysis only.

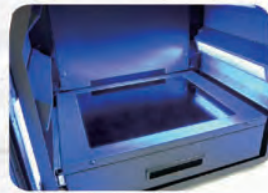
\*Filters are necessary part for Gel Documentation System.

\*All filters have to be ordered separately and discuss with local dealer before order.

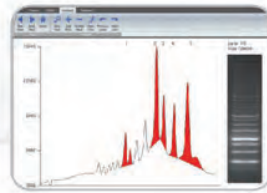
SmartView Pro Imager, CMOS



FC CE



Epi-blue light for optional light source



Gel image analysis software included for SmartView Pro



White light plate for protein analysis



- Ergonomic design for easy viewing and operating
- Built-in mechanism for easy gel cutting
- Multi-image file saving selection: BMP, TIFF, JPEG and PNG
- Blue light technology for operation and environment safe lab experiment
- White light plate installation integration available (optional accessory)



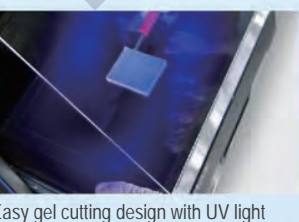
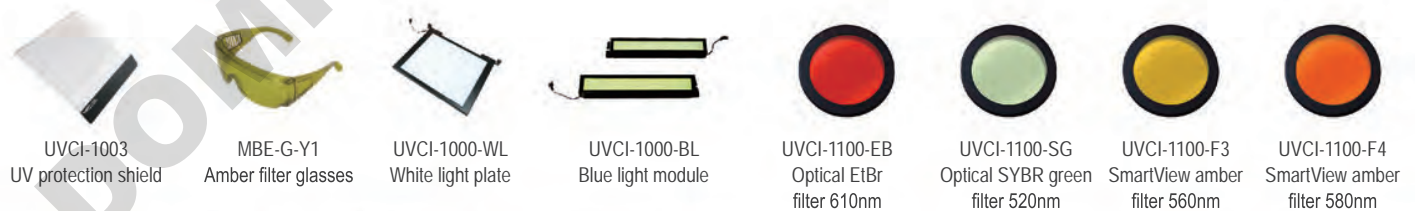
|                                   |   |
|-----------------------------------|---|
| Cat. No.                          | UVCI-1100 (Standard version)                        |
| Camera                            | 1/2.5" 5.0MP pixel monochrome sensor                |
| Camera video output / Saved image | 12bit   |
| Max. aperture                     | f/1.2   |
| Built-in UV transilluminator      | Yes, 312nm (optional white or blue light available) |
| Image storage                     | PC only   |
| Safety device                     | Safety door switch                                  |
| Features                          | Image capture software included                     |
|                                   | USB connects to a PC                                |
|                                   | Connect to PC; PC required                          |

\* iPad and PC not included.

\* MS 1D Analysis Software (MBE-IMG-SW) is included in UVCI-1100 for image capture and analysis.

\* Filters are necessary part for Gel Documentation System.

\* All filters have to be ordered separately and discuss with local dealer before order.



Easy gel cutting design with UV light



Pull out UV transilluminator



USB connection

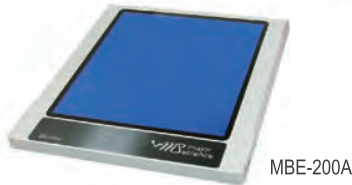


Viewing window

Digimage System, DI-01

- Effective Pixels Approx. 24.2 megapixels (Total Pixels Approx. 25.8 megapixels)
- High resolution 8" TFT screen
- Digital control panel
- Compact chamber and lightweight
- Can be operated PC free
- Inner white light LED at two sides
- Safety door switch
- Optional gel analysis software package available
- Universal rated voltage: 100-240V~

\*Could be bundled with MBE-200A.



SmartView Simple Imager System MUV-IMG series



\*PC / Tablet is not included.

White light plate  
 DI-WLA3 (297x400mm)  
 DI-WLA4 (210x297mm)  
 DI-WLA6 (105x150mm)



| Cat. No.                | MUV-IMG-CA                            | DI-01 | DI-HD |
|-------------------------|---------------------------------------|-------|-------|
| Camera / Lens           | 24.2MP digital camera, Wi-Fi function |       | N/A   |
| Display / Control panel | Digital camera                        |       |       |
| Max. aperture           | f/3.5-6.3 (IS STM Lens)               |       | N/A   |

\*All images are for reference only, actual products might differ from the pictures above.  
 \*Filters are necessary part for Gel Documentation System.  
 \*All filters have to be ordered separately and discuss with local dealer before order.

Transilluminator

SmartView Transilluminator / UV Transilluminator

- 312nm UV for gel observation; 254nm UV for irradiate samples; 365nm UV for gel cutting/imaging and avoid photonicking
- \*High performance UV light model also available.



FC CE  
 UV Transilluminator MUV series



| Cat. No.               | MUVB-111  | MUVB-121  | MUVB-122         | MUV26                   | MUV21   |
|------------------------|---|---|------------------|-------------------------|---------|
| Wavelength             | single 312nm  | dual 254 / 312nm  | dual 254 / 365nm | 254 / 312 (302) / 365nm |         |
| Filter size (mm) (WxL) | 210x210   |   |                  | 260x210                 | 210x210 |
| Light source           | 8W x 5 tubes, with built-in UV light and 470nm Epi blue light       | 8W x 9 tubes, with built-in UV light and 470nm Epi blue light |                  | 8W x 6 tubes            |         |
| Intensity switch       | High (100%) / Low (70%) intensity switch for single wavelength mode |   |                  |                         |         |

\*Please visit our website at [www.majorsci.com](http://www.majorsci.com) for more product selection and detailed information.



[www.majorsci.com](http://www.majorsci.com)

[info@majorsci.com](mailto:info@majorsci.com)



#### Taiwan Headquarters

##### Headquarters:

No. 156, Sec. 1, Guoji Rd., Taoyuan Dist.,  
Taoyuan City 33061, Taiwan  
T/+886-3-3762878  
F/+886-3-3761310

##### Factory:

No.19, Ln. 207, Huakang St. Bade Dist.,  
Taoyuan City 33464 Taiwan  
T/ +886-3-3623319  
F/ +886-3-3623133  
Email : [info@majorsci.com](mailto:info@majorsci.com)

#### Shanghai Office

Room 612, International business exhibition center,  
9300 Hunan Road, Pudong, Shanghai, China  
National toll-free No.:400-823-9177  
T/ +86-21-50795277  
F/ +86-21-50795277

#### US Office

19959 Sea Gull Way  
Saratoga, CA 95070  
U.S.A.  
T/ +1-408-366-9866  
F/ +1-408-446-1107

#### India Office

D. No. 12-13-99, Satguru Apts. Extn.  
Street. No. 3, Lane No.1, Tarnaka  
Secunderabad – 500 017. India  
T/ +91-40-27001515  
T/ +91-40-27001586

