

# Elite Dry Bath Incubator

## EL series

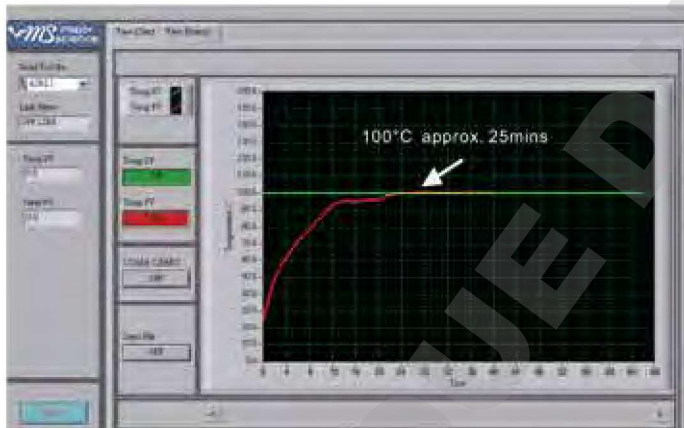
The Elite Dry Bath Incubator comes in single or dual block modes along with a comprehensive set of interchangeable blocks. It is designed for a variety of applications, including restriction digest, denaturing DNA, BUN, melting agar, coagulation studies, hybridization and hot start thermo-cycled reaction. Elite Dry Bath is recognized as the finest, fastest heating and smallest foot print dry bath incubator. In addition, the aluminum blocks can be removed for the use of a mini water bath or a bead bath. The temperature setpoint can be set in increments of 0.1°C from 5°C above ambient to 150°C. Optional PC control software allows the dry bath incubator to perform real time data recording through a PC.



FC CE

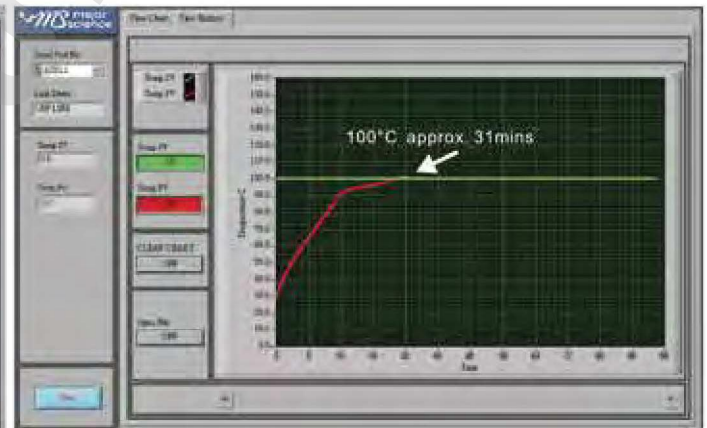


EL-01



■ Temp. set value: 100°C  
 ■ Initial temp. value: 25°C  
 Block model: MD-B1.5  
 Process time: Approx. 25mins

EL-02



■ Temp. set value: 100°C  
 ■ Initial temp. value: 30°C  
 Block model: MD-B1.5  
 Process time: Approx. 31mins

### Features

- Digital microprocessor controller confers performance and precise control
- Broad temperature control range & guaranteed uniformity
- Excellent heating rate
- Large LCD screen for instant observation
- User temperature calibration
- Can be used as a water bath or bead bath
- Molded aluminum alloy chamber
- Optional PC control software available



Can be used as a bead bath

## Specification



with beads



with water



with block

Cat. No.	EL-01 (Single Block)	EL-02 (Dual Block)
Display	LCD	
Power	125W	200W
Dimension (WxLxH)	Approx. 6"x5.9"x5.3" (152x150x135mm)	Approx. 6"x9.1"x5.3" (152x230x135mm)
Controller	Digital microprocess controller	
Heating Chamber	Molded Waterproof aluminum alloy coated with PTFE	
Temperature Control Range	5°C above ambient to 150°C	
Temperature Increment	0.1°C	
Temperature Uniformity	± 0.2°C at 37°C	
Temperature Accuracy	± 0.2°C at 37°C	
Temperature Calibration	Yes	
Timer	99 (hr): 59 (min) / Continuous	
Safety	Leak proof heating chamber	
	Over temperature protection	
	SSR failure detection	
Operating Temperature	Ambient to 40°C	
Special Feature	Used as water bath or bead bath incubator	
Block Material	Aluminum alloy	
Block Type	Standard and customized type are available	
PC Connection	RS232	
Rated Voltage	110V / 220V~	
Weight	Approx. 4.6lb (2.1kg)	Approx. 6.1lb (2.8kg)
<b>Blocks</b>		
Block Material	Aluminum alloy	
Dimension (WxLxH)	Approx. 3.1"x4.1"x2" (79x104x50mm) for standard type	
Block Lifter Well	Yes	
Thermometer Well	Yes (except microplate blocks)	

## Ordering Information

Cat. No.	Product Description
EL-01-110/220	Elite Dry Bath Incubator ( One block unit ); without block
EL-02-110/220	Elite Dry Bath Incubator ( Dual block unit ); without block

## Accessories

Cat. No.	Product Description
MD-RS232	RS 232 cable
MD-PCSW	Function control software package
MD-PCSW-R	Function control software package; including a RS232 cable
MD-MP01-S	For microplate; titerplate (Plain Block for Single Block unit only)
MD-MP01-D	For microplate; titerplate (Dual Block unit only)
MD-MP02-S	For 96 wells deep microplate or PCR plate ( for Single Block unit only)
MD-MP02-D	For 96 wells deep microplate or PCR plate ( for Dual Block unit only)
MD-B0.2	For 0.2ml tube, 64 wells (or 0.2ml PCR strip tube for 8 wells x 8)
MD-B0.5	For 0.5ml tube, 20 wells
MD-B1.5	For 1.5ml tube, 20 wells
MD-B0.5+1.5	Combination: for 0.5ml tube, 12 wells; and for 1.5ml tube, 12 wells (on the same side)
MD-B0.5/1.5	One side for 1.5 or 2.0ml tube, 20 wells and another side for 0.5ml tube, 30 wells (on the opposite side)
MD-B13	Well size 13mm, 20 wells
MD-B17	For 15ml centrifuge tube, 12 wells
MD-B20	Well size 20mm, 12 wells
MD-B25	Well size 25mm, 6 wells
MD-B29	For 50ml centrifuge tube, 4 wells

\* For a complete list of accessories, please refer to [Page 84-87](#)