



# Test Verification of Conformity

Verification Number: 180700409SHA-V1

On the basis of the referenced test report(s), sample(s) tested of the below product have been found to comply with the standards harmonized with the directives listed on this verification at the time the tests were carried out. Other standards and Directives may be relevant to the product. This verification is part of the full test report(s) and should be read in conjunction with it <them>.

Once compliance with all product relevant  mark directives are verified, including any relevant e.g. risk assessment and production control, the manufacturer may indicate compliance by signing a Declaration of Conformity themselves and applying the mark to products identical to the tested sample(s).


Applicant Name & Address:	Shanghai Mapada Instruments Co., Ltd. Building D-10, No.261, Shanghai Road, Shanghai 201611, P.R.China.
Manufacturer Site Name & Address	Same as applicant
Product Description:	Spectrophotometer
Ratings & Principle	100-240V,50/60Hz
Characteristics:	
Models/Type References:	P1,P2,P3,P4,P5,P6,PV1,PV2,PV3,PV4,M4,M5,M6,P7,P8,P9,M7,M8,M9
Brand Name(s):	
Standard(s)/Directive(s):	EN61326-1:2013 EN61326-2-1: 2013 the EMC directive (2014/30/EU)
Verification Issuing Office Name & Address:	Intertek Testing Services Shanghai Building No.86, 1198 Qinzhou Road (North), Caohejing Development Zone, Shanghai 200233, China
Test Report Number(s):	180700409SHA-001

  
**Signature**  
**Name: Jonny Jing**  
**Position: Manager**  
**Date: Jan 14, 2019**

This Verification is for the exclusive use of Intertek's client and is provided pursuant to the agreement between Intertek and its Client. Intertek's responsibility and liability are limited to the terms and conditions of the agreement. Intertek assumes no liability to any party, other than to the Client in accordance with the agreement, for any loss, expense or damage occasioned by the use of this Verification. Only the Client is authorized to permit copying or distribution of this Verification. Any use of the Intertek name or one of its marks for the sale or advertisement of the tested material, product or service must first be approved in writing by Intertek. The observations and test/inspection results referenced in this Verification are relevant only to the sample tested/inspected. This Verification by itself does not imply that the material, product, or service is or has ever been under an Intertek certification program.

## Test Verification of Conformity

On the basis of the referenced test report(s), sample(s) of the below product have been found to comply with the harmonized standards and Directives listed on this verification at the time the tests were carried out. Other standards and Directives may be relevant to the product.

Once all product relevant  mark directives are verified in compliance, the manufacturer may indicate compliance by signing a Declaration of Conformity themselves and applying the mark to product identical to the test sample(s) if the product complies with all relevant CE mark Directives requirements.

**Applicant Name & Address** : Shanghai Mapada Instruments Co., Ltd  
Building D-10, No.261, Shanghai Road, Shanghai 201611,  
P.R.China

**Manufacturing site Name & Address** : Same as applicant

**Product(s) Tested** : Spectrophotometer

**Ratings and principal characteristics** : 100-240V,50/60Hz, CATII

**Model(s)** : P1,P2,P3,P4,P5,P6,PV1,PV2,PV3,PV4,M4,M5,M6,P7,P8,P9,M7,M8,M9

**Brand name** : 

**Relevant Standard(s) / Specification(s) / Directive(s)** : EN 61010-1:2010 (Third Edition)  
The Low Voltage Directive 2014/35/EU

**Verification Issuing Office Name & Address** : Intertek Testing Services Shanghai  
Building No.86, 1198 Qinzhou Road (North), Shanghai  
200233, China

**Verification Number** : 180700408SHA-V1

**Report Number(s)** : 180700408SHA-001

**NOTE 1: This verification is part of the full test report(s) and should be read in conjunction with it.**

This Verification is for the exclusive use of Intertek's Client and is provided pursuant to the agreement between Intertek and its Client. Intertek's responsibility and liability are limited to the terms and conditions of the agreement. Intertek assumes no liability to any party, other than to the Client in accordance with the agreement, for any loss, expense or damage occasioned by the use of this Verification. Only the Client is authorized to copy or distribute this Verification. Any use of the Intertek name or one of its marks for the sale or advertisement of the tested material, product or service must first be approved in writing by Intertek. The observations and test results referenced from this Verification are relevant only to the sample tested. This Verification by itself does not imply that the material, product, or service is or has ever been under an Intertek certification program.

  
Signature

**Name: Jonny Jing**  
**Position: Manager**  
**Date: 4 Jan 2019**

**XRF Screening and chemical confirmation test report**

**Number: 181002034SHA-001**

Applicant: Shanghai Mapada Instruments Co., Ltd.  
Building 10, No.629, Ronghua Road, Shanghai, P.R.China

Date: Jan. 14, 2019

Sample description:

One (1) submitted sample said to be:

Item Name : Spectrophotometer  
Tested Model : P9  
Reference Model : P1,P2,P3,P4,P5,P6,P7,P8, PV1,PV2,PV3,PV4,M4,M5,M6,M7,M8,M9  
Brand Name : MAPADA  
Manufacturer : Shanghai Mapada Instruments Co., Ltd.  
Building 10, No.629, Ronghua Road, Shanghai, P.R.China

Tests conducted:

As requested by the applicant, for details refer to attached page(s).

Conclusion:

<u>Tested sample</u>	<u>Standard</u>	<u>Result</u>
Submitted sample	Screening by XRF spectroscopy and chemical confirmation test for RoHS Directive 2011/65/EU.	Pass

To be continued

Authorized by:  
For Intertek testing services Ltd., Shanghai



Jonny Jing  
Operation Manager



Tests Conducted

Determination of levels of regulated substances in electrotechnical products, elements of Cadmium (Cd), Lead (Pb), Mercury (Hg), Chromium (Cr) and Bromine (Br) contents were measured by XRF Spectroscopy and chemical confirmation test for RoHS restricted substances.

(A) Results:

Part No.	Tested Components	Refer information	Restricted Substance	XRF Result	Chemical Confirmation Result	Conclusion on RoHS
1	BODY COVER					
1-1	FIXED COMPONENT					
1-1-1	SCREW (SILVER METAL)	/	Cd	P	/	PASS
			Pb	P	/	
			Hg	P	/	
			Cr	X	Cr <sup>6+</sup> : Negative	
			Br	NA	/	
1-1-2	WASHER (BLACK PLASTIC)	/	Cd	P	/	PASS
			Pb	P	/	
			Hg	P	/	
			Cr	P	/	
			Br	P	/	
1-1-3	STOPPER (WHITE PLASTIC)	/	Cd	P	/	PASS
			Pb	P	/	
			Hg	P	/	
			Cr	P	/	
			Br	P	/	
1-1-4	WASHER (SILVER METAL)	/	Cd	P	/	PASS
			Pb	P	/	
			Hg	P	/	
			Cr	P	/	
			Br	NA	/	
1-1-5	CIRCLIP (BLACK METAL)	/	Cd	P	/	PASS
			Pb	X	Pb=12530ppm(#1)	
			Hg	P	/	
			Cr	P	/	
			Br	NA	/	

To be continued



Tests Conducted

Part No.	Tested Components	Refer information	Restricted Substance	XRF Result	Chemical Confirmation Result	Conclusion on RoHS
1-1-6	SUPPORT (BLACK PLASTIC)	/	Cd	P	/	PASS
			Pb	P	/	
			Hg	P	/	
			Cr	P	/	
			Br	P	/	
1-2	SAMPLE COVER					
1-2-1	SAMPLE COVER (BLACK NONMETAL WITH WHITE COATING)	/	Cd	P	/	PASS
			Pb	P	/	
			Hg	P	/	
			Cr	P	/	
			Br	P	/	
1-2-2	FOAM (BLACK NONMETAL)	/	Cd	P	/	PASS
			Pb	P	/	
			Hg	P	/	
			Cr	P	/	
			Br	P	/	
1-2-3	GLUE (BLACK NONMETAL)	/	Cd	P	/	PASS
			Pb	P	/	
			Hg	P	/	
			Cr	P	/	
			Br	P	/	
1-3	BODY COVER (BLACK PLASTIC WITH GREY COATING)	/	Cd	P	/	PASS
			Pb	P	/	
			Hg	P	/	
			Cr	P	/	
			Br	P	/	
1-4	UPPER COVER (BLACK NONMETAL WITH WHITE AND RED COATING)	/	Cd	P	/	PASS
			Pb	P	/	
			Hg	P	/	
			Cr	P	/	
			Br	P	/	
1-5	FIXED COMPONENT					

\*\*\*\*\*

To be continued



Tests Conducted

Part No.	Tested Components	Refer information	Restricted Substance	XRF Result	Chemical Confirmation Result	Conclusion on RoHS
1-5-1	SUPPORT (BLACK PLASTIC)	/	Cd	P	/	PASS
			Pb	X	Pb=42ppm	
			Hg	P	/	
			Cr	P	/	
			Br	P	/	
1-5-2	SCREW (SILVER METAL)	/	Cd	P	/	PASS
			Pb	P	/	
			Hg	P	/	
			Cr	P	/	
			Br	NA	/	
1-5-3	SCREW (SILVER METAL)	/	Cd	P	/	PASS
			Pb	P	/	
			Hg	P	/	
			Cr	P	/	
			Br	NA	/	
1-5-4	SCREW (SILVER METAL)	/	Cd	P	/	PASS
			Pb	P	/	
			Hg	P	/	
			Cr	P	/	
			Br	NA	/	
1-5-5	SCREW (SILVER METAL)	/	Cd	P	/	PASS
			Pb	P	/	
			Hg	P	/	
			Cr	X	Cr <sup>6+</sup> : Negative	
			Br	NA	/	
1-5-6	WASHER (RED PLASTIC)	/	Cd	P	/	PASS
			Pb	P	/	
			Hg	P	/	
			Cr	P	/	
			Br	P	/	

\*\*\*\*\*  
To be continued



Tests Conducted

Part No.	Tested Components	Refer information	Restricted Substance	XRF Result	Chemical Confirmation Result	Conclusion on RoHS
1-5-7	CIRCLIP (GREY PLASTIC)	/	Cd	P	/	PASS
			Pb	P	/	
			Hg	P	/	
			Cr	P	/	
			Br	P	/	
1-6	SWITCH					
1-6-1	COVER					
1-6-1-1	COVER (BLUE PLASTIC)	/	Cd	P	/	PASS
			Pb	P	/	
			Hg	P	/	
			Cr	P	/	
			Br	P	/	
1-6-1-2	CAP (GREY PLASTIC)	/	Cd	P	/	PASS
			Pb	P	/	
			Hg	P	/	
			Cr	P	/	
			Br	P	/	
1-6-1-3	BUTTON (BLACK PLASTIC)	/	Cd	P	/	PASS
			Pb	P	/	
			Hg	P	/	
			Cr	P	/	
			Br	P	/	
1-6-1-4	BASE (WHITE PLASTIC)	/	Cd	P	/	PASS
			Pb	P	/	
			Hg	P	/	
			Cr	P	/	
			Br	P	/	
1-6-1-5	SUPPORT (GREY PLASTIC)	/	Cd	P	/	PASS
			Pb	P	/	
			Hg	P	/	
			Cr	P	/	
			Br	P	/	

\*\*\*\*\*

To be continued



Tests Conducted

Part No.	Tested Components	Refer information	Restricted Substance	XRF Result	Chemical Confirmation Result	Conclusion on RoHS
1-6-1-6	RING (BLACK PLASTIC)	/	Cd	P	/	PASS
			Pb	P	/	
			Hg	P	/	
			Cr	P	/	
			Br	X	PBBs=ND PBDEs=ND	
1-6-2	SWITCH					
1-6-2-1	CONDUCTING STRIP (SILVER METAL)	/	Cd	X	Cd=4071ppm (#2)	PASS
			Pb	P	/	
			Hg	P	/	
			Cr	X	Cr <sup>6+</sup> : Negative	
			Br	NA	/	
1-6-2-2	CLAMP (SILVER METAL)	/	Cd	P	/	PASS
			Pb	P	/	
			Hg	P	/	
			Cr	X	Cr <sup>6+</sup> : Negative	
			Br	NA	/	
1-6-2-3	SPRING (SILVER METAL)	/	Cd	P	/	PASS
			Pb	P	/	
			Hg	P	/	
			Cr	X	Cr <sup>6+</sup> : Negative	
			Br	NA	/	
1-6-2-4	CONTACTED SHEET (SILVER METAL)	/	Cd	P	/	PASS
			Pb	P	/	
			Hg	P	/	
			Cr	P	/	
			Br	NA	/	
1-6-2-5	CONTACTED SHEET (SILVER METAL)	/	Cd	P	/	PASS
			Pb	P	/	
			Hg	P	/	
			Cr	P	/	
			Br	NA	/	

To be continued





Tests Conducted

Part No.	Tested Components	Refer information	Restricted Substance	XRF Result	Chemical Confirmation Result	Conclusion on RoHS
1-6-2-6	TUBE (BLACK PLASTIC)	/	Cd	P	/	PASS
			Pb	P	/	
			Hg	P	/	
			Cr	P	/	
			Br	P	/	
1-6-2-7	COVER (BLUE PLASTIC)	/	Cd	P	/	PASS
			Pb	P	/	
			Hg	P	/	
			Cr	P	/	
			Br	X	PBBs=ND PBDEs=ND	
1-6-2-8	BUTTON (WHITE PLASTIC)	/	Cd	P	/	PASS
			Pb	P	/	
			Hg	P	/	
			Cr	P	/	
			Br	P	/	
1-6-2-9	CONTACTED SHEET (SILVER METAL)	/	Cd	P	/	PASS
			Pb	P	/	
			Hg	P	/	
			Cr	P	/	
			Br	NA	/	
1-6-3	LED					
1-6-3-1	SLEEVE (RED PLASTIC)	/	Cd	P	/	PASS
			Pb	P	/	
			Hg	P	/	
			Cr	P	/	
			Br	X	PBBs=ND PBDEs=ND	
1-6-3-2	RESISTOR	/	Cd	P	/	PASS
			Pb	P	/	
			Hg	P	/	
			Cr	P	/	
			Br	P	/	

To be continued



Tests Conducted

Part No.	Tested Components	Refer information	Restricted Substance	XRF Result	Chemical Confirmation Result	Conclusion on RoHS
1-6-3-3	LED	/	Cd	P	/	PASS
			Pb	P	/	
			Hg	P	/	
			Cr	P	/	
			Br	P	/	
1-6-3-4	COVER (WHITE PLASTIC)	/	Cd	P	/	PASS
			Pb	P	/	
			Hg	P	/	
			Cr	P	/	
			Br	P	/	
1-6-4	COVER (BLUE PLASTIC)	/	Cd	P	/	PASS
			Pb	P	/	
			Hg	P	/	
			Cr	P	/	
			Br	X	PBBs=ND PBDEs=ND	
1-7	PCB					
1-7-1	SET					
1-7-1-1	SUPPORT (WHITE PLASTIC)	/	Cd	P	/	PASS
			Pb	P	/	
			Hg	P	/	
			Cr	P	/	
			Br	X	PBBs=ND PBDEs=ND	
1-7-1-2	COVER (SILVER METAL)	/	Cd	P	/	PASS
			Pb	P	/	
			Hg	P	/	
			Cr	P	/	
			Br	NA	/	
1-7-1-3	PIN (SILVER METAL)	/	Cd	P	/	PASS
			Pb	P	/	
			Hg	P	/	
			Cr	P	/	
			Br	NA	/	

\*\*\*\*\*

To be continued



Tests Conducted

Part No.	Tested Components	Refer information	Restricted Substance	XRF Result	Chemical Confirmation Result	Conclusion on RoHS
1-7-2	PLUG					
1-7-2-1	COVER (BLACK PLASTIC)	/	Cd	P	/	PASS
			Pb	P	/	
			Hg	P	/	
			Cr	P	/	
			Br	X	PBBs=ND PBDEs=ND	
1-7-2-2	PIN (SILVER METAL)	/	Cd	P	/	PASS
			Pb	P	/	
			Hg	P	/	
			Cr	P	/	
			Br	NA	/	
1-7-3	CAPACITOR	/	Cd	P	/	PASS
			Pb	P	/	
			Hg	P	/	
			Cr	P	/	
			Br	P	/	
1-7-4	SOLDER (SILVER METAL)	/	Cd	P	/	PASS
			Pb	P	/	
			Hg	P	/	
			Cr	P	/	
			Br	NA	/	
1-7-5	PCB	/	Cd	P	/	PASS
			Pb	P	/	
			Hg	P	/	
			Cr	P	/	
			Br	X	PBBs=ND PBDEs=ND	
1-8	SCREEN					
1-8-1	SCREEN (GREEN NONMETAL)	/	Cd	P	/	PASS
			Pb	P	/	
			Hg	P	/	
			Cr	P	/	
			Br	P	/	

\*\*\*\*\*

To be continued



Tests Conducted

Part No.	Tested Components	Refer information	Restricted Substance	XRF Result	Chemical Confirmation Result	Conclusion on RoHS
1-8-2	SCREEN (GREEN NONMETAL)	/	Cd	P	/	PASS
			Pb	P	/	
			Hg	P	/	
			Cr	P	/	
			Br	P	/	
1-8-3	FILM (SILVER NONMETAL)	/	Cd	P	/	PASS
			Pb	P	/	
			Hg	P	/	
			Cr	P	/	
			Br	P	/	
1-8-4	FILM (TRANSPARENT NONMETAL)	/	Cd	P	/	PASS
			Pb	P	/	
			Hg	P	/	
			Cr	P	/	
			Br	P	/	
1-8-5	FILM (WHITE PLASTIC)	/	Cd	P	/	PASS
			Pb	P	/	
			Hg	P	/	
			Cr	P	/	
			Br	P	/	
1-8-6	FILM (WHITE PLASTIC)	/	Cd	P	/	PASS
			Pb	P	/	
			Hg	P	/	
			Cr	P	/	
			Br	P	/	
1-8-7	FILM (SILVER PLASTIC)	/	Cd	P	/	PASS
			Pb	P	/	
			Hg	P	/	
			Cr	P	/	
			Br	P	/	

To be continued



Tests Conducted

Part No.	Tested Components	Refer information	Restricted Substance	XRF Result	Chemical Confirmation Result	Conclusion on RoHS
1-8-8	FILM (SILVER PLASTIC)	/	Cd	P	/	PASS
			Pb	P	/	
			Hg	P	/	
			Cr	P	/	
			Br	P	/	
1-8-9	TAPE (BLUE PLASTIC)	/	Cd	P	/	PASS
			Pb	P	/	
			Hg	P	/	
			Cr	P	/	
			Br	P	/	
1-8-10	COVER (TRANSPARENT NONMETAL)	/	Cd	P	/	PASS
			Pb	P	/	
			Hg	P	/	
			Cr	P	/	
			Br	P	/	
1-8-11	BASE (SILVER METAL)	/	Cd	P	/	PASS
			Pb	P	/	
			Hg	P	/	
			Cr	X	Cr <sup>6+</sup> : Negative	
			Br	NA	/	
1-8-12	SCREEN (TRANSPARENT NONMETAL)	/	Cd	P	/	PASS
			Pb	P	/	
			Hg	P	/	
			Cr	P	/	
			Br	P	/	
1-8-13	TAPE (BLACK PLASTIC)	/	Cd	P	/	PASS
			Pb	P	/	
			Hg	P	/	
			Cr	P	/	
			Br	P	/	
1-8-14	PCB					

To be continued



Tests Conducted

Part No.	Tested Components	Refer information	Restricted Substance	XRF Result	Chemical Confirmation Result	Conclusion on RoHS
1-8-14-1	GLUE (WHITE NONMETAL)	/	Cd	P	/	PASS
			Pb	P	/	
			Hg	P	/	
			Cr	P	/	
			Br	P	/	
1-8-14-2	STICKER	/	Cd	P	/	PASS
			Pb	P	/	
			Hg	P	/	
			Cr	P	/	
			Br	P	/	
1-8-14-3	TAPE (YELLOW NONMETAL)	/	Cd	P	/	PASS
			Pb	P	/	
			Hg	P	/	
			Cr	P	/	
			Br	P	/	
1-8-14-4	PCB	/	Cd	P	/	PASS
			Pb	P	/	
			Hg	P	/	
			Cr	P	/	
			Br	P	/	
1-8-14-5	CAPACITOR	/	Cd	P	/	PASS
			Pb	P	/	
			Hg	P	/	
			Cr	P	/	
			Br	P	/	
1-8-14-6	PLUG					
1-8-14-6-1	COVER (WHITE PLASTIC)	/	Cd	P	/	PASS
			Pb	P	/	
			Hg	P	/	
			Cr	P	/	
			Br	P	/	

To be continued



Tests Conducted

Part No.	Tested Components	Refer information	Restricted Substance	XRF Result	Chemical Confirmation Result	Conclusion on RoHS
1-8-14-6-2	PIN (SILVER META)	/	Cd	P	/	PASS
			Pb	P	/	
			Hg	P	/	
			Cr	P	/	
			Br	NA	/	
1-8-14-7	IC	/	Cd	P	/	PASS
			Pb	P	/	
			Hg	P	/	
			Cr	P	/	
			Br	P	/	
1-8-14-8	TRIODE	/	Cd	P	/	PASS
			Pb	P	/	
			Hg	P	/	
			Cr	P	/	
			Br	P	/	
1-8-14-9	IC	/	Cd	P	/	PASS
			Pb	P	/	
			Hg	P	/	
			Cr	P	/	
			Br	P	/	
1-8-14-10	BASE (SILVER METAL)	/	Cd	P	/	PASS
			Pb	P	/	
			Hg	P	/	
			Cr	X	Cr <sup>6+</sup> : Negative	
			Br	NA	/	
1-9	SCREEN					
1-9-1	LED STREET	/	Cd	P	/	PASS
			Pb	P	/	
			Hg	P	/	
			Cr	P	/	
			Br	P	/	

To be continued



Tests Conducted

Part No.	Tested Components	Refer information	Restricted Substance	XRF Result	Chemical Confirmation Result	Conclusion on RoHS
1-9-2	TAPE (WHITE NONMETAL)	/	Cd	P	/	PASS
			Pb	P	/	
			Hg	P	/	
			Cr	P	/	
			Br	P	/	
1-9-3	TAPE (TRANSPARENT NONMETAL)	/	Cd	P	/	PASS
			Pb	P	/	
			Hg	P	/	
			Cr	P	/	
			Br	P	/	
1-9-4	LED	/	Cd	P	/	PASS
			Pb	P	/	
			Hg	P	/	
			Cr	P	/	
			Br	P	/	
1-9-5	FRAME	/	Cd	P	/	PASS
			Pb	P	/	
			Hg	P	/	
			Cr	P	/	
			Br	P	/	
1-9-6	PCB					
1-9-6-1	PCB	/	Cd	P	/	PASS
			Pb	P	/	
			Hg	P	/	
			Cr	P	/	
			Br	P	/	
1-9-6-2	IC	/	Cd	P	/	PASS
			Pb	P	/	
			Hg	P	/	
			Cr	P	/	
			Br	P	/	

To be continued





Tests Conducted

Part No.	Tested Components	Refer information	Restricted Substance	XRF Result	Chemical Confirmation Result	Conclusion on RoHS
1-9-6-3	IC	/	Cd	P	/	PASS
			Pb	P	/	
			Hg	P	/	
			Cr	P	/	
			Br	P	/	
1-9-6-4	RESISTOR	/	Cd	P	/	PASS
			Pb	P	/	
			Hg	P	/	
			Cr	X	Cr <sup>6+</sup> : Negative	
			Br	P	/	
1-9-6-5	CAPACITOR	/	Cd	P	/	PASS
			Pb	P	/	
			Hg	P	/	
			Cr	P	/	
			Br	P	/	
1-9-6-6	SET					
1-9-6-6-1	PIN (COPPER METAL)	/	Cd	P	/	PASS
			Pb	P	/	
			Hg	P	/	
			Cr	P	/	
			Br	NA	/	
1-9-6-6-2	COVER (WHITE PLASTIC)	/	Cd	P	/	PASS
			Pb	P	/	
			Hg	P	/	
			Cr	P	/	
			Br	P	/	
1-9-6-6-3	SUPPORT (BLACK PLASTIC)	/	Cd	P	/	PASS
			Pb	P	/	
			Hg	P	/	
			Cr	P	/	
			Br	P	/	
1-9-6-7	SIGNAL STREET					

\*\*\*\*\*

To be continued



Tests Conducted

Part No.	Tested Components	Refer information	Restricted Substance	XRF Result	Chemical Confirmation Result	Conclusion on RoHS
1-9-6-7-1	PIN (SILVER METAL)	/	Cd	P	/	PASS
			Pb	P	/	
			Hg	P	/	
			Cr	P	/	
			Br	NA	/	
1-9-6-7-2	TAPE (YELLOW PLASTIC)	/	Cd	P	/	PASS
			Pb	P	/	
			Hg	P	/	
			Cr	P	/	
			Br	P	/	
1-9-6-7-3	SIGNAL STREET	/	Cd	P	/	PASS
			Pb	P	/	
			Hg	P	/	
			Cr	P	/	
			Br	P	/	
1-10	FILM (TRANSPARENT PLASTIC)	/	Cd	P	/	PASS
			Pb	P	/	
			Hg	P	/	
			Cr	P	/	
			Br	P	/	
1-11	SUPPORT					
1-11-1	COVER (BLACK PLASTIC)	/	Cd	P	/	PASS
			Pb	P	/	
			Hg	P	/	
			Cr	P	/	
			Br	P	/	
1-11-2	COLUMN (COPPER METAL)	/	Cd	P	/	PASS
			Pb	X	Pb=33470ppm(#1)	
			Hg	P	/	
			Cr	P	/	
			Br	NA	/	
1-12	PCB					

\*\*\*\*\*

To be continued



Tests Conducted

Part No.	Tested Components	Refer information	Restricted Substance	XRF Result	Chemical Confirmation Result	Conclusion on RoHS
1-12-1	COVER (WHITE PLASTIC)	/	Cd	P	/	PASS
			Pb	P	/	
			Hg	P	/	
			Cr	P	/	
			Br	P	/	
1-12-2	TAPE (WHITE PLASTIC)	/	Cd	P	/	PASS
			Pb	P	/	
			Hg	P	/	
			Cr	P	/	
			Br	X	PBBs=ND PBDEs=ND	
1-12-3	SET					
1-12-3-1	SUPPORT (BLACK PLASTIC)	/	Cd	P	/	PASS
			Pb	P	/	
			Hg	P	/	
			Cr	P	/	
			Br	P	/	
1-12-3-2	PIN (SILVER METAL)	/	Cd	P	/	PASS
			Pb	X	Pb=33270ppm(#1)	
			Hg	P	/	
			Cr	P	/	
			Br	NA	/	
1-12-3-3	COVER (WHITE PLASTIC)	/	Cd	P	/	PASS
			Pb	P	/	
			Hg	P	/	
			Cr	P	/	
			Br	P	/	
1-12-3-4	PIN (SILVER METAL)	/	Cd	X	Cd=ND	PASS
			Pb	X	Pb=35360ppm(#1)	
			Hg	P	/	
			Cr	P	/	
			Br	NA	/	

To be continued



Tests Conducted

Part No.	Tested Components	Refer information	Restricted Substance	XRF Result	Chemical Confirmation Result	Conclusion on RoHS
1-12-4	RESISTOR	/	Cd	P	/	PASS
			Pb	X	Pb=45860ppm(#3)	
			Hg	P	/	
			Cr	P	/	
			Br	P	/	
1-12-5	CAPACITOR	/	Cd	P	/	PASS
			Pb	X	Pb=12530 ppm(#3)	
			Hg	P	/	
			Cr	P	/	
			Br	P	/	
1-12-6	DIODE	/	Cd	P	/	PASS
			Pb	P	/	
			Hg	P	/	
			Cr	P	/	
			Br	P	/	
1-12-7	TRIODE	/	Cd	P	/	PASS
			Pb	X	Pb=26610ppm(#3)	
			Hg	P	/	
			Cr	P	/	
			Br	P	/	
1-12-8	IC	/	Cd	P	/	PASS
			Pb	X	Pb=1249 ppm(#3)	
			Hg	P	/	
			Cr	P	/	
			Br	P	/	
1-12-9	INDUCTANCE					
1-12-9-1	WIRE (COPPER METAL)	/	Cd	P	/	PASS
			Pb	P	/	
			Hg	P	/	
			Cr	P	/	
			Br	NA	/	

To be continued



Tests Conducted

Part No.	Tested Components	Refer information	Restricted Substance	XRF Result	Chemical Confirmation Result	Conclusion on RoHS
1-12-9-2	IRON CORE (BLACK METAL)	/	Cd	P	/	PASS
			Pb	P	/	
			Hg	P	/	
			Cr	P	/	
			Br	NA	/	
1-13	SOLDER (SILVER METAL)	/	Cd	P	/	PASS
			Pb	P	/	
			Hg	P	/	
			Cr	P	/	
			Br	NA	/	
1-14	PCB	/	Cd	P	/	PASS
			Pb	P	/	
			Hg	P	/	
			Cr	P	/	
			Br	X	PBBs=ND PBDEs=ND	
2	CONTROL PANEL					
2-1	CLOTH (GREY NONMEAL)	/	Cd	P	/	PASS
			Pb	P	/	
			Hg	P	/	
			Cr	P	/	
			Br	P	/	
2-2	COVER (WHITE PLASTIC)	/	Cd	P	/	PASS
			Pb	P	/	
			Hg	P	/	
			Cr	P	/	
			Br	X	PBBs=ND PBDEs=ND	
2-3	PLUG					
2-3-1	SUPPORT (BLACK PLASTIC)	/	Cd	P	/	PASS
			Pb	P	/	
			Hg	P	/	
			Cr	P	/	
			Br	X	PBBs=ND PBDEs=ND	

\*\*\*\*\*

To be continued



Tests Conducted

Part No.	Tested Components	Refer information	Restricted Substance	XRF Result	Chemical Confirmation Result	Conclusion on RoHS
2-3-2	PIN (COPPER METAL)	/	Cd	P	/	PASS
			Pb	P	/	
			Hg	P	/	
			Cr	P	/	
			Br	NA	/	
2-4	SET					
2-4-1	COVER (SILVER METAL)	/	Cd	P	/	PASS
			Pb	P	/	
			Hg	P	/	
			Cr	P	/	
			Br	NA	/	
2-4-2	SUPPORT (BLACK PLASTIC)	/	Cd	P	/	PASS
			Pb	P	/	
			Hg	P	/	
			Cr	P	/	
			Br	X	PBBs=ND PBDEs=ND	
2-4-3	COVER (SILVER METAL)	/	Cd	P	/	PASS
			Pb	P	/	
			Hg	P	/	
			Cr	X	Cr <sup>6+</sup> : Negative	
			Br	NA	/	
2-4-4	PIN (SILVER METAL)	/	Cd	P	/	PASS
			Pb	P	/	
			Hg	P	/	
			Cr	P	/	
			Br	NA	/	
2-5	SET					
2-5-1	COVER (BLACK PLASTIC)	/	Cd	P	/	PASS
			Pb	P	/	
			Hg	P	/	
			Cr	P	/	
			Br	P	/	

\*\*\*\*\*

To be continued



Tests Conducted

Part No.	Tested Components	Refer information	Restricted Substance	XRF Result	Chemical Confirmation Result	Conclusion on RoHS
2-5-2	COVER (BLACK PLASTIC)	/	Cd	P	/	PASS
			Pb	P	/	
			Hg	P	/	
			Cr	P	/	
			Br	P	/	
2-5-3	SHELL (BLUE PLASTIC)	/	Cd	P	/	PASS
			Pb	P	/	
			Hg	P	/	
			Cr	P	/	
			Br	P	/	
2-6	PILOT LAMP					
2-6-1	COVER (SILVER METAL)	/	Cd	P	/	PASS
			Pb	P	/	
			Hg	P	/	
			Cr	P	/	
			Br	NA	/	
2-6-2	COVER (BLACK PLASTIC)	/	Cd	P	/	PASS
			Pb	P	/	
			Hg	P	/	
			Cr	P	/	
			Br	P	/	
2-6-3	LED	/	Cd	P	/	PASS
			Pb	P	/	
			Hg	P	/	
			Cr	P	/	
			Br	P	/	
2-6-4	LED	/	Cd	P	/	PASS
			Pb	P	/	
			Hg	P	/	
			Cr	P	/	
			Br	P	/	

To be continued



Tests Conducted

Part No.	Tested Components	Refer information	Restricted Substance	XRF Result	Chemical Confirmation Result	Conclusion on RoHS
2-6-5	PIN (COPPER METAL)	/	Cd	P	/	PASS
			Pb	P	/	
			Hg	P	/	
			Cr	P	/	
			Br	NA	/	
2-7	JACK SOCKET					
2-7-1	SCREW (SILVER METAL)	/	Cd	P	/	PASS
			Pb	P	/	
			Hg	P	/	
			Cr	P	/	
			Br	NA	/	
2-7-2	NUT (SILVER METAL)	/	Cd	P	/	PASS
			Pb	X	Pb=16180ppm(#1)	
			Hg	P	/	
			Cr	P	/	
			Br	NA	/	
2-7-3	WASHER (SILVER METAL)	/	Cd	P	/	PASS
			Pb	P	/	
			Hg	P	/	
			Cr	P	/	
			Br	NA	/	
2-7-4	COVER (SILVER METAL)	/	Cd	P	/	PASS
			Pb	P	/	
			Hg	P	/	
			Cr	P	/	
			Br	NA	/	
2-7-5	COVER (BLUE PLASTIC)	/	Cd	P	/	PASS
			Pb	P	/	
			Hg	P	/	
			Cr	P	/	
			Br	X	PBBs=ND PBDEs=ND	

To be continued





Tests Conducted

Part No.	Tested Components	Refer information	Restricted Substance	XRF Result	Chemical Confirmation Result	Conclusion on RoHS
2-7-6	CIRCLIP (SILVER METAL)	/	Cd	P	/	PASS
			Pb	P	/	
			Hg	P	/	
			Cr	P	/	
			Br	NA	/	
2-7-7	COVER (BLUE PLASTIC)	/	Cd	P	/	PASS
			Pb	P	/	
			Hg	P	/	
			Cr	P	/	
			Br	X	PBBs=ND PBDEs=ND	
2-8	PLUG					
2-8-1	COVER (SILVER METAL)	/	Cd	P	/	PASS
			Pb	P	/	
			Hg	P	/	
			Cr	P	/	
			Br	NA	/	
2-8-2	COVER (BLACK PLASTIC)	/	Cd	P	/	PASS
			Pb	P	/	
			Hg	P	/	
			Cr	P	/	
			Br	P	/	
2-9	SET (BLACK PLASTIC)	/	Cd	P	/	PASS
			Pb	P	/	
			Hg	P	/	
			Cr	P	/	
			Br	X	PBBs=ND PBDEs=ND	
2-10	SUPPORT (WHITE PLASTIC)	/	Cd	P	/	PASS
			Pb	P	/	
			Hg	P	/	
			Cr	P	/	
			Br	X	PBBs=ND PBDEs=ND	

To be continued



Tests Conducted

Part No.	Tested Components	Refer information	Restricted Substance	XRF Result	Chemical Confirmation Result	Conclusion on RoHS
2-11	COVER (BLACK PLASTIC)	/	Cd	P	/	PASS
			Pb	P	/	
			Hg	P	/	
			Cr	P	/	
			Br	P	/	
2-12	JACK SOCKET					
2-12-1	COVER (PURPLE PLASTIC)	/	Cd	P	/	PASS
			Pb	P	/	
			Hg	P	/	
			Cr	P	/	
			Br	X	PBBs=ND PBDEs=ND	
2-12-2	PIN (SILVER METAL)	/	Cd	P	/	PASS
			Pb	P	/	
			Hg	P	/	
			Cr	X	Cr <sup>6+</sup> : Negative	
			Br	NA	/	
2-12-3	CONTACTED SHEET (SILVER METAL)	/	Cd	P	/	PASS
			Pb	P	/	
			Hg	P	/	
			Cr	P	/	
			Br	NA	/	
2-13	SWITCH					
2-13-1	COVER (BLACK PLASTIC)	/	Cd	P	/	PASS
			Pb	P	/	
			Hg	P	/	
			Cr	P	/	
			Br	P	/	
2-13-2	SWITCH (WHITE PLASTIC)	/	Cd	P	/	PASS
			Pb	P	/	
			Hg	P	/	
			Cr	P	/	
			Br	X	PBBs=ND PBDEs=ND	

\*\*\*\*\*

To be continued



Tests Conducted

Part No.	Tested Components	Refer information	Restricted Substance	XRF Result	Chemical Confirmation Result	Conclusion on RoHS
2-13-3	COVER (BLACK PLASTIC)	/	Cd	P	/	PASS
			Pb	P	/	
			Hg	P	/	
			Cr	P	/	
			Br	P	/	
2-14	INDICATOR LIGHT					
2-14-1	COVER (BLACK PLASTIC)	/	Cd	P	/	PASS
			Pb	P	/	
			Hg	P	/	
			Cr	P	/	
			Br	P	/	
2-14-2	LED	/	Cd	P	/	PASS
			Pb	P	/	
			Hg	P	/	
			Cr	P	/	
			Br	P	/	
2-15	SWITCH					
2-15-1	COVER (SILVER PLASTIC)	/	Cd	P	/	PASS
			Pb	P	/	
			Hg	P	/	
			Cr	P	/	
			Br	P	/	
2-15-2	SUPPORT (GREY PLASTIC)	/	Cd	P	/	PASS
			Pb	P	/	
			Hg	P	/	
			Cr	P	/	
			Br	P	/	
2-15-3	CONTACTED DOT (SILVER METAL)	/	Cd	P	/	PASS
			Pb	P	/	
			Hg	P	/	
			Cr	X	Cr <sup>6+</sup> : Negative	
			Br	NA	/	

\*\*\*\*\*

To be continued



Tests Conducted

Part No.	Tested Components	Refer information	Restricted Substance	XRF Result	Chemical Confirmation Result	Conclusion on RoHS
2-15-4	FUSE	/	Cd	P	/	PASS
			Pb	P	/	
			Hg	P	/	
			Cr	P	/	
			Br	P	/	
2-15-5	COVER (BLACK PLASTIC)	/	Cd	P	/	PASS
			Pb	P	/	
			Hg	P	/	
			Cr	P	/	
			Br	P	/	
2-16	COVER					
2-16-1	COVER (SILVER METAL)	/	Cd	P	/	PASS
			Pb	P	/	
			Hg	P	/	
			Cr	X	Cr <sup>6+</sup> : Negative	
			Br	NA	/	
2-16-2	BASE (BLACK PLASTIC)	/	Cd	P	/	PASS
			Pb	P	/	
			Hg	P	/	
			Cr	P	/	
			Br	P	/	
2-17	CAPACITOR	/	Cd	P	/	PASS
			Pb	P	/	
			Hg	P	/	
			Cr	P	/	
			Br	P	/	
2-18	PLUG (BLACK PLASTIC)	/	Cd	P	/	PASS
			Pb	P	/	
			Hg	P	/	
			Cr	P	/	
			Br	X	PBBs=ND PBDEs=ND	

To be continued



Tests Conducted

Part No.	Tested Components	Refer information	Restricted Substance	XRF Result	Chemical Confirmation Result	Conclusion on RoHS
2-19	PLUG (BLACK PLASTIC)	/	Cd	P	/	PASS
			Pb	P	/	
			Hg	P	/	
			Cr	P	/	
			Br	X	PBBs=ND PBDEs=ND	
2-20	SHELL (YELLOW PLASTIC)	/	Cd	P	/	PASS
			Pb	P	/	
			Hg	P	/	
			Cr	P	/	
			Br	P	/	
2-21	PCB					
2-21-1	STICKER	/	Cd	P	/	PASS
			Pb	P	/	
			Hg	P	/	
			Cr	P	/	
			Br	P	/	
2-21-2	IC	/	Cd	P	/	PASS
			Pb	P	/	
			Hg	P	/	
			Cr	P	/	
			Br	P	/	
2-21-3	IC	/	Cd	P	/	PASS
			Pb	P	/	
			Hg	P	/	
			Cr	P	/	
			Br	P	/	
2-21-4	DIODE	/	Cd	P	/	PASS
			Pb	P	/	
			Hg	P	/	
			Cr	P	/	
			Br	P	/	

To be continued



Tests Conducted

Part No.	Tested Components	Refer information	Restricted Substance	XRF Result	Chemical Confirmation Result	Conclusion on RoHS
2-21-5	RESISTOR	/	Cd	P	/	PASS
			Pb	P	/	
			Hg	P	/	
			Cr	P	/	
			Br	P	/	
2-21-6	PCB	/	Cd	P	/	PASS
			Pb	P	/	
			Hg	P	/	
			Cr	P	/	
			Br	X	PBBs=ND PBDEs=ND	
2-21-7	SET (BLACK PLASTIC)	/	Cd	P	/	PASS
			Pb	P	/	
			Hg	P	/	
			Cr	P	/	
			Br	P	/	
2-22	PCB					
2-22-1	STICKER	/	Cd	P	/	PASS
			Pb	P	/	
			Hg	P	/	
			Cr	P	/	
			Br	P	/	
2-22-2	IC	/	Cd	P	/	PASS
			Pb	P	/	
			Hg	P	/	
			Cr	P	/	
			Br	P	/	
2-22-3	IC	/	Cd	P	/	PASS
			Pb	P	/	
			Hg	P	/	
			Cr	P	/	
			Br	P	/	

To be continued



Tests Conducted

Part No.	Tested Components	Refer information	Restricted Substance	XRF Result	Chemical Confirmation Result	Conclusion on RoHS
2-22-4	RESISTOR	/	Cd	P	/	PASS
			Pb	P	/	
			Hg	P	/	
			Cr	P	/	
			Br	P	/	
2-22-5	PCB	/	Cd	P	/	PASS
			Pb	X	Pb=ND	
			Hg	P	/	
			Cr	P	/	
			Br	P	/	
2-22-6	FRAME (SILVER METAL)	/	Cd	P	/	PASS
			Pb	P	/	
			Hg	P	/	
			Cr	P	/	
			Br	NA	/	
2-22-7	PLUG (WHITE PLASTIC)	/	Cd	P	/	PASS
			Pb	P	/	
			Hg	P	/	
			Cr	P	/	
			Br	P	/	
2-23	IC	/	Cd	P	/	PASS
			Pb	P	/	
			Hg	P	/	
			Cr	P	/	
			Br	P	/	
2-24	IC	/	Cd	P	/	PASS
			Pb	P	/	
			Hg	P	/	
			Cr	P	/	
			Br	P	/	

\*\*\*\*\*  
To be continued



Tests Conducted

Part No.	Tested Components	Refer information	Restricted Substance	XRF Result	Chemical Confirmation Result	Conclusion on RoHS
2-25	IC	/	Cd	P	/	PASS
			Pb	P	/	
			Hg	P	/	
			Cr	P	/	
			Br	P	/	
2-26	IC	/	Cd	P	/	PASS
			Pb	P	/	
			Hg	P	/	
			Cr	P	/	
			Br	P	/	
2-27	IC	/	Cd	P	/	PASS
			Pb	P	/	
			Hg	P	/	
			Cr	P	/	
			Br	P	/	
2-28	RESISTOR	/	Cd	P	/	PASS
			Pb	P	/	
			Hg	P	/	
			Cr	P	/	
			Br	P	/	
2-29	CAPACITOR	/	Cd	P	/	PASS
			Pb	P	/	
			Hg	P	/	
			Cr	P	/	
			Br	P	/	
2-30	IC	/	Cd	P	/	PASS
			Pb	P	/	
			Hg	P	/	
			Cr	P	/	
			Br	P	/	

\*\*\*\*\*  
To be continued





Tests Conducted

Part No.	Tested Components	Refer information	Restricted Substance	XRF Result	Chemical Confirmation Result	Conclusion on RoHS
2-31	CAPACITOR	/	Cd	P	/	PASS
			Pb	P	/	
			Hg	P	/	
			Cr	P	/	
			Br	P	/	
2-32	BUZZLE					
2-32-1	COVER (BLACK PLASTIC)	/	Cd	P	/	PASS
			Pb	P	/	
			Hg	P	/	
			Cr	P	/	
			Br	X	PBBs=ND PBDEs=ND	
2-32-2	CONTACTED DOT (SILVER METAL)	/	Cd	P	/	PASS
			Pb	P	/	
			Hg	P	/	
			Cr	X	Cr <sup>6+</sup> : Negative	
			Br	NA	/	
2-32-3	RING (BLACK PLASTIC)	/	Cd	P	/	PASS
			Pb	P	/	
			Hg	P	/	
			Cr	P	/	
			Br	P	/	
2-32-4	BASE (SILVER METAL)	/	Cd	P	/	PASS
			Pb	P	/	
			Hg	P	/	
			Cr	P	/	
			Br	NA	/	
2-32-5	GLUE (BLACK NONMETAL)	/	Cd	P	/	PASS
			Pb	P	/	
			Hg	P	/	
			Cr	P	/	
			Br	X	PBBs=ND PBDEs=ND	

To be continued



Tests Conducted

Part No.	Tested Components	Refer information	Restricted Substance	XRF Result	Chemical Confirmation Result	Conclusion on RoHS
2-33	DIODE	/	Cd	P	/	PASS
			Pb	P	/	
			Hg	P	/	
			Cr	P	/	
			Br	P	/	
2-34	CAPACITOR	/	Cd	P	/	PASS
			Pb	P	/	
			Hg	P	/	
			Cr	P	/	
			Br	P	/	
2-35	TRIODE	/	Cd	P	/	PASS
			Pb	P	/	
			Hg	P	/	
			Cr	P	/	
			Br	P	/	
2-36	IC	/	Cd	P	/	PASS
			Pb	P	/	
			Hg	P	/	
			Cr	P	/	
			Br	P	/	
2-37	IC	/	Cd	P	/	PASS
			Pb	P	/	
			Hg	P	/	
			Cr	P	/	
			Br	P	/	
2-38	PCB	/	Cd	P	/	PASS
			Pb	P	/	
			Hg	P	/	
			Cr	P	/	
			Br	X	PBBs=ND PBDEs=ND	
2-39	PCB					

\*\*\*\*\*

To be continued



Tests Conducted

Part No.	Tested Components	Refer information	Restricted Substance	XRF Result	Chemical Confirmation Result	Conclusion on RoHS
2-39-1	COVER (BLACK PLASTIC)	/	Cd	P	/	PASS
			Pb	P	/	
			Hg	P	/	
			Cr	P	/	
			Br	X	PBBs=ND PBDEs=ND	
2-39-2	PCB	/	Cd	P	/	PASS
			Pb	P	/	
			Hg	P	/	
			Cr	P	/	
			Br	X	PBBs=ND PBDEs=ND	
2-40	COVER (BLACK PLASTIC)	/	Cd	P	/	PASS
			Pb	P	/	
			Hg	P	/	
			Cr	P	/	
			Br	P	/	
2-41	COLUMN (COPPER METAL)	/	Cd	P	/	PASS
			Pb	X	Pb=17890ppm(#1)	
			Hg	P	/	
			Cr	P	/	
			Br	NA	/	
2-42	COLUMN (COPPER METAL)	/	Cd	P	/	PASS
			Pb	X	Pb=15610ppm(#1)	
			Hg	P	/	
			Cr	P	/	
			Br	NA	/	
2-43	COLUMN (WHITE PLASTIC)	/	Cd	P	/	PASS
			Pb	P	/	
			Hg	P	/	
			Cr	P	/	
			Br	P	/	

\*\*\*\*\*  
To be continued



Tests Conducted

Part No.	Tested Components	Refer information	Restricted Substance	XRF Result	Chemical Confirmation Result	Conclusion on RoHS
2-44	SCREW (SILVER METAL)	/	Cd	P	/	PASS
			Pb	P	/	
			Hg	P	/	
			Cr	X	Cr <sup>6+</sup> : Negative	
			Br	NA	/	
2-45	SCREW (SILVER METAL)	/	Cd	P	/	PASS
			Pb	P	/	
			Hg	P	/	
			Cr	P	/	
			Br	P	/	
2-46	SCREW (SILVER METAL)	/	Cd	P	/	PASS
			Pb	P	/	
			Hg	P	/	
			Cr	P	/	
			Br	NA	/	
2-47	SCREW (SILVER METAL)	/	Cd	P	/	PASS
			Pb	P	/	
			Hg	P	/	
			Cr	P	/	
			Br	P	/	
2-48	SCREW (SILVER METAL)	/	Cd	P	/	PASS
			Pb	P	/	
			Hg	P	/	
			Cr	P	/	
			Br	NA	/	
2-49	WASHER (SILVER METAL)	/	Cd	P	/	PASS
			Pb	P	/	
			Hg	P	/	
			Cr	P	/	
			Br	NA	/	

\*\*\*\*\*  
To be continued



Tests Conducted

Part No.	Tested Components	Refer information	Restricted Substance	XRF Result	Chemical Confirmation Result	Conclusion on RoHS
2-50	WASHER (RED PLASTIC)	/	Cd	P	/	PASS
			Pb	P	/	
			Hg	P	/	
			Cr	P	/	
			Br	P	/	
2-51	NUT (SILVER METAL)	/	Cd	P	/	PASS
			Pb	P	/	
			Hg	P	/	
			Cr	X	Cr <sup>6+</sup> : Negative	
			Br	NA	/	
2-52	BASE (BLACK METAL)	/	Cd	P	/	PASS
			Pb	P	/	
			Hg	P	/	
			Cr	P	/	
			Br	NA	/	
3	FAN					
3-1	SUPPORT (BLACK METAL)	/	Cd	P	/	PASS
			Pb	P	/	
			Hg	P	/	
			Cr	P	/	
			Br	NA	/	
3-2	COVER (BLACK PLASTIC)	/	Cd	P	/	PASS
			Pb	P	/	
			Hg	P	/	
			Cr	P	/	
			Br	X	PBBs=ND PBDEs=ND	
3-3	PCB					
3-3-1	IC	/	Cd	P	/	PASS
			Pb	P	/	
			Hg	P	/	
			Cr	P	/	
			Br	P	/	

\*\*\*\*\*

To be continued



Tests Conducted

Part No.	Tested Components	Refer information	Restricted Substance	XRF Result	Chemical Confirmation Result	Conclusion on RoHS
3-3-2	PCB	/	Cd	P	/	PASS
			Pb	P	/	
			Hg	P	/	
			Cr	P	/	
			Br	P	/	
3-4	WASHER (BLACK PLASTIC)	/	Cd	P	/	PASS
			Pb	P	/	
			Hg	P	/	
			Cr	P	/	
			Br	X	PBBs=ND PBDEs=ND	
3-5	WASHER (WHITE PLASTIC)	/	Cd	P	/	PASS
			Pb	P	/	
			Hg	P	/	
			Cr	P	/	
			Br	P	/	
3-6	WIRE (COPPER METAL)	/	Cd	P	/	PASS
			Pb	P	/	
			Hg	P	/	
			Cr	P	/	
			Br	NA	/	
3-7	COVER (BLACK PLASTIC)	/	Cd	P	/	PASS
			Pb	P	/	
			Hg	P	/	
			Cr	P	/	
			Br	X	PBBs=ND PBDEs=ND	
3-8	SILICON STEEL SHEET (SILVER METAL)	/	Cd	P	/	PASS
			Pb	P	/	
			Hg	P	/	
			Cr	X	Cr <sup>6+</sup> : Negative	
			Br	NA	/	

To be continued



Tests Conducted

Part No.	Tested Components	Refer information	Restricted Substance	XRF Result	Chemical Confirmation Result	Conclusion on RoHS
3-9	COVER (BLACK PLASTIC)	/	Cd	P	/	PASS
			Pb	P	/	
			Hg	P	/	
			Cr	P	/	
			Br	X	PBBs=ND PBDEs=ND	
3-10	AXIS (SILVER METAL)	/	Cd	P	/	PASS
			Pb	P	/	
			Hg	P	/	
			Cr	X	Cr <sup>6+</sup> : Negative	
			Br	NA	/	
3-11	TAPE (BLACK PLASTIC)	/	Cd	P	/	PASS
			Pb	P	/	
			Hg	P	/	
			Cr	P	/	
			Br	P	/	
3-12	FAN (BLACK PLASTIC)	/	Cd	P	/	PASS
			Pb	P	/	
			Hg	P	/	
			Cr	P	/	
			Br	X	PBBs=ND PBDEs=ND	
4	POWER SOURCE					
4-1	TRIODE	/	Cd	P	/	PASS
			Pb	P	/	
			Hg	P	/	
			Cr	P	/	
			Br	X	PBBs=ND PBDEs=ND	
4-2	CAPACITOR					
4-2-1	SHELL (BLACK PLASTIC)	/	Cd	P	/	PASS
			Pb	P	/	
			Hg	P	/	
			Cr	P	/	
			Br	P	/	

\*\*\*\*\*

To be continued



Tests Conducted

Part No.	Tested Components	Refer information	Restricted Substance	XRF Result	Chemical Confirmation Result	Conclusion on RoHS
4-2-2	INNER SHELL (SILVER METAL)	/	Cd	P	/	PASS
			Pb	X	Pb=77ppm	
			Hg	P	/	
			Cr	P	/	
			Br	NA	/	
4-2-3	INSULATION PIECE (BLACK NONMETAL)	/	Cd	P	/	PASS
			Pb	P	/	
			Hg	P	/	
			Cr	P	/	
			Br	P	/	
4-2-4	MAT (BLACK PLASTIC)	/	Cd	P	/	PASS
			Pb	P	/	
			Hg	P	/	
			Cr	P	/	
			Br	P	/	
4-2-5	PIN (SILVER METAL)	/	Cd	P	/	PASS
			Pb	P	/	
			Hg	P	/	
			Cr	P	/	
			Br	NA	/	
4-2-6	ELECTROLYTIC PAPER	/	Cd	P	/	PASS
			Pb	P	/	
			Hg	P	/	
			Cr	P	/	
			Br	P	/	
4-3	INDUCTANCE					
4-3-1	TAPE (YELLOW PLASTIC)	/	Cd	P	/	PASS
			Pb	P	/	
			Hg	P	/	
			Cr	P	/	
			Br	P	/	

To be continued





Tests Conducted

Part No.	Tested Components	Refer information	Restricted Substance	XRF Result	Chemical Confirmation Result	Conclusion on RoHS
4-3-2	IRON CORE (BLACK METAL)	/	Cd	P	/	PASS
			Pb	P	/	
			Hg	P	/	
			Cr	P	/	
			Br	NA	/	
4-3-3	WIRE (COPPER METAL)	/	Cd	P	/	PASS
			Pb	P	/	
			Hg	P	/	
			Cr	P	/	
			Br	NA	/	
4-3-4	TAPE (YELLOW NONMETAL)	/	Cd	P	/	PASS
			Pb	P	/	
			Hg	P	/	
			Cr	P	/	
			Br	P	/	
4-3-5	SUPPORT (BLACK PLASTIC)	/	Cd	P	/	PASS
			Pb	P	/	
			Hg	P	/	
			Cr	P	/	
			Br	P	/	
4-4	NTC	/	Cd	P	/	PASS
			Pb	P	/	
			Hg	P	/	
			Cr	P	/	
			Br	P	/	
4-5	INDUCTANCE					
4-5-1	CLAMP (SILVER METAL)	/	Cd	P	/	PASS
			Pb	P	/	
			Hg	P	/	
			Cr	X	Cr <sup>6+</sup> : Negative	
			Br	NA	/	

To be continued



Tests Conducted

Part No.	Tested Components	Refer information	Restricted Substance	XRF Result	Chemical Confirmation Result	Conclusion on RoHS
4-5-2	IRON CORE (BLACK METAL)	/	Cd	P	/	PASS
			Pb	P	/	
			Hg	P	/	
			Cr	P	/	
			Br	NA	/	
4-5-3	WIRE (COPPER METAL)	/	Cd	P	/	PASS
			Pb	P	/	
			Hg	P	/	
			Cr	P	/	
			Br	NA	/	
4-5-4	SUPPORT (BLACK PLASTIC)	/	Cd	P	/	PASS
			Pb	P	/	
			Hg	P	/	
			Cr	P	/	
			Br	P	/	
4-6	SUPPORT (SILVER METAL)	/	Cd	P	/	PASS
			Pb	P	/	
			Hg	P	/	
			Cr	P	/	
			Br	NA	/	
4-7	PLUG (BLACK PLASTIC)	/	Cd	P	/	PASS
			Pb	P	/	
			Hg	P	/	
			Cr	P	/	
			Br	X	PBBs=ND PBDEs=ND	
4-8	CAPACITOR					
4-8-1	COVER (YELLOW PLASTIC)	/	Cd	P	/	PASS
			Pb	P	/	
			Hg	P	/	
			Cr	P	/	
			Br	X	PBBs=ND PBDEs=ND	

To be continued



Tests Conducted

Part No.	Tested Components	Refer information	Restricted Substance	XRF Result	Chemical Confirmation Result	Conclusion on RoHS
4-8-2	GLUE (YELLOW NONMETAL)	/	Cd	P	/	PASS
			Pb	P	/	
			Hg	P	/	
			Cr	P	/	
			Br	X	PBBs=ND PBDEs=ND	
4-8-3	ELECTROLYTIC PAPER	/	Cd	X	Cd=ND	PASS
			Pb	P	/	
			Hg	P	/	
			Cr	P	/	
			Br	X	PBBs=ND PBDEs=ND	
4-9	FUSE					
4-9-1	FUSE	/	Cd	P	/	PASS
			Pb	P	/	
			Hg	P	/	
			Cr	P	/	
			Br	P	/	
4-9-2	CLAMP (SILVER METAL)	/	Cd	P	/	PASS
			Pb	P	/	
			Hg	P	/	
			Cr	P	/	
			Br	NA	/	
4-9-3	SUPPORT (BLACK PLASTIC)	/	Cd	P	/	PASS
			Pb	P	/	
			Hg	P	/	
			Cr	P	/	
			Br	P	/	
4-10	BRIDGE DIODE	/	Cd	P	/	PASS
			Pb	P	/	
			Hg	P	/	
			Cr	P	/	
			Br	X	PBBs=ND PBDEs=ND	

To be continued



Tests Conducted

Part No.	Tested Components	Refer information	Restricted Substance	XRF Result	Chemical Confirmation Result	Conclusion on RoHS
4-11	SUPPORT (BLACK METAL)	/	Cd	P	/	PASS
			Pb	P	/	
			Hg	P	/	
			Cr	P	/	
			Br	NA	/	
4-12	RESISTOR	/	Cd	P	/	PASS
			Pb	P	/	
			Hg	P	/	
			Cr	P	/	
			Br	P	/	
4-13	CAPACITOR	/	Cd	P	/	PASS
			Pb	P	/	
			Hg	P	/	
			Cr	P	/	
			Br	P	/	
4-14	TRIODE	/	Cd	P	/	PASS
			Pb	P	/	
			Hg	P	/	
			Cr	P	/	
			Br	P	/	
4-15	CAPACITOR	/	Cd	P	/	PASS
			Pb	P	/	
			Hg	P	/	
			Cr	P	/	
			Br	P	/	
4-16	CAPACITOR	/	Cd	P	/	PASS
			Pb	P	/	
			Hg	P	/	
			Cr	P	/	
			Br	P	/	

\*\*\*\*\*  
To be continued



Tests Conducted

Part No.	Tested Components	Refer information	Restricted Substance	XRF Result	Chemical Confirmation Result	Conclusion on RoHS
4-17	RESISTOR	/	Cd	P	/	PASS
			Pb	P	/	
			Hg	P	/	
			Cr	P	/	
			Br	P	/	
4-18	RESISTOR	/	Cd	P	/	PASS
			Pb	P	/	
			Hg	P	/	
			Cr	P	/	
			Br	P	/	
4-19	SHELL (YELLOW PLASTIC)	/	Cd	P	/	PASS
			Pb	P	/	
			Hg	P	/	
			Cr	P	/	
			Br	P	/	
4-20	SHELL (YELLOW PLASTIC)	/	Cd	P	/	PASS
			Pb	P	/	
			Hg	P	/	
			Cr	P	/	
			Br	P	/	
4-21	SHELL (BROWN PLASTIC)	/	Cd	P	/	PASS
			Pb	P	/	
			Hg	P	/	
			Cr	P	/	
			Br	P	/	
4-22	SHELL (BLACK PLASTIC)	/	Cd	P	/	PASS
			Pb	P	/	
			Hg	P	/	
			Cr	P	/	
			Br	P	/	
4-23	INDUCTANCE					

To be continued



Tests Conducted

Part No.	Tested Components	Refer information	Restricted Substance	XRF Result	Chemical Confirmation Result	Conclusion on RoHS
4-23-1	SHELL (BLACK NONMETAL)	/	Cd	P	/	PASS
			Pb	P	/	
			Hg	P	/	
			Cr	P	/	
			Br	P	/	
4-23-2	WIRE (COPPER METAL)	/	Cd	P	/	PASS
			Pb	P	/	
			Hg	P	/	
			Cr	P	/	
			Br	NA	/	
4-23-3	IRON CORE (BLACK METAL)	/	Cd	P	/	PASS
			Pb	P	/	
			Hg	P	/	
			Cr	P	/	
			Br	NA	/	
4-24	BRIDGE DIODE	/	Cd	P	/	PASS
			Pb	P	/	
			Hg	P	/	
			Cr	P	/	
			Br	P	/	
4-25	DIODE	/	Cd	P	/	PASS
			Pb	P	/	
			Hg	P	/	
			Cr	P	/	
			Br	X	PBBs=ND PBDEs=ND	
4-26	DIODE	/	Cd	P	/	PASS
			Pb	X	Pb=126100ppm(#3)	
			Hg	P	/	
			Cr	P	/	
			Br	P	/	

\*\*\*\*\*  
To be continued



Tests Conducted

Part No.	Tested Components	Refer information	Restricted Substance	XRF Result	Chemical Confirmation Result	Conclusion on RoHS
4-27	COVER (WHITE PLASTIC)	/	Cd	P	/	PASS
			Pb	P	/	
			Hg	P	/	
			Cr	P	/	
			Br	P	/	
4-28	CLAMP (WHITE PLASTIC)	/	Cd	P	/	PASS
			Pb	P	/	
			Hg	P	/	
			Cr	P	/	
			Br	P	/	
4-29	PIN					
4-29-1	PIN (SILVER METAL)	/	Cd	P	/	PASS
			Pb	P	/	
			Hg	P	/	
			Cr	P	/	
			Br	NA	/	
4-29-2	PLATE (GREY PLASTIC)	/	Cd	P	/	PASS
			Pb	P	/	
			Hg	P	/	
			Cr	P	/	
			Br	P	/	
4-30	PCB	/	Cd	P	/	PASS
			Pb	P	/	
			Hg	P	/	
			Cr	P	/	
			Br	P	/	
4-31	INSULATION PAPER (GREEN NONMETAL)	/	Cd	P	/	PASS
			Pb	P	/	
			Hg	P	/	
			Cr	P	/	
			Br	X	PBBs=ND PBDEs=ND	

To be continued



Tests Conducted

Part No.	Tested Components	Refer information	Restricted Substance	XRF Result	Chemical Confirmation Result	Conclusion on RoHS
4-32	COVER (SILVER METAL)	/	Cd	P	/	PASS
			Pb	P	/	
			Hg	P	/	
			Cr	P	/	
			Br	NA	/	
4-33	PLATE (SILVER METAL)	/	Cd	P	/	PASS
			Pb	X	Pb=ND	
			Hg	P	/	
			Cr	P	/	
			Br	NA	/	
4-34	INDUCTANCE					
4-34-1	COVER (SILVER METAL)	/	Cd	P	/	PASS
			Pb	P	/	
			Hg	P	/	
			Cr	P	/	
			Br	NA	/	
4-34-2	TAPE (TRANSPARENT PLASTIC)	/	Cd	P	/	PASS
			Pb	P	/	
			Hg	P	/	
			Cr	P	/	
			Br	P	/	
4-34-3	CLAMP (BLACK PLASTIC)	/	Cd	P	/	PASS
			Pb	P	/	
			Hg	P	/	
			Cr	P	/	
			Br	P	/	
4-34-4	INDUCTANCE					
4-34-4-1	WIRE (COPPER METAL)	/	Cd	P	/	PASS
			Pb	P	/	
			Hg	P	/	
			Cr	P	/	
			Br	NA	/	

\*\*\*\*\*

To be continued





Tests Conducted

Part No.	Tested Components	Refer information	Restricted Substance	XRF Result	Chemical Confirmation Result	Conclusion on RoHS
4-34-4-2	RING (GREEN METAL)	/	Cd	P	/	PASS
			Pb	P	/	
			Hg	P	/	
			Cr	P	/	
			Br	NA	/	
4-35	INDUCTANCE					
4-35-1	WIRE (COPPER METAL)	/	Cd	P	/	PASS
			Pb	P	/	
			Hg	P	/	
			Cr	P	/	
			Br	NA	/	
4-35-2	GLUE (BLACK NONMETAL)	/	Cd	P	/	PASS
			Pb	P	/	
			Hg	P	/	
			Cr	P	/	
			Br	P	/	
4-35-3	SUPPORT (BLACK PLASTIC)	/	Cd	P	/	PASS
			Pb	P	/	
			Hg	P	/	
			Cr	P	/	
			Br	X	PBBs=ND PBDEs=ND	
4-35-4	RING (BLACK PLASTIC)	/	Cd	P	/	PASS
			Pb	P	/	
			Hg	P	/	
			Cr	P	/	
			Br	X	PBBs=ND PBDEs=ND	
4-35-5	BASE (BLACK PLASTIC)	/	Cd	P	/	PASS
			Pb	P	/	
			Hg	P	/	
			Cr	P	/	
			Br	P	/	

To be continued



Tests Conducted

Part No.	Tested Components	Refer information	Restricted Substance	XRF Result	Chemical Confirmation Result	Conclusion on RoHS
4-36	LED	/	Cd	P	/	PASS
			Pb	P	/	
			Hg	P	/	
			Cr	P	/	
			Br	X	PBBs=ND PBDEs=ND	
4-37	RESISTOR	/	Cd	P	/	PASS
			Pb	P	/	
			Hg	P	/	
			Cr	P	/	
			Br	P	/	
4-38	CAPACITOR	/	Cd	P	/	PASS
			Pb	P	/	
			Hg	P	/	
			Cr	P	/	
			Br	P	/	
4-39	CAPACITOR	/	Cd	P	/	PASS
			Pb	P	/	
			Hg	P	/	
			Cr	P	/	
			Br	P	/	
4-40	CONTACTED SHEET (SILVER METAL)	/	Cd	P	/	PASS
			Pb	P	/	
			Hg	P	/	
			Cr	P	/	
			Br	NA	/	
4-41	FILM (BLUE PLASTIC)	/	Cd	P	/	PASS
			Pb	P	/	
			Hg	P	/	
			Cr	P	/	
			Br	P	/	

\*\*\*\*\*  
To be continued



Tests Conducted

Part No.	Tested Components	Refer information	Restricted Substance	XRF Result	Chemical Confirmation Result	Conclusion on RoHS
4-42	PCB	/	Cd	P	/	PASS
			Pb	P	/	
			Hg	P	/	
			Cr	P	/	
			Br	X	PBBs=ND PBDEs=ND	
4-43	WASHER (SILVER METAL)	/	Cd	P	/	PASS
			Pb	P	/	
			Hg	P	/	
			Cr	P	/	
			Br	NA	/	
4-44	COLUMN (WHITE PLASTIC)	/	Cd	P	/	PASS
			Pb	P	/	
			Hg	P	/	
			Cr	P	/	
			Br	P	/	
4-45	SCREW (SILVER METAL)	/	Cd	P	/	PASS
			Pb	P	/	
			Hg	P	/	
			Cr	P	/	
			Br	NA	/	
4-46	SCREW (SILVER METAL)	/	Cd	P	/	PASS
			Pb	P	/	
			Hg	P	/	
			Cr	P	/	
			Br	NA	/	
4-47	SCREW (SILVER METAL)	/	Cd	P	/	PASS
			Pb	P	/	
			Hg	P	/	
			Cr	P	/	
			Br	NA	/	

\*\*\*\*\*  
To be continued



Tests Conducted

Part No.	Tested Components	Refer information	Restricted Substance	XRF Result	Chemical Confirmation Result	Conclusion on RoHS
4-48	SCREW (SILVER METAL)	/	Cd	P	/	PASS
			Pb	P	/	
			Hg	P	/	
			Cr	P	/	
			Br	NA	/	
4-49	COVER (SILVER METAL)	/	Cd	P	/	PASS
			Pb	P	/	
			Hg	P	/	
			Cr	X	Cr <sup>6+</sup> : Negative	
			Br	NA	/	
5	LAMPHOUSE					
5-1	DAM-BOARD (BLACK METAL)	/	Cd	P	/	PASS
			Pb	P	/	
			Hg	P	/	
			Cr	P	/	
			Br	NA	/	
5-2	RETROREFLECTOR					
5-2-1	FIXING PLATE (BLACK METAL)	/	Cd	P	/	PASS
			Pb	P	/	
			Hg	P	/	
			Cr	P	/	
			Br	NA	/	
5-2-2	FIXING PLATE (COPPER METAL)	/	Cd	P	/	PASS
			Pb	P	/	
			Hg	P	/	
			Cr	P	/	
			Br	NA	/	
5-2-3	SCREW TUBE (BLACK METAL)	/	Cd	P	/	PASS
			Pb	P	/	
			Hg	P	/	
			Cr	P	/	
			Br	NA	/	

\*\*\*\*\*

To be continued



Tests Conducted

Part No.	Tested Components	Refer information	Restricted Substance	XRF Result	Chemical Confirmation Result	Conclusion on RoHS
5-2-4	PLATE (BLACK METAL)	/	Cd	P	/	PASS
			Pb	P	/	
			Hg	P	/	
			Cr	P	/	
			Br	NA	/	
5-2-5	RETROREFLECTOR	/	Cd	P	/	PASS
			Pb	P	/	
			Hg	P	/	
			Cr	P	/	
			Br	P	/	
5-2-6	SUPPORT (BLACK METAL)	/	Cd	P	/	PASS
			Pb	X	Pb=275ppm	
			Hg	P	/	
			Cr	P	/	
			Br	NA	/	
5-3	LAMP					
5-3-1	SUPPORT (BLACK METAL)	/	Cd	P	/	PASS
			Pb	P	/	
			Hg	P	/	
			Cr	P	/	
			Br	NA	/	
5-3-2	HINGE (BLACK METAL)	/	Cd	P	/	PASS
			Pb	P	/	
			Hg	P	/	
			Cr	P	/	
			Br	NA	/	
5-3-3	GLUE (WHITE NONMETAL)	/	Cd	P	/	PASS
			Pb	P	/	
			Hg	P	/	
			Cr	P	/	
			Br	P	/	

To be continued



Tests Conducted

Part No.	Tested Components	Refer information	Restricted Substance	XRF Result	Chemical Confirmation Result	Conclusion on RoHS
5-3-4	LAMP (TRANSPARENT NONMETAL)	/	Cd	P	/	PASS
			Pb	P	/	
			Hg	P	/	
			Cr	P	/	
			Br	P	/	
5-3-5	CLAMP (SILVER METAL)	/	Cd	P	/	PASS
			Pb	P	/	
			Hg	P	/	
			Cr	P	/	
			Br	NA	/	
5-3-6	LAMPHOLDER (BLACK PLASTIC)	/	Cd	P	/	PASS
			Pb	P	/	
			Hg	P	/	
			Cr	P	/	
			Br	P	/	
5-4	CATOPTRIC SYSTEM					
5-4-1	RETROREFLECTOR	/	Cd	P	/	PASS
			Pb	P	/	
			Hg	P	/	
			Cr	P	/	
			Br	P	/	
5-4-2	BASE (BLACK METAL)	/	Cd	P	/	PASS
			Pb	P	/	
			Hg	P	/	
			Cr	X	Cr <sup>6+</sup> : Negative	
			Br	NA	/	
5-4-3	HINGE (BLACK METAL)	/	Cd	P	/	PASS
			Pb	P	/	
			Hg	P	/	
			Cr	P	/	
			Br	NA	/	
5-4-4	MOTOR					

\*\*\*\*\*

To be continued



Tests Conducted

Part No.	Tested Components	Refer information	Restricted Substance	XRF Result	Chemical Confirmation Result	Conclusion on RoHS
5-4-4-1	SCREW (SILVER METAL)	/	Cd	P	/	PASS
			Pb	P	/	
			Hg	P	/	
			Cr	P	/	
			Br	NA	/	
5-4-4-2	COVER (SILVER METAL)	/	Cd	P	/	PASS
			Pb	X	Pb=216ppm	
			Hg	P	/	
			Cr	X	Cr <sup>6+</sup> : Negative	
			Br	NA	/	
5-4-4-3	WASHER (BLACK METAL)	/	Cd	P	/	PASS
			Pb	P	/	
			Hg	P	/	
			Cr	P	/	
			Br	NA	/	
5-4-4-4	WASHER (YELLOW PLASTIC)	/	Cd	P	/	PASS
			Pb	P	/	
			Hg	P	/	
			Cr	P	/	
			Br	P	/	
5-4-4-5	BEARING					
5-4-4-5-1	OUTER RING (SILVER METAL)	/	Cd	P	/	PASS
			Pb	P	/	
			Hg	P	/	
			Cr	X	Cr <sup>6+</sup> : Negative	
			Br	NA	/	
5-4-4-5-2	DUSTPROOF RING (SILVER METAL)	/	Cd	P	/	PASS
			Pb	P	/	
			Hg	P	/	
			Cr	P	/	
			Br	NA	/	

To be continued



Tests Conducted

Part No.	Tested Components	Refer information	Restricted Substance	XRF Result	Chemical Confirmation Result	Conclusion on RoHS
5-4-4-5-3	BALL (SILVER METAL)	/	Cd	P	/	PASS
			Pb	P	/	
			Hg	P	/	
			Cr	P	/	
			Br	NA	/	
5-4-4-5-4	STENT (YELLOW PLASTIC)	/	Cd	P	/	PASS
			Pb	P	/	
			Hg	P	/	
			Cr	P	/	
			Br	P	/	
5-4-4-5-5	INNER RING (SILVER METAL)	/	Cd	P	/	PASS
			Pb	P	/	
			Hg	P	/	
			Cr	P	/	
			Br	NA	/	
5-4-4-6	MAGNET	/	Cd	P	/	PASS
			Pb	P	/	
			Hg	P	/	
			Cr	P	/	
			Br	P	/	
5-4-4-7	AXIS (SILVER METAL)	/	Cd	P	/	PASS
			Pb	P	/	
			Hg	P	/	
			Cr	X	Cr <sup>6+</sup> : Negative	
			Br	NA	/	
5-4-4-8	PCB	/	Cd	P	/	PASS
			Pb	P	/	
			Hg	P	/	
			Cr	P	/	
			Br	X	PBBs=ND PBDEs=ND	

To be continued





Tests Conducted

Part No.	Tested Components	Refer information	Restricted Substance	XRF Result	Chemical Confirmation Result	Conclusion on RoHS
5-4-4-9	PLUG (WHITE PLASTIC)	/	Cd	P	/	PASS
			Pb	P	/	
			Hg	P	/	
			Cr	P	/	
			Br	P	/	
5-4-4-10	WIRE (COPPER METAL)	/	Cd	P	/	PASS
			Pb	P	/	
			Hg	P	/	
			Cr	P	/	
			Br	NA	/	
5-4-4-11	SUPPORT (YELLOW PLASTIC)	/	Cd	P	/	PASS
			Pb	P	/	
			Hg	P	/	
			Cr	P	/	
			Br	P	/	
5-4-4-12	SILICON STEEL SHEET (BLACK METAL)	/	Cd	P	/	PASS
			Pb	P	/	
			Hg	P	/	
			Cr	P	/	
			Br	NA	/	
5-4-4-13	CAP (SILVER METAL)	/	Cd	P	/	PASS
			Pb	P	/	
			Hg	P	/	
			Cr	P	/	
			Br	NA	/	
5-4-5	SWITCH					
5-4-5-1	CONTACTED SHEET (SILVER METAL)	/	Cd	P	/	PASS
			Pb	P	/	
			Hg	P	/	
			Cr	X	Cr <sup>6+</sup> : Negative	
			Br	NA	/	

To be continued



Tests Conducted

Part No.	Tested Components	Refer information	Restricted Substance	XRF Result	Chemical Confirmation Result	Conclusion on RoHS
5-4-5-2	COVER (BLACK PLASTIC)	/	Cd	P	/	PASS
			Pb	P	/	
			Hg	P	/	
			Cr	P	/	
			Br	X	PBBs=ND PBDEs=ND	
5-4-5-3	BUTTON (GREY PLASTIC)	/	Cd	P	/	PASS
			Pb	P	/	
			Hg	P	/	
			Cr	P	/	
			Br	X	PBBs=ND PBDEs=ND	
5-4-5-4	FRAME (COPPER METAL)	/	Cd	P	/	PASS
			Pb	P	/	
			Hg	P	/	
			Cr	P	/	
			Br	NA	/	
5-4-5-5	CONTACTED SHEET (SILVER METAL)	/	Cd	P	/	PASS
			Pb	P	/	
			Hg	P	/	
			Cr	P	/	
			Br	NA	/	
5-4-5-6	BASE (BLACK PLASTIC)	/	Cd	P	/	PASS
			Pb	P	/	
			Hg	P	/	
			Cr	X	Cr <sup>6+</sup> : Negative	
			Br	P	/	
5-4-6	HINGE (SILVER METAL)	/	Cd	P	/	PASS
			Pb	P	/	
			Hg	P	/	
			Cr	P	/	
			Br	NA	/	
5-5	LAMP					

To be continued



Tests Conducted

Part No.	Tested Components	Refer information	Restricted Substance	XRF Result	Chemical Confirmation Result	Conclusion on RoHS
5-5-1	COVER (TRANSPARENT NONMETAL)	/	Cd	P	/	PASS
			Pb	P	/	
			Hg	P	/	
			Cr	P	/	
			Br	P	/	
5-5-2	LAMP FILAMENT (SILVER METAL)	/	Cd	P	/	PASS
			Pb	P	/	
			Hg	P	/	
			Cr	P	/	
			Br	NA	/	
5-5-3	CONTACTED SHEET (SILVER METAL)	/	Cd	P	/	PASS
			Pb	P	/	
			Hg	P	/	
			Cr	P	/	
			Br	NA	/	
5-5-4	PIN (SILVER METAL)	/	Cd	P	/	PASS
			Pb	P	/	
			Hg	P	/	
			Cr	P	/	
			Br	NA	/	
5-5-5	PIN (SILVER METAL)	/	Cd	P	/	PASS
			Pb	X	Pb=ND	
			Hg	P	/	
			Cr	P	/	
			Br	NA	/	
5-5-6	TUBE (WHITE PLASTIC)	/	Cd	P	/	PASS
			Pb	P	/	
			Hg	P	/	
			Cr	P	/	
			Br	P	/	

\*\*\*\*\*  
To be continued



Tests Conducted

Part No.	Tested Components	Refer information	Restricted Substance	XRF Result	Chemical Confirmation Result	Conclusion on RoHS
5-5-7	COVER (SILVER METAL)	/	Cd	P	/	PASS
			Pb	P	/	
			Hg	P	/	
			Cr	P	/	
			Br	NA	/	
5-5-8	WIRE (COPPER METAL)	/	Cd	P	/	PASS
			Pb	P	/	
			Hg	P	/	
			Cr	P	/	
			Br	NA	/	
5-5-9	LEAD SKIN (RED NONMETAL)	/	Cd	P	/	PASS
			Pb	P	/	
			Hg	P	/	
			Cr	P	/	
			Br	P	/	
5-5-10	LEAD SKIN (WHITE NONMETAL)	/	Cd	P	/	PASS
			Pb	P	/	
			Hg	P	/	
			Cr	P	/	
			Br	P	/	
5-5-11	COVER (WHITE NONMETAL)	/	Cd	P	/	PASS
			Pb	P	/	
			Hg	P	/	
			Cr	P	/	
			Br	P	/	
5-5-12	LAMP HOLDER (BLACK METAL)	/	Cd	P	/	PASS
			Pb	P	/	
			Hg	P	/	
			Cr	P	/	
			Br	NA	/	

To be continued



Tests Conducted

Part No.	Tested Components	Refer information	Restricted Substance	XRF Result	Chemical Confirmation Result	Conclusion on RoHS
5-6	SCREW (SILVER METAL)	/	Cd	P	/	PASS
			Pb	P	/	
			Hg	P	/	
			Cr	X	Cr <sup>6+</sup> : Negative	
			Br	NA	/	
5-7	SCREW (SILVER METAL)	/	Cd	P	/	PASS
			Pb	P	/	
			Hg	P	/	
			Cr	P	/	
			Br	NA	/	
5-8	SCREW (SILVER METAL)	/	Cd	P	/	PASS
			Pb	P	/	
			Hg	P	/	
			Cr	P	/	
			Br	NA	/	
5-9	SCREW (SILVER METAL)	/	Cd	P	/	PASS
			Pb	P	/	
			Hg	P	/	
			Cr	P	/	
			Br	NA	/	
5-10	SCREW (SILVER METAL)	/	Cd	P	/	PASS
			Pb	P	/	
			Hg	P	/	
			Cr	P	/	
			Br	NA	/	
5-11	SCREW (SILVER METAL)	/	Cd	P	/	PASS
			Pb	P	/	
			Hg	P	/	
			Cr	X	Cr <sup>6+</sup> : Negative	
			Br	NA	/	

To be continued



Tests Conducted

Part No.	Tested Components	Refer information	Restricted Substance	XRF Result	Chemical Confirmation Result	Conclusion on RoHS
5-12	WASHER (SILVER METAL)	/	Cd	P	/	PASS
			Pb	P	/	
			Hg	P	/	
			Cr	P	/	
			Br	NA	/	
5-13	WASHER (SILVER METAL)	/	Cd	P	/	PASS
			Pb	P	/	
			Hg	P	/	
			Cr	P	/	
			Br	NA	/	
5-14	COVER (BLACK METAL)	/	Cd	P	/	PASS
			Pb	P	/	
			Hg	P	/	
			Cr	P	/	
			Br	NA	/	
6	MONOCHROMATOR					
6-1	RETROREFLECTOR					
6-1-1	SUPPORT (BLACK METAL)	/	Cd	P	/	PASS
			Pb	P	/	
			Hg	P	/	
			Cr	P	/	
			Br	NA	/	
6-1-2	RETROREFLECTOR	/	Cd	P	/	PASS
			Pb	P	/	
			Hg	P	/	
			Cr	P	/	
			Br	P	/	
6-2	SENSOR					
6-2-1	SENSOR (BLACK PLASTIC)	/	Cd	P	/	PASS
			Pb	P	/	
			Hg	P	/	
			Cr	P	/	
			Br	P	/	

To be continued



Tests Conducted

Part No.	Tested Components	Refer information	Restricted Substance	XRF Result	Chemical Confirmation Result	Conclusion on RoHS
6-2-2	WASHER (YELLOW PLASTIC)	/	Cd	P	/	PASS
			Pb	P	/	
			Hg	P	/	
			Cr	P	/	
			Br	P	/	
6-2-3	PCB	/	Cd	P	/	PASS
			Pb	P	/	
			Hg	P	/	
			Cr	P	/	
			Br	X	PBBs=ND PBDEs=ND	
6-2-4	SUPPORT (BLACK METAL)	/	Cd	P	/	PASS
			Pb	P	/	
			Hg	P	/	
			Cr	P	/	
			Br	NA	/	
6-3	LENS					
6-3-1	LENS	/	Cd	P	/	PASS
			Pb	P	/	
			Hg	P	/	
			Cr	P	/	
			Br	P	/	
6-3-2	GLUE (WHITE NONMETAL)	/	Cd	P	/	PASS
			Pb	P	/	
			Hg	P	/	
			Cr	P	/	
			Br	P	/	
6-3-3	PLATE (BLACK METAL)	/	Cd	P	/	PASS
			Pb	P	/	
			Hg	P	/	
			Cr	P	/	
			Br	NA	/	

To be continued



Tests Conducted

Part No.	Tested Components	Refer information	Restricted Substance	XRF Result	Chemical Confirmation Result	Conclusion on RoHS
6-3-4	PLATE (COPPER METAL)	/	Cd	P	/	PASS
			Pb	P	/	
			Hg	P	/	
			Cr	P	/	
			Br	NA	/	
6-3-5	PLATE (BLACK METAL)	/	Cd	P	/	PASS
			Pb	P	/	
			Hg	P	/	
			Cr	P	/	
			Br	NA	/	
6-3-6	SUPPORT (BLACK METAL)	/	Cd	P	/	PASS
			Pb	P	/	
			Hg	P	/	
			Cr	P	/	
			Br	NA	/	
6-4	LENS					
6-4-1	FRAME (BLACK PLASTIC)	/	Cd	P	/	PASS
			Pb	P	/	
			Hg	P	/	
			Cr	P	/	
			Br	P	/	
6-4-2	LENS	/	Cd	P	/	PASS
			Pb	P	/	
			Hg	P	/	
			Cr	P	/	
			Br	P	/	
6-4-3	PLATE (BLACK METAL)	/	Cd	P	/	PASS
			Pb	P	/	
			Hg	P	/	
			Cr	P	/	
			Br	NA	/	

To be continued





Tests Conducted

Part No.	Tested Components	Refer information	Restricted Substance	XRF Result	Chemical Confirmation Result	Conclusion on RoHS
6-4-4	PLATE (BLACK METAL)	/	Cd	P	/	PASS
			Pb	P	/	
			Hg	P	/	
			Cr	P	/	
			Br	NA	/	
6-4-5	SCREW (SILVER METAL)	/	Cd	P	/	PASS
			Pb	P	/	
			Hg	P	/	
			Cr	P	/	
			Br	NA	/	
6-4-6	SPRING (SILVER METAL)	/	Cd	P	/	PASS
			Pb	P	/	
			Hg	P	/	
			Cr	X	Cr <sup>6+</sup> : Negative	
			Br	NA	/	
6-4-7	BASE (COPPER METAL)	/	Cd	P	/	PASS
			Pb	X	Pb=16420ppm(#1)	
			Hg	P	/	
			Cr	P	/	
			Br	NA	/	
6-4-8	PLATE (BLACK METAL)	/	Cd	P	/	PASS
			Pb	P	/	
			Hg	P	/	
			Cr	P	/	
			Br	NA	/	
6-4-9	GEAR (COPPER METAL)	/	Cd	P	/	PASS
			Pb	P	/	
			Hg	P	/	
			Cr	P	/	
			Br	NA	/	

\*\*\*\*\*  
To be continued



Tests Conducted

Part No.	Tested Components	Refer information	Restricted Substance	XRF Result	Chemical Confirmation Result	Conclusion on RoHS
6-4-10	WASHER (COPPER METAL)	/	Cd	P	/	PASS
			Pb	X	Pb=18720ppm(#1)	
			Hg	P	/	
			Cr	P	/	
			Br	NA	/	
7	WAVELENGTH DRIVEN MOTOR					
7-1	GEAR (COPPER METAL)	/	Cd	P	/	PASS
			Pb	P	/	
			Hg	P	/	
			Cr	P	/	
			Br	NA	/	
7-2	COVER (BLACK PLASTIC)	/	Cd	P	/	PASS
			Pb	P	/	
			Hg	P	/	
			Cr	P	/	
			Br	P	/	
7-3	RING (SILVER METAL)	/	Cd	P	/	PASS
			Pb	P	/	
			Hg	P	/	
			Cr	P	/	
			Br	NA	/	
7-4	RING (BLACK METAL)	/	Cd	P	/	PASS
			Pb	P	/	
			Hg	P	/	
			Cr	P	/	
			Br	NA	/	
7-5	WASHER (SILVER METAL)	/	Cd	P	/	PASS
			Pb	P	/	
			Hg	P	/	
			Cr	P	/	
			Br	NA	/	
7-6	BEARING					

\*\*\*\*\*

To be continued



Tests Conducted

Part No.	Tested Components	Refer information	Restricted Substance	XRF Result	Chemical Confirmation Result	Conclusion on RoHS
7-6-1	OUTER RING (SILVER METAL)	/	Cd	P	/	PASS
			Pb	P	/	
			Hg	P	/	
			Cr	X	Cr <sup>6+</sup> : Negative	
			Br	NA	/	
7-6-2	DUSTPROOF RING (SILVER METAL)	/	Cd	P	/	PASS
			Pb	P	/	
			Hg	P	/	
			Cr	P	/	
			Br	NA	/	
7-6-3	BALL (SILVER METAL)	/	Cd	P	/	PASS
			Pb	P	/	
			Hg	P	/	
			Cr	X	Cr <sup>6+</sup> : Negative	
			Br	NA	/	
7-6-4	STENT (YELLOW PLASTIC)	/	Cd	P	/	PASS
			Pb	P	/	
			Hg	P	/	
			Cr	P	/	
			Br	P	/	
7-6-5	INNER RING (SILVER METAL)	/	Cd	P	/	PASS
			Pb	P	/	
			Hg	P	/	
			Cr	X	Cr <sup>6+</sup> : Negative	
			Br	NA	/	
7-7	WASHER (BLUE PLASTIC)	/	Cd	P	/	PASS
			Pb	P	/	
			Hg	P	/	
			Cr	P	/	
			Br	P	/	

To be continued



Tests Conducted

Part No.	Tested Components	Refer information	Restricted Substance	XRF Result	Chemical Confirmation Result	Conclusion on RoHS
7-8	MAGNET	/	Cd	P	/	PASS
			Pb	P	/	
			Hg	P	/	
			Cr	P	/	
			Br	P	/	
7-9	AXIS (SILVER METAL)	/	Cd	P	/	PASS
			Pb	P	/	
			Hg	P	/	
			Cr	X	Cr <sup>6+</sup> : Negative	
			Br	NA	/	
7-10	SHELL (BLACK PLASTIC)	/	Cd	P	/	PASS
			Pb	P	/	
			Hg	P	/	
			Cr	P	/	
			Br	X	PBBs=ND PBDEs=ND	
7-11	WIRE (COPPER METAL)	/	Cd	P	/	PASS
			Pb	P	/	
			Hg	P	/	
			Cr	P	/	
			Br	NA	/	
7-12	SLEEVE (WHITE PLASTIC)	/	Cd	P	/	PASS
			Pb	P	/	
			Hg	P	/	
			Cr	P	/	
			Br	P	/	
7-13	SILICON STEEL SHEET (SILVER METAL)	/	Cd	P	/	PASS
			Pb	P	/	
			Hg	P	/	
			Cr	X	Cr <sup>6+</sup> : Negative	
			Br	NA	/	

To be continued



Tests Conducted

Part No.	Tested Components	Refer information	Restricted Substance	XRF Result	Chemical Confirmation Result	Conclusion on RoHS
7-14	COVER (BLACK PLASTIC)	/	Cd	P	/	PASS
			Pb	P	/	
			Hg	P	/	
			Cr	P	/	
			Br	X	PBBs=ND PBDEs=397ppm	
8	SLIT MOTOR					
8-1	MOTOR					
8-1-1	NUT (SILVER METAL)	/	Cd	P	/	PASS
			Pb	P	/	
			Hg	P	/	
			Cr	P	/	
			Br	NA	/	
8-1-2	SCREW (COPPER METAL)	/	Cd	P	/	PASS
			Pb	X	Pb=10130ppm(#1)	
			Hg	P	/	
			Cr	P	/	
			Br	NA	/	
8-1-3	PCB	/	Cd	P	/	PASS
			Pb	P	/	
			Hg	P	/	
			Cr	P	/	
			Br	X	PBBs=ND PBDEs=ND	
8-1-4	PLATE (BLACK METAL)	/	Cd	P	/	PASS
			Pb	P	/	
			Hg	P	/	
			Cr	P	/	
			Br	NA	/	
8-1-5	PLATE (BLACK METAL)	/	Cd	P	/	PASS
			Pb	P	/	
			Hg	P	/	
			Cr	P	/	
			Br	NA	/	

To be continued



Tests Conducted

Part No.	Tested Components	Refer information	Restricted Substance	XRF Result	Chemical Confirmation Result	Conclusion on RoHS
8-1-6	BLOCK (BLACK METAL)	/	Cd	P	/	PASS
			Pb	P	/	
			Hg	P	/	
			Cr	P	/	
			Br	NA	/	
8-1-7	FRAME (SILVER METAL)	/	Cd	P	/	PASS
			Pb	P	/	
			Hg	P	/	
			Cr	P	/	
			Br	NA	/	
8-1-8	HOLE (WHITE PLASTIC)	/	Cd	P	/	PASS
			Pb	P	/	
			Hg	P	/	
			Cr	P	/	
			Br	P	/	
8-1-9	CLAMP (BLACK METAL)	/	Cd	P	/	PASS
			Pb	P	/	
			Hg	P	/	
			Cr	P	/	
			Br	NA	/	
8-1-10	BEARING					
8-1-10-1	OUTER RING (SILVER METAL)	/	Cd	P	/	PASS
			Pb	P	/	
			Hg	P	/	
			Cr	P	/	
			Br	NA	/	
8-1-10-2	DUSTPROOF RING (SILVER METAL)	/	Cd	P	/	PASS
			Pb	P	/	
			Hg	P	/	
			Cr	P	/	
			Br	NA	/	

To be continued



Tests Conducted

Part No.	Tested Components	Refer information	Restricted Substance	XRF Result	Chemical Confirmation Result	Conclusion on RoHS
8-1-10-3	BALL (SILVER METAL)	/	Cd	P	/	PASS
			Pb	P	/	
			Hg	P	/	
			Cr	X	Cr <sup>6+</sup> : Negative	
			Br	NA	/	
8-1-10-4	STENT (SILVER METAL)	/	Cd	P	/	PASS
			Pb	P	/	
			Hg	P	/	
			Cr	P	/	
			Br	NA	/	
8-1-10-5	INNER RING (SILVER METAL)	/	Cd	P	/	PASS
			Pb	P	/	
			Hg	P	/	
			Cr	X	Cr <sup>6+</sup> : Negative	
			Br	NA	/	
8-1-11	MAGNET	/	Cd	P	/	PASS
			Pb	P	/	
			Hg	P	/	
			Cr	P	/	
			Br	P	/	
8-1-12	TUBE (COPPER METAL)	/	Cd	P	/	PASS
			Pb	P	/	
			Hg	P	/	
			Cr	P	/	
			Br	NA	/	
8-1-13	AXIS (SILVER METAL)	/	Cd	P	/	PASS
			Pb	P	/	
			Hg	P	/	
			Cr	X	Cr <sup>6+</sup> : Negative	
			Br	NA	/	

To be continued



Tests Conducted

Part No.	Tested Components	Refer information	Restricted Substance	XRF Result	Chemical Confirmation Result	Conclusion on RoHS
8-1-14	BASE (YELLOW PLASTIC)	/	Cd	P	/	PASS
			Pb	P	/	
			Hg	P	/	
			Cr	P	/	
			Br	P	/	
8-1-15	LEAD SKIN (WHITE PLASTIC)	/	Cd	P	/	PASS
			Pb	P	/	
			Hg	P	/	
			Cr	P	/	
			Br	P	/	
8-1-16	LEAD SKIN (WHITE PLASTIC)	/	Cd	P	/	PASS
			Pb	P	/	
			Hg	P	/	
			Cr	P	/	
			Br	P	/	
8-1-17	WIRE (COPPER METAL)	/	Cd	P	/	PASS
			Pb	P	/	
			Hg	P	/	
			Cr	P	/	
			Br	NA	/	
8-1-18	SUPPORT (YELLOW PLASTIC)	/	Cd	P	/	PASS
			Pb	P	/	
			Hg	P	/	
			Cr	P	/	
			Br	P	/	
8-1-19	SILICON STEEL SHEET (SILVER METAL)	/	Cd	P	/	PASS
			Pb	P	/	
			Hg	P	/	
			Cr	X	Cr <sup>6+</sup> : Negative	
			Br	NA	/	

To be continued





Tests Conducted

Part No.	Tested Components	Refer information	Restricted Substance	XRF Result	Chemical Confirmation Result	Conclusion on RoHS
8-1-20	COVER (BLACK METAL)	/	Cd	P	/	PASS
			Pb	P	/	
			Hg	P	/	
			Cr	P	/	
			Br	NA	/	
8-2	FIXING PLATE					
8-2-1	FIXING PLATE (SILVER METAL)	/	Cd	P	/	PASS
			Pb	P	/	
			Hg	P	/	
			Cr	X	Cr <sup>6+</sup> : Negative	
			Br	NA	/	
8-2-2	SUPPORT (BLACK METAL)	/	Cd	P	/	PASS
			Pb	P	/	
			Hg	P	/	
			Cr	P	/	
			Br	NA	/	
8-3	SLIT					
8-3-1	SUPPORT (BLACK METAL)	/	Cd	P	/	PASS
			Pb	P	/	
			Hg	P	/	
			Cr	P	/	
			Br	NA	/	
8-3-2	COVER (BLACK PLASTIC)	/	Cd	P	/	PASS
			Pb	P	/	
			Hg	P	/	
			Cr	P	/	
			Br	P	/	
8-3-3	AXIS (BLACK PLASTIC)	/	Cd	P	/	PASS
			Pb	P	/	
			Hg	P	/	
			Cr	P	/	
			Br	P	/	

\*\*\*\*\*

To be continued



Tests Conducted

Part No.	Tested Components	Refer information	Restricted Substance	XRF Result	Chemical Confirmation Result	Conclusion on RoHS
8-3-4	SCREW (BLACK METAL)	/	Cd	P	/	PASS
			Pb	P	/	
			Hg	P	/	
			Cr	P	/	
			Br	NA	/	
8-3-5	BASE (BLACK METAL)	/	Cd	P	/	PASS
			Pb	P	/	
			Hg	P	/	
			Cr	P	/	
			Br	NA	/	
8-3-6	PLATE (BLACK METAL)	/	Cd	P	/	PASS
			Pb	P	/	
			Hg	P	/	
			Cr	P	/	
			Br	NA	/	
8-3-7	SCREW (SILVER METAL)	/	Cd	P	/	PASS
			Pb	P	/	
			Hg	P	/	
			Cr	P	/	
			Br	NA	/	
8-3-8	PLATE (COPPER METAL)	/	Cd	P	/	PASS
			Pb	P	/	
			Hg	P	/	
			Cr	P	/	
			Br	NA	/	
8-3-9	SLIT (GREEN NONMETAL)	/	Cd	P	/	PASS
			Pb	P	/	
			Hg	P	/	
			Cr	X	Cr <sup>6+</sup> : Negative	
			Br	P	/	

\*\*\*\*\*  
To be continued



Tests Conducted

Part No.	Tested Components	Refer information	Restricted Substance	XRF Result	Chemical Confirmation Result	Conclusion on RoHS
8-3-10	AXIS (COPPER METAL)	/	Cd	P	/	PASS
			Pb	X	Pb=10820ppm(#1)	
			Hg	P	/	
			Cr	P	/	
			Br	NA	/	
8-3-11	SHELL (SILVER METAL)	/	Cd	P	/	PASS
			Pb	P	/	
			Hg	P	/	
			Cr	P	/	
			Br	NA	/	
8-4	PCB					
8-4-1	COVER (BLACK PLASTIC)	/	Cd	P	/	PASS
			Pb	P	/	
			Hg	P	/	
			Cr	P	/	
			Br	P	/	
8-4-2	LED	/	Cd	P	/	PASS
			Pb	P	/	
			Hg	P	/	
			Cr	P	/	
			Br	P	/	
8-4-3	SENSOR	/	Cd	P	/	PASS
			Pb	P	/	
			Hg	P	/	
			Cr	P	/	
			Br	P	/	
8-4-4	PCB	/	Cd	P	/	PASS
			Pb	P	/	
			Hg	P	/	
			Cr	P	/	
			Br	X	PBBs=ND PBDEs=ND	
8-5	OPTICAL FILTER					

\*\*\*\*\*

To be continued



Tests Conducted

Part No.	Tested Components	Refer information	Restricted Substance	XRF Result	Chemical Confirmation Result	Conclusion on RoHS
8-5-1	SHEET (SILVER METAL)	/	Cd	P	/	PASS
			Pb	P	/	
			Hg	P	/	
			Cr	X	Cr <sup>6+</sup> : Negative	
			Br	NA	/	
8-5-2	OPTICAL FILTER (BLACK NONMETAL)	/	Cd	P	/	PASS
			Pb	P	/	
			Hg	P	/	
			Cr	P	/	
			Br	P	/	
8-5-3	OPTICAL FILTER (GREY NONMETAL)	/	Cd	P	/	PASS
			Pb	P	/	
			Hg	P	/	
			Cr	P	/	
			Br	P	/	
8-5-4	OPTICAL FILTER (BLUE NONMETAL)	/	Cd	P	/	PASS
			Pb	P	/	
			Hg	P	/	
			Cr	P	/	
			Br	P	/	
8-5-5	OPTICAL FILTER (ORANGE NONMETAL)	/	Cd	X	Cd=ND	PASS
			Pb	P	/	
			Hg	P	/	
			Cr	P	/	
			Br	P	/	
8-5-6	OPTICAL FILTER (PURPLE NONMETAL)	/	Cd	P	/	PASS
			Pb	P	/	
			Hg	P	/	
			Cr	P	/	
			Br	P	/	

To be continued



Tests Conducted

Part No.	Tested Components	Refer information	Restricted Substance	XRF Result	Chemical Confirmation Result	Conclusion on RoHS
8-5-7	OPTICAL FILTER (BLACK NONMETAL)	/	Cd	X	Cd=ND	PASS
			Pb	P	/	
			Hg	P	/	
			Cr	P	/	
			Br	P	/	
8-5-8	OPTICAL FILTER (BLACK NONMETAL)	/	Cd	P	/	PASS
			Pb	P	/	
			Hg	P	/	
			Cr	P	/	
			Br	P	/	
8-5-9	GEAR (COPPER METAL)	/	Cd	P	/	PASS
			Pb	P	/	
			Hg	P	/	
			Cr	P	/	
			Br	NA	/	
8-5-10	SUPPORT (BLACK PLASTIC)	/	Cd	P	/	PASS
			Pb	P	/	
			Hg	P	/	
			Cr	P	/	
			Br	P	/	
8-6	GEAR BOX					
8-6-1	COVER (SILVER METAL)	/	Cd	P	/	PASS
			Pb	P	/	
			Hg	P	/	
			Cr	P	/	
			Br	NA	/	
8-6-2	AXIS (SILVER METAL)	/	Cd	P	/	PASS
			Pb	P	/	
			Hg	P	/	
			Cr	P	/	
			Br	NA	/	

To be continued



Tests Conducted

Part No.	Tested Components	Refer information	Restricted Substance	XRF Result	Chemical Confirmation Result	Conclusion on RoHS
8-6-3	GEAR (COPPER METAL)	/	Cd	P	/	PASS
			Pb	P	/	
			Hg	P	/	
			Cr	P	/	
			Br	NA	/	
8-6-4	WASHER (COPPER METAL)	/	Cd	P	/	PASS
			Pb	P	/	
			Hg	P	/	
			Cr	P	/	
			Br	NA	/	
8-6-5	TUBE (COPPER METAL)	/	Cd	P	/	PASS
			Pb	P	/	
			Hg	P	/	
			Cr	P	/	
			Br	NA	/	
8-6-6	GEAR (COPPER METAL)	/	Cd	P	/	PASS
			Pb	P	/	
			Hg	P	/	
			Cr	P	/	
			Br	NA	/	
8-6-7	AXIS (SILVER METAL)	/	Cd	P	/	PASS
			Pb	P	/	
			Hg	P	/	
			Cr	X	Cr <sup>6+</sup> : Negative	
			Br	NA	/	
8-6-8	COVER (SILVER METAL)	/	Cd	P	/	PASS
			Pb	P	/	
			Hg	P	/	
			Cr	P	/	
			Br	NA	/	
8-7	STATOR					

To be continued



Tests Conducted

Part No.	Tested Components	Refer information	Restricted Substance	XRF Result	Chemical Confirmation Result	Conclusion on RoHS
8-7-1	GEAR (COPPER METAL)	/	Cd	P	/	PASS
			Pb	P	/	
			Hg	P	/	
			Cr	P	/	
			Br	NA	/	
8-7-2	COVER (BLACK PLASTIC)	/	Cd	P	/	PASS
			Pb	P	/	
			Hg	P	/	
			Cr	P	/	
			Br	P	/	
8-7-3	COVER (SILVER METAL)	/	Cd	P	/	PASS
			Pb	P	/	
			Hg	P	/	
			Cr	P	/	
			Br	NA	/	
8-7-4	WASHER (COPPER METAL)	/	Cd	P	/	PASS
			Pb	P	/	
			Hg	P	/	
			Cr	P	/	
			Br	NA	/	
8-7-5	WASHER (COPPER METAL)	/	Cd	P	/	PASS
			Pb	P	/	
			Hg	P	/	
			Cr	P	/	
			Br	NA	/	
8-7-6	WASHER (BLACK METAL)	/	Cd	P	/	PASS
			Pb	P	/	
			Hg	P	/	
			Cr	P	/	
			Br	NA	/	

\*\*\*\*\*  
To be continued



Tests Conducted

Part No.	Tested Components	Refer information	Restricted Substance	XRF Result	Chemical Confirmation Result	Conclusion on RoHS
8-7-7	BASE (SILVER METAL)	/	Cd	P	/	PASS
			Pb	P	/	
			Hg	P	/	
			Cr	P	/	
			Br	NA	/	
8-7-8	MAGNET	/	Cd	P	/	PASS
			Pb	P	/	
			Hg	P	/	
			Cr	P	/	
			Br	P	/	
8-7-9	COLUMN (WHITE PLASTIC)	/	Cd	P	/	PASS
			Pb	P	/	
			Hg	P	/	
			Cr	X	Cr <sup>6+</sup> : Negative	
			Br	P	/	
8-7-10	AXIS (SILVER METAL)	/	Cd	P	/	PASS
			Pb	P	/	
			Hg	P	/	
			Cr	P	/	
			Br	NA	/	
8-7-11	TAPE (YELLOW PLASTIC)	/	Cd	P	/	PASS
			Pb	P	/	
			Hg	P	/	
			Cr	P	/	
			Br	P	/	
8-7-12	WIRE (COPPER METAL)	/	Cd	P	/	PASS
			Pb	P	/	
			Hg	P	/	
			Cr	P	/	
			Br	NA	/	

\*\*\*\*\*  
To be continued





Tests Conducted

Part No.	Tested Components	Refer information	Restricted Substance	XRF Result	Chemical Confirmation Result	Conclusion on RoHS
8-7-13	RING (WHITE PLASTIC)	/	Cd	P	/	PASS
			Pb	P	/	
			Hg	P	/	
			Cr	X	Cr <sup>6+</sup> : Negative	
			Br	P	/	
8-7-14	COVER (BLACK METAL)	/	Cd	P	/	PASS
			Pb	P	/	
			Hg	P	/	
			Cr	P	/	
			Br	NA	/	
8-7-15	SCREW (SILVER METAL)	/	Cd	P	/	PASS
			Pb	P	/	
			Hg	P	/	
			Cr	P	/	
			Br	NA	/	
8-7-16	SCREW (SILVER METAL)	/	Cd	P	/	PASS
			Pb	P	/	
			Hg	P	/	
			Cr	X	Cr <sup>6+</sup> : Negative	
			Br	NA	/	
9	SAMPLE ROOM					
9-1	SAMPLE ROOM					
9-1-1	SCREW (SILVER METAL)	/	Cd	P	/	PASS
			Pb	P	/	
			Hg	P	/	
			Cr	P	/	
			Br	NA	/	
9-1-2	SNAP JOINT (BLACK METAL)	/	Cd	P	/	PASS
			Pb	P	/	
			Hg	P	/	
			Cr	P	/	
			Br	NA	/	

\*\*\*\*\*

To be continued



Tests Conducted

Part No.	Tested Components	Refer information	Restricted Substance	XRF Result	Chemical Confirmation Result	Conclusion on RoHS
9-1-3	SHEET (BLACK METAL)	/	Cd	P	/	PASS
			Pb	P	/	
			Hg	P	/	
			Cr	P	/	
			Br	NA	/	
9-1-4	FRAME (BLACK NONMETAL)	/	Cd	P	/	PASS
			Pb	P	/	
			Hg	P	/	
			Cr	X	Cr <sup>6+</sup> : Negative	
			Br	P	/	
9-1-5	SCREW (SILVER METAL)	/	Cd	P	/	PASS
			Pb	P	/	
			Hg	P	/	
			Cr	P	/	
			Br	NA	/	
9-1-6	BASE (BLACK METAL)	/	Cd	P	/	PASS
			Pb	P	/	
			Hg	P	/	
			Cr	P	/	
			Br	NA	/	
9-1-7	BASE (BLACK METAL)	/	Cd	P	/	PASS
			Pb	P	/	
			Hg	P	/	
			Cr	P	/	
			Br	NA	/	
9-1-8	NUT (SILVER METAL)	/	Cd	P	/	PASS
			Pb	P	/	
			Hg	P	/	
			Cr	P	/	
			Br	NA	/	

\*\*\*\*\*  
To be continued



Tests Conducted

Part No.	Tested Components	Refer information	Restricted Substance	XRF Result	Chemical Confirmation Result	Conclusion on RoHS
9-2	SHELL (BLACK PLASTIC)	/	Cd	P	/	PASS
			Pb	P	/	
			Hg	P	/	
			Cr	P	/	
			Br	P	/	
9-3	LENS					
9-3-1	LENS	/	Cd	P	/	PASS
			Pb	P	/	
			Hg	P	/	
			Cr	P	/	
			Br	P	/	
9-3-2	BASE (BLACK NONMETAL)	/	Cd	P	/	PASS
			Pb	P	/	
			Hg	P	/	
			Cr	X	Cr <sup>6+</sup> : Negative	
			Br	P	/	
9-4	SCREW (SILVER METAL)	/	Cd	P	/	PASS
			Pb	P	/	
			Hg	P	/	
			Cr	X	Cr <sup>6+</sup> : Negative	
			Br	NA	/	
9-5	SCREW (SILVER METAL)	/	Cd	P	/	PASS
			Pb	P	/	
			Hg	P	/	
			Cr	P	/	
			Br	NA	/	
9-6	PCB					
9-6-1	SET					
9-6-1-1	FRAME (BROWN PLASTIC)	/	Cd	P	/	PASS
			Pb	P	/	
			Hg	P	/	
			Cr	P	/	
			Br	X	PBBs=ND PBDEs=ND	

To be continued



Tests Conducted

Part No.	Tested Components	Refer information	Restricted Substance	XRF Result	Chemical Confirmation Result	Conclusion on RoHS
9-6-1-2	SUPPORT (WHITE PLASTIC)	/	Cd	P	/	PASS
			Pb	P	/	
			Hg	P	/	
			Cr	P	/	
			Br	P	/	
9-6-1-3	PIN (SILVER METAL)	/	Cd	P	/	PASS
			Pb	P	/	
			Hg	P	/	
			Cr	P	/	
			Br	NA	/	
9-6-2	PLUG (WHITE PLASTIC)	/	Cd	P	/	PASS
			Pb	P	/	
			Hg	P	/	
			Cr	P	/	
			Br	P	/	
9-6-3	PLUG					
9-6-3-1	COVER (WHITE PLASTIC)	/	Cd	P	/	PASS
			Pb	P	/	
			Hg	P	/	
			Cr	P	/	
			Br	P	/	
9-6-3-2	PIN (SILVER METAL)	/	Cd	P	/	PASS
			Pb	P	/	
			Hg	P	/	
			Cr	P	/	
			Br	NA	/	
9-6-4	SET					
9-6-4-1	COVER (SILVER METAL)	/	Cd	P	/	PASS
			Pb	P	/	
			Hg	P	/	
			Cr	P	/	
			Br	NA	/	

\*\*\*\*\*

To be continued



Tests Conducted

Part No.	Tested Components	Refer information	Restricted Substance	XRF Result	Chemical Confirmation Result	Conclusion on RoHS
9-6-4-2	SUPPORT (WHITE PLASTIC)	/	Cd	P	/	PASS
			Pb	P	/	
			Hg	P	/	
			Cr	P	/	
			Br	P	/	
9-6-4-3	PIN (SILVER METAL)	/	Cd	P	/	PASS
			Pb	P	/	
			Hg	P	/	
			Cr	P	/	
			Br	NA	/	
9-6-5	PLUG					
9-6-5-1	COVER (BLACK PLASTIC)	/	Cd	P	/	PASS
			Pb	P	/	
			Hg	P	/	
			Cr	P	/	
			Br	X	PBBs=ND PBDEs=ND	
9-6-5-2	PIN (COPPER METAL)	/	Cd	P	/	PASS
			Pb	P	/	
			Hg	P	/	
			Cr	P	/	
			Br	NA	/	
9-6-6	PLUG (BLACK PLASTIC)	/	Cd	P	/	PASS
			Pb	P	/	
			Hg	P	/	
			Cr	P	/	
			Br	P	/	
9-6-7	SWITCH					
9-6-7-1	BUTTON (WHITE PLASTIC)	/	Cd	P	/	PASS
			Pb	P	/	
			Hg	P	/	
			Cr	P	/	
			Br	P	/	

\*\*\*\*\*

To be continued



Tests Conducted

Part No.	Tested Components	Refer information	Restricted Substance	XRF Result	Chemical Confirmation Result	Conclusion on RoHS
9-6-7-2	SUPPORT (GREY PLASTIC)	/	Cd	P	/	PASS
			Pb	P	/	
			Hg	P	/	
			Cr	P	/	
			Br	P	/	
9-6-7-3	SPRING (BLACK METAL)	/	Cd	P	/	PASS
			Pb	P	/	
			Hg	P	/	
			Cr	P	/	
			Br	NA	/	
9-6-7-4	BASE (BLACK PLASTIC)	/	Cd	P	/	PASS
			Pb	P	/	
			Hg	P	/	
			Cr	P	/	
			Br	P	/	
9-6-8	TRIODE	/	Cd	P	/	PASS
			Pb	P	/	
			Hg	P	/	
			Cr	P	/	
			Br	P	/	
9-6-9	CRYSTAL OSCILLATOR	/	Cd	P	/	PASS
			Pb	P	/	
			Hg	P	/	
			Cr	P	/	
			Br	P	/	
9-6-10	BRIDGE DIODE	/	Cd	P	/	PASS
			Pb	P	/	
			Hg	P	/	
			Cr	P	/	
			Br	X	PBBs=ND PBDEs=ND	
9-6-11	SWITCH					

To be continued



Tests Conducted

Part No.	Tested Components	Refer information	Restricted Substance	XRF Result	Chemical Confirmation Result	Conclusion on RoHS
9-6-11-1	COVER (RED PLASTIC)	/	Cd	P	/	PASS
			Pb	P	/	
			Hg	P	/	
			Cr	P	/	
			Br	X	PBBs=ND PBDEs=ND	
9-6-11-2	BUTTON (WHITE PLASTIC)	/	Cd	P	/	PASS
			Pb	P	/	
			Hg	P	/	
			Cr	P	/	
			Br	P	/	
9-6-11-3	BASE (BLACK PLASTIC)	/	Cd	P	/	PASS
			Pb	P	/	
			Hg	P	/	
			Cr	P	/	
			Br	X	PBBs=ND PBDEs=ND	
9-6-12	BASE (BLACK PLASTIC)	/	Cd	P	/	PASS
			Pb	P	/	
			Hg	P	/	
			Cr	P	/	
			Br	P	/	
9-6-13	CAPACITOR	/	Cd	P	/	PASS
			Pb	P	/	
			Hg	P	/	
			Cr	P	/	
			Br	P	/	
9-6-14	CAPACITOR	/	Cd	P	/	PASS
			Pb	P	/	
			Hg	P	/	
			Cr	P	/	
			Br	P	/	

\*\*\*\*\*  
To be continued



Tests Conducted

Part No.	Tested Components	Refer information	Restricted Substance	XRF Result	Chemical Confirmation Result	Conclusion on RoHS
9-6-15	INSULATION PIECE (WHITE NONMETAL)	/	Cd	P	/	PASS
			Pb	P	/	
			Hg	P	/	
			Cr	P	/	
			Br	P	/	
9-6-16	CRYSTAL OSCILLATOR	/	Cd	P	/	PASS
			Pb	P	/	
			Hg	P	/	
			Cr	P	/	
			Br	P	/	
9-6-17	IC	/	Cd	P	/	PASS
			Pb	P	/	
			Hg	P	/	
			Cr	P	/	
			Br	P	/	
9-6-18	INDUCTANCE					
9-6-18-1	SLEEVE (BLACK PLASTIC)	/	Cd	P	/	PASS
			Pb	P	/	
			Hg	P	/	
			Cr	P	/	
			Br	X	PBBs=ND PBDEs=ND	
9-6-18-2	WIRE (COPPER METAL)	/	Cd	P	/	PASS
			Pb	P	/	
			Hg	P	/	
			Cr	P	/	
			Br	NA	/	
9-6-18-3	IRON CORE (BLACK METAL)	/	Cd	P	/	PASS
			Pb	P	/	
			Hg	P	/	
			Cr	P	/	
			Br	NA	/	

To be continued





Tests Conducted

Part No.	Tested Components	Refer information	Restricted Substance	XRF Result	Chemical Confirmation Result	Conclusion on RoHS
9-6-19	FUSE	/	Cd	P	/	PASS
			Pb	P	/	
			Hg	P	/	
			Cr	P	/	
			Br	P	/	
9-6-20	INDUCTANCE	/	Cd	P	/	PASS
			Pb	P	/	
			Hg	P	/	
			Cr	P	/	
			Br	P	/	
9-6-21	CAPACITOR	/	Cd	P	/	PASS
			Pb	P	/	
			Hg	P	/	
			Cr	P	/	
			Br	P	/	
9-6-22	DIODE	/	Cd	P	/	PASS
			Pb	P	/	
			Hg	P	/	
			Cr	P	/	
			Br	X	PBBs=ND PBDEs=ND	
9-6-23	IC	/	Cd	P	/	PASS
			Pb	P	/	
			Hg	P	/	
			Cr	P	/	
			Br	P	/	
9-6-24	CAPACITOR	/	Cd	P	/	PASS
			Pb	P	/	
			Hg	P	/	
			Cr	P	/	
			Br	P	/	

\*\*\*\*\*  
To be continued



Tests Conducted

Part No.	Tested Components	Refer information	Restricted Substance	XRF Result	Chemical Confirmation Result	Conclusion on RoHS
9-6-25	RESISTOR	/	Cd	P	/	PASS
			Pb	P	/	
			Hg	P	/	
			Cr	P	/	
			Br	P	/	
9-6-26	TRIODE	/	Cd	P	/	PASS
			Pb	P	/	
			Hg	P	/	
			Cr	P	/	
			Br	P	/	
9-6-27	PCB	/	Cd	P	/	PASS
			Pb	P	/	
			Hg	P	/	
			Cr	P	/	
			Br	X	PBBs=ND PBDEs=ND	
9-7	COVER (BLACK METAL)	/	Cd	P	/	PASS
			Pb	P	/	
			Hg	P	/	
			Cr	P	/	
			Br	NA	/	
10	SAMPLE RECEIVER					
10-1	POTENTIOMETER	/	Cd	P	/	PASS
			Pb	P	/	
			Hg	P	/	
			Cr	P	/	
			Br	P	/	
10-2	CAPACITOR	/	Cd	P	/	PASS
			Pb	P	/	
			Hg	P	/	
			Cr	P	/	
			Br	X	PBBs=ND PBDEs=ND	

To be continued



Tests Conducted

Part No.	Tested Components	Refer information	Restricted Substance	XRF Result	Chemical Confirmation Result	Conclusion on RoHS
10-3	DIODE	/	Cd	P	/	PASS
			Pb	X	Pb=115700ppm(#3)	
			Hg	P	/	
			Cr	P	/	
			Br	P	/	
10-4	TRIODE	/	Cd	P	/	PASS
			Pb	P	/	
			Hg	P	/	
			Cr	P	/	
			Br	X	PBBs=ND PBDEs=ND	
10-5	CAPACITOR					
10-5-1	SHELL (BLACK PLASTIC)	/	Cd	P	/	PASS
			Pb	P	/	
			Hg	P	/	
			Cr	P	/	
			Br	P	/	
10-5-2	INNER SHELL (SILVER METAL)	/	Cd	P	/	PASS
			Pb	P	/	
			Hg	P	/	
			Cr	P	/	
			Br	NA	/	
10-5-3	MAT (BLACK PLASTIC)	/	Cd	P	/	PASS
			Pb	P	/	
			Hg	P	/	
			Cr	P	/	
			Br	P	/	
10-5-4	PIN (SILVER METAL)	/	Cd	P	/	PASS
			Pb	P	/	
			Hg	P	/	
			Cr	P	/	
			Br	NA	/	

To be continued



Tests Conducted

Part No.	Tested Components	Refer information	Restricted Substance	XRF Result	Chemical Confirmation Result	Conclusion on RoHS
10-5-5	ELECTROLYTIC PAPER	/	Cd	P	/	PASS
			Pb	P	/	
			Hg	P	/	
			Cr	P	/	
			Br	P	/	
10-6	SENSOR	/	Cd	P	/	PASS
			Pb	P	/	
			Hg	P	/	
			Cr	P	/	
			Br	P	/	
10-7	IC	/	Cd	P	/	PASS
			Pb	P	/	
			Hg	P	/	
			Cr	P	/	
			Br	X	PBBs=ND PBDEs=ND	
10-8	IC	/	Cd	P	/	PASS
			Pb	P	/	
			Hg	P	/	
			Cr	P	/	
			Br	P	/	
10-9	TRIODE	/	Cd	P	/	PASS
			Pb	P	/	
			Hg	P	/	
			Cr	P	/	
			Br	X	PBBs=ND PBDEs=ND	
10-10	CAPACITOR	/	Cd	P	/	PASS
			Pb	P	/	
			Hg	P	/	
			Cr	P	/	
			Br	P	/	

\*\*\*\*\*  
To be continued



Tests Conducted

Part No.	Tested Components	Refer information	Restricted Substance	XRF Result	Chemical Confirmation Result	Conclusion on RoHS
10-11	RESISTOR	/	Cd	P	/	PASS
			Pb	P	/	
			Hg	P	/	
			Cr	P	/	
			Br	P	/	
10-12	PCB	/	Cd	P	/	PASS
			Pb	P	/	
			Hg	P	/	
			Cr	P	/	
			Br	X	PBBs=ND PBDEs=ND	
10-13	COVER (SILVER METAL)	/	Cd	P	/	PASS
			Pb	P	/	
			Hg	P	/	
			Cr	P	/	
			Br	NA	/	
11	INTERIOR WIRE					
11-1	BUNDLE TAPE (WHITE PLASTIC)	/	Cd	P	/	PASS
			Pb	P	/	
			Hg	P	/	
			Cr	P	/	
			Br	P	/	
11-2	CLAMP (WHITE PLASTIC)	/	Cd	P	/	PASS
			Pb	P	/	
			Hg	P	/	
			Cr	P	/	
			Br	P	/	
11-3	DOUBLE FACED ADHESIVE TAPE	/	Cd	P	/	PASS
			Pb	P	/	
			Hg	P	/	
			Cr	P	/	
			Br	P	/	

\*\*\*\*\*  
To be continued



Tests Conducted

Part No.	Tested Components	Refer information	Restricted Substance	XRF Result	Chemical Confirmation Result	Conclusion on RoHS
11-4	BASE (WHITE PLASTIC)	/	Cd	P	/	PASS
			Pb	P	/	
			Hg	P	/	
			Cr	P	/	
			Br	P	/	
11-5	CLAMP (GREY PLASTIC)	/	Cd	P	/	PASS
			Pb	P	/	
			Hg	P	/	
			Cr	P	/	
			Br	P	/	
11-6	INDUCTANCE					
11-6-1	COVER (BLACK PLASTIC)	/	Cd	P	/	PASS
			Pb	P	/	
			Hg	P	/	
			Cr	P	/	
			Br	P	/	
11-6-2	IRON CORE (BLACK METAL)	/	Cd	P	/	PASS
			Pb	P	/	
			Hg	P	/	
			Cr	P	/	
			Br	NA	/	
11-7	IRON CORE (BLACK METAL)	/	Cd	P	/	PASS
			Pb	P	/	
			Hg	P	/	
			Cr	P	/	
			Br	NA	/	
11-8	SET					
11-8-1	COVER (SILVER METAL)	/	Cd	P	/	PASS
			Pb	P	/	
			Hg	P	/	
			Cr	P	/	
			Br	NA	/	

\*\*\*\*\*

To be continued



Tests Conducted

Part No.	Tested Components	Refer information	Restricted Substance	XRF Result	Chemical Confirmation Result	Conclusion on RoHS
11-8-2	PLUG (BLUE PLASTIC)	/	Cd	P	/	PASS
			Pb	P	/	
			Hg	P	/	
			Cr	P	/	
			Br	X	PBBs=ND PBDEs=ND	
11-8-3	COVER (BLUE PLASTIC)	/	Cd	P	/	PASS
			Pb	P	/	
			Hg	P	/	
			Cr	P	/	
			Br	X	PBBs=ND PBDEs=ND	
11-8-4	CAP (BLUE PLASTIC)	/	Cd	P	/	PASS
			Pb	P	/	
			Hg	P	/	
			Cr	P	/	
			Br	X	PBBs=ND PBDEs=ND	
11-8-5	COVER (BLUE PLASTIC)	/	Cd	P	/	PASS
			Pb	P	/	
			Hg	P	/	
			Cr	P	/	
			Br	X	PBBs=ND PBDEs=ND	
11-9	PLUG COVER (BLACK PLASTIC)	/	Cd	P	/	PASS
			Pb	P	/	
			Hg	P	/	
			Cr	P	/	
			Br	X	PBBs=ND PBDEs=ND	
11-10	CONCENTRATOR (BLUE PLASTIC)	/	Cd	P	/	PASS
			Pb	P	/	
			Hg	P	/	
			Cr	P	/	
			Br	P	/	

\*\*\*\*\*  
To be continued



Tests Conducted

Part No.	Tested Components	Refer information	Restricted Substance	XRF Result	Chemical Confirmation Result	Conclusion on RoHS
11-11	SET (GREY PLASTIC)	/	Cd	P	/	PASS
			Pb	P	/	
			Hg	P	/	
			Cr	P	/	
			Br	P	/	
11-12	CLAMP (WHITE PLASTIC)	/	Cd	P	/	PASS
			Pb	P	/	
			Hg	P	/	
			Cr	P	/	
			Br	P	/	
11-13	SET (WHITE PLASTIC)	/	Cd	P	/	PASS
			Pb	P	/	
			Hg	P	/	
			Cr	P	/	
			Br	P	/	
11-14	SET (BLACK PLASTIC)	/	Cd	P	/	PASS
			Pb	P	/	
			Hg	P	/	
			Cr	P	/	
			Br	X	PBBs=ND PBDEs=ND	
11-15	SLEEVE (RED PLASTIC)	/	Cd	P	/	PASS
			Pb	P	/	
			Hg	P	/	
			Cr	P	/	
			Br	P	/	
11-16	SLEEVE (BLUE PLASTIC)	/	Cd	P	/	PASS
			Pb	P	/	
			Hg	P	/	
			Cr	P	/	
			Br	P	/	

\*\*\*\*\*  
To be continued





Tests Conducted

Part No.	Tested Components	Refer information	Restricted Substance	XRF Result	Chemical Confirmation Result	Conclusion on RoHS
11-17	TAPE (BLACK NONMETAL)	/	Cd	P	/	PASS
			Pb	P	/	
			Hg	P	/	
			Cr	P	/	
			Br	P	/	
11-18	SLEEVE (BLACK PLASTIC)	/	Cd	P	/	PASS
			Pb	P	/	
			Hg	P	/	
			Cr	P	/	
			Br	P	/	
11-19	SLEEVE (GREY NONMETAL)	/	Cd	P	/	PASS
			Pb	P	/	
			Hg	P	/	
			Cr	X	Cr <sup>6+</sup> : Negative	
			Br	P	/	
11-20	SIGNAL STREET	/	Cd	P	/	PASS
			Pb	P	/	
			Hg	P	/	
			Cr	P	/	
			Br	X	PBBs=ND PBDEs=ND	
11-21	LEAD SKIN (GREY PLASTIC)	/	Cd	P	/	PASS
			Pb	P	/	
			Hg	P	/	
			Cr	P	/	
			Br	P	/	
11-22	WIRE (SILVER METAL)	/	Cd	P	/	PASS
			Pb	P	/	
			Hg	P	/	
			Cr	P	/	
			Br	NA	/	

\*\*\*\*\*  
To be continued



Tests Conducted

Part No.	Tested Components	Refer information	Restricted Substance	XRF Result	Chemical Confirmation Result	Conclusion on RoHS
11-23	WIRE (COPPER METAL)	/	Cd	P	/	PASS
			Pb	P	/	
			Hg	P	/	
			Cr	P	/	
			Br	NA	/	
11-24	LEAD SKIN (GREEN PLASTIC)	/	Cd	P	/	PASS
			Pb	P	/	
			Hg	P	/	
			Cr	P	/	
			Br	P	/	
11-25	LEAD SKIN (BROWN PLASTIC)	/	Cd	P	/	PASS
			Pb	P	/	
			Hg	P	/	
			Cr	P	/	
			Br	P	/	
11-26	LEAD SKIN (BLACK PLASTIC)	/	Cd	P	/	PASS
			Pb	P	/	
			Hg	P	/	
			Cr	P	/	
			Br	P	/	
11-27	LEAD SKIN (BLUE PLASTIC)	/	Cd	P	/	PASS
			Pb	P	/	
			Hg	P	/	
			Cr	P	/	
			Br	P	/	
11-28	LEAD SKIN (RED PLASTIC)	/	Cd	P	/	PASS
			Pb	P	/	
			Hg	P	/	
			Cr	P	/	
			Br	P	/	

\*\*\*\*\*  
To be continued



Tests Conducted

Part No.	Tested Components	Refer information	Restricted Substance	XRF Result	Chemical Confirmation Result	Conclusion on RoHS
11-29	LEAD SKIN (BROWN PLASTIC)	/	Cd	P	/	PASS
			Pb	P	/	
			Hg	P	/	
			Cr	P	/	
			Br	P	/	
11-30	LEAD SKIN (YELLOW PLASTIC)	/	Cd	P	/	PASS
			Pb	P	/	
			Hg	P	/	
			Cr	P	/	
			Br	P	/	
11-31	LEAD SKIN (RED PLASTIC)	/	Cd	P	/	PASS
			Pb	P	/	
			Hg	P	/	
			Cr	P	/	
			Br	P	/	
11-32	LEAD SKIN (BLUE PLASTIC)	/	Cd	P	/	PASS
			Pb	P	/	
			Hg	P	/	
			Cr	P	/	
			Br	P	/	
11-33	LEAD SKIN (BROWN PLASTIC)	/	Cd	P	/	PASS
			Pb	P	/	
			Hg	P	/	
			Cr	P	/	
			Br	P	/	
11-34	LEAD SKIN (GREEN PLASTIC)	/	Cd	P	/	PASS
			Pb	P	/	
			Hg	P	/	
			Cr	P	/	
			Br	P	/	

\*\*\*\*\*  
To be continued



Tests Conducted

Part No.	Tested Components	Refer information	Restricted Substance	XRF Result	Chemical Confirmation Result	Conclusion on RoHS
11-35	LEAD SKIN (BLACK PLASTIC)	/	Cd	P	/	PASS
			Pb	P	/	
			Hg	P	/	
			Cr	P	/	
			Br	P	/	
11-36	LEAD SKIN (YELLOW PLASTIC)	/	Cd	P	/	PASS
			Pb	P	/	
			Hg	P	/	
			Cr	P	/	
			Br	P	/	
11-37	LEAD SKIN (YELLOW PLASTIC)	/	Cd	P	/	PASS
			Pb	P	/	
			Hg	P	/	
			Cr	P	/	
			Br	P	/	
11-38	LEAD SKIN (BLUE PLASTIC)	/	Cd	P	/	PASS
			Pb	P	/	
			Hg	P	/	
			Cr	P	/	
			Br	P	/	
11-39	LEAD SKIN (RED PLASTIC)	/	Cd	P	/	PASS
			Pb	P	/	
			Hg	P	/	
			Cr	P	/	
			Br	P	/	
11-40	LEAD SKIN (RED PLASTIC)	/	Cd	P	/	PASS
			Pb	P	/	
			Hg	P	/	
			Cr	P	/	
			Br	P	/	

\*\*\*\*\*  
To be continued



Tests Conducted

Part No.	Tested Components	Refer information	Restricted Substance	XRF Result	Chemical Confirmation Result	Conclusion on RoHS
11-41	LEAD SKIN (WHITE PLASTIC)	/	Cd	P	/	PASS
			Pb	P	/	
			Hg	P	/	
			Cr	P	/	
			Br	P	/	
11-42	LEAD SKIN (GREEN PLASTIC)	/	Cd	P	/	PASS
			Pb	P	/	
			Hg	P	/	
			Cr	P	/	
			Br	X	PBBs=ND PBDEs=ND	
11-43	LEAD SKIN (YELLOW PLASTIC)	/	Cd	P	/	PASS
			Pb	P	/	
			Hg	P	/	
			Cr	P	/	
			Br	X	PBBs=ND PBDEs=ND	
11-44	LEAD SKIN (BLUE PLASTIC)	/	Cd	P	/	PASS
			Pb	P	/	
			Hg	P	/	
			Cr	P	/	
			Br	X	PBBs=ND PBDEs=ND	
11-45	LEAD SKIN (RED PLASTIC)	/	Cd	P	/	PASS
			Pb	P	/	
			Hg	P	/	
			Cr	P	/	
			Br	X	PBBs=ND PBDEs=ND	
11-46	LEAD SKIN (BLUE PLASTIC)	/	Cd	P	/	PASS
			Pb	P	/	
			Hg	P	/	
			Cr	P	/	
			Br	P	/	

\*\*\*\*\*  
To be continued



Tests Conducted

Part No.	Tested Components	Refer information	Restricted Substance	XRF Result	Chemical Confirmation Result	Conclusion on RoHS
11-47	LEAD SKIN (BLACK PLASTIC)	/	Cd	P	/	PASS
			Pb	P	/	
			Hg	P	/	
			Cr	P	/	
			Br	P	/	
11-48	LEAD SKIN (WHITE PLASTIC)	/	Cd	P	/	PASS
			Pb	P	/	
			Hg	P	/	
			Cr	P	/	
			Br	P	/	
12	BASE					
12-1	SCREW (SILVER METAL)	/	Cd	P	/	PASS
			Pb	P	/	
			Hg	P	/	
			Cr	X	Cr <sup>6+</sup> : Negative	
			Br	NA	/	
12-2	FOOT (BLACK PLASTIC)	/	Cd	P	/	PASS
			Pb	P	/	
			Hg	P	/	
			Cr	P	/	
			Br	P	/	
12-3	FOAM RUBBER (BLACK NONMETAL)	/	Cd	P	/	PASS
			Pb	P	/	
			Hg	P	/	
			Cr	P	/	
			Br	P	/	
12-4	BASE (BLACK METAL)	/	Cd	P	/	PASS
			Pb	P	/	
			Hg	P	/	
			Cr	P	/	
			Br	NA	/	

To be continued



Tests Conducted

Part No.	Tested Components	Refer information	Restricted Substance	XRF Result	Chemical Confirmation Result	Conclusion on RoHS
12-5	BASE (BLACK METAL)	/	Cd	P	/	PASS
			Pb	P	/	
			Hg	P	/	
			Cr	P	/	
			Br	NA	/	
DIFFERENT PARTS						
D1	PCB					
D1-1	WASHER (WHITE NONMETAL)	/	Cd	P	/	PASS
			Pb	P	/	
			Hg	P	/	
			Cr	P	/	
			Br	P	/	
D1-2	IC	/	Cd	P	/	PASS
			Pb	P	/	
			Hg	P	/	
			Cr	P	/	
			Br	X	PBBs=ND PBDEs=ND	
D1-3	RESISTOR	/	Cd	P	/	PASS
			Pb	P	/	
			Hg	P	/	
			Cr	P	/	
			Br	P	/	
D1-4	SUPPORT (BLACK METAL)	/	Cd	P	/	PASS
			Pb	P	/	
			Hg	P	/	
			Cr	P	/	
			Br	NA	/	
D1-5	PCB	/	Cd	P	/	PASS
			Pb	P	/	
			Hg	P	/	
			Cr	P	/	
			Br	X	PBBs=ND PBDEs=ND	

\*\*\*\*\*

To be continued



Tests Conducted

Part No.	Tested Components	Refer information	Restricted Substance	XRF Result	Chemical Confirmation Result	Conclusion on RoHS
D2	PCB					
D2-1	COVER					
D2-1-1	COVER (SILVER METAL)	/	Cd	P	/	PASS
			Pb	P	/	
			Hg	P	/	
			Cr	X	Cr <sup>6+</sup> : Negative	
			Br	NA	/	
D2-1-2	SPRING (SILVER METAL)	/	Cd	P	/	PASS
			Pb	P	/	
			Hg	P	/	
			Cr	P	/	
			Br	NA	/	
D2-1-3	COVER (BLACK PLASTIC)	/	Cd	P	/	PASS
			Pb	P	/	
			Hg	P	/	
			Cr	P	/	
			Br	P	/	
D2-2	BATTERY BOX					
D2-2-1	COVER (WHITE PLASTIC)	/	Cd	P	/	PASS
			Pb	P	/	
			Hg	P	/	
			Cr	P	/	
			Br	P	/	
D2-2-2	CONTACTED SHEET (SILVER METAL)	/	Cd	P	/	PASS
			Pb	P	/	
			Hg	P	/	
			Cr	P	/	
			Br	NA	/	
D2-3	SET					

\*\*\*\*\*  
To be continued





Tests Conducted

Part No.	Tested Components	Refer information	Restricted Substance	XRF Result	Chemical Confirmation Result	Conclusion on RoHS
D2-3-1	SET (WHITE PLASTIC)	/	Cd	P	/	PASS
			Pb	P	/	
			Hg	P	/	
			Cr	P	/	
			Br	P	/	
D2-3-2	SUPPORT (BLACK PLASTIC)	/	Cd	P	/	PASS
			Pb	P	/	
			Hg	P	/	
			Cr	P	/	
			Br	P	/	
D2-4	IC	/	Cd	P	/	PASS
			Pb	P	/	
			Hg	P	/	
			Cr	P	/	
			Br	P	/	
D2-5	BUNDLE TAPE (BLACK NONMETAL)	/	Cd	P	/	PASS
			Pb	P	/	
			Hg	P	/	
			Cr	P	/	
			Br	X	PBBs=ND PBDEs=ND	
D2-6	SCREEN					
D2-6-1	FRAME (SILVER METAL)	/	Cd	P	/	PASS
			Pb	P	/	
			Hg	P	/	
			Cr	X	Cr <sup>6+</sup> : Negative	
			Br	NA	/	
D2-6-2	FILM (TRANSPARENT PLASTIC)	/	Cd	P	/	PASS
			Pb	P	/	
			Hg	P	/	
			Cr	P	/	
			Br	P	/	

To be continued



Tests Conducted

Part No.	Tested Components	Refer information	Restricted Substance	XRF Result	Chemical Confirmation Result	Conclusion on RoHS
D2-6-3	COVER (TRANSPARENT NONMETAL)	/	Cd	P	/	PASS
			Pb	P	/	
			Hg	P	/	
			Cr	P	/	
			Br	P	/	
D2-6-4	PCB	/	Cd	P	/	PASS
			Pb	P	/	
			Hg	P	/	
			Cr	P	/	
			Br	P	/	
D2-6-5	BASE (SILVER METAL)	/	Cd	P	/	PASS
			Pb	P	/	
			Hg	P	/	
			Cr	P	/	
			Br	NA	/	
D2-6-6	FRAME (WHITE PLASTIC)	/	Cd	P	/	PASS
			Pb	P	/	
			Hg	P	/	
			Cr	P	/	
			Br	P	/	
D2-6-7	LED	/	Cd	P	/	PASS
			Pb	P	/	
			Hg	P	/	
			Cr	P	/	
			Br	X	PBBs=ND PBDEs=ND	
D2-6-8	TAPE (BLACK PLASTIC)	/	Cd	P	/	PASS
			Pb	P	/	
			Hg	P	/	
			Cr	P	/	
			Br	P	/	

To be continued



Tests Conducted

Part No.	Tested Components	Refer information	Restricted Substance	XRF Result	Chemical Confirmation Result	Conclusion on RoHS
D2-6-9	FILM (WHITE PLASTIC)	/	Cd	P	/	PASS
			Pb	P	/	
			Hg	P	/	
			Cr	P	/	
			Br	P	/	
D2-6-10	FILM (TRANSPARENT NONMETAL)	/	Cd	P	/	PASS
			Pb	P	/	
			Hg	P	/	
			Cr	P	/	
			Br	P	/	
D2-6-11	FILM (SILVER NONMETAL)	/	Cd	P	/	PASS
			Pb	P	/	
			Hg	P	/	
			Cr	P	/	
			Br	P	/	
D2-6-12	FILM (WHITE PLASTIC)	/	Cd	P	/	PASS
			Pb	P	/	
			Hg	P	/	
			Cr	P	/	
			Br	P	/	
D2-6-13	LCD	/	Cd	P	/	PASS
			Pb	P	/	
			Hg	P	/	
			Cr	P	/	
			Br	P	/	
D2-7	PCB	/	Cd	P	/	PASS
			Pb	P	/	
			Hg	P	/	
			Cr	P	/	
			Br	X	PBBs=ND PBDEs=ND	

To be continued



Tests Conducted

Part No.	Tested Components	Refer information	Restricted Substance	XRF Result	Chemical Confirmation Result	Conclusion on RoHS
D3	CAP (BLACK PLASTIC)	/	Cd	P	/	PASS
			Pb	P	/	
			Hg	P	/	
			Cr	P	/	
			Br	P	/	
D4	IC	/	Cd	P	/	PASS
			Pb	P	/	
			Hg	P	/	
			Cr	P	/	
			Br	P	/	
D5	SCREW (SILVER METAL)	/	Cd	P	/	PASS
			Pb	P	/	
			Hg	P	/	
			Cr	X	Cr <sup>6+</sup> : Negative	
			Br	NA	/	
D6	TAPE (YELLOW PLASTIC)	/	Cd	P	/	PASS
			Pb	P	/	
			Hg	P	/	
			Cr	P	/	
			Br	P	/	
D7	CAP (BLACK PLASTIC)	/	Cd	P	/	PASS
			Pb	P	/	
			Hg	P	/	
			Cr	P	/	
			Br	P	/	
D8	COVER (BLACK PLASTIC)	/	Cd	P	/	PASS
			Pb	P	/	
			Hg	P	/	
			Cr	P	/	
			Br	P	/	

\*\*\*\*\*  
To be continued



Tests Conducted

Part No.	Tested Components	Refer information	Restricted Substance	XRF Result	Chemical Confirmation Result	Conclusion on RoHS
D9	BASE (SILVER METAL)	/	Cd	P	/	PASS
			Pb	P	/	
			Hg	P	/	
			Cr	P	/	
			Br	NA	/	
D10	BASE (SILVER METAL)	/	Cd	P	/	PASS
			Pb	P	/	
			Hg	P	/	
			Cr	X	Cr <sup>6+</sup> : Negative	
			Br	NA	/	
D11	COVER (SILVER METAL)	/	Cd	P	/	PASS
			Pb	P	/	
			Hg	P	/	
			Cr	X	Cr <sup>6+</sup> : Negative	
			Br	NA	/	
D12	COVER (SILVER METAL)	/	Cd	P	/	PASS
			Pb	P	/	
			Hg	P	/	
			Cr	P	/	
			Br	NA	/	
D13	LASER HEAD					
D13-1	COVER (BLACK PLASTIC)	/	Cd	P	/	PASS
			Pb	P	/	
			Hg	P	/	
			Cr	P	/	
			Br	P	/	
D13-2	NUT (SILVER METAL)	/	Cd	P	/	PASS
			Pb	P	/	
			Hg	P	/	
			Cr	P	/	
			Br	NA	/	

To be continued



Tests Conducted

Part No.	Tested Components	Refer information	Restricted Substance	XRF Result	Chemical Confirmation Result	Conclusion on RoHS
D13-3	COVER (SILVER METAL)	/	Cd	P	/	PASS
			Pb	P	/	
			Hg	P	/	
			Cr	P	/	
			Br	NA	/	
D13-4	WASHER (WHITE PLASTIC)	/	Cd	P	/	PASS
			Pb	P	/	
			Hg	P	/	
			Cr	P	/	
			Br	P	/	
D13-5	SPRING (SILVER METAL)	/	Cd	P	/	PASS
			Pb	P	/	
			Hg	P	/	
			Cr	P	/	
			Br	NA	/	
D13-6	SPRING (SILVER METAL)	/	Cd	P	/	PASS
			Pb	P	/	
			Hg	P	/	
			Cr	P	/	
			Br	NA	/	
D13-7	CONTACTED SHEET (COPPER METAL)	/	Cd	P	/	PASS
			Pb	P	/	
			Hg	P	/	
			Cr	P	/	
			Br	NA	/	
D14	SWITCH					
D14-1	BUTTON (SILVER METAL)	/	Cd	P	/	PASS
			Pb	X	Pb=25440ppm(#1)	
			Hg	P	/	
			Cr	P	/	
			Br	NA	/	

To be continued



Tests Conducted

Part No.	Tested Components	Refer information	Restricted Substance	XRF Result	Chemical Confirmation Result	Conclusion on RoHS
D14-2	COVER (ORANGE PLASTIC)	/	Cd	P	/	PASS
			Pb	P	/	
			Hg	P	/	
			Cr	P	/	
			Br	X	PBBs=ND PBDEs=ND	
D14-3	SPRING (SILVER METAL)	/	Cd	P	/	PASS
			Pb	P	/	
			Hg	P	/	
			Cr	X	Cr <sup>6+</sup> : Negative	
			Br	NA	/	
D14-4	SUPPORT (WHITE PLASTIC)	/	Cd	P	/	PASS
			Pb	P	/	
			Hg	P	/	
			Cr	P	/	
			Br	X	PBBs=ND PBDEs=ND	
D14-5	CONTACTED SHEET (SILVER METAL)	/	Cd	P	/	PASS
			Pb	P	/	
			Hg	P	/	
			Cr	P	/	
			Br	NA	/	
D15	LED	/	Cd	P	/	PASS
			Pb	P	/	
			Hg	P	/	
			Cr	P	/	
			Br	P	/	
D16	PLUG	/	Cd	P	/	PASS
			Pb	P	/	
			Hg	P	/	
			Cr	P	/	
			Br	X	PBBs=ND PBDEs=ND	
D17	BATTERY BOX					

To be continued



Tests Conducted

Part No.	Tested Components	Refer information	Restricted Substance	XRF Result	Chemical Confirmation Result	Conclusion on RoHS
D17-1	COVER (SILVER METAL)	/	Cd	P	/	PASS
			Pb	P	/	
			Hg	P	/	
			Cr	P	/	
			Br	NA	/	
D17-2	COVER (BLACK PLASTIC)	/	Cd	P	/	PASS
			Pb	P	/	
			Hg	P	/	
			Cr	P	/	
			Br	P	/	
D17-3	CONTACTED SHEET (SILVER METAL)	/	Cd	P	/	PASS
			Pb	P	/	
			Hg	P	/	
			Cr	P	/	
			Br	NA	/	
D18	MOTOR					
D18-1	COVER (SILVER METAL)	/	Cd	P	/	PASS
			Pb	P	/	
			Hg	P	/	
			Cr	P	/	
			Br	NA	/	
D18-2	PIN (SILVER METAL)	/	Cd	P	/	PASS
			Pb	P	/	
			Hg	P	/	
			Cr	P	/	
			Br	NA	/	
D18-3	GEAR (WHITE PLASTIC)	/	Cd	P	/	PASS
			Pb	P	/	
			Hg	P	/	
			Cr	P	/	
			Br	P	/	

To be continued





Tests Conducted

Part No.	Tested Components	Refer information	Restricted Substance	XRF Result	Chemical Confirmation Result	Conclusion on RoHS
D18-4	SILICON STEEL SHEET (GREY METAL)	/	Cd	P	/	PASS
			Pb	P	/	
			Hg	P	/	
			Cr	P	/	
			Br	NA	/	
D18-5	COVER (SILVER METAL)	/	Cd	P	/	PASS
			Pb	P	/	
			Hg	P	/	
			Cr	P	/	
			Br	NA	/	
D18-6	WASHER (SILVER METAL)	/	Cd	P	/	PASS
			Pb	P	/	
			Hg	P	/	
			Cr	X	Cr <sup>6+</sup> : Negative	
			Br	NA	/	
D18-7	COVER (BLUE PLASTIC)	/	Cd	P	/	PASS
			Pb	P	/	
			Hg	P	/	
			Cr	P	/	
			Br	X	PBBs=ND PBDEs=ND	
D18-8	GLUE (YELLOW PLASTIC)	/	Cd	P	/	PASS
			Pb	P	/	
			Hg	P	/	
			Cr	P	/	
			Br	P	/	
D19	PCB					
D19-1	COVER (SILVER METAL)	/	Cd	P	/	PASS
			Pb	P	/	
			Hg	P	/	
			Cr	X	Cr <sup>6+</sup> : Negative	
			Br	NA	/	

To be continued



Tests Conducted

Part No.	Tested Components	Refer information	Restricted Substance	XRF Result	Chemical Confirmation Result	Conclusion on RoHS
D19-2	CIRCLIP (SILVER METAL)	/	Cd	P	/	PASS
			Pb	P	/	
			Hg	P	/	
			Cr	X	Cr <sup>6+</sup> : Negative	
			Br	NA	/	
D19-3	TUBE (WHITE PLASTIC)	/	Cd	P	/	PASS
			Pb	P	/	
			Hg	P	/	
			Cr	P	/	
			Br	P	/	
D19-4	PLATE (WHITE PLASTIC)	/	Cd	P	/	PASS
			Pb	P	/	
			Hg	P	/	
			Cr	P	/	
			Br	P	/	
D19-5	PLUG (BLACK PLASTIC)	/	Cd	P	/	PASS
			Pb	P	/	
			Hg	P	/	
			Cr	P	/	
			Br	X	PBBs=ND PBDEs=ND	
D19-6	IC	/	Cd	P	/	PASS
			Pb	P	/	
			Hg	P	/	
			Cr	P	/	
			Br	P	/	
D19-7	SWITCH (BLACK PLASTIC)	/	Cd	P	/	PASS
			Pb	P	/	
			Hg	P	/	
			Cr	P	/	
			Br	P	/	

\*\*\*\*\*  
To be continued



Tests Conducted

Part No.	Tested Components	Refer information	Restricted Substance	XRF Result	Chemical Confirmation Result	Conclusion on RoHS
D19-8	PCB	/	Cd	P	/	PASS
			Pb	X	Pb=324ppm	
			Hg	P	/	
			Cr	P	/	
			Br	X	PBBs=ND PBDEs=ND	
D19-9	COVER (SILVER METAL)	/	Cd	P	/	PASS
			Pb	P	/	
			Hg	P	/	
			Cr	P	/	
			Br	NA	/	

Remark: P = pass (Below the lower screening limit of table (B))  
 X = inconclusive result (Further chemical test was suggested (see table (B).)  
 NA = not applicable  
 ND = Not Detected  
 ppm = Parts per million = mg/kg

Negative = A negative test result indicated the absorbance value of testing sample solution for Cr(VI) testing is less than the absorbance value of the 0.10 µg/cm<sup>2</sup> equivalent comparison standard solution, the Cr(VI) concentration is below the limit of quantification, then the sample is considered to be negative for Cr(VI).

(#1) = As claimed by the declaration submitted by the client, the Lead content of the components is coming from copper alloy, the limit for Lead is 40,000ppm.

(#2) = According to the client's statement, the Cadmium content of the component is coming from the constituent of electrical contacts. According to EU RoHS Directive, Cadmium in electrical contacts of this component can be exempted.

(#3) = As claimed by the declaration submitted by the client, the Lead content of the components is coming from the constituent of glass or ceramic other than dielectric ceramic in capacitors, e.g. piezoelectronic devices, or a glass or ceramic matrix compound of the electrical and electronic component only. According to the RoHS recast directive 2011/65/EU, Lead in this component can be exempted.

\*\*\*\*\*

To be continued



Tests Conducted

(B) XRF screening limits in mg/kg for regulated elements in various matrices.

Element	Polymer materials	Metallic materials	Composite materials
Cd	$P \leq 70 < X < 130 \leq F$	$P \leq 70 < X < 130 \leq F$	$P \leq 70 < X < 150 \leq F$
Pb	$P \leq 700 < X < 1300 \leq F$	$P \leq 700 < X < 1300 \leq F$	$P \leq 500 < X < 1500 \leq F$
Hg	$P \leq 700 < X < 1300 \leq F$	$P \leq 700 < X < 1300 \leq F$	$P \leq 500 < X < 1500 \leq F$
Cr	$P \leq 700 < X$	$P \leq 700 < F$	$P \leq 500 < X$
Br	$P \leq 300 < X$	Not applicable	$P \leq 250 < X$

(C) Estimated detection limits in mg/kg for regulated elements in various matrices.

Element	Polymer materials	Metallic materials	Composite materials
Cd	50	70	70
Pb	100	200	200
Hg	100	200	200
Cr	100	200	200
Br	200	Not applicable	200

\*\*\*\*\*  
**Disclaimers:**

**This XRF screening report is for reference purposes only. The applicant shall make its/his/her own judgment as to whether the information provided in this XRF screening report is sufficient for its/his/her purposes.**

**The results shown in this XRF screening report will differ based on various factors, including but not limited to, the sample size, thickness, area, surface flatness, equipment parameters and matrix effect (e.g. plastic, rubber, metal, glass, ceramic etc.). Further wet chemical pre-treatment with relevant chemical equipment analysis is required to obtain quantitative data.**

\*\*\*\*\*  
 To be continued



Tests Conducted

(D) Chemical confirmation test methods:

Testing item	Testing method	Reporting limit
Cadmium (Cd) content	With reference to IEC 62321-5 Edition 1.0: 2013, by acid digestion until the tested sample was totally dissolved, and determined by ICP-OES.	2 mg/kg
Lead (Pb) content	With reference to IEC 62321-5 Edition 1.0: 2013, by acid digestion until the tested sample was totally dissolved, and determined by ICP-OES.	2 mg/kg
Chromium (VI) (Cr <sup>6+</sup> ) Content	With reference to IEC 62321-7-1 Edition 1.0:2015, by boiling water extraction and determined by UV-VIS Spectrophotometer.	Positive(>0.13 µg/cm <sup>2</sup> ) / Negative(<0.10 µg/cm <sup>2</sup> ) / Inconclusive(0.10µg/cm <sup>2</sup> --0.13 µg/cm <sup>2</sup> )
Polybrominated Biphenyls (PBBs)& Polybrominated Diphenyl Ethers (PBDEs) Content	With reference to IEC 62321-6 Edition 1.0:2015, by solvent extraction and determined by GC/MS and further HPLC confirmation when necessary	5 mg/kg

(E) RoHS requirement

Restricted substances	Limits
Cadmium (Cd)	0.01% (100 ppm)
Lead (Pb)	0.1% (1000 ppm)
Mercury (Hg)	0.1% (1000 ppm)
Chromium (VI) (Cr <sup>6+</sup> )	0.1% (1000 ppm)
Polybrominated biphenyls (PBBs)	0.1% (1000 ppm)
Polybrominated diphenyl ethers (PBDEs)	0.1% (1000 ppm)

The above limits were quoted from RoHS Directive 2011/65/EU.

Date sample received: Oct. 30, 2018 & Dec. 26, 2018

Testing period: Oct. 30, 2018 To Jan. 03, 2019

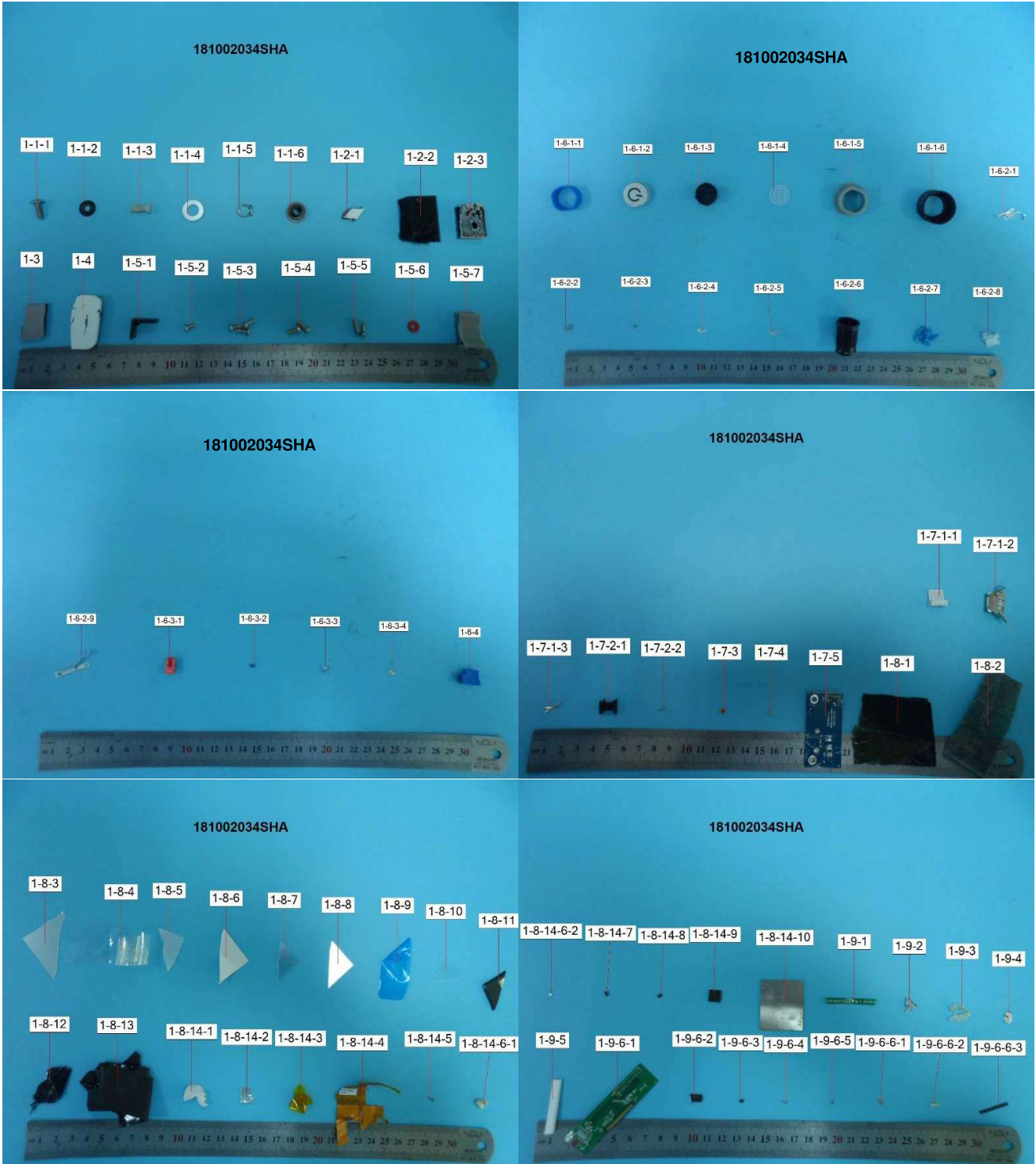
\*\*\*\*\*

To be continued



Tests Conducted

Photo

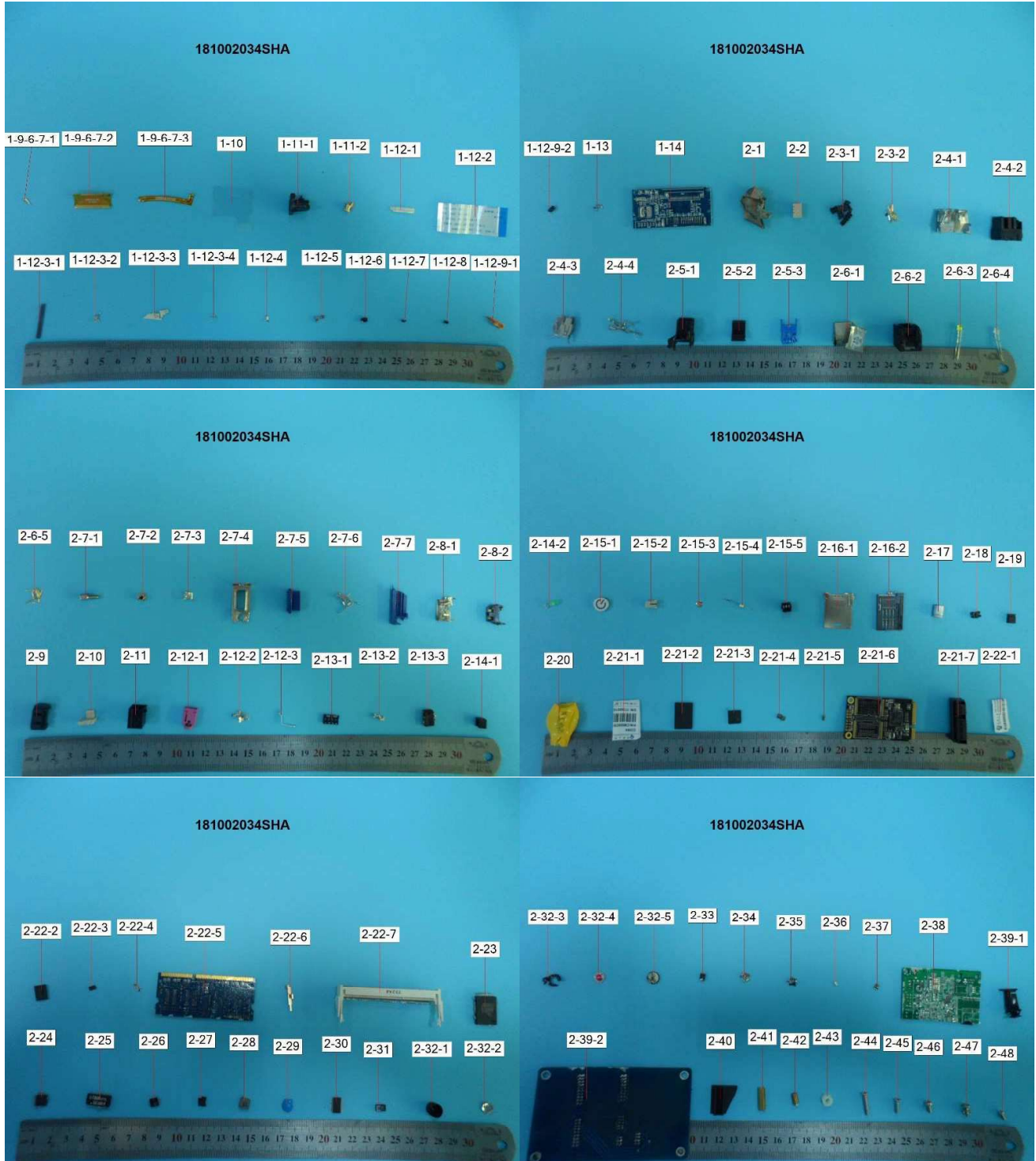


To be continued



Tests Conducted

Photo



To be continued



Tests Conducted

Photo



To be continued





Tests Conducted

Photo



To be continued



Tests Conducted

Photo



To be continued



Tests Conducted

Photo

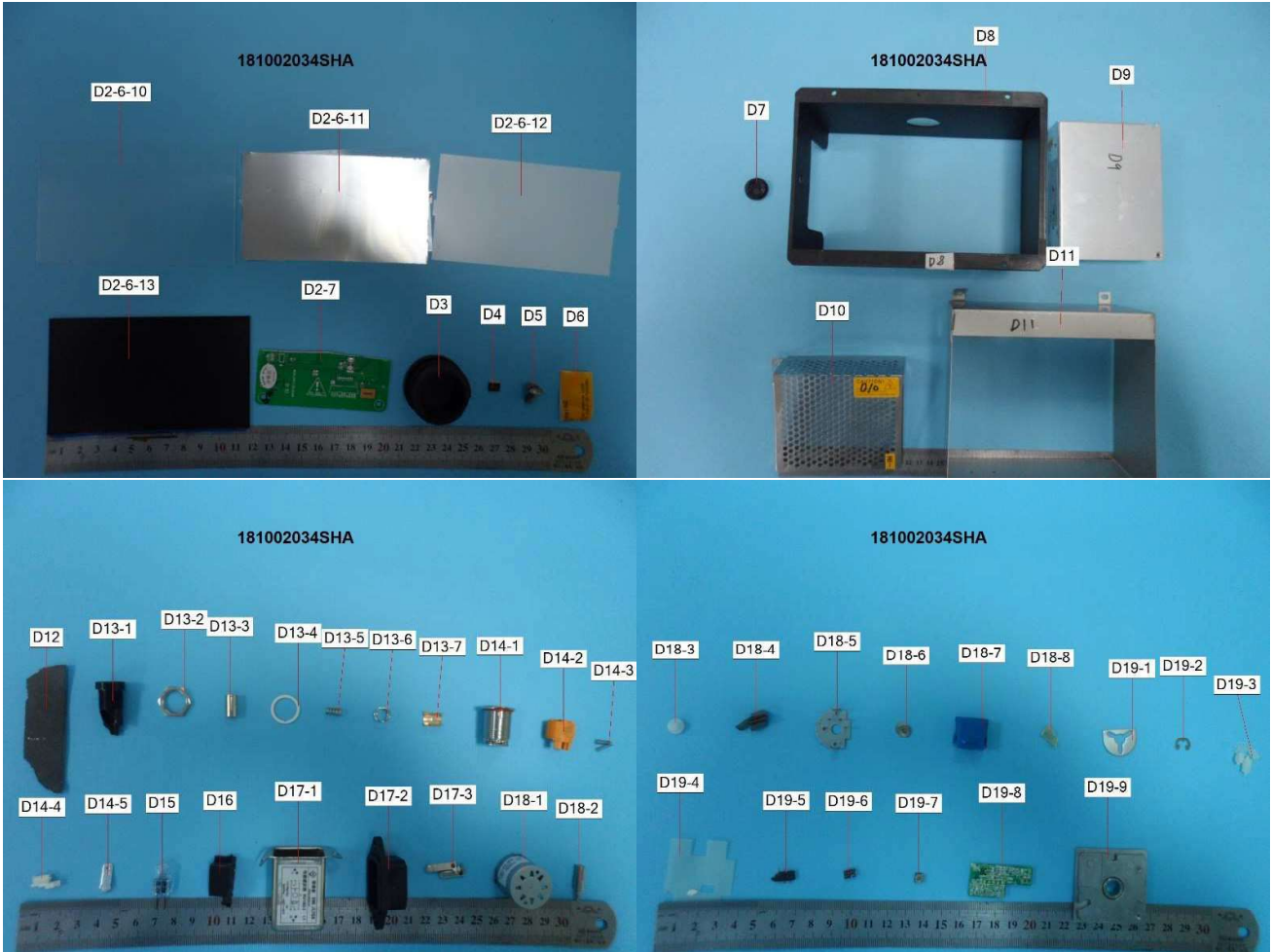


To be continued



Tests Conducted

Photo



To be continued



Tests Conducted

Photo



\*\*\*\*\*  
**End of report**

*This report is made solely on the basis of your instructions and/or information and materials supplied by you. It is not intended to be a recommendation for any particular course of action. Intertek does not accept a duty of care or any other responsibility to any person other than the Client in respect of this report and only accepts liability to the Client insofar as is expressly contained in the terms and conditions governing Intertek's provision of services to you. Intertek makes no warranties or representations either express or implied with respect to this report save as provided for in those terms and conditions. We have aimed to conduct the Review on a diligent and careful basis and we do not accept any liability to you for any loss arising out of or in connection with this report, in contract, tort, by statute or otherwise, except in the event of our gross negligence or wilful misconduct.*

