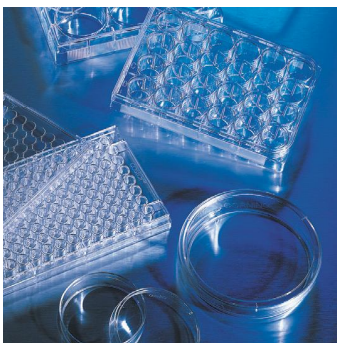


# Corning® Ultra-Low Attachment Surface

Unique hydrogel surface that inhibits cell attachment

CORNING



***Ultra-Low Attachment Surface that you have used on microplates is available on a variety of Corning products!***

The Ultra-Low Attachment surface is a unique covalently bonded hydrogel surface that is hydrophilic and neutrally charged. It minimizes cell attachment, protein absorption and enzyme activation. The surface is noncytotoxic, biologically inert and nondegradable.

***The Ultra-Low Attachment Surface is designed for:***

- ▶ Maintaining cells in a suspended, unattached state
- ▶ Preventing stem cells from attachment-mediated differentiation
- ▶ Preventing anchorage-dependent cells from dividing
- ▶ Reducing binding of attachment and serum proteins to the substrate

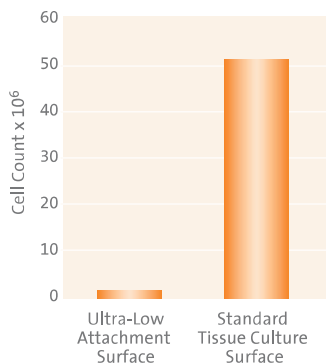


## Corning Surfaces for Cell Culture

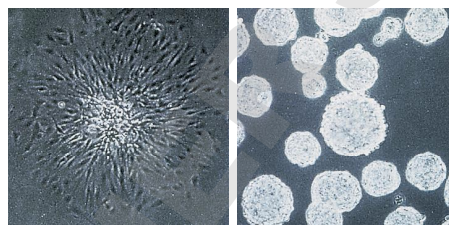
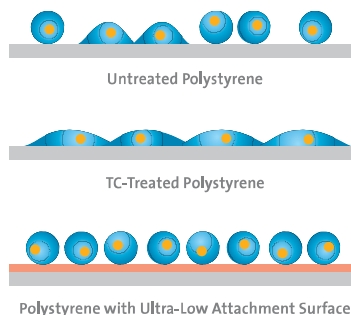
Untreated polystyrene has an **uncharged, hydrophobic** surface to which cell attachment proteins bind poorly. This results in poor and very uneven cell attachment and growth.

Tissue culture (TC) treated polystyrene has a **negatively charged, hydrophilic** surface to which cell attachment proteins bind evenly. This provides a good surface for cell attachment and growth.

The Ultra-Low Attachment Surface has a **neutral, hydrophilic hydrogel** coating which greatly reduces binding of attachment proteins. This minimizes cell attachment and spreading.



Cell attachment on the two surfaces was compared. Cell attachment inhibition on the Ultra-Low Attachment Surface was calculated as a percent reduction using the standard tissue culture treated surface as the reference point. The results indicate a 99.8% reduction in cell attachment of Vero cells on the Ultra-Low Attachment Surface as compared to the standard tissue culture surface.



C6 glioma cell colony on tissue culture treated surface (left) and spheroid colonies on Ultra-Low Attachment Surface (right).

### Corning Ultra Low Attachment Surface Products Ordering Information

Cat. No.	Description	Qty/Pk	Qty/Cs
3261	60 mm style dish, Ultra-Low Attachment Surface	5	20
3262	100 mm style dish, Ultra-Low Attachment Surface	5	20
3471	6 well plate, Ultra-Low Attachment Surface	1	24
3473	24 well plate, Ultra-Low Attachment Surface	1	24
3474	96 well plate, Ultra-Low Attachment Surface, flat bottom	1	24
7007	96 well plate, Ultra-Low Attachment Surface, round bottom	1	24
<b>New</b> 3827	384 well plate, Ultra-Low Attachment Surface, black, clear flat bottom	20	100
3815	25 cm <sup>2</sup> flask, Ultra-Low Attachment Surface, canted neck, vent cap	6	24
3814	75 cm <sup>2</sup> flask, Ultra-Low Attachment Surface, canted neck, vent cap	4	24
3303	CellSTACK® Chamber, 1-STACK, Ultra-Low Attachment Surface	1	8



25 cm<sup>2</sup> Ultra-Low Attachment Surface Canted Neck Flask

For additional Corning product, technical, or distributor information, please e-mail us at [cctech@corning.com](mailto:cctech@corning.com), visit our website [www.corning.com/lifesciences](http://www.corning.com/lifesciences) or call +31 20 659 6051 or contact your local Corning sales office listed below.

#### Corning Incorporated Life Sciences

Corning BV  
Fogostraat 12  
1060 LJ Amsterdam  
The Netherlands  
Phone: +31 0 20 659 60 51  
Fax: +31 20 659 76 73  
[cceurnl@corning.com](mailto:cceurnl@corning.com)  
[www.corning.com/lifesciences](http://www.corning.com/lifesciences)

#### Worldwide Support Offices

**ASIA/PACIFIC**  
Australia/New Zealand  
t 0402-794-347  
**China**  
t 86 21 2215 2888  
f 86 21 6215 2988  
**India**  
t 91 124 4604000  
f 91 124 4604099

**Japan**  
t 81 3-3586 1996  
f 81 3-3586 1291  
**Korea**  
t 82 2-796-9500  
f 82 2-796-9300  
**Singapore**  
t 65 6733-6511  
f 65 6861-2913  
**Taiwan**  
t 886 2-2716-0338  
f 886 2-2516-7500

**EUROPE**  
**France**  
t 0800 916 882  
f 0800 918 636  
**Germany**  
t 0800 101 1153  
f 0800 101 2427  
**The Netherlands**  
t 31 20 655 79 28  
f 31 20 659 76 73  
**United Kingdom**  
t 0800 376 8660  
f 0800 279 1117

**All Other European Countries**  
t 31 (0) 20 659 60 51  
f 31 (0) 20 659 76 73  
**LATIN AMERICA**  
**Brasil**  
t (55-11) 3089-7419  
f (55-11) 3167-0700  
**Mexico**  
t (52-81) 8158-8400  
f (52-81) 8313-8589

The Corning Family of Brands

CORNING **costar** PYREX® **AXYGEN** GOSSELIN™