

# Corning® X-MINI® Selection Kits

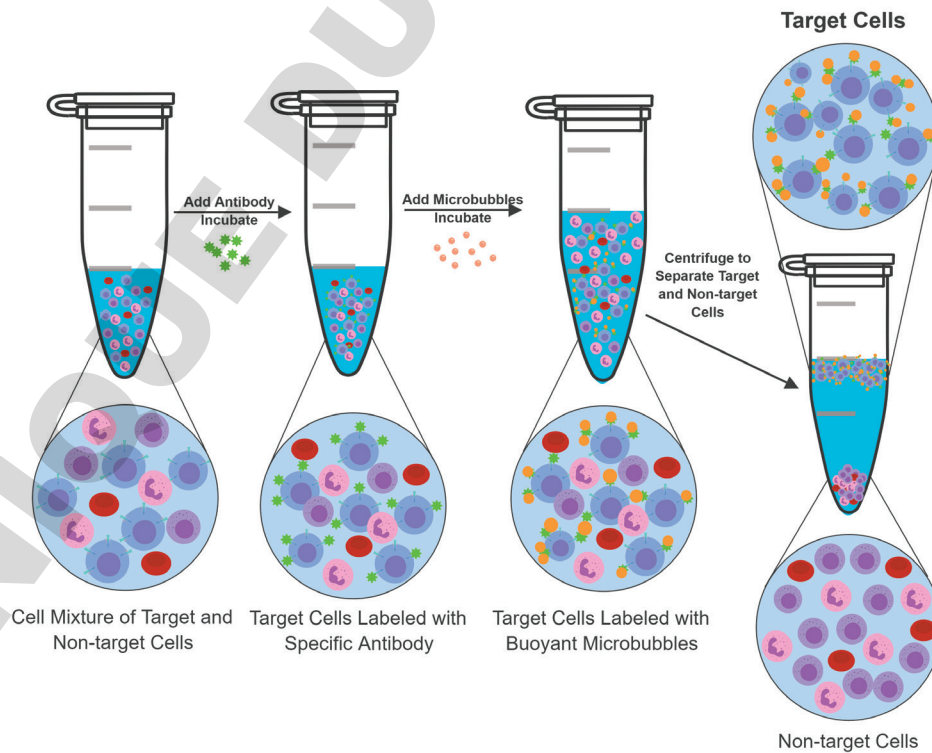
CORNING

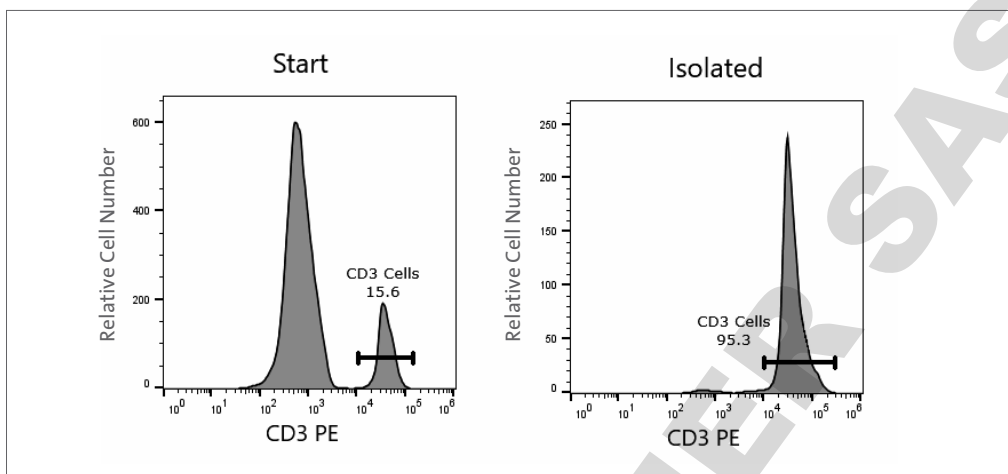
The Corning X-MINI Selection Kits are designed for the selection of cells and cell subsets from blood and blood products using Buoyancy Activated Cell Sorting (Corning X-BACS™) technology.

## Features and Benefits

- ▶ Simplified process: Easy to use
- ▶ Single-use, column-free: Gentle on your cells
- ▶ High purity: Achieve purities of up to 99%
- ▶ Consistency: Reproducible results (>86%)
- ▶ High viability (>97%)
- ▶ Process up to  $4 \times 10^8$  total cells

## How does the Corning X-Mini Selection Kit work?





Example of a separation using biotinylated CD3 antibody and X-BACS Reagent. The cells are fluorescently stained with CD3-PE.

### Ordering Information

Cat. No.	Description	Qty/Cs
6910	Corning X-MINI Human CD8 Selection Kit	1
6911	Corning X-MINI Human CD3 Selection Kit	1

For more specific information on claims, visit the Certificates page at [www.corning.com/lifesciences](http://www.corning.com/lifesciences).

**Warranty/Disclaimer:** Unless otherwise specified, all products are for research use only. Not intended for use in diagnostic or therapeutic procedures. Corning Life Sciences makes no claims regarding the performance of these products for clinical or diagnostic applications.

For additional product or technical information, visit [www.corning.com/lifesciences](http://www.corning.com/lifesciences) or call 800.492.1110. Outside the United States, call +1.978.442.2200 or contact your local Corning sales office.

# CORNING

**Corning Incorporated**  
Life Sciences

836 North St.  
Building 300, Suite 3401  
Tewksbury, MA 01876  
t 800.492.1110  
t 978.442.2200  
f 978.442.2476

[www.corning.com/lifesciences](http://www.corning.com/lifesciences)

**ASIA/PACIFIC**  
Australia/New Zealand  
t 61 427286832

**Chinese Mainland**  
t 86 21 3338 4338  
f 86 21 3338 4300

**India**  
t 91 124 4604000  
f 91 124 4604099

**Japan**  
t 81 3-3586 1996  
f 81 3-3586 1291

**Singapore**  
t 65 6572-9740  
f 65 6735-2913

**Taiwan**  
t 886 2-2716-0338  
f 886 2-2516-7500

**EUROPE**  
CSEurope@corning.com

**France**  
t 0800 916 882  
f 0800 918 636

**Germany**  
t 0800 101 1153  
f 0800 101 2427

**The Netherlands**  
t 020 655 79 28  
f 020 659 76 73

**United Kingdom**  
t 0800 376 8660  
f 0800 279 1117

**All Other European Countries**  
t +31 (0) 206 59 60 51  
f +31 (0) 206 59 76 73

**LATIN AMERICA**  
grupoLA@corning.com

**Brazil**  
t 55 (11) 3089-7400

**Mexico**  
t (52-81) 8158-8400