

Corning® Synthemax® II-SC Substrate

Self-coating synthetic surface for stem cells

CORNING

The Corning Synthemax II-SC Substrate is an easy-to-use, self-coating material for creating a unique synthetic surface that mimics the natural cell environment. This surface supports the adhesion and expansion of stem cells in their undifferentiated state and directed differentiation into specialized cell types. In addition, it offers a synthetic, xeno-free alternative to biological coatings and/or feeder cell layers used in hES and iPSC cell culture.

Corning Synthemax II-SC Substrate allows for the scalable multi-passage expansion of pluripotent stem cells in defined media with:

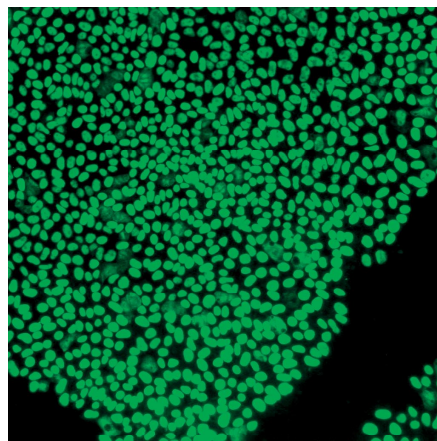
- ▶ Stable doubling time
- ▶ Phenotypic marker expression (Oct4, SSEA4)
- ▶ Retention of pluripotency
- ▶ Retention of normal karyotype

Current methods to maintain hESCs and iPSCs in an undifferentiated state often employ mouse feeder layers or biological substrates. These methods can be problematic as they are difficult to work with, can be inconsistent, and introduce the possibility of contamination from the animal source. The development of this new biomimetic surface directly addresses these issues. Corning Synthemax II-SC Substrate is:

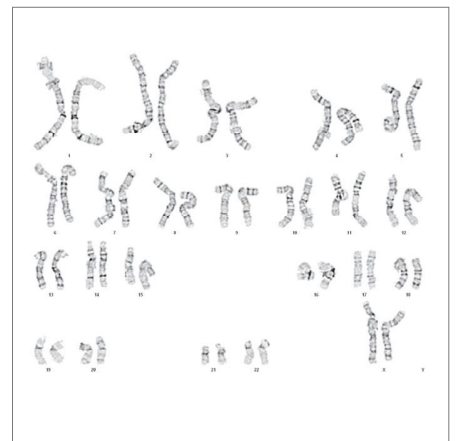
- ▶ Easy-to-use
- ▶ Able to coat plastic and glass surfaces
- ▶ Lot-traceable
- ▶ Irradiated
- ▶ Quality tested for lot-to-lot consistency



10 mg vial of Corning Synthemax II-SC Substrate



Oct4 staining of hiPSC after 5 passages on Corning Synthemax II-SC Substrate in mTeSR1 medium



hiPSC maintained normal karyotype after 7 passages on Corning Synthemax II-SC Substrate in mTeSR medium

Corning® Synthemax® II-SC Substrate Ordering Information

Cat. No.	Description	Size	Qty/Pk
3535XX1	Corning Synthemax II-SC Substrate	10 mg	1 vial

For additional Corning product, technical, or distributor information, please e-mail us at cctech@corning.com, visit our website www.corning.com/lifesciences or contact your local support office listed below.

Corning Incorporated Life Sciences Europe

Fogostraat 12
1060 LJ Amsterdam
The Netherlands
Phone: +31 0 20 659 60 51
Fax: +31 0 20 659 76 73

Corning Incorporated Life Sciences

836 North St.
Building 300, Suite 3401
Tewksbury, MA 01876
t 800.492.1110
t 978.442.2200
f 978.442.2476

www.corning.com/lifesciences

Worldwide Support Offices

ASIA/PACIFIC
Australia/New Zealand
t 0402-794-347

China
t 86 21 2215 2888
f 86 21 6215 2988

India
t 91 124 4604000
f 91 124 4604099

Japan
t 81 3-3586 1996
f 81 3-3586 1291

Korea
t 82 2-796-9500
f 82 2-796-9300

Singapore
t 65 6733-6511
f 65 6861-2913

Taiwan
t 886 2-2716-0338
f 886 2-2516-7500

EUROPE

France
t 0800 916 882
f 0800 918 636

Germany
t 0800 101 1153
f 0800 101 2427

The Netherlands
t 31 20 655 79 28
f 31 20 659 76 73

United Kingdom
t 0800 376 8660
f 0800 279 1117

All Other European Countries

t 31 (0) 20 659 60 51
f 31 (0) 20 659 76 73

LATIN AMERICA Brasil

t (55-11) 3089-7419
f (55-11) 3167-0700

Mexico
t (52-81) 8158-8400
f (52-81) 8313-8589

CORNING | **FALCON®** **AXYGEN®** **PYREX®** **GOSELIN™**