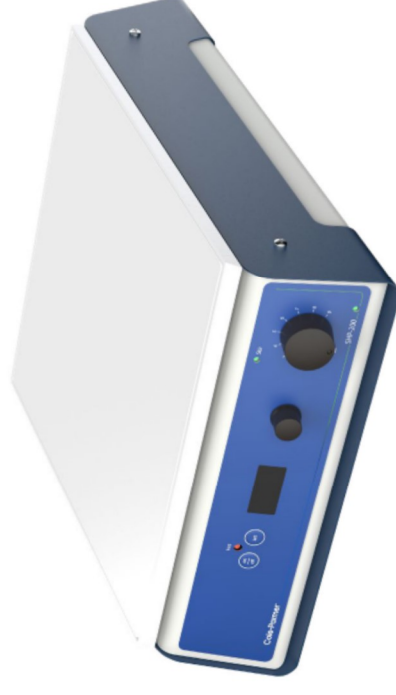
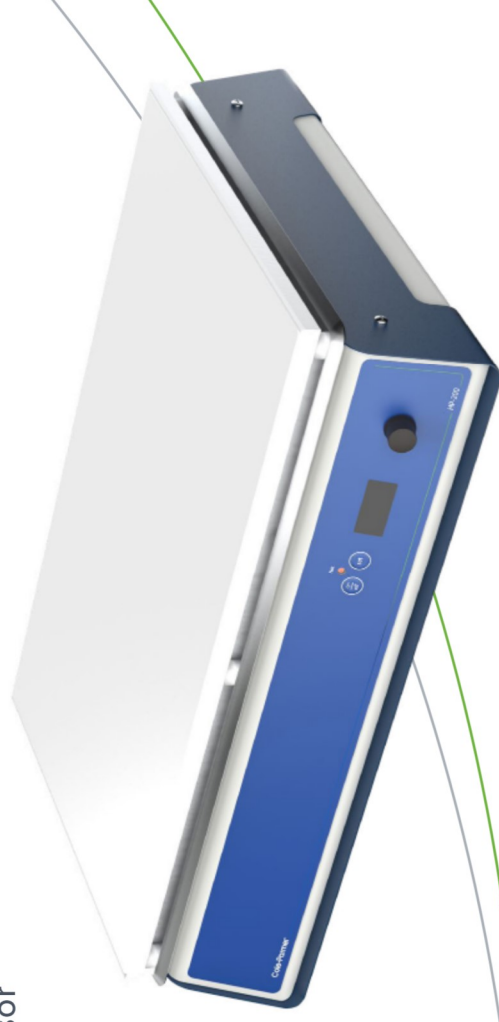


## Cole-Parmer® Large Capacity Hot Plates and Stirrers

- 30 x 30cm (12" x 12"), and 30 x 50cm (12" x 20")
- Digital and Infrared
- Choice of plate material
- All units incorporate the latest technology, microprocessor controlled, dual thermocouples to ensure accurate temperature control and over temperature protection
- Biocote® anti-microbial protection
- LED temperature indicator
- Hot warning light, remains active even when unplugged
- Now includes a 120V variant across the range



Hotplate Stirrer SHP-200D-LC

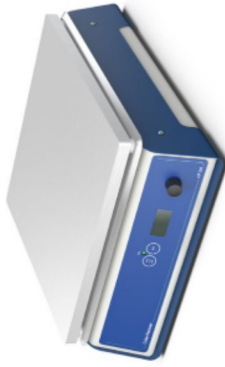


Hotplate Stirrer HP-200D-XL-C

# Cole-Parmer® Large Capacity Hot Plates HP-200 Series - Digital

## Features:

- Digital setting and control of plate temperature
- Accurate temperature control by microprocessor
- Choice of top plate material
  - glass ceramic – provides excellent chemical resistance, high plate temperatures, easy to clean
  - aluminum/silicon alloy – rapid heating and even temperature distribution across whole plate
- Large square plate area ideal for heating one large vessel or several smaller ones
  - 30 x 50cm can accommodate up to 30 x 100mL beakers
- Hot warning light, remains active even when unplugged while above 50°C
  - 30 x 30cm (12" x 12")
    - 04807-66-67 – ceramic, max temp 450°C
    - 04804-80-81 – aluminum, max temp 300°C
  - 30 x 50cm (12" x 20")
    - 04807-70 – ceramic, max temp 450°C
    - 04807-82-83 – aluminum, max temp 300°C



HP-200D-L-S  
230V: 04807-80  
120V: 04807-81



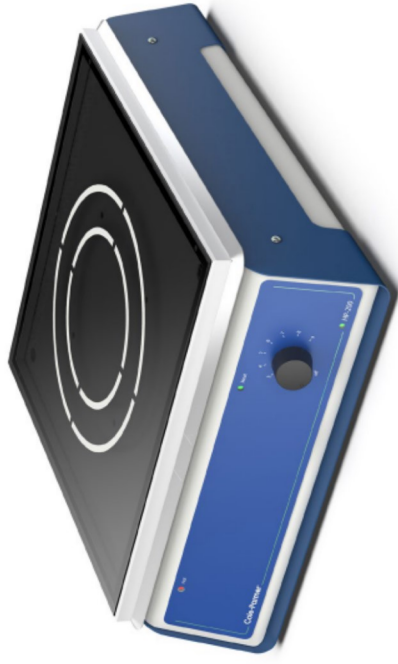
HP-200D-XL-S  
230V: 04807-82  
120V: 04807-83



HP-200D-L-C  
230V: 04807-66  
120V: 04807-67



HP-200D-XL-C  
230V: 04807-70

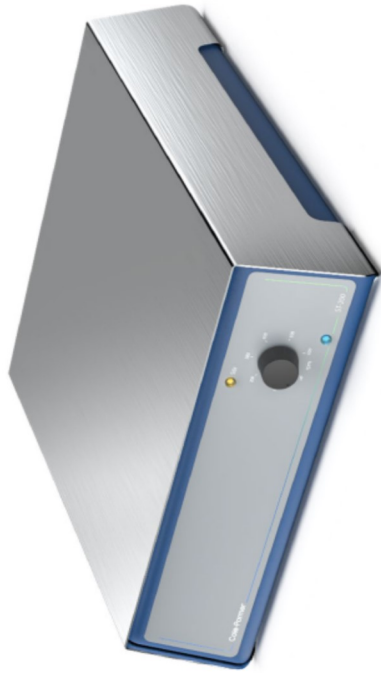


HP-200-IR-L  
230V: 04807-84  
120V: 04807-85

## Cole-Parmer® Large Capacity Hot Plates HP-200 Series - Infrared

### Features:

- Easy to use temperature control dial
- Infrared heater is efficient and saves time and energy
  - even plate temperatures and uniform heating conditions
- Ideal for heating large volumes of liquid
- Chemically resistant ceramic top
  - Max temp 450C
- Hot warning light, remains active even when unplugged while above 50°C
- 30 x 30cm (12" x 12")



ST-200-L-S  
230V: 04807-74  
120V: 04807-75

## Cole-Parmer® Large Capacity Stirrers ST-200 Series

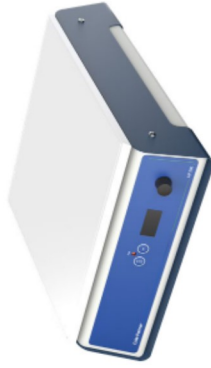
### Features:

- Easy to use temperature control dial
- Powerful magnetic drive with electronic feed-back speed control accurately maintains the set speed
- Powerful magnets for strong magnetic coupling
- Speed range - 100-600 rpm
- Easily stirs up to 30 liters
- Robust, durable construction with stainless steel top
- 30 x 30cm (12" x 12")

# Cole-Parmer® Large Capacity Stirrer/ Hot Plates SHP-200 - Digital

## Features:

- Easy to use temperature and stirring control dials
- Choice of top plate material
  - glass ceramic – provides excellent chemical resistance, high plate temperatures, easy to clean
  - aluminum/silicon alloy – rapid heating and even temperature distribution across whole plate
- Large square plate area ideal for handling large vessel
- Powerful stirring action – volumes up to 15 Liters
- Independent safety circuit to protect against overheating
- Hot warning light, remains active even when unplugged while above 50°C
- 30 x 30cm (12" x 12")
  - 04807-76-77 – ceramic, max temp 450°C, stirring 100 – 1500 rpm
  - 04807-78-79 – aluminum, max temp 300°C, stirring 100 – 1500 rpm



SHP-200D-L-C  
230V: 04807-76  
120V: 04807-77

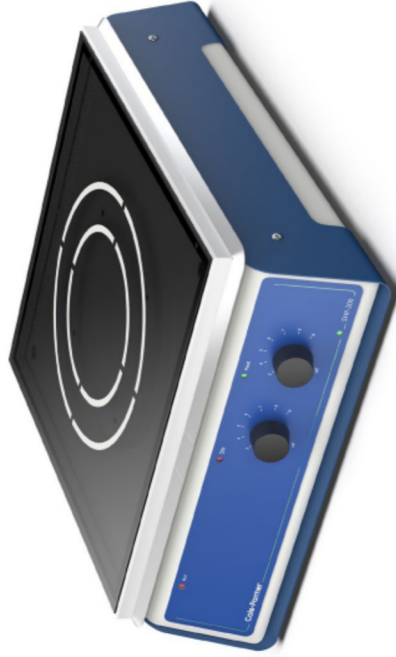


SHP-200D-L-S  
230V: 04807-78  
120V: 04807-79

# Cole-Parmer® Large Capacity Stirrer/ Hot Plates SHP-200 Series - Infrared

## Features:

- Easy to use temperature control dial
- Powerful magnetic drive with electronic feed-back speed control accurately maintains the set speed
- Powerful magnets for strong magnetic coupling - stirring 100 - 1500 rpm
- Easily stirs up to 30 liters
- Chemically resistant ceramic top - max temp 450°C
- 30 x 30cm (12" x 12")



SHP-200-IR-L  
230V: 04807-86  
120V: 04807-87



## Technical Specification

Specification	HP-200D-L-C	HP-200D-L-S	HP-200D-XL-C	HP-200D-XL-S	ST-200-L-S	SHP-200D-L-C	SHP-200D-L-S	HP-200-IR-L	SHP-200-IR-L
Plate material	Glass ceramic	Al/Si alloy	Glass ceramic	Al/Si alloy	Stainless steel	Glass ceramic	Al / Si alloy	-	-
Plate dimensions, mm	300 x 300	300 x 300	300 x 500	300 x 500	300 x 300	300 x 300	300 x 300	300 x 300	300 x 300
Heated area, mm	200 x 200	300 x 300	250 x 450	300 x 500	-	200 x 200	300 x 300	140 diameter	140 diameter
Heater power, W	1200	600	2250	1500	-	1200	600	900	900
Max. plate temp. °C	450	300	375	300	-	450	300	-	-
Speed range, rpm	-	-	-	-	100 x 600	100 to 1500	100 to 1500	-	100 to 1500
Max.stirring capacity, litres	-	-	-	-	30	15	15	-	-
Dimensions, mm (w x d x h)	320 x 370 x 120	320 x 370 x 120	560 x 360 x 130	520 x 360 x 130	328 x 369 x 103	300 x 365 x 105	300 x 365 x 105	300 x 365 x 105	300 x 365 x 105
Net weight, kg	6	6	12	12	5	7	7	4	4
Electricity supply	120V, 60Hz 230V 50/60Hz	120V, 60Hz 230V 50/60Hz	230V, 50Hz	120V, 60Hz 230V 50/60Hz	120V, 60Hz 230V 50/60Hz	120V, 60Hz 230V 50/60Hz	120V, 60Hz 230V 50/60Hz	120V, 60Hz 230V 50/60Hz	120V, 60Hz 230V 50/60Hz
IP Rating	31	31	-	-	-	-	-	-	-

## Ordering Information

Description	Ordering Number	Series No.	Model No.	Legacy Sku.
Ceramic, Digital, 30x30cm Hotplate, 230V	04807-66	HP-200	HP-200D-L-C	CB300
Ceramic, Digital, 30x30cm Hotplate, 120V	04807-67	HP-200	HP-200D-L-C-120	CB300/120V/60
Ceramic, Digital, 30x50cm Hotplate, 230V	04807-70	HP-200	HP-200D-XL-C	CB500
Metal, Analog, 30x30cm Stirrer, 230V	04807-74	ST-200	ST-200-L-S	SB301
Metal, Analog, 30x30cm Stirrer, 120V	04807-75	ST-200	ST-200-L-S-120	SB301/120V/60
Ceramic, Digital, 30x30cm Hotplate/Stirrer, 230V	04807-76	SHP-200	SHP-200D-L-C	CB302
Ceramic, Digital, 30x30cm Hotplate/Stirrer, 120V	04807-77	SHP-200	SHP-200D-L-C-120	CB302/120V/60
Metal, Digital, 30x30cm Hotplate/Stirrer, 230V	04807-78	SHP-200	SHP-200D-L-S	SB302
Metal, Digital, 30x30cm Hotplate/Stirrer, 120V	04807-79	SHP-200	SHP-200D-L-S-120	SB302/120V/60
Metal, Digital, 30x30cm Hotplate, 230V	04807-80	HP-200D	HP-200D-L-S	SD300

## Ordering Information - continued

Description	Ordering Number	Series No.	Model No.	Legacy Sku.
Metal, Digital, 30x30cm Hotplate, 120V	04807-81	HP-200D	HP-200D-L-S-120	SD300/120V/60
Metal, Digital, 30x50cm Hotplate, 230V	04807-82	HP-200D	HP-200D-XL-S	SD500
Metal, Digital, 30x50cm Hotplate, 120V	04807-83	HP-200D	HP-200D-XL-S-120	SD500/120V/6
Infrared Hotplate, 30x30cm, 230V	04807-84	HP-200	HP-200-IR-L	CR300
Infrared Hotplate, 30x30cm, 120V	04807-85	HP-200	HP-200-IR-L-120	CR300/120V/60
Infrared Hotplate/Stirrer, 30x30cm, 230V	04807-86	SHP-200	SHP-200-IR-L	CR302
Infrared Hotplate/Stirrer, 30x30cm, 120V	04807-87	SHP-200	SHP-200-IR-L-120	CR302/120V/60

[coleparmer.com](http://coleparmer.com)

USA: +1.800.323.4340  
 Canada: +1.800.363.5900  
 China: +86.21.5109.9909  
 France: +33 (0) 1486 37800  
 Germany: +49 (0) 9377 92030

India: +1.800.266.1244  
 Italy: +39 (0) 1313 89513  
 UK: +44 (0) 1480 272279  
 All other countries: +1.847.549.7600

**Cole-Parmer®**  
 essentials  
 an antylia scientific company  
 Find out more at [antylia.com](http://antylia.com)