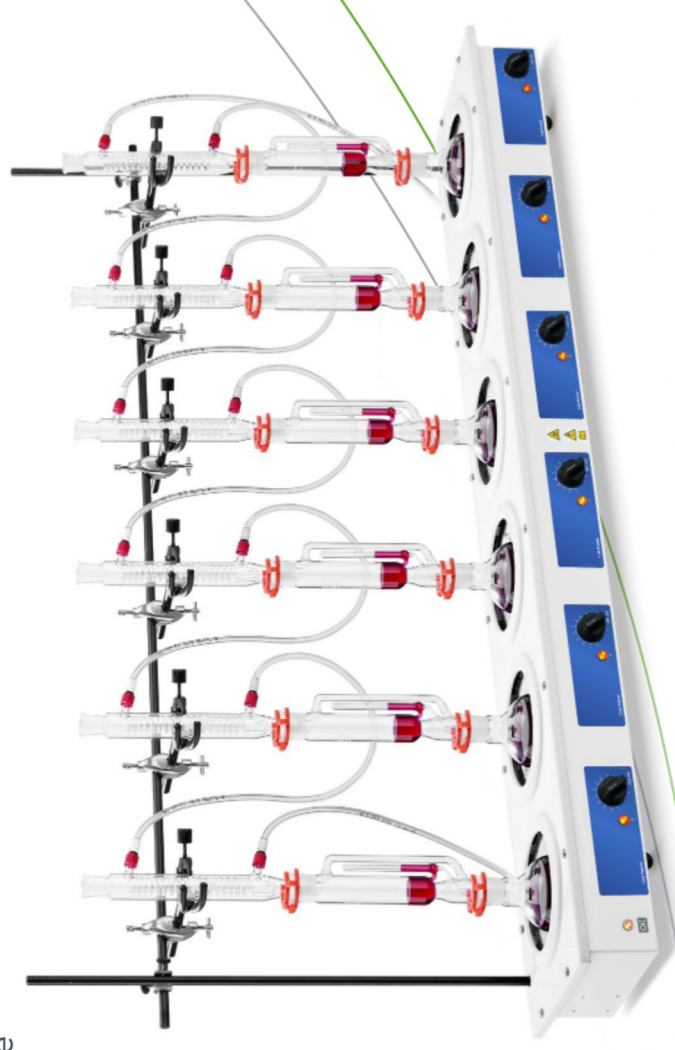


## Cole-Parmer® HM-200 and SHM-200 6 Position Multi-Mantles

- Individual built-in solid state electronic controls enable easy regulation of heater, while removing sparking associated with mechanical switching
- Three 12.7mm diameter support rods are included
- Round bottom flask capacity from 100mL to 1000mL at all 6 positions
- Top cover is polypropylene and external surfaces are powder coated giving good general chemical resistance
- Coiled heating element is suspended within a thermal insulating cartridge to provide maximum heat transfer and support
- Neon lights indicate when power is on and supplied to heaters and, if applicable, supplied to stirrers



## Ordering Information

Description	Ordering Number	Series No.	Model No.	Legacy Sku.
6 x 100mL, 230v 50/ 60Hz, 420W UK and EU plug	03076-25	HM-200	HM-200-MP6-100	EME60100/CEB
6 x 100mL, 115v 50/ 60Hz, 420W	03076-24	HM-200	HM-200-MP6-100-115	EME60100/CEBX1CEBX1
6 x 250mL, 230v 50/ 60Hz, 900W UK and EU plug	03076-28	HM-200	HM-200-MP6-250	EME60250/CEB
6 x 250mL, 115v 50/ 60Hz, 900W	03076-27	HM-200	HM-200-MP6-250-115	EME60250/CEBX1CEBX1
6 x 500mL, 230v 50/ 60Hz, 1200W UK and EU plug	03076-31	HM-200	HM-200-MP6-500	EME60500/CEB
6 x 500mL, 115v 50/ 60Hz, 1200W	03076-30	HM-200	HM-200-MP6-500-115	EME60500/CEBX1CEBX1
6 x 1000mL, 230v 50/ 60Hz, 1800W UK and EU	03076-34	HM-200	HM-200-MP6-1000	EME61000/CEB
6 x 1000mL, 115v 50/ 60Hz, 1800W	03076-33	HM-200	HM-200-MP6-1000-115	EME61000/CEBX1

6 x 100mL, 230v 50/ 60Hz, 500W UK and EU plug	03076-37	SHM-200	SHM-200-MP6-100	EMEA60100/CE
6 x 100mL, 115v 50/ 60Hz, 500W	03076-36	SHM-200	SHM-200-MP6-100-115	EMEA60100/CEX1
6 x 250mL, 230v 50/ 60Hz, 980W UK and EU plug	03076-40	SHM-200	SHM-200-MP6-250	EMEA60250/CE
6 x 250mL, 115v 50/ 60Hz, 980W	03076-39	SHM-200	SHM-200-MP6-250-115	EMEA60250/CEX1
6 x 500mL, 230v 50/ 60Hz, 1280W UK and EU plug	03076-43	SHM-200	SHM-200-MP6-500	EMEA60500/CE
6 x 500mL, 115v 50/ 60Hz, 1280W	03076-42	SHM-200	SHM-200-MP6-500-115	EMEA60500/CEX1
6 x 1000mL, 230v 50/ 60Hz, 1880W UK and EU plug	03076-46	SHM-200	SHM-200-MP6-1000	EMEA61000/CE
6 x 1000mL, 115v 50/ 60Hz, 1880W	03076-45	SHM-200	SHM-200-MP6-1000-115	EMEA61000/CEX1

## Technical Specification

Specification	HM-200-MP6-100	HM-200-MP6-100-115	HM-200-MP6-250	HM-200-MP6-250-115	HM-200-MP6-500	HM-200-MP6-500-115	HM-200-MP6-1000	HM-200-MP6-1000-115
Flask Capacity	6 x 100mL	6 x 100mL	6 x 100mL	6 x 100mL	6 x 100mL	6 x 100mL	6 x 100mL	6 x 100mL
Dimensions (d x w x h), mm	270 x 1210 x 110mm	270 x 1210 x 110mm	270 x 1210 x 110mm	270 x 1210 x 110mm	285 x 1450 x 130mm	285 x 1450 x 130mm	285 x 1450 x 130mm	285 x 1450 x 130mm
No. of Recesses	6	6	6	6	6	6	6	6
Shipping weight, kg	10.1kg	10.1kg	10.1kg	10.1kg	12.5kg	12.5kg	12.5kg	12.5kg

Specification	SHM-200-MP6-100	SHM-200-MP6-100-115	SHM-200-MP6-250	SHM-200-MP6-250-115	SHM-200-MP6-500	SHM-200-MP6-500-115	SHM-200-MP6-1000	SHM-200-MP6-1000-115
Flask Capacity	6 x 100mL	6 x 100mL	6 x 100mL	6 x 100mL	6 x 100mL	6 x 100mL	6 x 100mL	6 x 100mL
Dimensions (d x w x h), mm	270 x 1210 x 110mm	270 x 1210 x 110mm	270 x 1210 x 110mm	270 x 1210 x 110mm	285 x 1450 x 130mm	285 x 1450 x 130mm	285 x 1450 x 130mm	285 x 1450 x 130mm
No. of Recesses	6	6	6	6	6	6	6	6
Shipping weight, kg	10.1kg	10.1kg	10.1kg	10.1kg	12.5kg	12.5kg	12.5kg	12.5kg

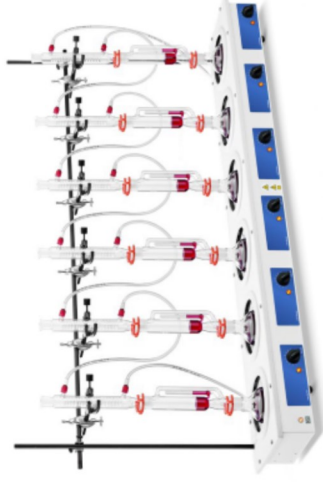
# Cole-Parmer® HM-200 & SHM-200 6 Position Multi-Mantles

The Cole-Parmer® Multi (Extraction) Mantle with six recesses has a built-in electronic controller and offers a choice of heater only or heater/stirrer combination models.

The vented case's unique air flow ensures the outer case remains safe to touch.

### Additional Features for SHM-200 series models

- Allow the solution to be stirred and heated simultaneously
- Provide stirring speeds of between 50 to 1000rpm
- One stirring control operates each set of six recesses



[coleparmer.com](http://coleparmer.com)

USA:  
+1.800.323.4340  
+1.847.549.7600

Canada: +1.800.363.5900  
China: +86.21.5109.9909  
France: +33 (0) 1486 37800  
Germany: +49 (0) 9377 92030

India: +1.800.266.1244  
Italy: +39 (0) 1313 89513  
UK: +44 (0) 1480 272279  
All other countries: +1.847.549.7600

**Cole-Parmer®**  
essentials  
an antylia scientific company

AZ-EMEA-LT-00258 0122

Find out more at [antylia.com](http://antylia.com)