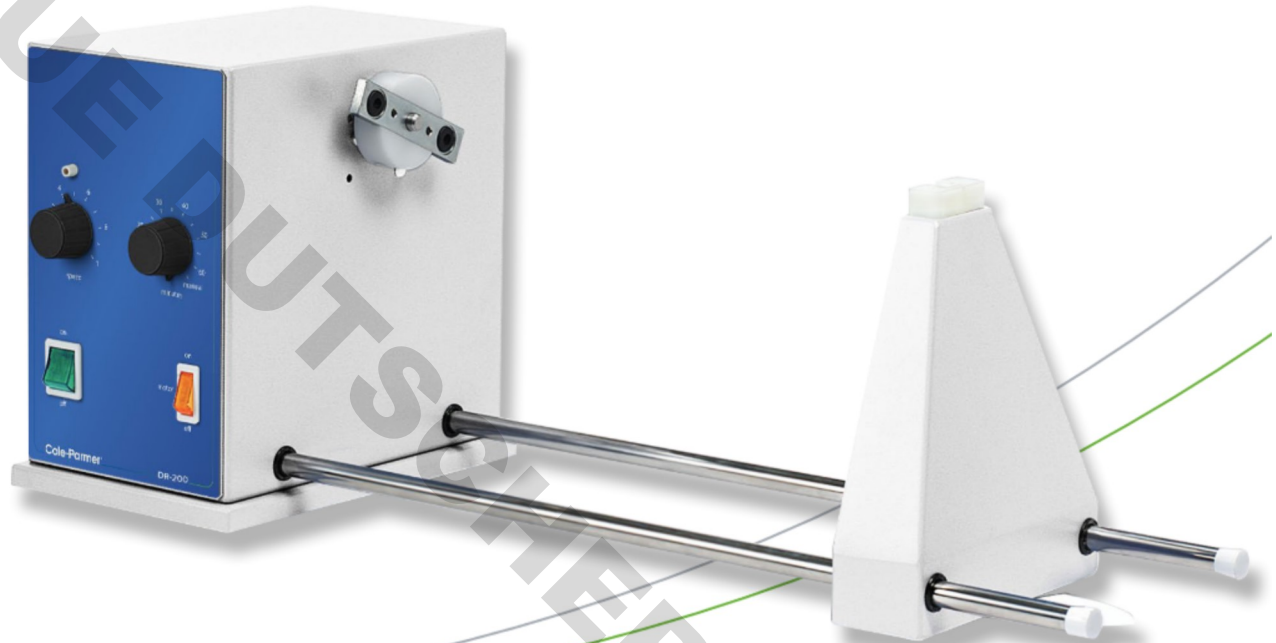


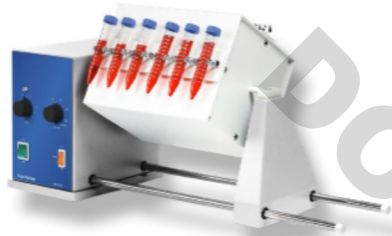
Cole-Parmer®

Cole-Parmer® Rotator drive units DR-200

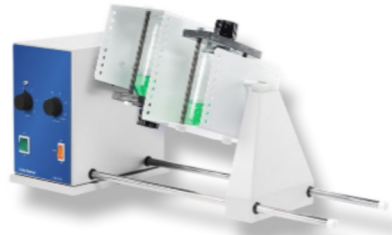
- Highly versatile - accepts a choice of 5 drums
- Built in timer
- Variable speed control 6 to 60rpm



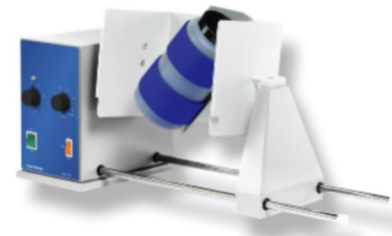
Cole-Parmer® Rotator drive units, DR-200



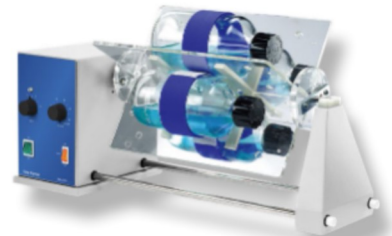
51600-92



51600-96



51600-97



51600-98



51600-99

The rotator drive unit is used in conjunction with a wide range of drums designed to take different sizes and types of vessels. The five drums are designed to give different mixing actions.

Speed of rotation is variable from 6 to 60rpm for a range of mixing applications. For added convenience a built in analogue timer can be set from 10 to 60 minutes. Alternatively the unit can be set for continuous operation.

Test-tube holder, designed to rotate test-tubes in an end-over-end movement. Comprises a square metal drum which can accommodate a choice of plates fitted with tube clips. Up to four plates can be mounted on the drum. Easy fitting via a push button mechanism.

Two platforms, this drum accepts 2 x 250ml conical flasks or reagent bottles for end over end mixing. The samples are securely held in place by a collar that fits around the neck of the flask or bottle and is secured by two washers.

Drum holds the vessel at a 45° angle so it is rolled and turned end over end at the same time giving a vigorous figure of 8 mixing action. The sample container is retained by a strong Velcro strap. Accepts almost any container including reagent bottles, powder jars and paint tins up to 200mm in length and 120mm diameter.

This drum consists of a four segment Perspex® cradle. Each segment is fitted with a fully adjustable Velcro® strap to hold bottles and other containers up to 120mm diameter and up to 300mm in length.

Designed to rotate test-tubes in an end-over-end movement. Comprises a square metal drum which can accommodate a choice of plates fitted with tube clips. Up to four plates can be mounted on the drum. Easy fitting via a push button mechanism.

DOMINIQUE DUTSCHER SAS

Ordering Information

| Description | Ordering Number | Series No. | Model No. | Legacy Sku. |
|----------------------------|-----------------|------------|------------|--------------|
| Rotator drive, 230V, 50Hz | 51600-06 | DR-200 | DR-200 | STR4 |
| Rotator drive, 120V, 60 Hz | 51600-02 | DR-200 | DR-200-120 | STR4/120V/60 |

Accessories

| Description | Ordering Number | Series No. | Model No. | Legacy Sku. |
|---|-----------------|------------|-----------|-------------|
| Drum to hold test tube clip plates | 51600-95 | DR-200 | N/A | STR4/1 |
| Clip plates for 12 x 12mm tubes (per pair) | 51600-91 | DR-200 | N/A | STR1/1 |
| 2 Clip plates for 10 x 16mm tubes (per pair) | 51600-92 | DR-200 | N/A | STR1/2 |
| Clip plates for 8 x 19mm tubes (per pair) | 51600-93 | DR-200 | N/A | STR1/3 |
| Clip plates for 7 x 24mm tubes (per pair) | 51600-94 | DR-200 | N/A | STR1/4 |
| Drum with two platforms to hold flasks or bottles | 51600-96 | DR-200 | N/A | STR4/2 |
| Drum with figure 8 mixing action | 51600-97 | DR-200 | N/A | STR4/3 |
| Drum with four segment cradles holding up to four bottles | 51600-98 | DR-200 | N/A | STR4/4 |
| Drum with four segment cradles and four tube racks | 51600-99 | DR-200 | N/A | STR4/5 |



Technical Specification

| Specification | DR-200 |
|----------------------------|-------------------------------|
| Maximum load, kg | 3 |
| Rotation speed | 6 to 60rpm |
| Dimensions, mm (w x d x h) | 650 x 250 x 250 |
| Net weight, kg | 6.4 |
| Electrical Supply | 230V, 50Hz, 50W 120V, 60Hz |
| IP Rating | 31 |

coleparmer.com

USA:
+1.800.323.4340
+1.847.549.7600

Canada: +1.800.363.5900
China: +86.21.5109.9909
France: +33 (0) 1486 37800
Germany: +49 (0) 9377 92030

India: +1.800.266.1244
Italy: +39 (0) 1313 89513
UK: +44 (0) 1480 272279
All other countries: +1.847.549.7600

Cole-Parmer®
essentials

an antylia scientific company

Find out more at antylia.com