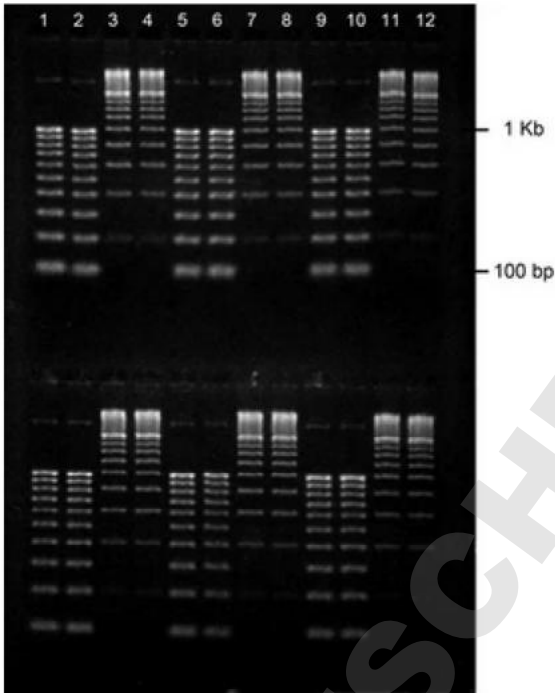


GE-3710 | 1% AGAROSE TAE W/ ETBR PORTRAIT GEL, 2(12) WELL



- Percentage: 01%
- Buffer Type: 1X TAE
- Gel Type: Agarose
- Staining Dye: EtBr
- Gel Dimensions: Portrait, 6.5(w) x 9.5(l)cm
- Gel Thickness: 6.0mm
- Well Format: 2(12)
- Well Thickness: 1.0mm
- Load Volume: 11µl
- MultiChannel Compatible: No
- Gels per Box: 10 gels/Box
- Equipment Compatibility: RunOne or similar size units/systems
- Shelf life: 7 months at room temperature