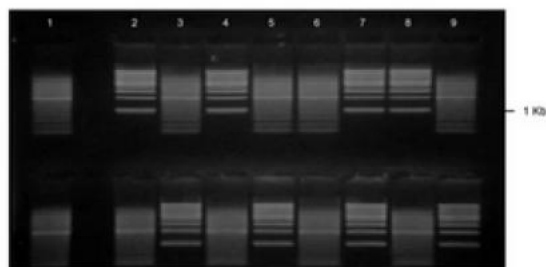


## GE-3520 | 1% AGAROSE TAE W/ ETBR LANDSCAPE GEL, 2(8+1) WELL



### PreCast Gels

Percentage: 1%

Buffer Type: 1X TAE

Gel Type: Agarose

Staining Dye: EtBr

Gel Dimensions: Landscape, 11.7(w) x 5.6(l)cm

Gel Thickness: 6.0mm

Well Format: 2(8+1)

Well Thickness: 1.0mm

Load Volume: 11µl

MultiChannel Compatible: Yes, 8 Channel Compatible

Gels per Box: 5 gels/Box

Equipment Compatibility: RunOne or similar size units/systems