



Part number: 19-070

# Omni Bead Ruptor 24

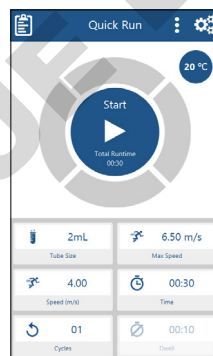
## Bead Mill Homogenizer

The Omni Bead Ruptor 24™ bead mill homogenizer is designed with a unique carriage motion to ensure that the intra-tube bead movement reduces swirling and results in the highest bead impact forces of any bead mill on the market. The increased power of the Omni Bead Ruptor 24 bead mill decreases processing time and reduces sample heating to maximize sample preparation efficiency.

- Optimized tube motion ensures the highest performance
- Convenient front loading design
- Programmable memory settings
- Multilingual user interface
- Fixed 2 mL tube carriage - process 24 x 2 mL tubes

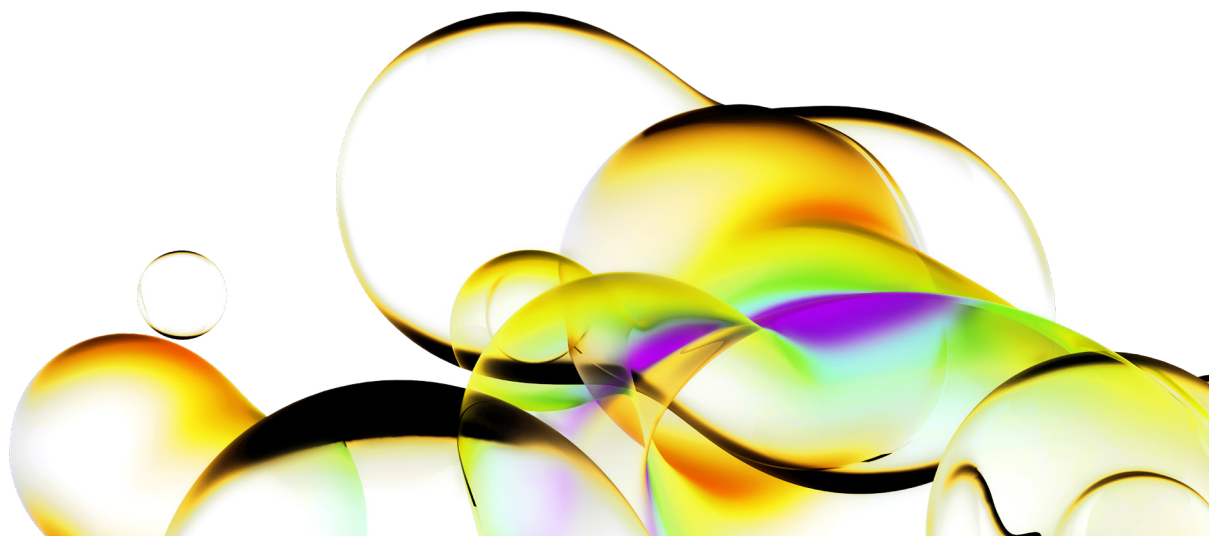
**Ideal for:**

- DNA/RNA extraction
- Tissue homogenization
- Enzyme isolation
- Protein purification



### Features

- Touch Screen Interface
- Customize and save programs
- Optimized tube motion with speeds up to 6.5 m/s
- Process up to 24 samples per cycle
- Convenient front loading design
- Locking safety lid
- Process samples from 25 µL to 2 mL



Specifications	
Power rating	115-230V, 50/60 Hz
Performance range	0.8 - 6.5 m/s in increments of 0.15 m/s
Interface	Programmable touchscreen
Run time	1 second to 9:59 minutes
Processing volume	25 $\mu$ L to 2 mL
Dimensions	W: 15" (38.1 cm), D: 17" (43.2 cm), H: 13" (33.0 cm)
Weight	65 lbs. (29 kg)
Warranty	One year
Certification	CE, UKCA



### A selection of our best-selling nuclease-free bead kits

A variety of bead media are available for different sample types. With the Omni Bead Ruptor bead mill's vigorous and uniform shaking, all samples are consistently homogenized.

2 mL pre-filled bead mill tubes	Order number
Hard Tissue Grinding Mix 2.4 mm Metal	19-620
Micro-Organism Lysing Mix 0.1 mm Glass	19-621
Soft Tissue Homogenizing Mix 1.4 mm Ceramic	19-627
Hard Tissue Homogenizing Mix 2.8 mm Ceramic	19-628



[Contact us](#) to streamline your sample prep process.

revvity