

Natch **24/48/96** Nucleic Acid Extraction System

Make molecular diagnosis more touchable

-  **Faster**
-  **Easier**
-  **Friendlier**

EXTREMELY SIMPLE WORKFLOW

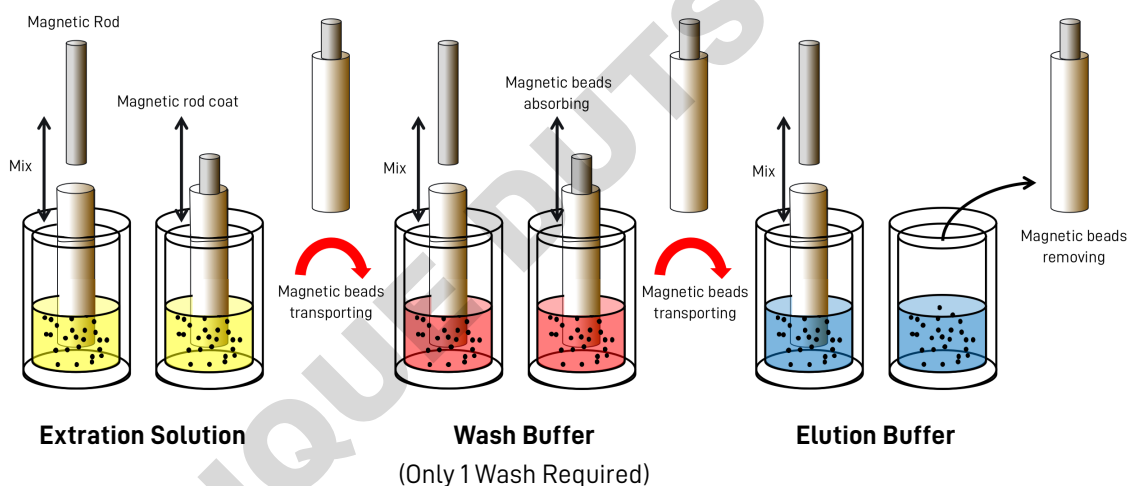
1. Upload sample and reagent

2. Select program

3. Detect and analyze



WORKING PRINCIPLE



FEATURES



FASTER

Extraction time:
16 min (SARS-CoV-2)



FRIENDLIER

Innovative interface,
user-friendly operation



EASIER

Reagents Pre-package
for direct use

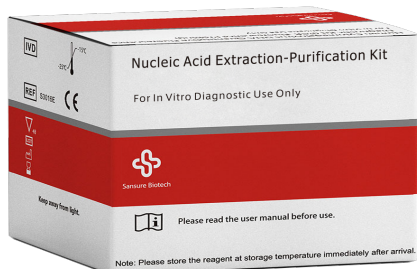


TECHNICAL DATASHEET

Parameter Name	Technical Parameters		
	Natch 24	Natch 48	Natch 96
Extraction Technology	Advanced Magnetic Beads Technology		
Sample Throughput	1- 24	1- 48	1- 96
Working Volume	100-10000 μ L	30-2000 μ L	30-1000 μ L
Consumables	24 Deep-well Plate	48 Deep-well Plate	96 Deep-well Plate
Magnetic Rod Quantity	24	48	96
Heating Temperature	From Room Temperature to 125°C		
Temperature Accuracy	2%		
Oscillating for Mixing	Tip Comb Moves Up and Down to Mix, 11 Different Mixing Modes Including a Speed-shift Method		
Recovery Rate of Magnetic Beads	>95%		
Extraction Time	10-60 min/batch (Experiment Depended)		
Anti-contamination	Internal UV Lamp, Air Filtration System		
Operation Interface	7-inch Color Touchscreen		
Operation Mode	Touch Control		
Internal Program	Up to 120 Groups of Programs Can be Stored		
Power Supply	AC 200-240 V/100-120 V, 50 Hz/60 Hz		
size and Weight	655x655x520 mm (L x W x H), Weight: 65kg		



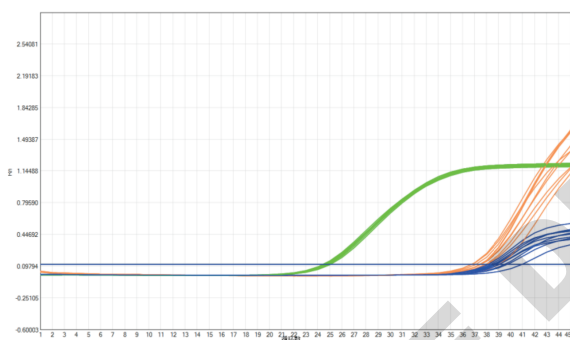
EXTRACTION KIT



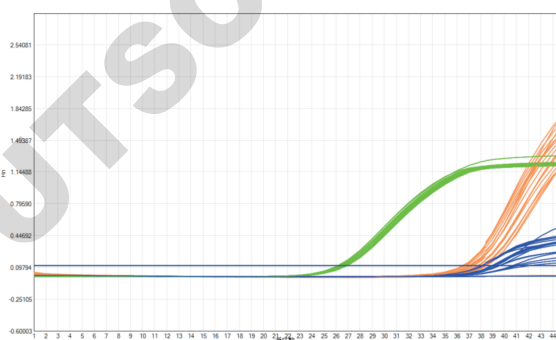
S10016E Nucleic Acid Extraction-Purification Kit

- ✓ **Superpara magnetic beads**
- ✓ **Patented washing technology**
- ✓ **Multiple sample extraction**
- ✓ **Automated extraction**

EXCELLENT PERFORMANCE



SARS-CoV-2 test, sample 300 µl Sensitivity: 30 copies/mL



SARS-CoV-2 test, sample 750 µl Sensitivity: 15 copies/mL

ORDER INFORMATION

No.	Product Name	Spec.
Natch 24	Nucleic Acid Extraction System	1 Set
Natch 48	Nucleic Acid Extraction System	1 Set
Natch 96	Nucleic Acid Extraction System	1 Set
S10016E	Nucleic Acid Extraction-Purification Kit	24T, 48T, 96T/Kit

